

**NOTES TO CONTRACTOR**

**IMPLEMENTATION OF THE WORKS:**  
All soft landscape works must be carried out by an approved Landscape Sub-Contractor who is a member of the British Association of Landscape Industries (BALI) and a registered member of Constructionline. Landscape works are to be carried out in the first planting season after commencement of the development. Generally, all earthworks shall be executed in accordance with BS4428 'General Landscape Operations'.

**PROTECTION OF EXISTING TREES AND HEDGEROW VEGETATION:**  
Existing trees and hedgerow vegetation that is to be retained is to be carefully protected as per BS 5837:2012 'Trees in relation to design, demolition and construction' throughout the duration of the works.

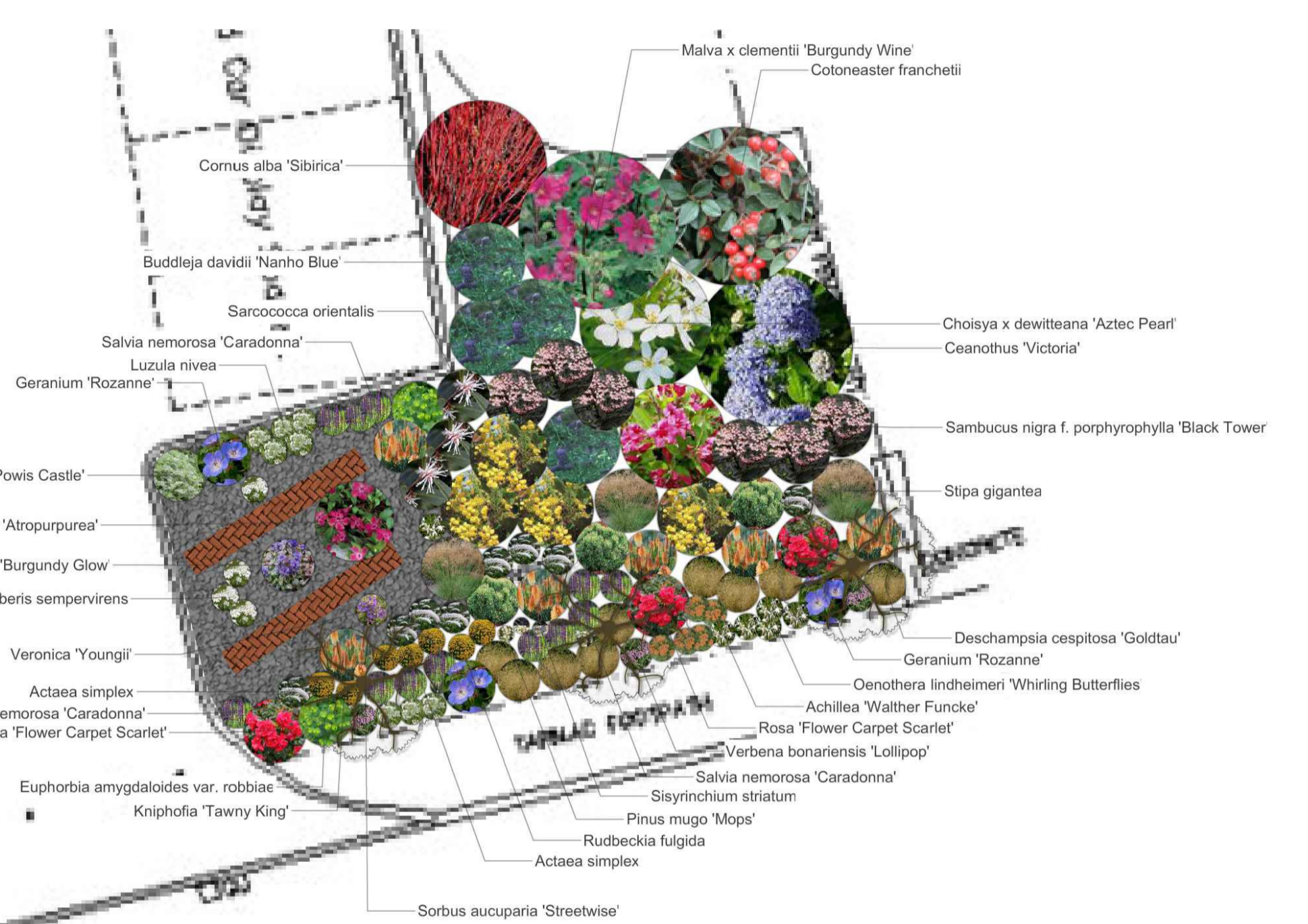
**PREPARATION AND PLANTING:**  
All areas to be planted are to receive a minimum depth of 400mm good vegetable screened topsoil imported to the site. Topsoil surface to be cultivated to a depth of 150mm to relieve compaction prior to planting, leaving an even surface free from lumps and clods. Ground profiles are to be left with smoothly flowing contours, free from localised depressions, high spots and abrupt angles.

**PLANTING:**  
Handling and transportation of all plants shall be carried out in accordance with Horticultural Trade Associations 'Plant Handling' recommendation (1987). All planting operations shall be carried out in accordance with BS 5326: 1975; BS 4043:1996, and BS 4428: 1989 'Landscape Operations'. Quality of all plant material will be compatible with BS 3936 part 1: 1992 specifications - 'Nursery Stock'.

It is the Contractors responsibility to ensure that all underground services have been located and identified in advance of free pit excavation. No tree species, location or specification will be amended without prior approval from the project Landscape Architect and/or Client. All shrubs will be supplied in accordance with the plant schedule by named nurseries. Sides and bottom of pits shall be loosened to relieve any compaction. All shrubs to be planted in accordance with horticultural best practice guidelines. No shrub species, size or location should be altered without prior approval from the Landscape Architect and/or the Client.

All amenity planted areas to have a 75mm settled depth layer of bark mulch applied after planting.

**MANAGEMENT:**  
The Contractor will be responsible for all maintenance operations during the maintenance period (12 months) which will run concurrently with the Defects Liability Period. The following maintenance operations are to take place at visits during establishment maintenance: Litter removal; weeding; watering; fertilising; wind firming. Prior to end of Defects Liability Period any defective plants are to be replaced at the Contractors expense (except those maliciously damaged or removed from site).



SPECIES	QUANTITY	SPECIFICATION
Achillea 'Walther Funcke'	70	C.G; 3Lt
Actaea simplex	8	C.G; 3Lt
Ajuga reptans 'Burgundy Glow'	1	C.G; 3Lt
Artemisia absinthium	16	C.G; 3Lt
Artemisia 'Powis Castle'	14	C.G; 3Lt
Buddleja davidii 'Nanho Blue'	4	CG; 600-800; 3lt; branched; 4 breaks
Ceanothus 'Victoria'	1	CG; 80-100; 15lt; branched; 6 breaks
Chiosya x dewitteana 'Aztec Pearl'	1	CG; 400-600; 15lt; bushy; 6 breaks
Cornus alba 'Sibirica'	1	CG; 80-100; 15lt; branched; 4 breaks
Cotoneaster franchetii	1	CG; 100-120; 15lt; branched; 6 breaks
Deschampsia cespitosa 'Goldtau'	90	C.G; 3Lt
Euphorbia amygdaloides var. robbiae	31	C.G; 300-400; 3Lt; bushy; 10 breaks
Geranium 'Rozanne'	27	C.G; 3Lt
Iberis sempervirens	4	C.G; 3Lt
Kniphofia 'Tawny King'	32	C.G; 3Lt
Luzula nivea	73	C.G; 3Lt
Mahonia aquifolium 'Apollo'	6	CG; 300-400; 7lt; branched; 5 breaks
Malva x clementii 'Burgundy Wine'	1	CG; 400-600; 3lt
Oenothera lindheimeri 'Whirling Butterflies'	54	C.G; 3Lt
Pinus mugo 'Mops'	11	CG; 200-300; 3lt; bushy
Rosa 'Flower Carpet Scarlet'	24	CG; 200-300; 3lt; bushy; 4 breaks
Rudbeckia fulgida	98	C.G; 3Lt
Salvia nemorosa 'Caradonna'	98	C.G; 3Lt
Sambucus nigra f. porphyrophylla 'Black Tower'	6	CG; 400-600; 3lt
Sarcococca orientalis	3	CG; 300-400; 3lt
Sisyrrinchium striatum	93	C.G; 3Lt
Stipa gigantea	10	C.G; 3Lt
Verbena bonariensis 'Lollipop'	56	C.G; 3Lt
Vinca minor 'Atropurpurea'	1	C.G; 3Lt; several shoots
Wigletia 'Bristol Ruby'	1	CG; 600-800; 15lt; branched; 7 breaks

\* All planted areas to have a 75mm deep layer of bark mulch applied after planting

**TREES**

Sorbus aucuparia 'Streetwise' 18  
Heavy Standard; Girth @ 1.0, 120-140mm; Height 3.5-4.0m; Single clear stem with lowest branch @ 2m; Double stake with a timber cross rail and 1no tree tie and spacer.

**PLANNING**

Drawing Title:  
**Trust Ford Huddersfield**

Drawing Title:  
**SOFT LANDSCAPE PROPOSALS**

Project Nr:  
**80013**

Dwg Nr:  
**01**

Rev:  
**D Fletcher**

Scale:  
**NTS @ A1**

Date:  
**July 2025**

Drawn by:  
**D Fletcher**

T: 07765884346 E: greenspacec@gmail.com W: www.greenspacec.com  
A: 30 Laurel Drive, Laurelsale, Tandrages BT62 2PP