



Front Elevation - Section Line A



South Elevation - Section Line B



Rear Elevation - Section Line C



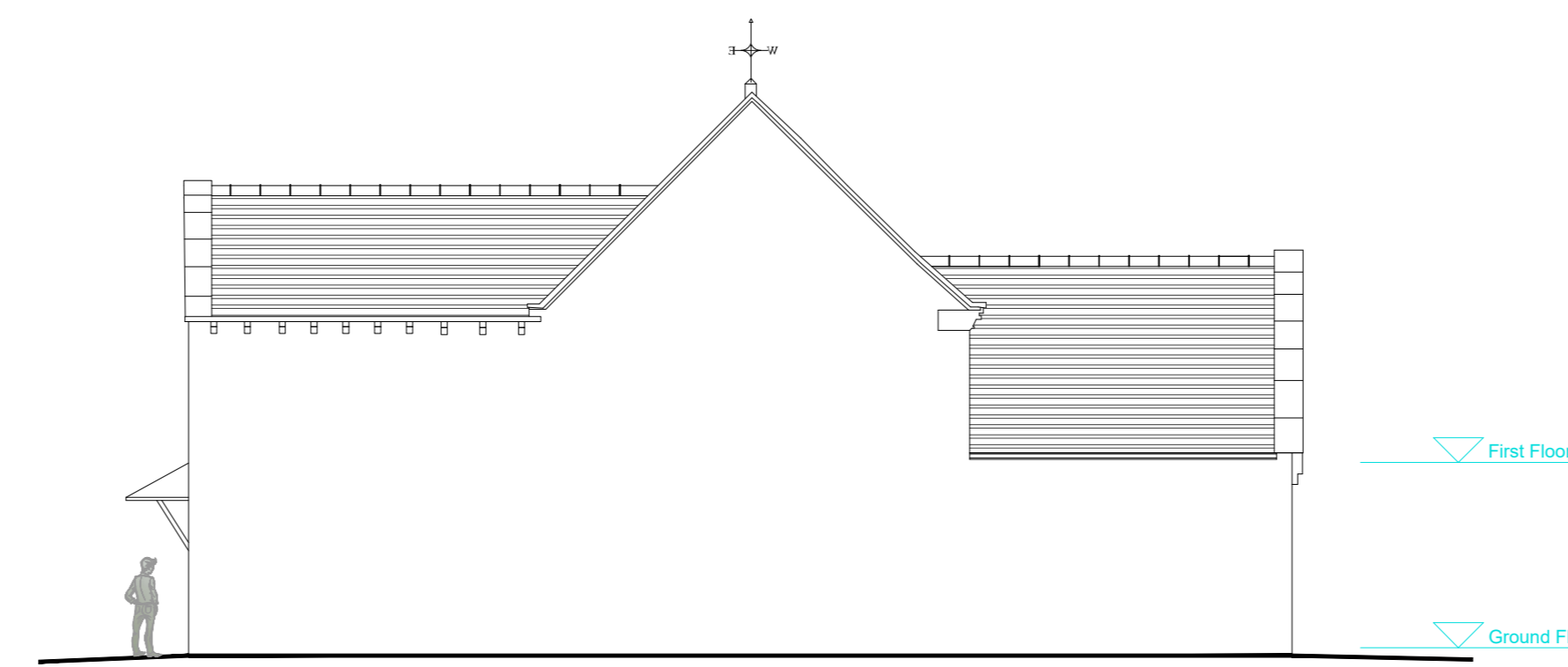
North Elevation - Section Line D



Coach House - South Elevation - Section Line E



Coach House - East Elevation - Section Line F



Coach House - North Elevation - Section Line G

The Conservation type sash windows we are intending to use have been specifically designed to combine modern performance with the authentic visual style of traditional timber sash windows. They also never need to be repainted, meaning that they will maintain their appearance for decades without intervention. Based on information from the manufacturer, these windows have been successfully used in hundreds of conservation areas throughout England, Scotland and Wales. In our view, externally these windows are indistinguishable from original timber sash windows, both from pavement distance and from adjacent to the windows. They operate in exactly the same way, and contain numerous authentic features that set them apart from standard uPVC windows, including the following:

**True sash windows** – they are constructed in the same way as traditional timber sash windows, with the sashes sliding up and down in dedicated channels; top sash outermost, bottom sash innermost.

**Mechanical joints** – all the joints on frame and sashes are joinery-style butt joints, not mitered and grooved welds.

**Deep bottom rail** – the windows feature a traditional 81mm deep bottom rail on the lower sash.

**Run-through sash horns** – the windows feature continuous run-through sash horns that form part of the sash, not bolt-on fake or mock sash horns.

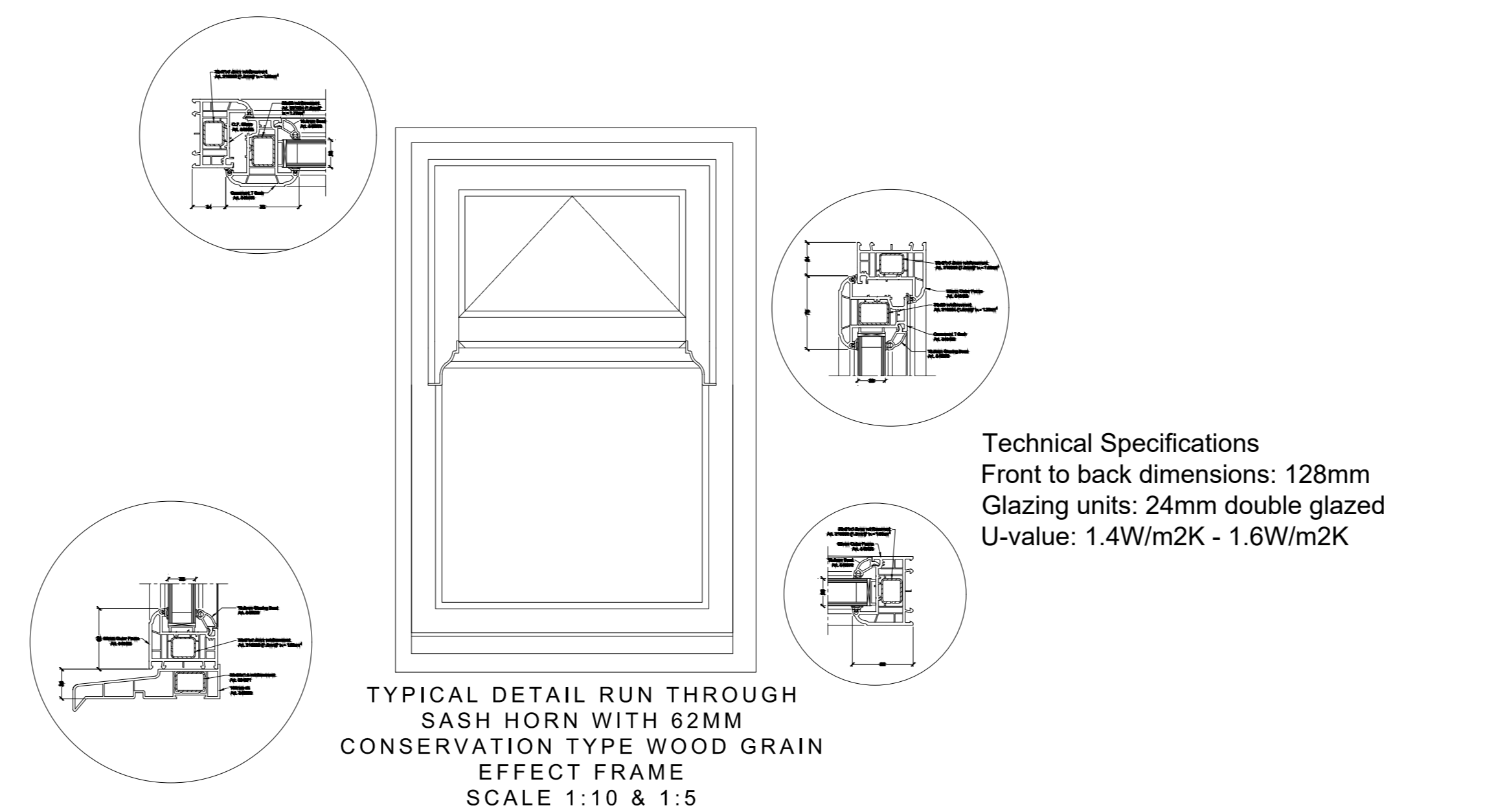
**Putty line glass lines** – the external sash sightlines where the sash meets the glass are traditional chamfers, replicating original putty lines. The same is true of the external astragal glazing bars.

**Slim midrail** – unlike standard uPVC windows Ultimate Rose features slim profiles throughout, including an ultra slim 35mm midrail (compared to the 60mm typically used on other windows). This matches original hardwood sashes, and it is slimmer even than many modern softwood timber windows.

**High quality woodgrain textured effect** – the window features a high-quality laminated finish that closely resembles timber, and which is designed to last for decades without fading or discolouring.

**Seamless construction** – unlike standard uPVC windows that are easily identifiable from the numerous caps, joints and profile shadow lines, Ultimate Rose is completely seamless, giving a smooth solid finish, just like timber.

**Window cills** – the windows come with a 50mm deep cill, just like the thick hardwood cills used on old sash windows (rather than the standard 25mm cill used on other window systems).

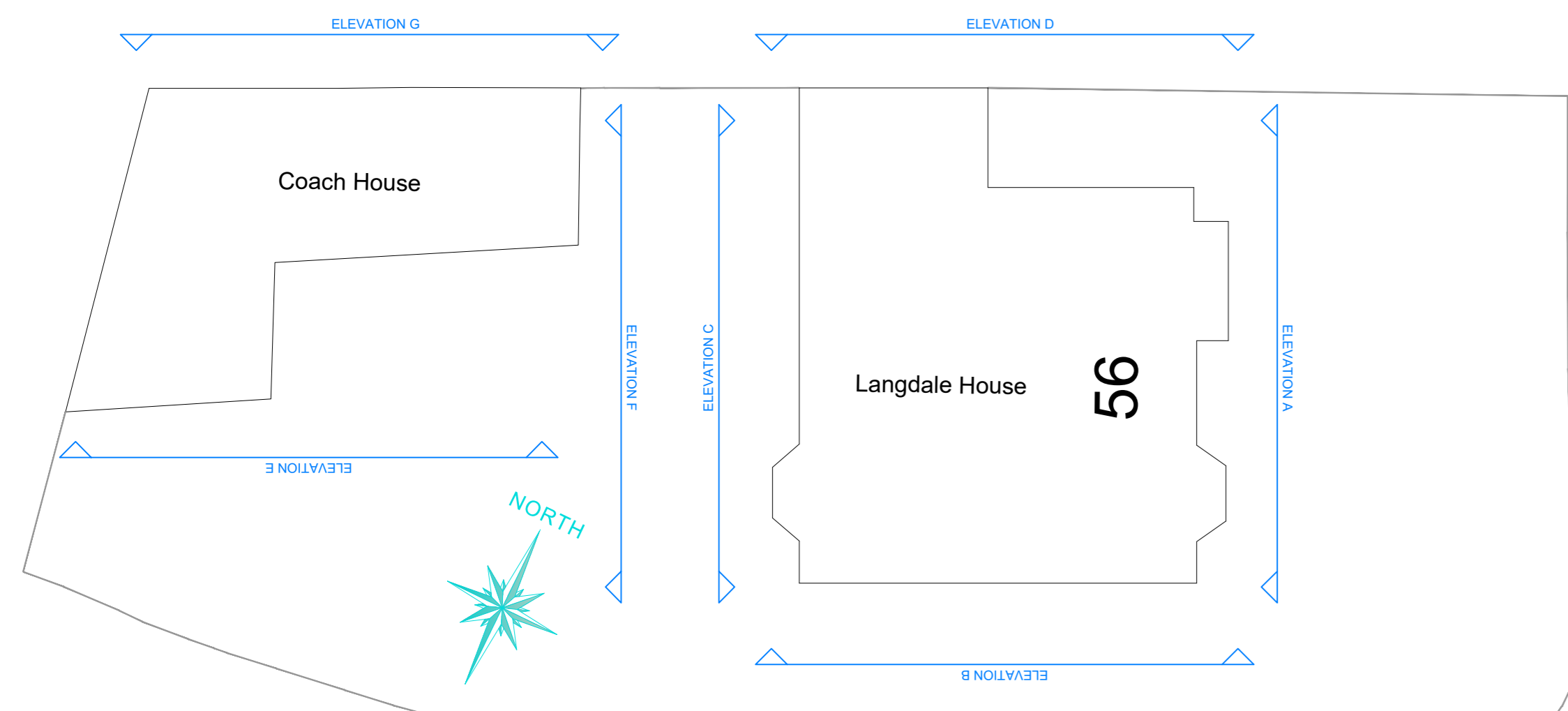


Technical Specifications  
Front to back dimensions: 128mm  
Glazing units: 24mm double glazed  
U-value: 1.4W/m2K - 1.6W/m2K

KEY	DESCRIPTION
[Hatched Box]	HATCHED INDICATES WINDOWS TO BE REPLACED
[Symbol]	RUN-THROUGH SASH HORNS
[Symbol]	WINDOWS TO BE INSTALLED IN ACCORDANCE TO EXISTING ARRANGEMENTS OF TIMBER.
[Symbol]	NOTE: THERE ARE SOME WINDOWS WHICH ARE NOT SASH WINDOWS THESE SHOULD BE REPLACED WITH LIKE FOR LIKE WINDOWS IN UPVC.
[Symbol]	STANDARD SPECIFICATION:
[Symbol]	75MM FRAME DEPTH
[Symbol]	A ENERGY PANELED
[Symbol]	DOUBLE OR TRIPLE GLAZED WINDOW TO CLIENTS REQUIREMENTS
[Symbol]	B CHAMBERED FOR ENHANCED THERMAL PERFORMANCE
[Symbol]	WIDE RANGE OF FOILS
[Symbol]	HIGH SECURITY MULTIPoint LOCKING
[Symbol]	MULTIPoint LOCKING TO CASEMENT OPENERS
[Symbol]	INTERNALLY SEALED
[Symbol]	CASEMENT SASH 17MM WIDE
[Symbol]	LEAD-FREE PVC/UPVC
[Symbol]	COLOUR TO BE AGREED WITH CONSERVATION PLANNING OFFICER



COMPONENT AND HARDWARE DETAILS FOR A TYPICAL RUN THROUGH SASH HORN CONSERVATION TYPE WOOD GRAIN EFFECT FRAME



SITE PLAN WITH SECTION LINES

**Slide & Tilt Facility**  
Both the top and bottom sashes can slide up and down for ventilation. An easy clean clean tilt facility allowing you to clean your windows from inside your home is available. Please note certain specifications do not allow for these features.

**Sash Horns**  
Enhance your window by choosing run-through sash horns. The run-through utilises mechanical joints rather than welded to allow the horn to be a continuous part of the sash giving the window a more authentic overall look.

**Mechanical Joints**  
The fully mechanical joints take authenticity to another level because the 45 degree PVCu welds on the frame and sash are replaced with 90 degree mechanical joints as found on traditional timber windows.

**Seamless Welds**  
This revolutionary process disguises the external 45-degree corner welds with a flush mitre providing a far superior aesthetic finish. Available on woodgrain windows only and a minimum window size of 475mm wide x 900mm high.

**Astragal Bars**  
Include a bar layout on your new sash windows for added character and design that looks as close to the original as possible. Astragal bars are fixed onto the surface of the glass and are accompanied by back to back spacer bars inside the double glazed unit.



CLIENT: CYGNET HEALTH CARE  
SHEET TITLE: PROPOSED ELEVATIONS  
PROJECT: LANGDALE HOUSE - 56 GLEDHOLT ROAD, HUDDERSFIELD HD1 4HR  
SCALE: 1:100 @ A0  
DRAWING NUMBER: 22561 / 02  
DRAWN BY: S ALAM DATE: APRIL 2025