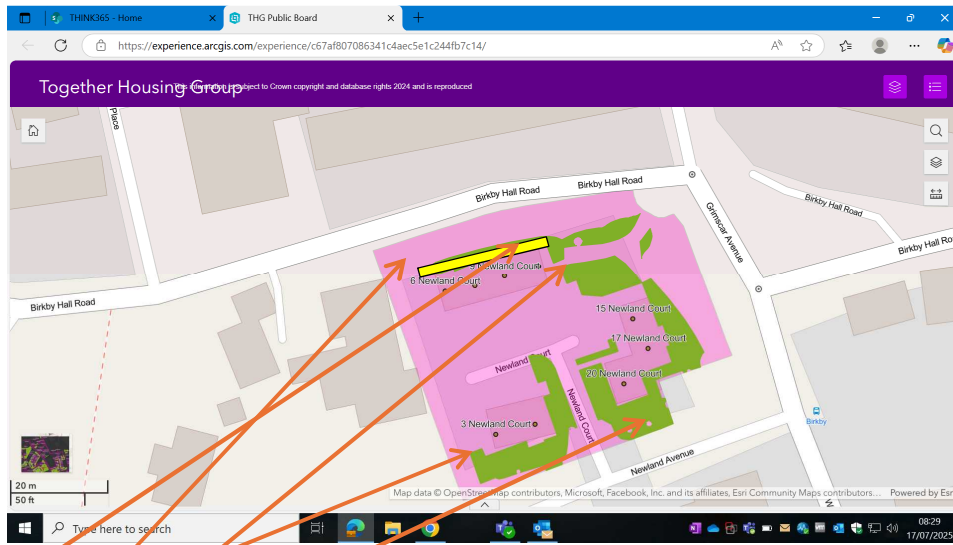


11Newland Court, Huddersfield, West Yorkshire, England, HD2 2UJ



T 1 T 2 T 3 T 4 T 5

- T 1 Numbers 6-11 completely overgrown with Laurel, fire risk and requires cutting back by 5m to give suitable clearance. Photo 1-2
- T 2 Shrubs/willow touching the roof of number 5 requires cutting back by 20m to give suitable. Photo 3.
- T 3 Dead tree to rear of number 6 requires removal. Photo 4
- T4 Large mature copper beech tag number 4964 requires crown raising to 5.2m, to clear the streetlight and draw back from roof area by 3m. photo 5-6
- T 5 Sycamore to the front entrance with tag number 4995 has a large dead section leaning out over the highway the deadwood requires removal. Photo 7



photo 1



photo 2

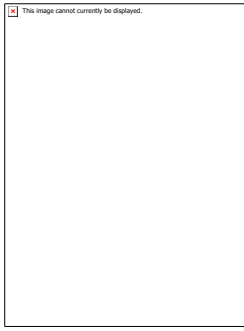


photo 3

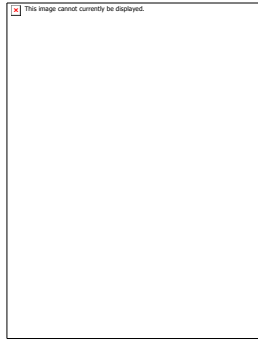


photo 4

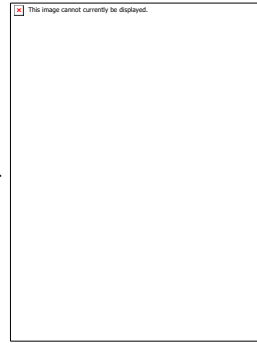


photo 5

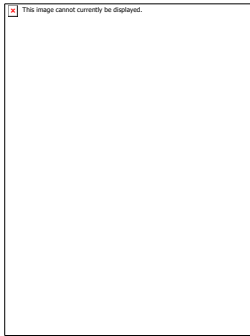


photo 6



photo 7