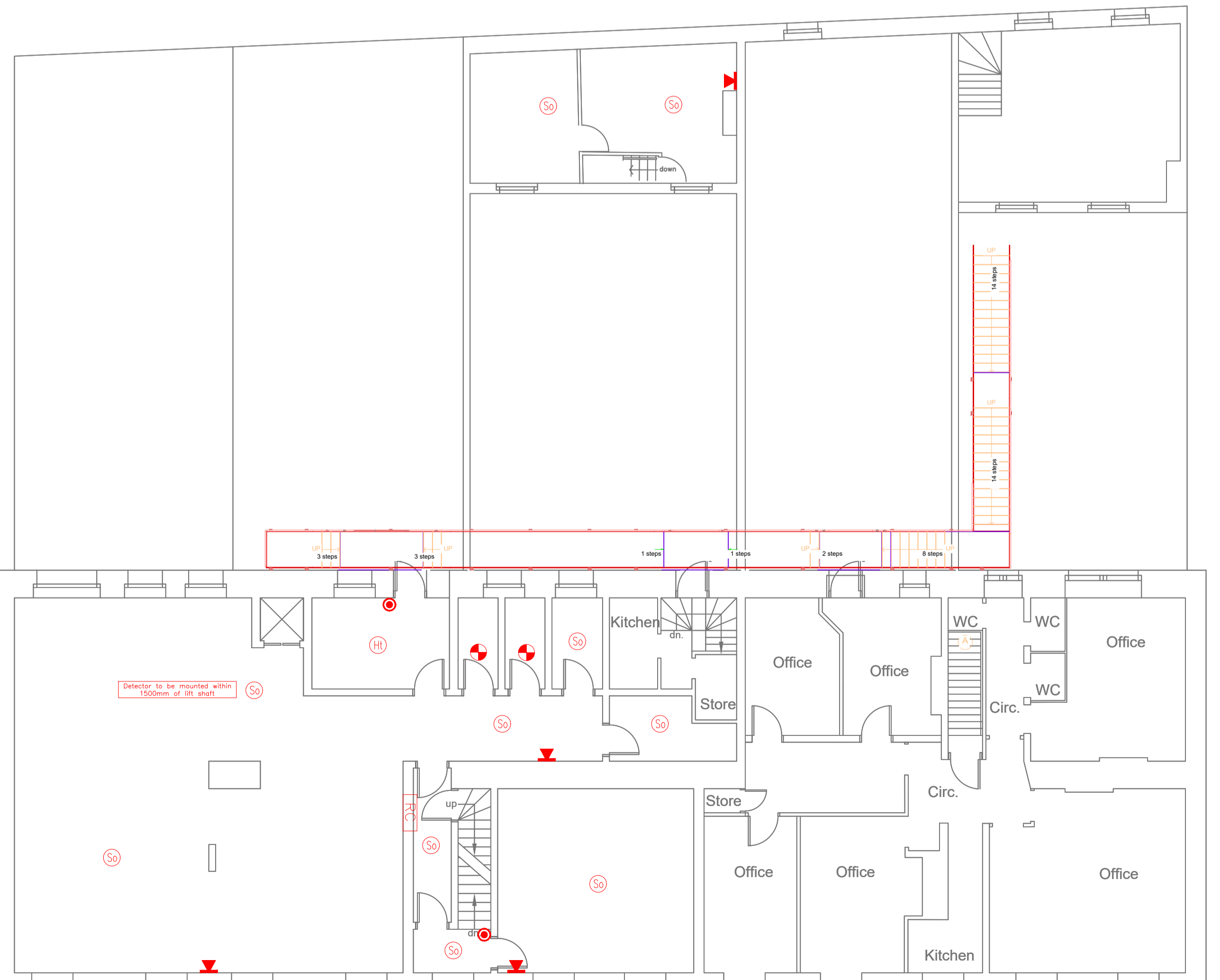
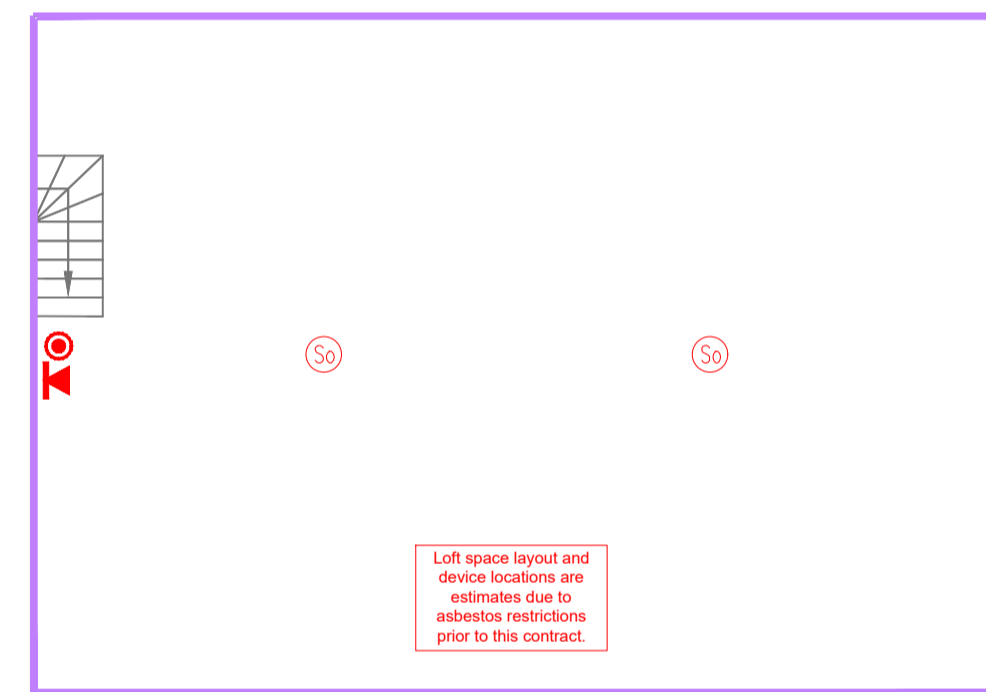


First Floor



Second Floor



Loft Space

SYMBOLS LEGEND

- Advanced Addressable Fire alarm control panel
- Fire alarm control panel
- Manual breakglass call point c/w hinged cover
- Optical smoke detector
- Heat detector
- Electronic sounder
- Xenon beacon
- 'Hold-open' wall magnet
- 'Hold-open' door closer
- 'Multi-sensor'
- 24v Fire Alarm Relay card
- Fire Alarm Interface
- No Access due to asbestos

SMALL POWER

- MCCB panel board
- TP&N distribution board
- SP&N distribution board
- TP&N rotary isolator (rated as indicated)
- SP&N rotary isolator (rated as indicated)
- 13A unswitched single socket outlet
- 13A unswitched twin socket outlet
- 13A switched single socket outlet
- 13A switched twin socket outlet
- 13A ceiling-mounted socket outlet
- 13A unswitched fused connection unit
- 13A Key switched fused connection unit

- Red key operated fused isolator to be installed adjacent new fire alarm panel stating "FIRE ALARM, DO NOT SWITCH OFF"
- A New supply shall be installed to each fire alarm panel in 2.5mm FP200 fire rated cable and protected by 16A Type B MCB.
- All "End of line" devices shall clearly be labelled with a printed label stating "EOL"

Rev	Description	Date	Drn / Chk
Document Control			
		PO Box 1720 Huddersfield HD1 3EL T: 01484 221000 www.kirklees.gov.uk	
Growth & Regeneration - Development			
Client			
Growth & Regeneration Development			
Project			
New Street Buildings Fire Alarm			
Sheet Title			
10-12 First, Second Floor and Loft Fire Alarm			
Drawn	J.S	February 2023	Checked
Project Number	CLA420262B	Issue Status	
Drawing Number	Elec-08	Revision	Scale
		1:100	A1

red by Natalie Laybourn on 30/07/2025 at 1:1 plot scale