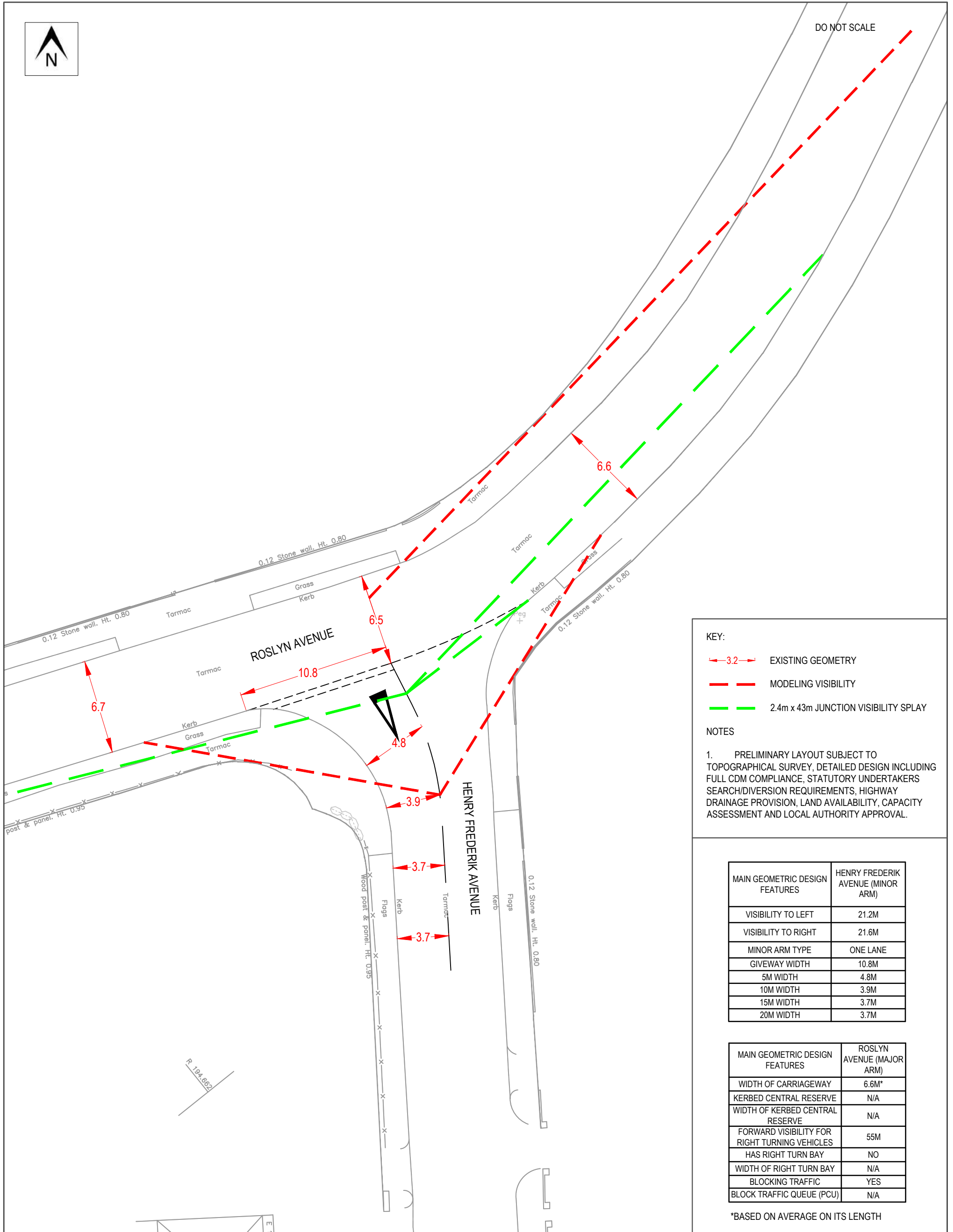




DO NOT SCALE



KEY:

- - - 3.2 EXISTING GEOMETRY
- — — MODELING VISIBILITY
- - - 2.4m x 43m JUNCTION VISIBILITY SPLAY

NOTES

1. PRELIMINARY LAYOUT SUBJECT TO TOPOGRAPHICAL SURVEY, DETAILED DESIGN INCLUDING FULL CDM COMPLIANCE, STATUTORY UNDERTAKERS SEARCH/DIVERSION REQUIREMENTS, HIGHWAY DRAINAGE PROVISION, LAND AVAILABILITY, CAPACITY ASSESSMENT AND LOCAL AUTHORITY APPROVAL.

MAIN GEOMETRIC DESIGN FEATURES	HENRY FREDERIK AVENUE (MINOR ARM)
VISIBILITY TO LEFT	21.2M
VISIBILITY TO RIGHT	21.6M
MINOR ARM TYPE	ONE LANE
GIVEWAY WIDTH	10.8M
5M WIDTH	4.8M
10M WIDTH	3.9M
15M WIDTH	3.7M
20M WIDTH	3.7M

MAIN GEOMETRIC DESIGN FEATURES	ROSLYN AVENUE (MAJOR ARM)
WIDTH OF CARRIAGEWAY	6.6M*
KERBED CENTRAL RESERVE	N/A
WIDTH OF KERBED CENTRAL RESERVE	N/A
FORWARD VISIBILITY FOR RIGHT TURNING VEHICLES	55M
HAS RIGHT TURN BAY	NO
WIDTH OF RIGHT TURN BAY	N/A
BLOCKING TRAFFIC	YES
BLOCK TRAFFIC QUEUE (PCU)	N/A

*BASED ON AVERAGE ON ITS LENGTH

PROJECT						CLIENT					
NETHERTON, HUDDERSFIELD						KCS DEVELOPMENT LTD					
DRAWING TITLE						CHECKED		APPROVED		DRG No.	
EXISTING ROAD GEOMETRY ROSLYN AVENUE/ HENRY FREDERIK AVENUE						PMO		PMO		23046/IN/01	
STATUS						DRAWN BY:		SCALE @ A3		DATE	
PRELIMINARY						RP		1:250		OCTOBER 2023	
REV			DATE			BY			APP		
-			24/10/2023			RP			PMO		
DESCRIPTION			INITIAL ISSUE			PMO			PMO		
PRELIMINARY			INITIAL ISSUE			PMO			PMO		