

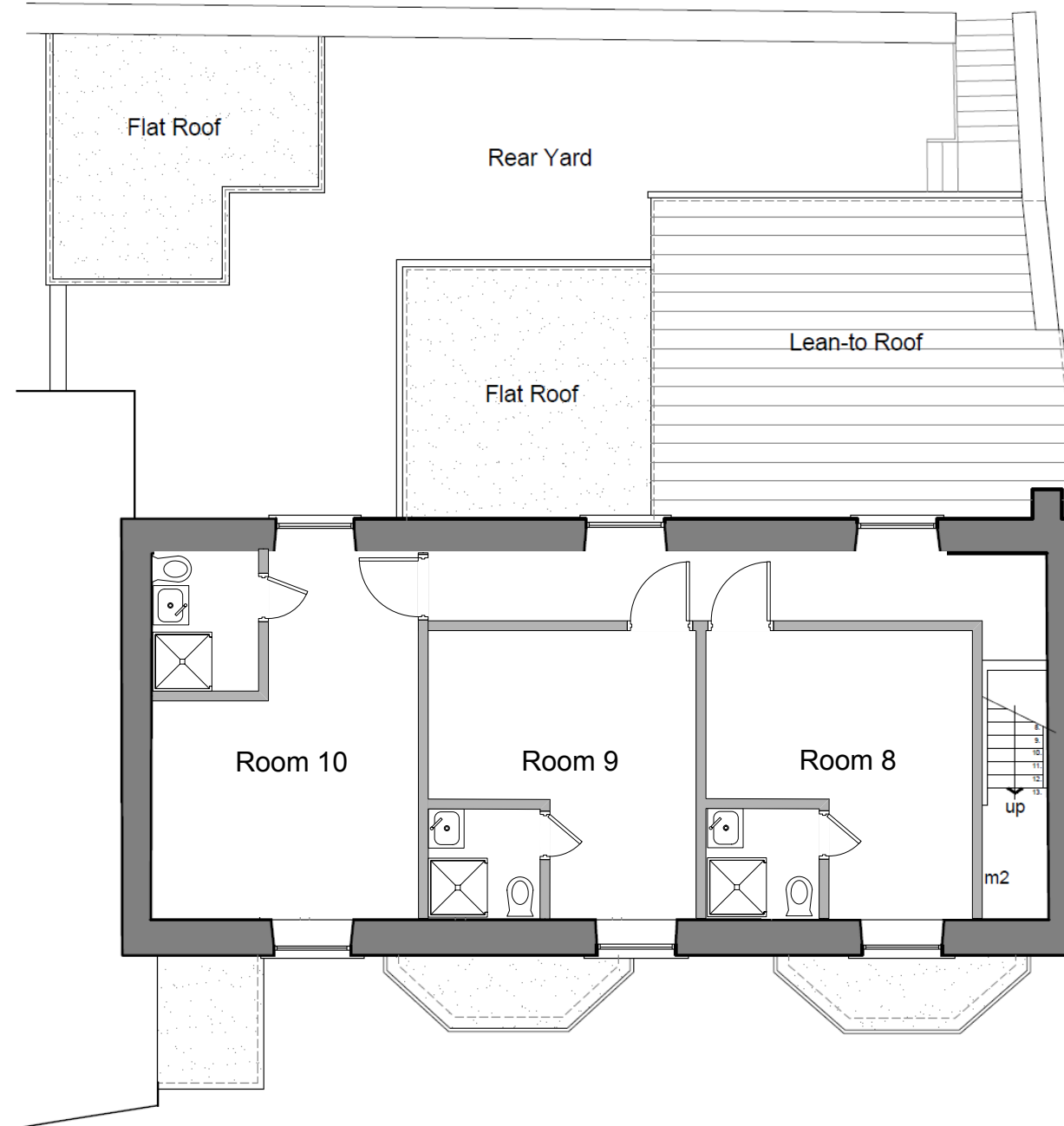
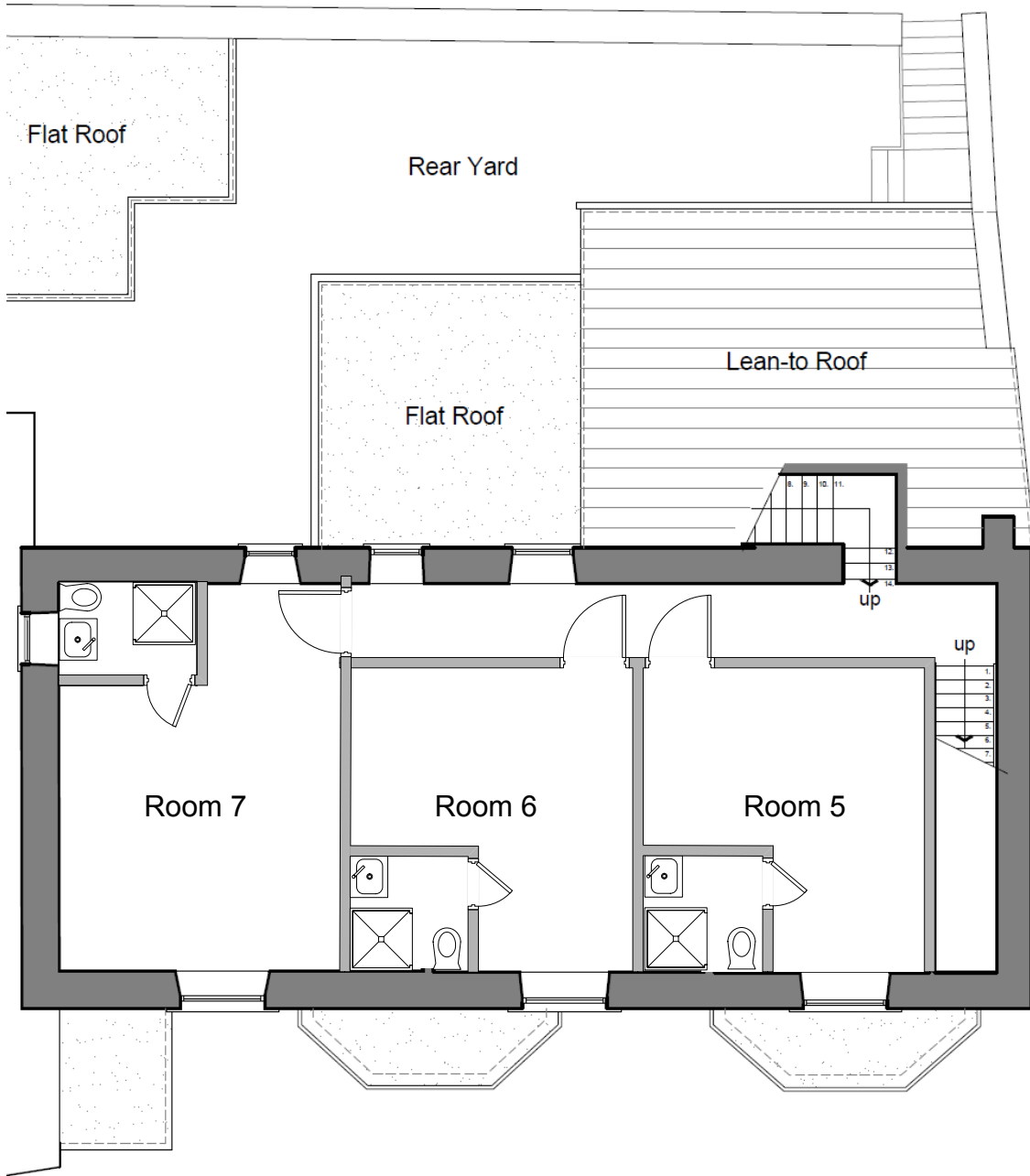
**OFFICE:**  
DPA Planning Ltd  
4100 Park Approach  
Leeds  
LS15 8GB

**SITE:**  
143 Upper  
Commercial St  
Batley  
WF17 5DH

Tel: 0113 3970 310  
Mob: 07799 095 613

S.dewar@dpaplanning.co.uk

**Notes**



| Date     | By | Paper | Scale | Dwg no. | rev |
|----------|----|-------|-------|---------|-----|
| 15/08/25 | SD | A3    | 1:100 | UCS008  | A   |

Proposed First and Second Floor