

**Advice : HSL-260514155849-243 DO NOT ADVISE AGAINST**

**Your Ref:** 2025/91531

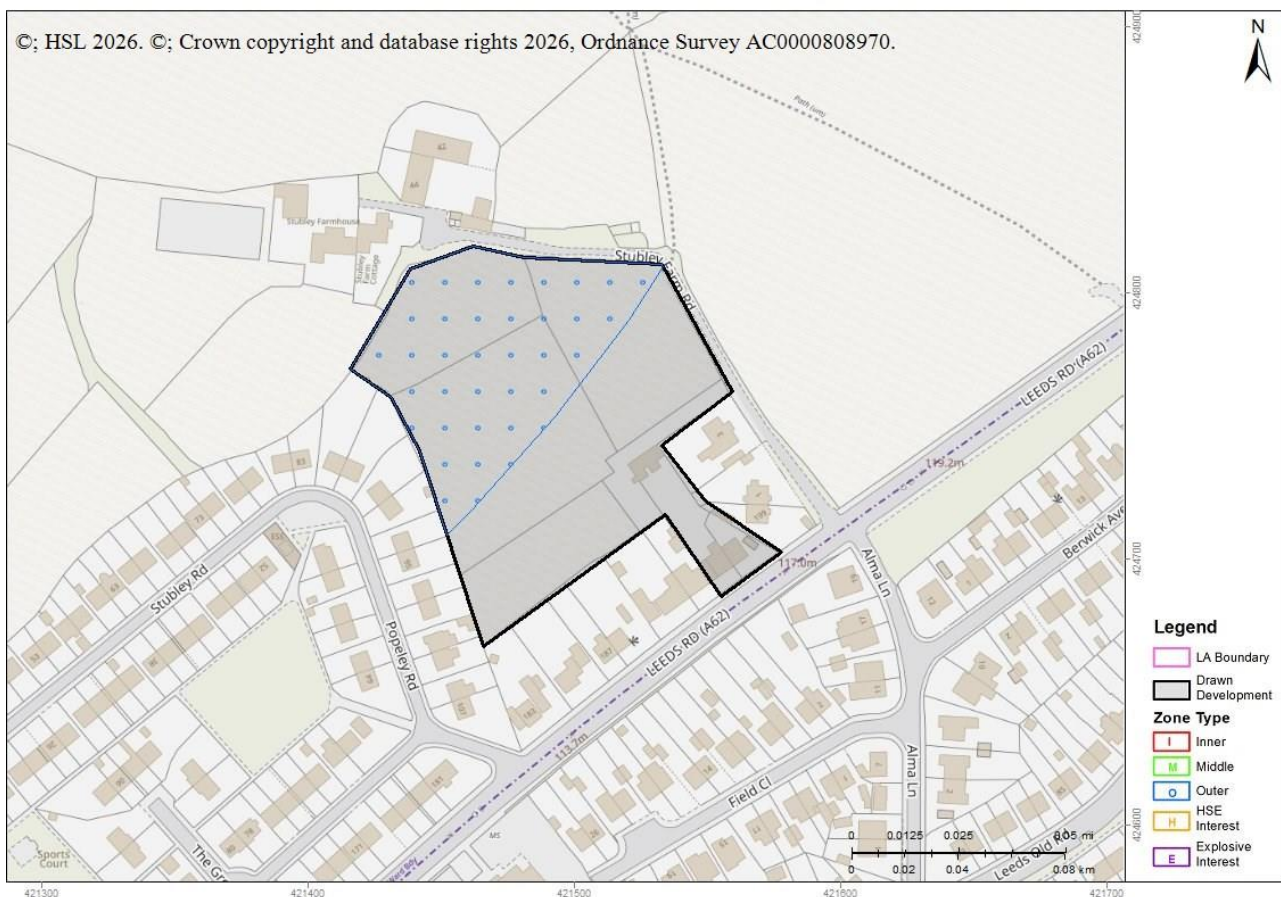
**Development Name:** land off, Leeds Road, Heckmondwike, WF16 9DB

**Comments:** Demolition of existing semi-detached houses and associated buildings, and construction of 49 dwellings, including associated access and other associated works

Land Use Planning Consultation with Health and Safety Executive [Town and Country Planning (Development Management Procedure) (England) Order 2015, Town and Country Planning (Development Management Procedure) (Wales) Order 2012, or Town and Country Planning (Development Management Procedure) (Scotland) Regulations 2013]

The Health and Safety Executive (HSE) is a statutory consultee for certain developments within the Consultation Distance of Major Hazard Sites/ pipelines. This consultation, which is for such a development and is within at least one Consultation Distance, has been considered using HSE's planning advice web app, based on the details input on behalf of Kirklees District (B).

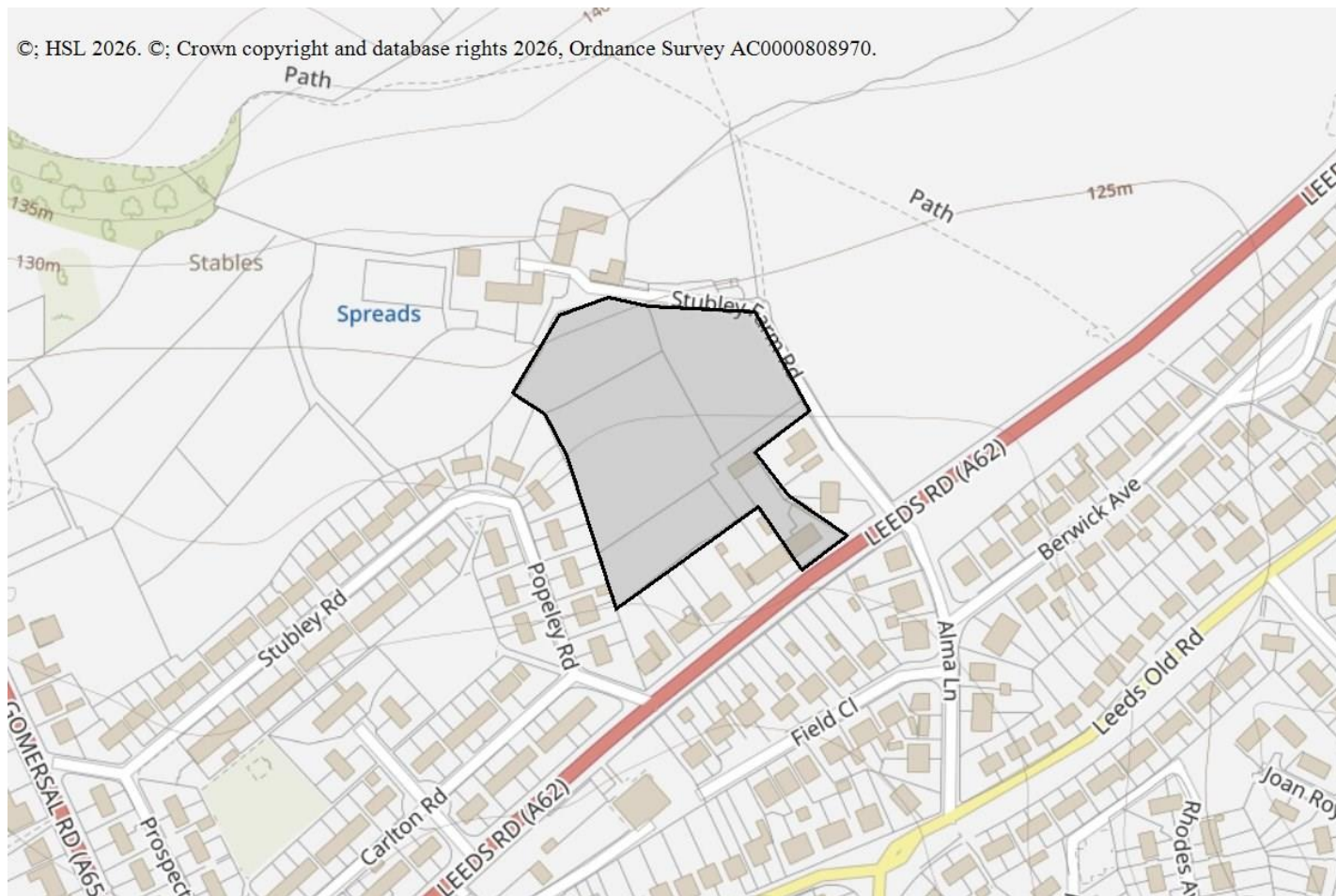
**HSE's Advice: Do Not Advise Against, consequently, HSE does not advise, on safety grounds, against the granting of planning permission in this case.**



**Breakdown:**

Housing : Do Not Advise Against

How many dwelling units are there (that lie partly or wholly within a consultation distance)? More than 30



This advice report has been generated using information supplied by Farzana Tabasum at Kirklees District (B) on 14 May 2026.

Note that any changes in the information concerning this development would require it to be re-submitted.