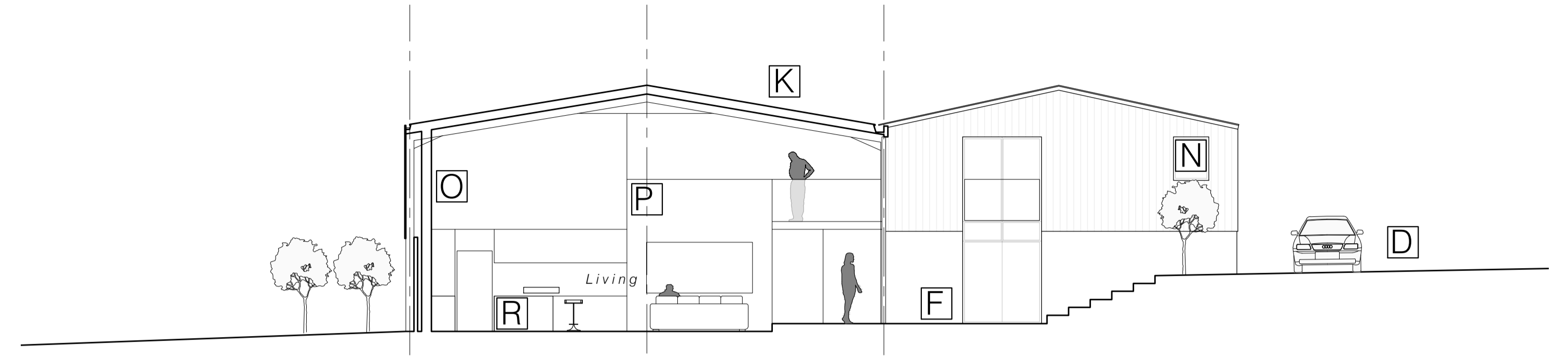
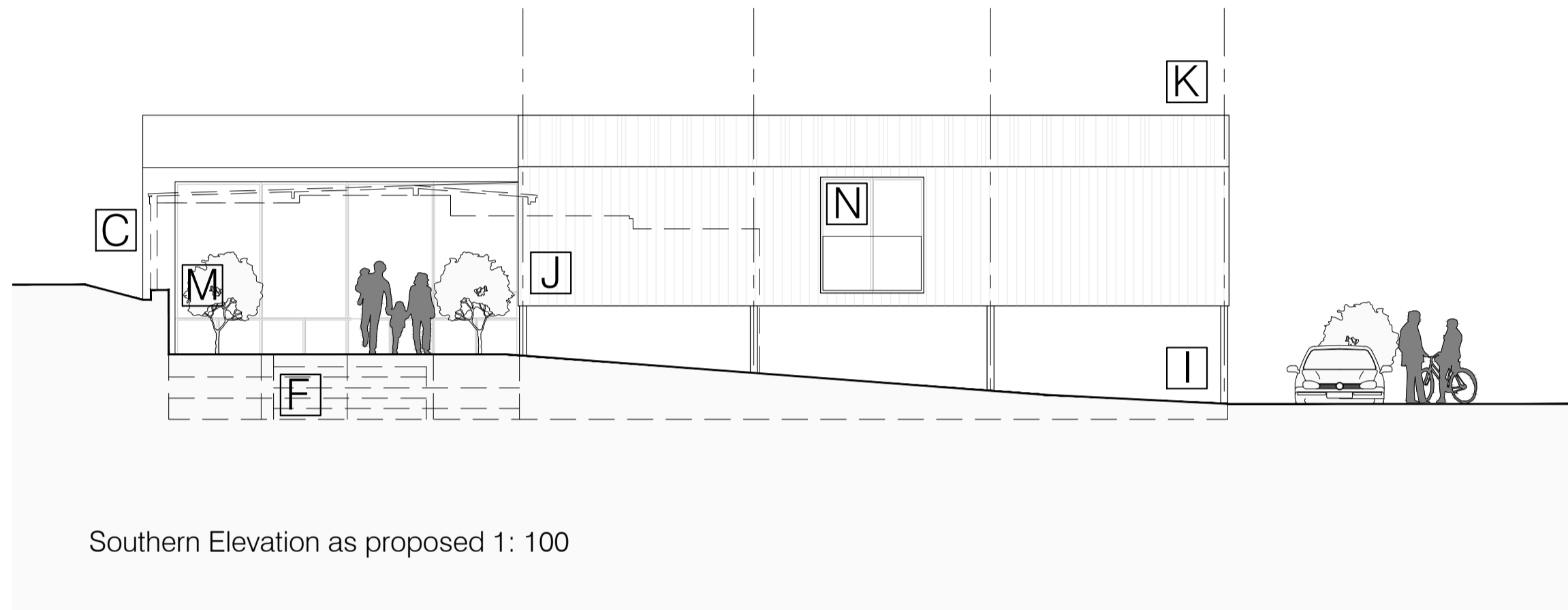


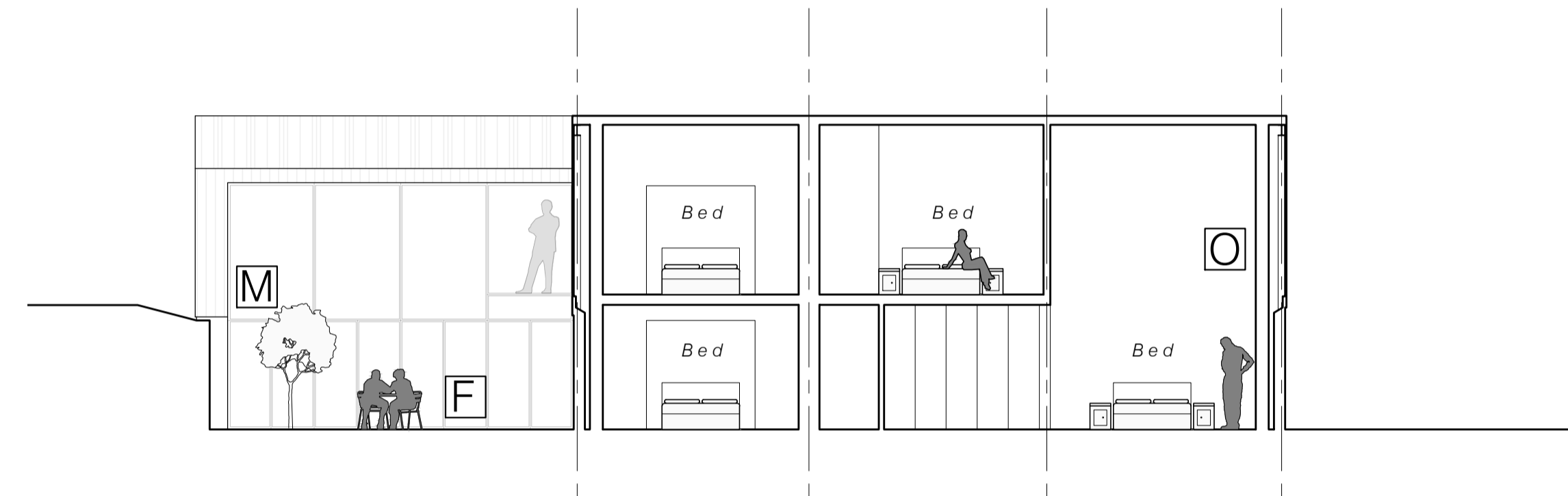
Western Elevation as proposed 1: 100



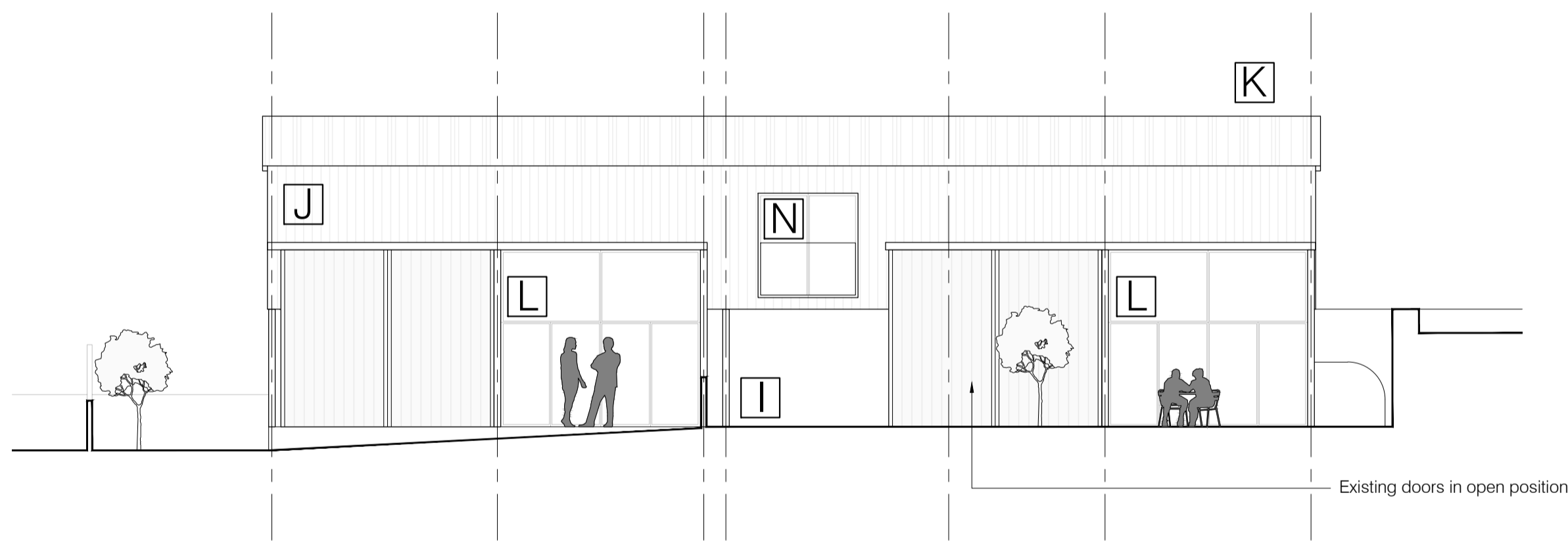
Western Elevation through entrance court as proposed 1: 100



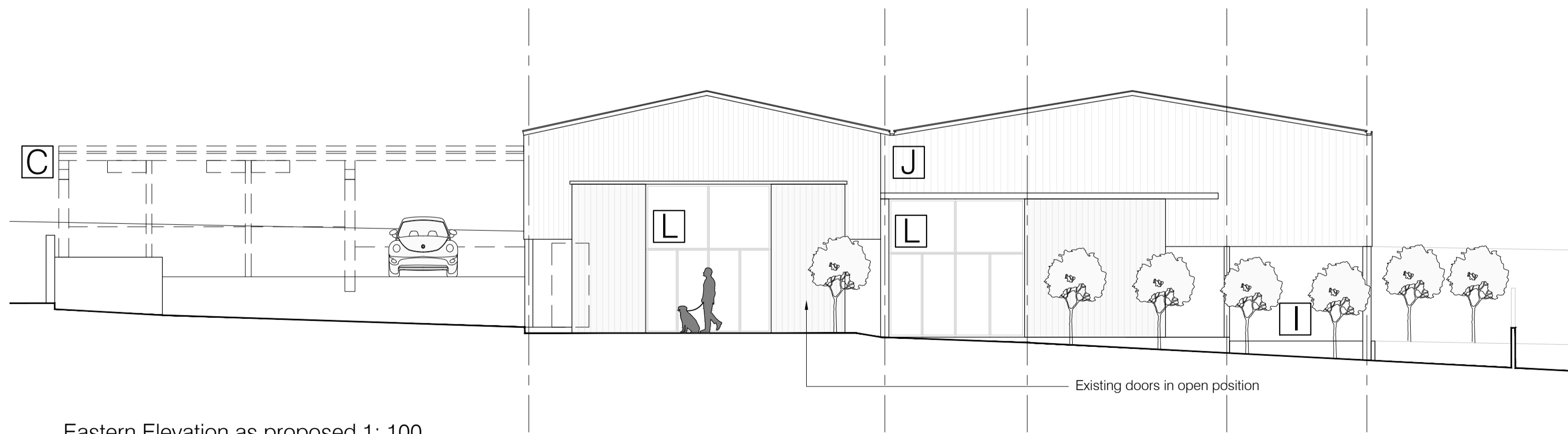
Southern Elevation as proposed 1: 100



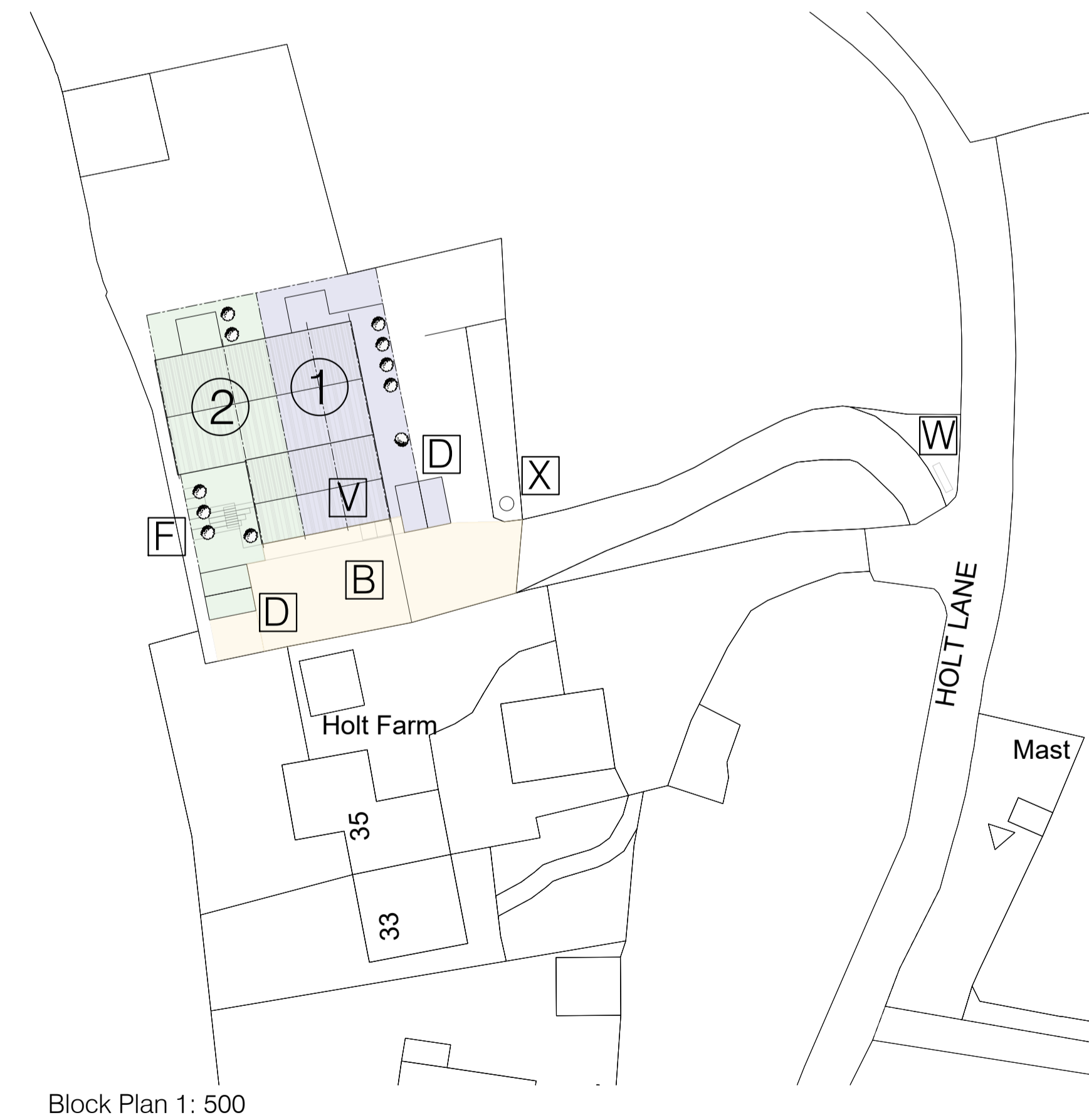
Southern Elevation through entrance court as proposed 1: 100



Northern Elevation as proposed 1: 100



Eastern Elevation as proposed 1: 100



Block Plan 1: 500

Areas:

Internal Floor Area (ground floor):	1_ 171.9sqm
	2_ 159.6sqm
Internal Floor Area (mezzanine floor):	1_ 43.6sqm
	2_ 89.6sqm
	464.7sqm
External Footprint:	1_ 195.2sqm
	2_ 188.1sqm
Curtilage:	1_ 159.7sqm
	2_ 158.5sqm

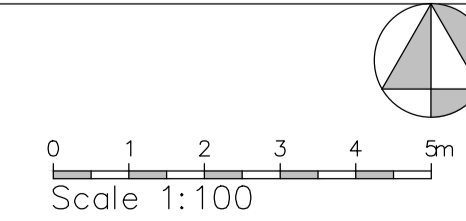
Notes:
 A_Existing private drive from Holt Lane with gated entry
 B_Existing Concrete yard retained as turning area
 C_Leanto steel/ timber shed structures to be taken down shown dotted
 D_Proposed surface parking defined with contrasting paving
 E_Existing perimeter walkway extended as necessary
 F_Landscaped entrance court with stepped approach from

parking area
 G_Post and rail timber fencing to boundary of domestic curtilage
 H_External landscaping including amenity lawn as specialist detail
 I_Existing masonry plinth, painted as specialist detail
 J_Existing hit and miss Yorkshire boarding infilled from behind to create rainscreen cladding

K_Existing fibre cement roofing made good as necessary, lined internally to living spaces
 L_Existing door openings infilled with glazed screens with opening elements at low level. External sliding doors retained as shown.
 M_New glazed infill with opening elements at low level
 N_New aluminium framed windows at mezzanine level in openings formed in timber cladding with frameless glass

balustrading
 O_Insulated internal lining leaf to external wall
 P_Full height feature wall supporting mezzanine reading space
 Q_Sunken seating area
 R_Island kitchen with wall mounted units all as specialist detail
 S_Draught Lobby
 T_En-suite bathroom with sanitary appliances linked to new

drainage system as specialist detail
 U_Feature timber stair linking levels
 V_Timber refuse store
 W_Refuse collection space
 X_Packaged treatment Plant - Klargester BioDisc BB - 12 person sewage treatment plant



Project	Proposed barn conversion at Holt Farm, Holt Lane, Holmfirth HD9 3BW
Client	Mr R Andrews, Busk Farm, Northfield Lane, Highburton
Dwg Title	(25404)4_Elevations as proposed
Scale	1: 100, 500 @ A1
Date	May 25