

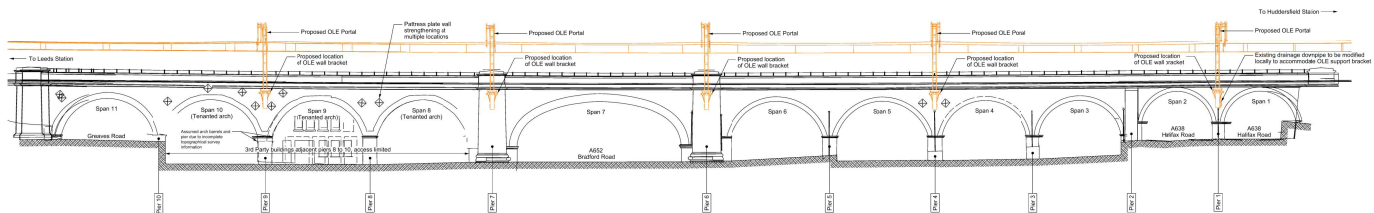
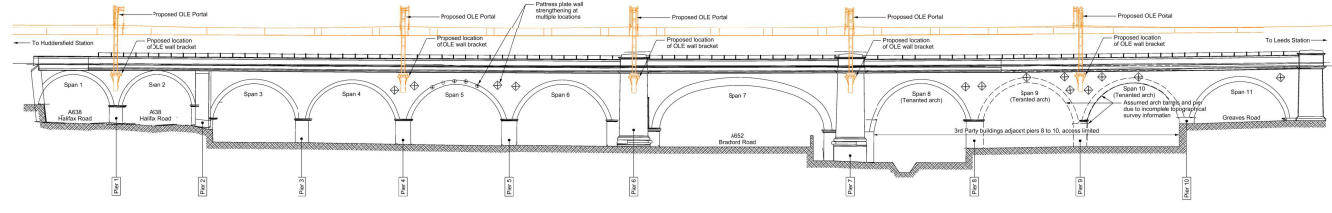
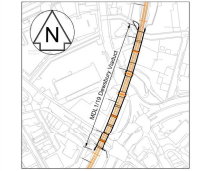
For Sections and Elevation, refer to Drawings 151667-TSA-40-MDL1-DRG-T-LP-160053, 151667-TSA-40-MDL1-DRG-T-LP-160054

**Safety, Health and Environmental Information**  
For Health and Safety information, refer to discipline specific Project Hazard Record

- Do not scale from this drawing.
- All dimensions are in millimetres unless shown otherwise.
- All levels are in metres above Ordnance Survey (AOD).
- This drawing is to be used in conjunction with Drawing 151667-TSA-40-MDL1-DRG-T-LP-160053 Proposed Section 8 Detail Sheet 1 of 1, 151667-TSA-40-MDL1-DRG-T-LP-160054 Proposed Section 8 Detail Sheet 2 of 1, 151667-TSA-40-MDL1-DRG-T-LP-160055 Proposed Section 8 Detail Sheet 3 of 1, 151667-TSA-40-MDL1-DRG-T-LP-160056 Proposed Section 8 Detail Sheet 4 of 1.
- Requirement for A&E cut sheets in the temporary condition during construction to be reviewed in accordance with the project schedule.
- OLE structure to be shown in black. OLE Pylons: 10m high steel. OLE Pylons: 10m high steel.

**Legend**

OS map data reproduced by permission of Ordnance Survey on behalf of HMSO. © Crown copyright. All rights reserved. Ordnance Survey licence number 0100016022.



NO	151667-TSA-40-MDL1-DRG-T-LP-160052	DRG	T-LP	0052
REV	1	01	160052	01
REV	2	01	160052	01



**TRU West Alliance**

Location: Huddersfield Law, Huddersfield, Yorkshire, Leeds  
 Title: CAD Drawing  
 Date: 01/10/2019  
 Project: Transpennine Route Upgrade

**Transpennine Route Upgrade**

Contract No: 151667  
 Client: West of Leeds  
 Listed Building Consent  
 MDL1/19 Dewsbury Viaduct  
 Proposed General Arrangement

Design	Ni Houss	Signal	Date
Drawn	Signal	Signal	Date
Checked	Signal	Signal	Date
Approved	Signal	Signal	Date
Checked	Signal	Signal	Date
As Shown	33.1606	10	0

Drawing Number: 151667-TSA-40-MDL1-DRG-T-LP-160052  
 Sheet of: P02.1

