

TOWN END ROAD

Planting Plans
Front, Rear & Side Gardens

Designer: Pandora Ryan
For: One17

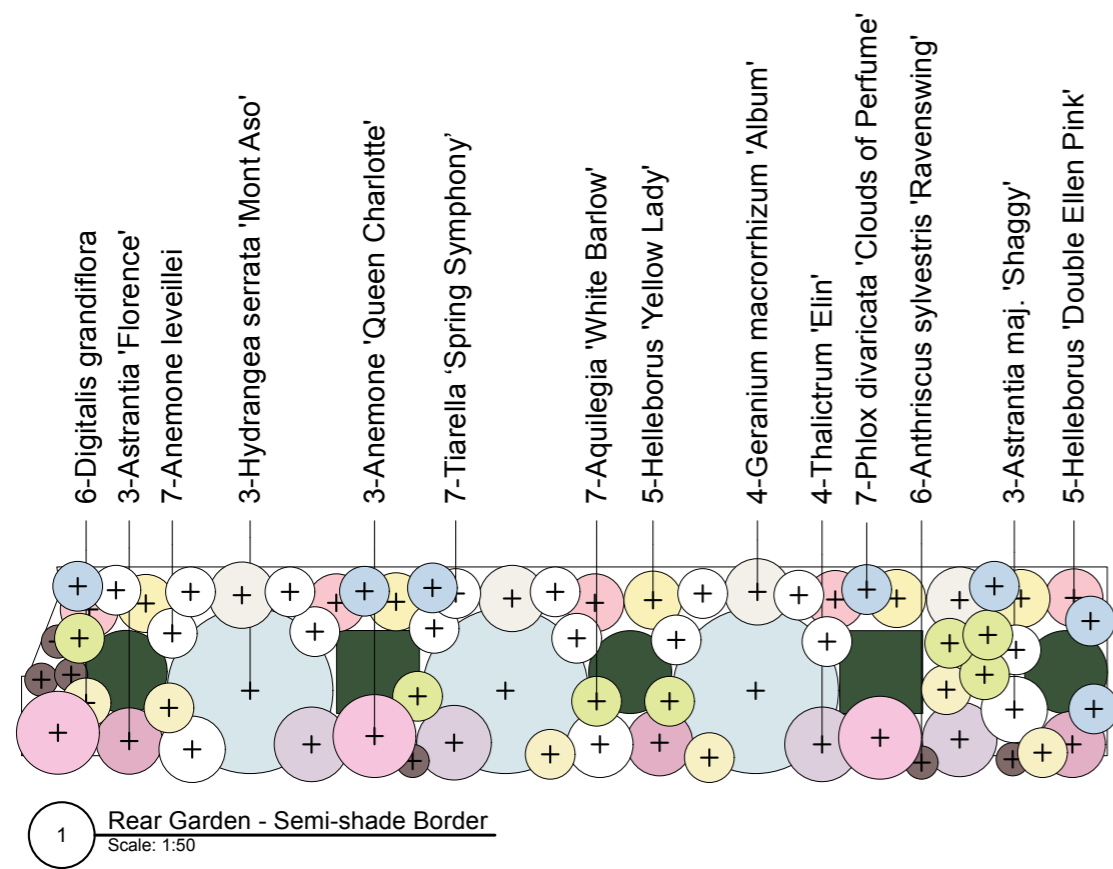
Planting Plans 01

Date 15 04 25

(c) Pandora Ryan Ltd.

PLANTING PLANS - REAR GARDEN

Semi-shade Border



Digitalis grandiflora



Astrantia 'Florence'



Taxus baccata topiary



Anemone leveillei



Hydrangea 'Mont Aso'



Anemone 'Queen Charlotte'



Tiarella 'Spring Symphony'



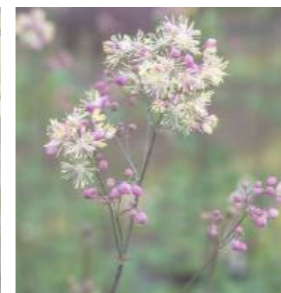
Aquilegia 'White Barlow'



Geranium 'Album'



Helleborus 'Yellow Lady'



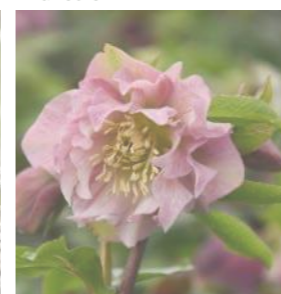
Thalictrum 'Elin'



Astrantia major 'Shaggy'



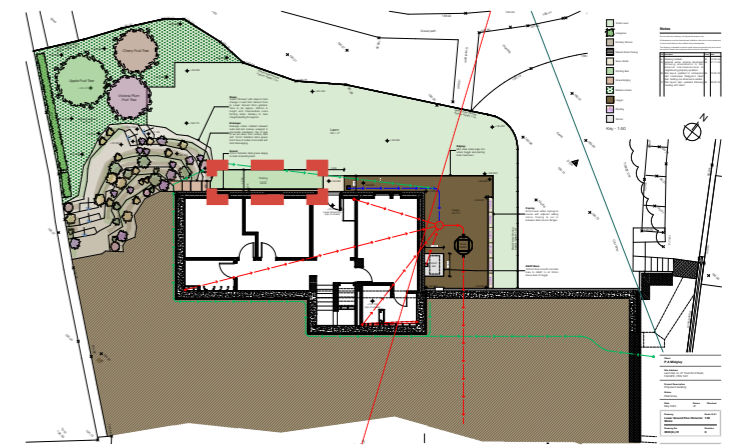
Anthriscus 'Ravenswing'



Helleborus 'Ellen Pink'

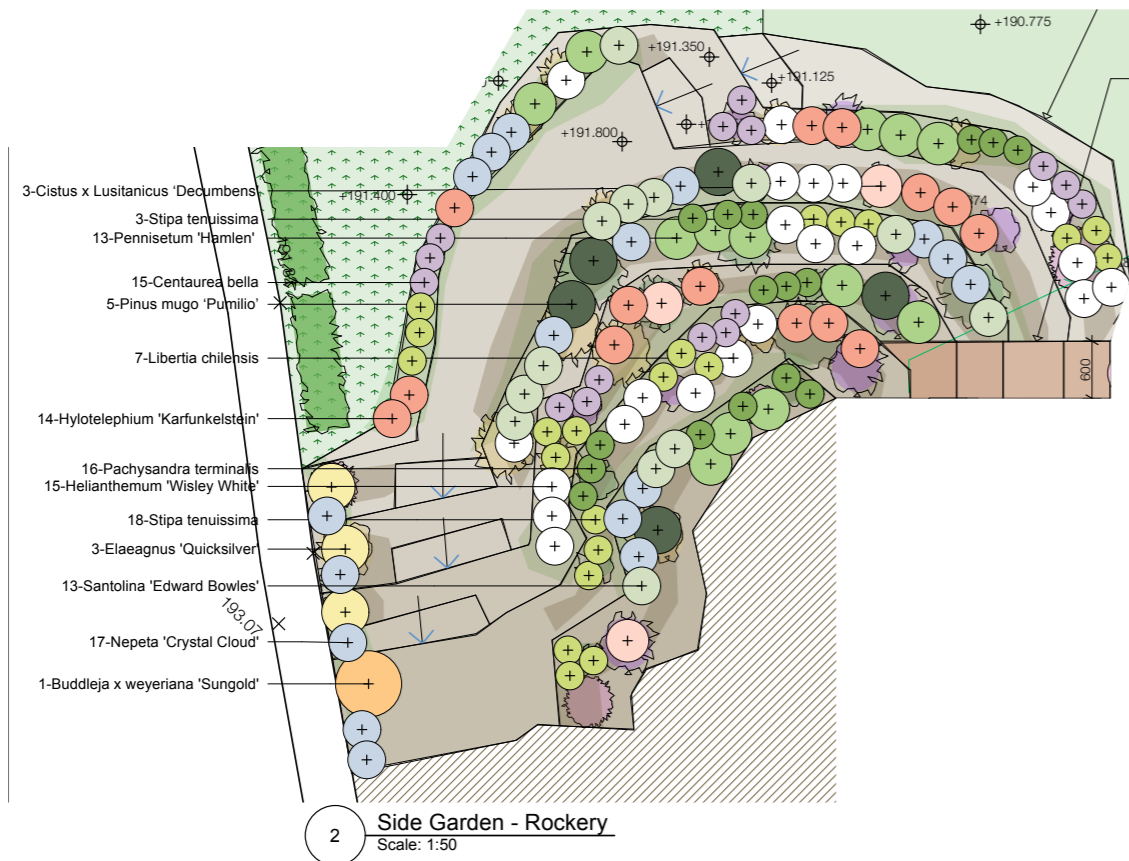


Phlox 'Clouds of Perfume'



PLANTING PLANS - SIDE GARDEN

Rockery



Cistus 'Decumbens'



Stipa tenuissima



Centaurea bella



Pennisetum 'Hamlen'



Pinus mugo 'Pumilio'



Libertia chilensis



Hylotelephium



Pachysandra terminalis



Helianthemum 'Wisley'



Elaeagnus 'Quicksilver'



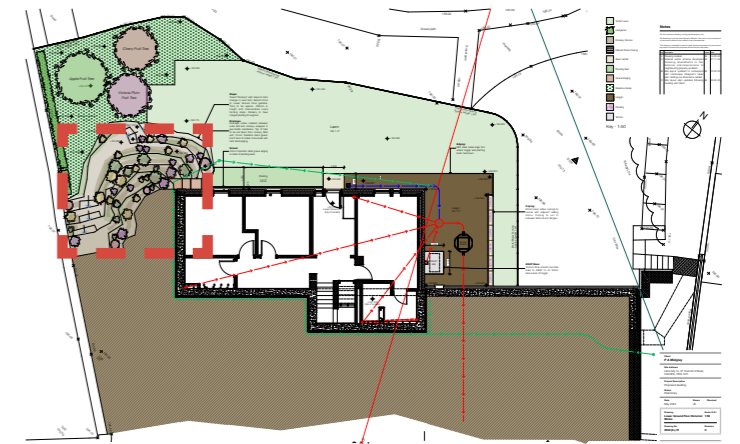
Nepeta 'Crystal Cloud'



Santolina 'Edward Bowles'

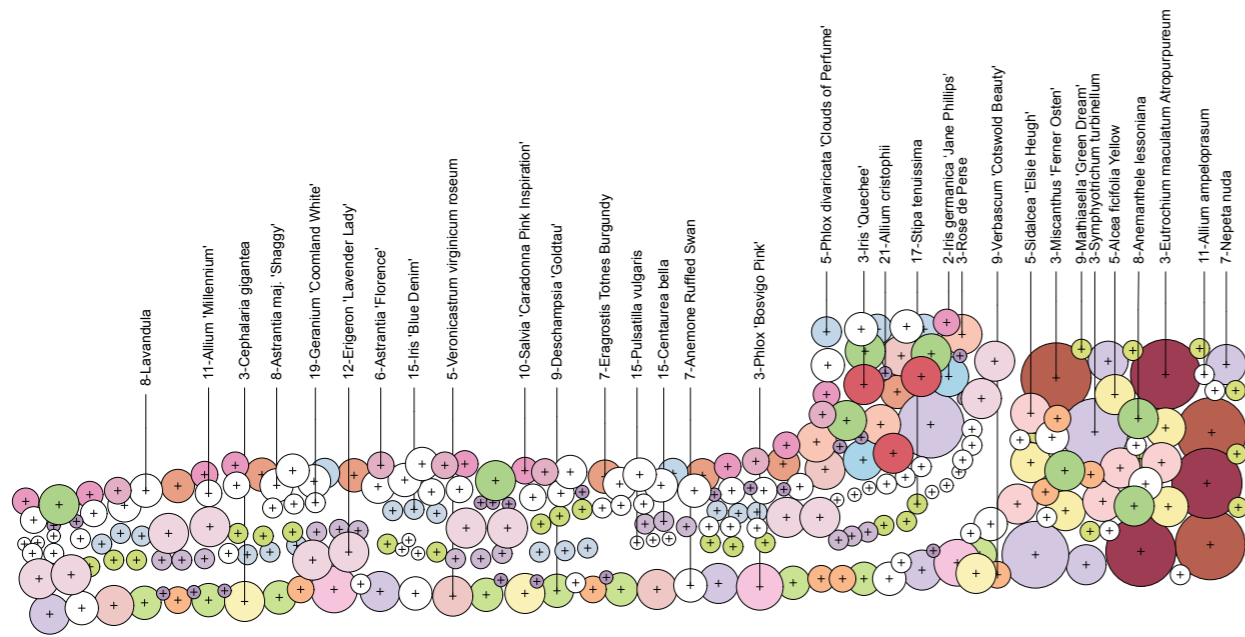
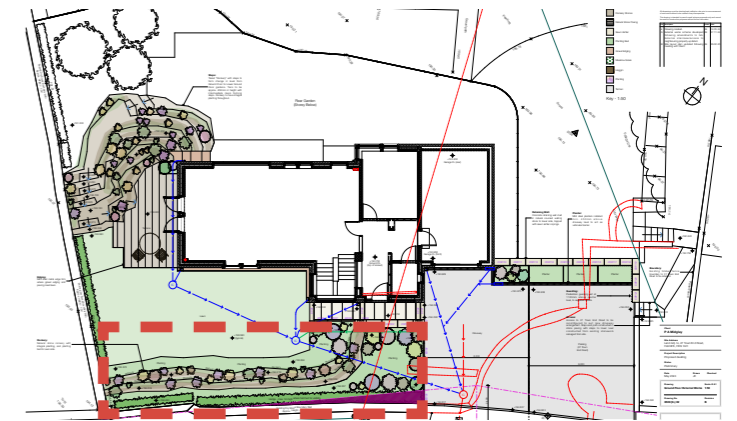


Buddleja 'Sungold'



PLANTING PLANS

Front Garden - Rockery and Front beds



1 Front Garden - Rockery and beds
Scale: 1:50



Lavandula



Astrantia varieties



Allium varieties



Phlox 'Bosvigo Pink'



Stipa tenuissima



Cephalaria gigantea



Geranium 'Coomland White'



Erigeron 'Lavender Lady'



Iris 'Quechee'



Iris 'Jane Phillips'



Iris 'Blue Denim'



Veronicastrum 'Roseum'



Deschampsia 'Goldtau'



Mathiasella 'Green Dream'



Verbascum 'Cotswold Beauty'



Salvia 'Caradonna Pink'



Pulsatilla vulgaris



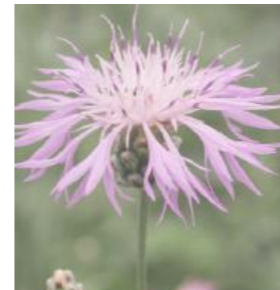
Eragrostis 'Totnes Burgundy'



Salvia 'Caradonna Pink'



Miscanthus 'Ferner Osten'



Centaurea bella



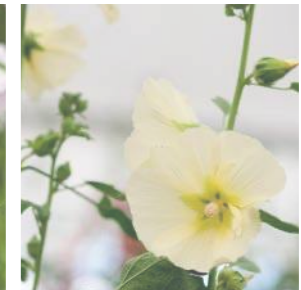
Anemone 'Ruffled Swan'



Phlox 'Clouds of Perfume'



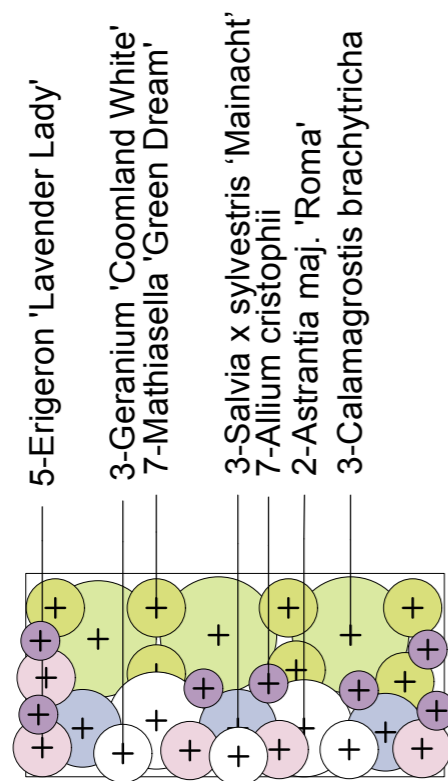
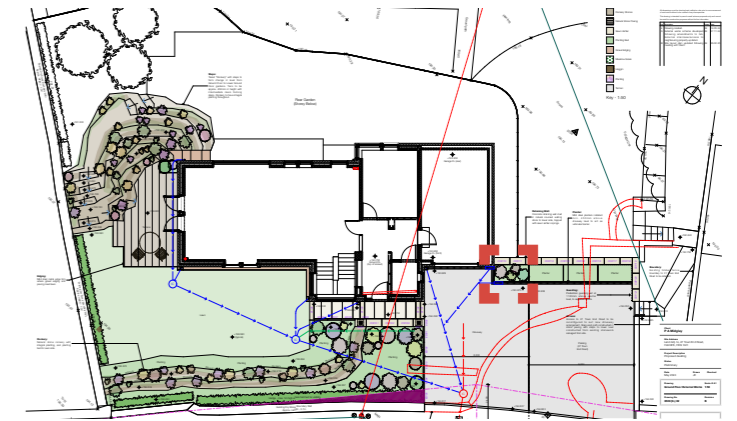
Sidalcea 'Elsie Heugh'



Alcea ficifolia 'Yellow'

PLANTING PLANS

Front Garden - Driveway Planter



Mathiasella 'Green Dream'



Astrantia varieties



Allium varieties



Geranium 'Coomland White'



Salvia 'Mainacht'



Calamagrostis brachytricha

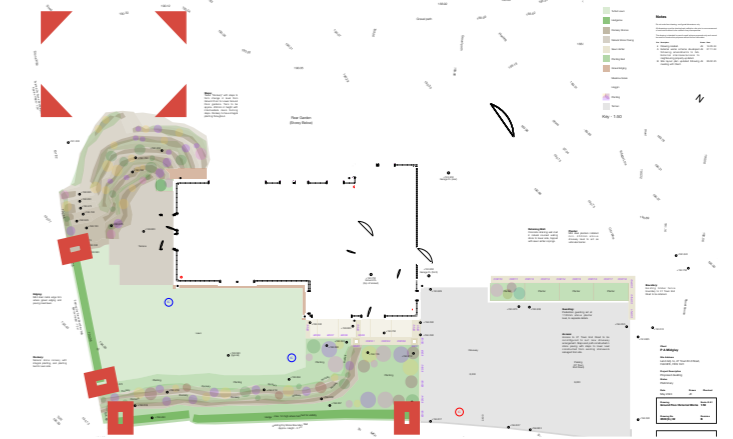


Erigeron Lavender Lady

1 **Front Garden - Driveway Planter**
 Scale: 1:50

PLANTING PLANS

Boundary Hedge



Osmanthus x burkwoodii

- Evergreen
- Leaves: Small, leathery, glossy dark green, oval shaped with a fine-toothed edge
- Growth rate: Slow to moderate (20-30cm/yr)
- Interest: Highly fragrant, tubular white flowers in spring (Apr-May)
- Key info: Dense, compact habit, low maintenance
- Maintenance: Prune lightly after flowering to maintain shape

PLANTING PLANS

Fruit Trees



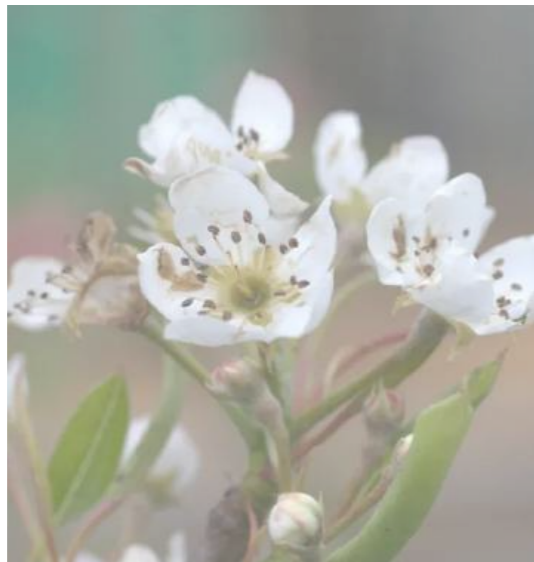
Prunus domestica 'Opal'

- Height 2.5-4m
- White blossom in early spring
- Reliable heavy cropper
- Red-flushed, yellow skinned fruit with golden flesh
- Self fertile
- RHS Award of Garden Merit



Malus domestica 'Bramley's Seedling' (M26 root stock)

- Height: 2.5-3.5m
- Pink blossom in spring
- Crop of large green, flushed red cooking apples
- Semi self fertile
- RHS Award of Garden Merit

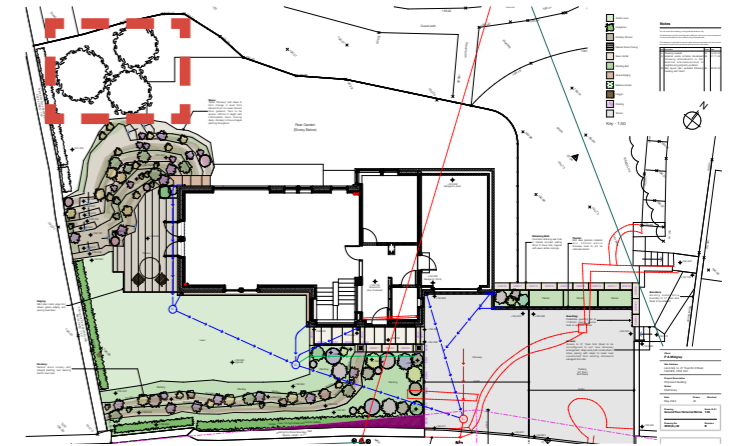


Pear 'Invincible' (Rootstock Quince C)

- Height: 2.5-3m
- Soft white with pink blush blossom in spring
- Reliable heavy cropper even in poor summers
- Semi self-fertile

Meadow

- 51.1 m/sq wildflower turf
- Crocus lawn - 75-100 corms per m/sq, inc. Crocus tommasinianus 'Whitewell Purple' 'Ruby Giant', 'Lilac Beauty', 'Cream Beauty', 'Orange Monarch'.
- Species tulips - 30 bulbs per m/sq, including Tulipa turkestanica, Tulipa sylvestris and Tulipa clusiana
- Fritillaria meleagris - 30 bulbs per m/sq
- Naturalising daffodils - 20-25 bulbs per m/sq, including Narcissus poeticus var. recurvus, Narcissus 'Actaea', Narcissus 'W.P.Milner', Narcissus 'Minnow'.
- Colchicum (autumn flowering crocus) - 75-100 corms per m/sq, including Colchicum autumnale and Colchicum 'Waterlily'



Bulb Mix for Planting Beds

- Tulips, 20-25 bulbs per m/sq, Daffodils 15-20 per m/sq, Fritillaria spot planting
- Mix includes Tulip 'Viridic', Tulip 'Spring Green', Tulip 'Little Beauty', Narcissus Thalia, Narcissus papyraceus 'Ziva', Fritillaria persica 'Ivory Bells' and 'Green Dreams', Convallaria majalis var. rosea, Fritillaria imperialis