


Designs, drawing and contents are not to be copied or distributed to third parties without the written permission of PTSG Access and Safety LTD.


Under Construction (Design and Management) Regulations 2015 [CDM] any person affecting the design shown will be classed as the designer and will assume full CDM responsibility.

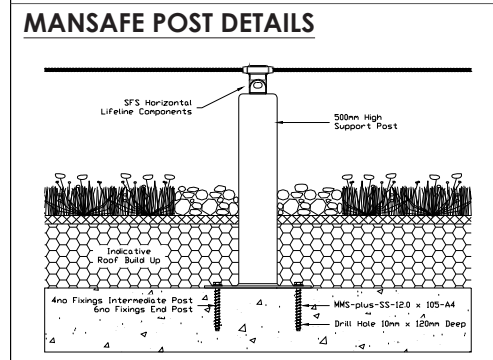
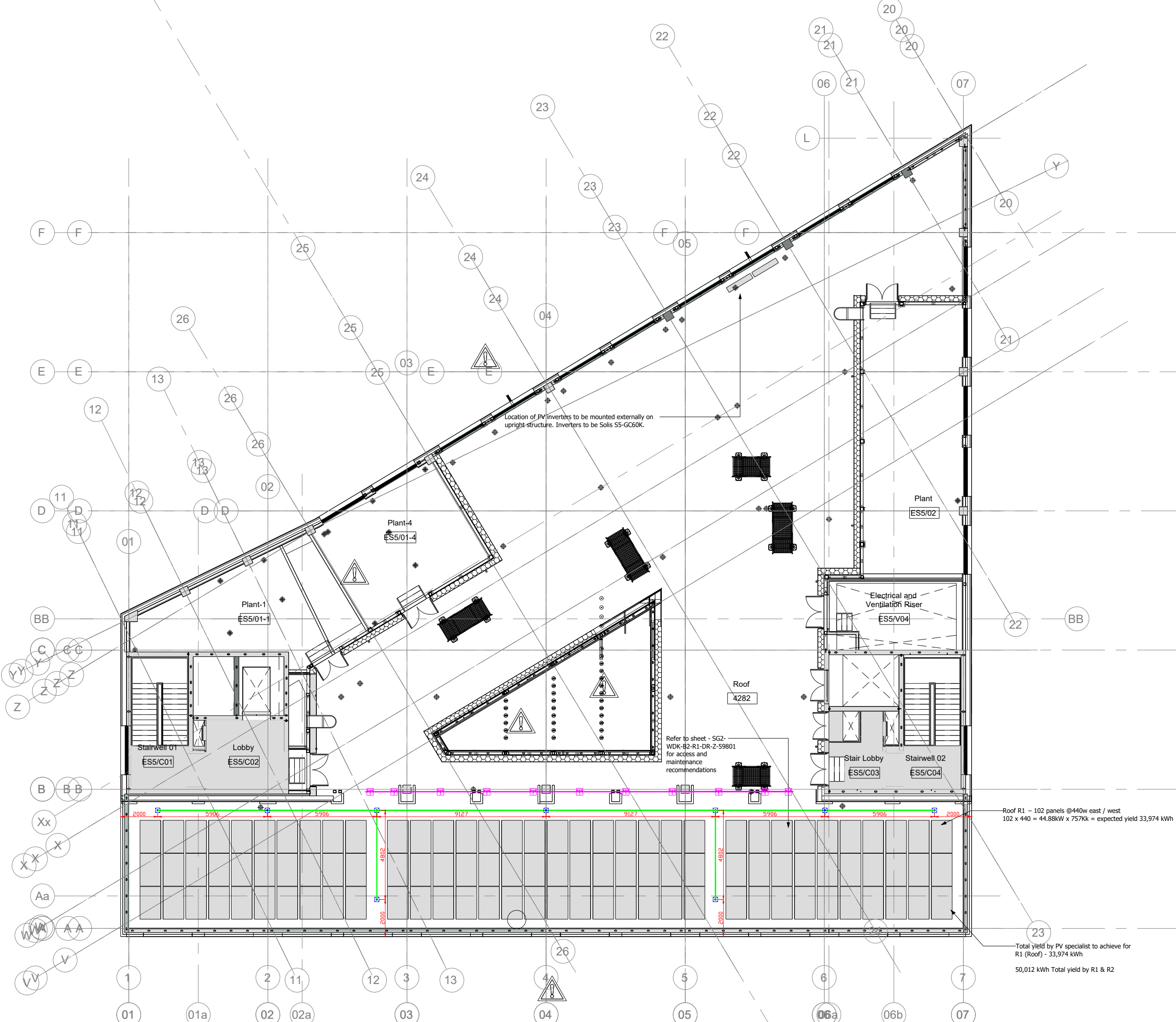
On receipt of any design the client accept full responsibility for change management requirements reference can be found within L153 CDM ACOP paragraph 72.

Awareness for the responsibilities and duties owed by clients under these regulations can be found within Industry guidance for clients (CDM15/1).

LEGEND:

 Mansafe System

 AKM Guardrail Fixed to Concrete



Access and Safety Ltd

PTSG Access and Safety Ltd. TEL. 01997 668 771
 13 - 14 Fleming Court FAX. 01977 668 772
 Whistler Drive
 Glasshoughton www.ptsg.co.uk

CLIENT: NRA ROOFING

PROJECT: UNIVERSITY OF HUDDERSFIELD SOUTHGATE 2

DRAWING TITLE: ROOF PLAN R1 - ACCESS AND SAFETY LAYOUT

DRAWING NUMBER: SG2-PTSG-B2-R1-DR-X-26480

SCALE:	DRAWN:	DATE:	LOCATION:
NTS	CN	18.03.2025	UK
PROJECT NO.	CHECKED:	OFFICE:	DELIVERY:
	BW	OCKE	OCKE

REV	DESCRIPTION	DATE	NAME
P01	FOR APPROVAL	18.03.25	CN
P02	UPDATED AS PER COMMENTS	31.03.25	CN
P03	UPDATED AS PER COMMENTS	03.04.25	CN

THE INFORMATION CONTAINED HEREIN IS THE PROPERTY OF PTSG ACCESS AND SAFETY LIMITED AND IS NOT TO BE ALTERED, REPRODUCED OR COMMUNICATED TO A THIRD PERSON OR USED IN ANY MANNER WHATSOEVER WITHOUT THE EXPRESS WRITTEN PERMISSION OF PTSG ACCESS AND SAFETY LIMITED.

DO NOT SCALE FROM THIS DRAWING.