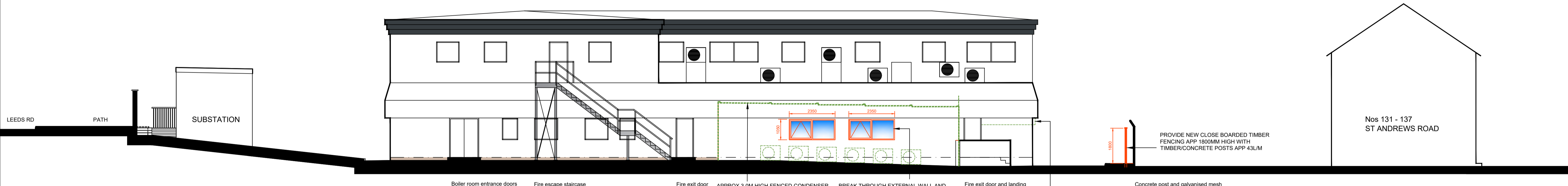




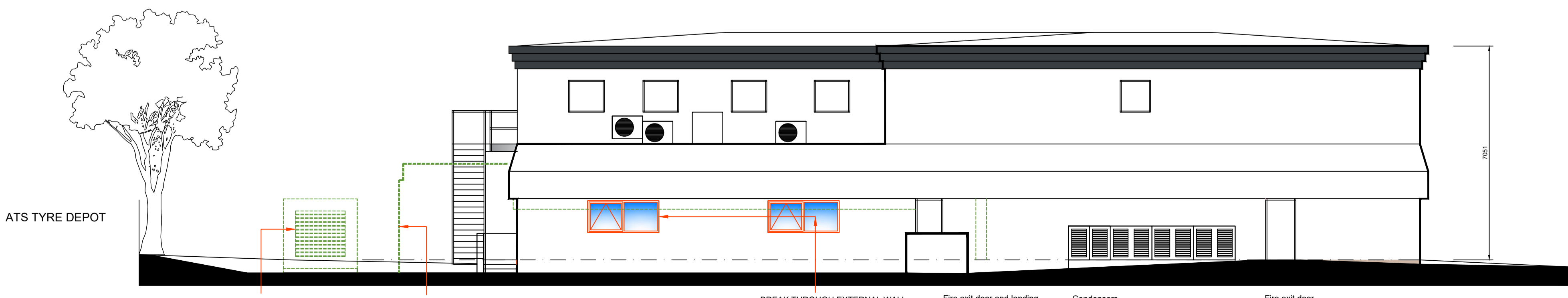
NORTH ELEVATION (FRONT)
Facing car park



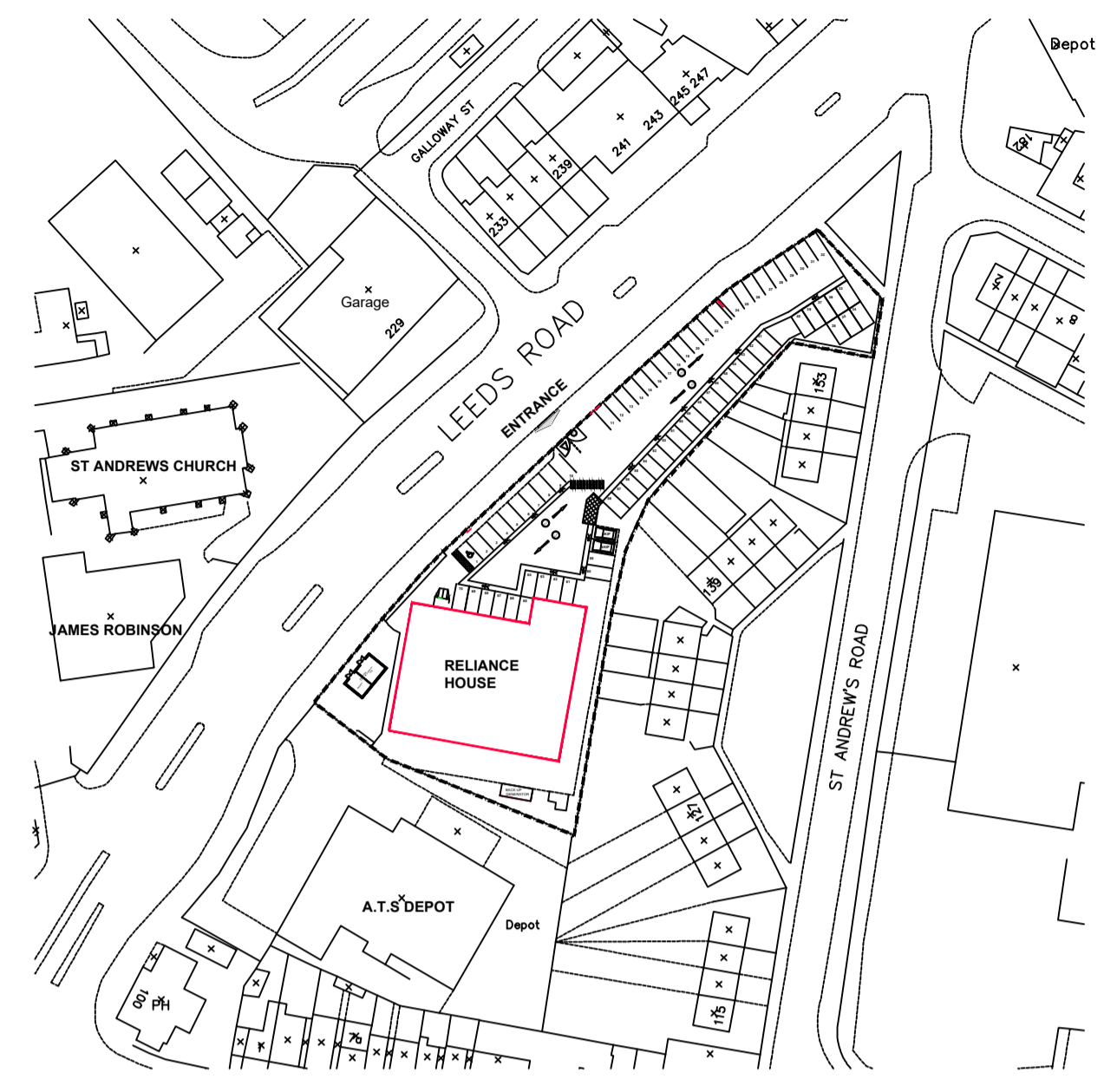
EAST ELEVATION (SIDE)
Viewed from Leeds Road



SOUTH ELEVATION (REAR)
Opposite ATS Tyres



WEST ELEVATION (SIDE)
Facing towards St Andrews Rd



BLOCKPLAN 1 : 1250

----- REMOVED WORKS
 ——— NEW WORKS



STARK Building Materials UK Limited
 Development Team, 1st Floor, Parkview House,
 Woodvale Road,
 Brighouse, HD6 4AB

PROPOSED ELEVATIONS

**RELIANCE HOUSE
 HUDDERSFIELD**

BRANCH:	HUDDERSFIELD
	RELIANCE HOUSE
	LEEDS ROAD
	HUDDERSFIELD
BRANCH No:	---
DATE:	05-02-25
SCALE:	1:100@A1
DRAWN BY:	M.L.
DRAWING No:	HRH047

