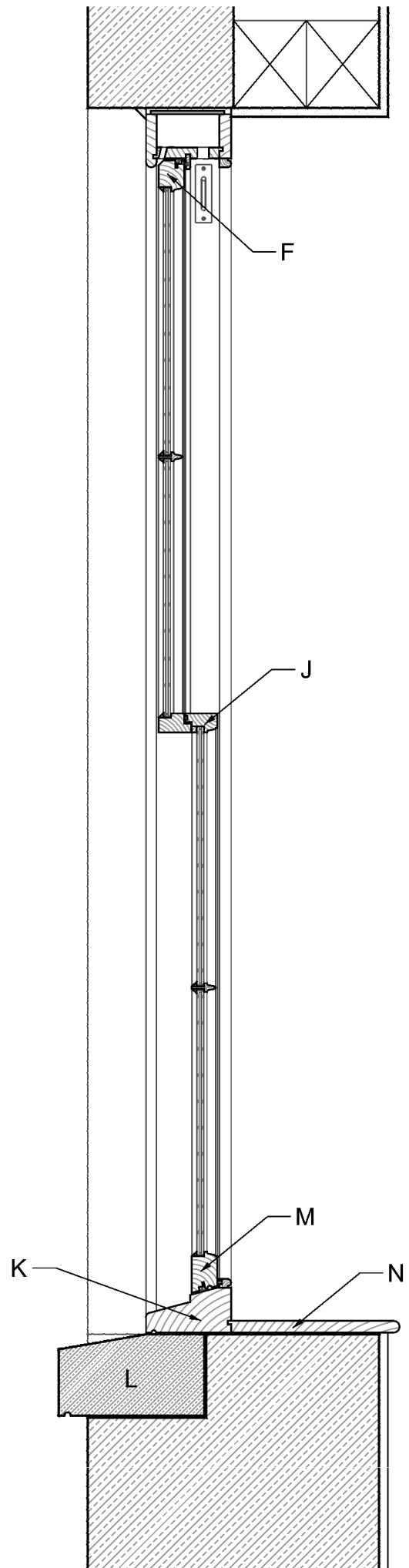
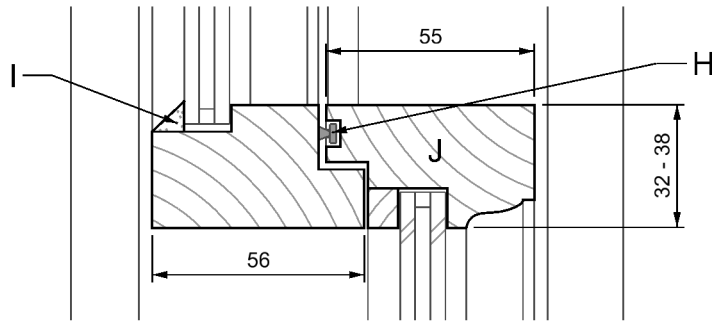
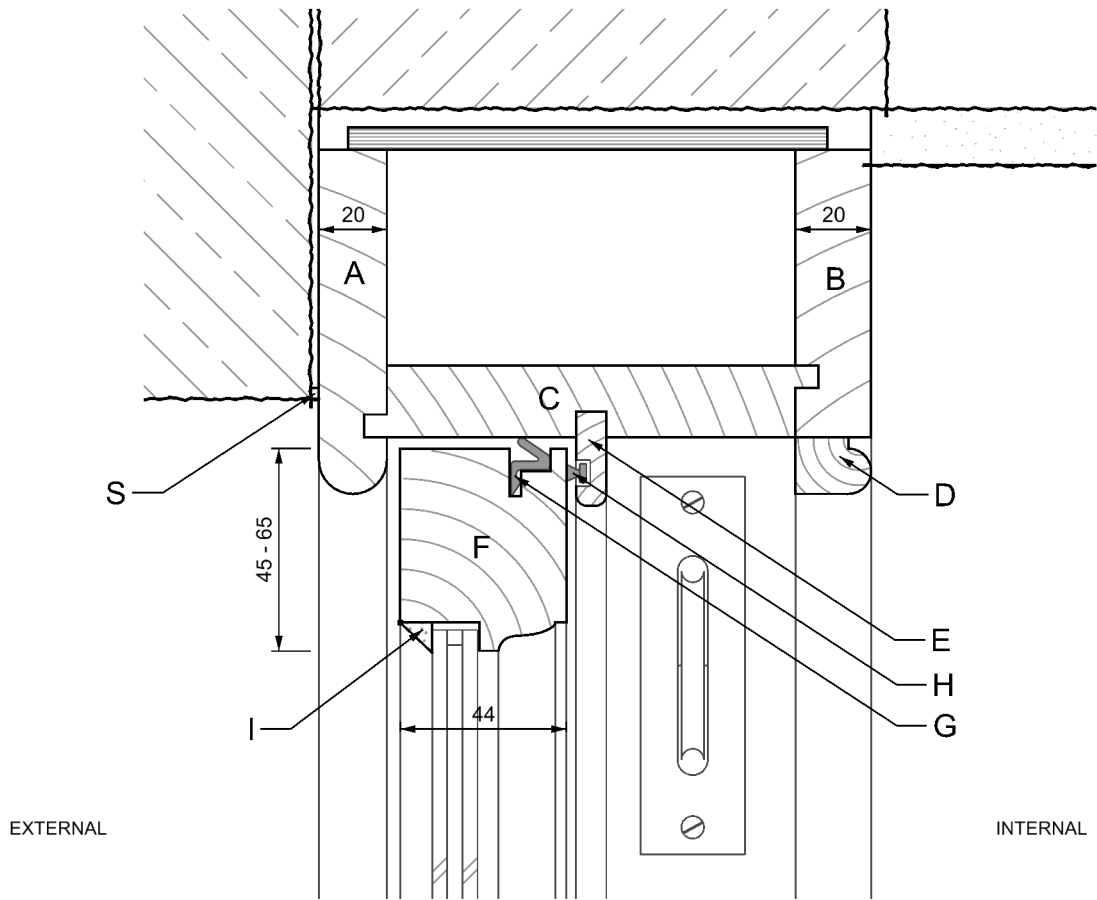


- A OUTER LINING
- B INNER LINING
- C SOFFIT LINING
- D STAFF BEAD
- E PARTING BEAD
- F TOP RAIL
- G AQUAMAC 21 DRAUGHT SEAL OR EQUIVALENT
- H DRAUGHT STRIP
- I GLAZING PUTTY
- J MEETING RAILS
- K TIMBER CILL (HARD WOOD OR ACCOYA)
- L STONE CILL
- M BOTTOM RAIL
- N WINDOW BOARD
- O GLAZING BAR
- P SASH STILE
- Q PULLEY STILE
- R SASH WEIGHTS (CAST IRON OR LEAD)
- S SEALANT POINTING



Style: GEORGIAN SASH WINDOW
Glazing: Double Glazed (Slim 4/4/4)
Drawing: Full Section

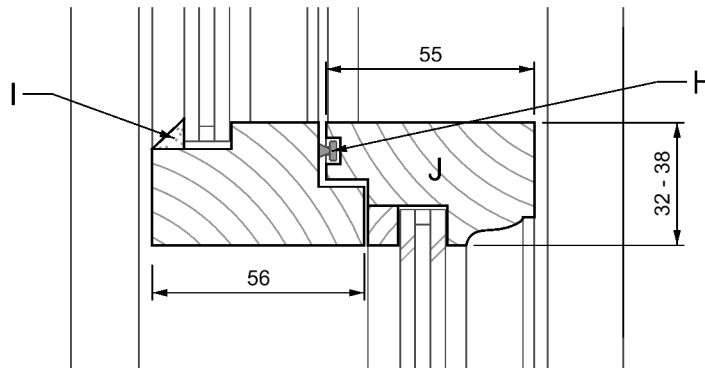
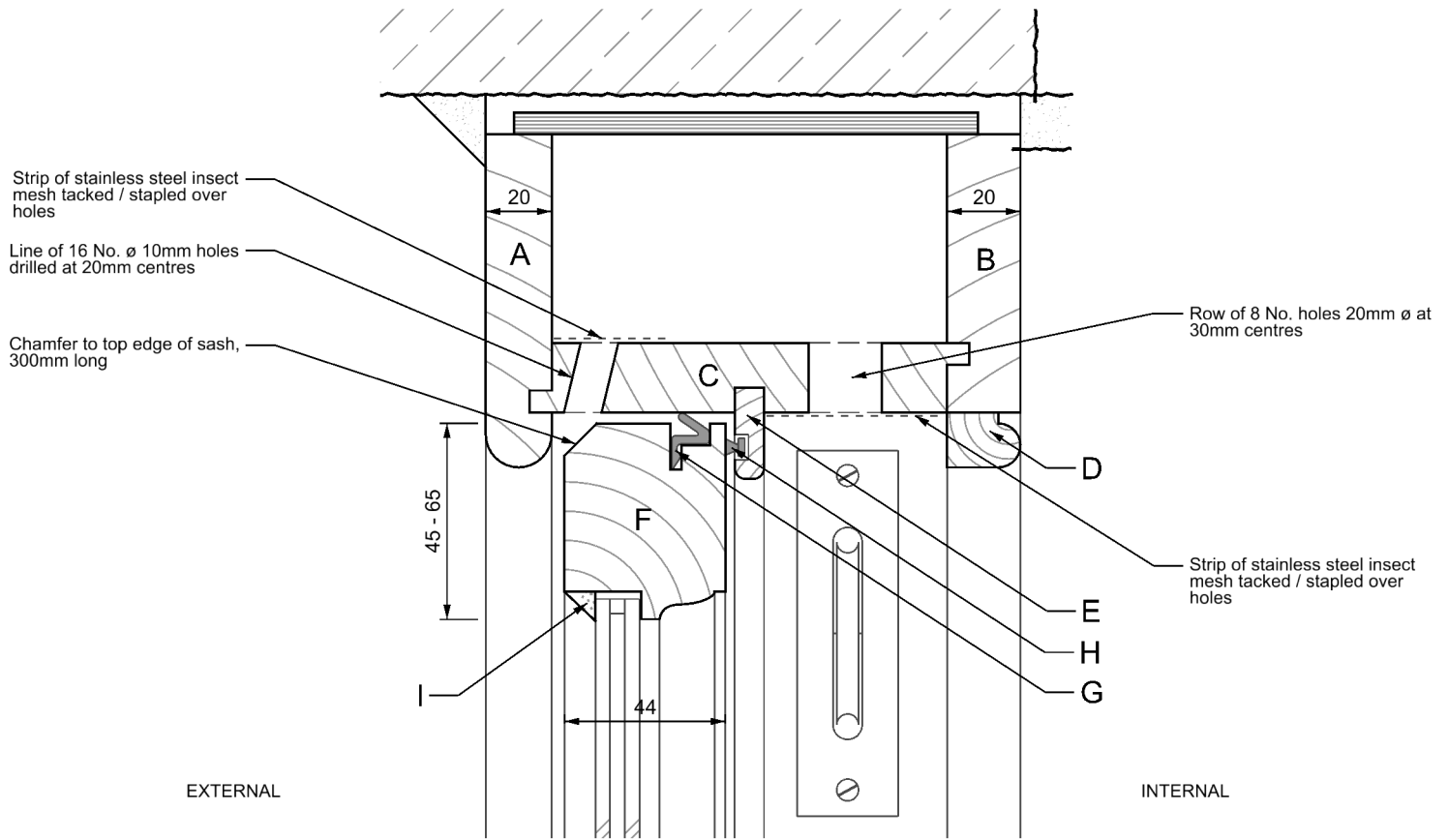
Scale: 1:10 @ A4



Style: GEORGIAN SASH WINDOW
Glazing: Double Glazed (Slim 4/4/4)
Drawing: Head and Meeting Rail

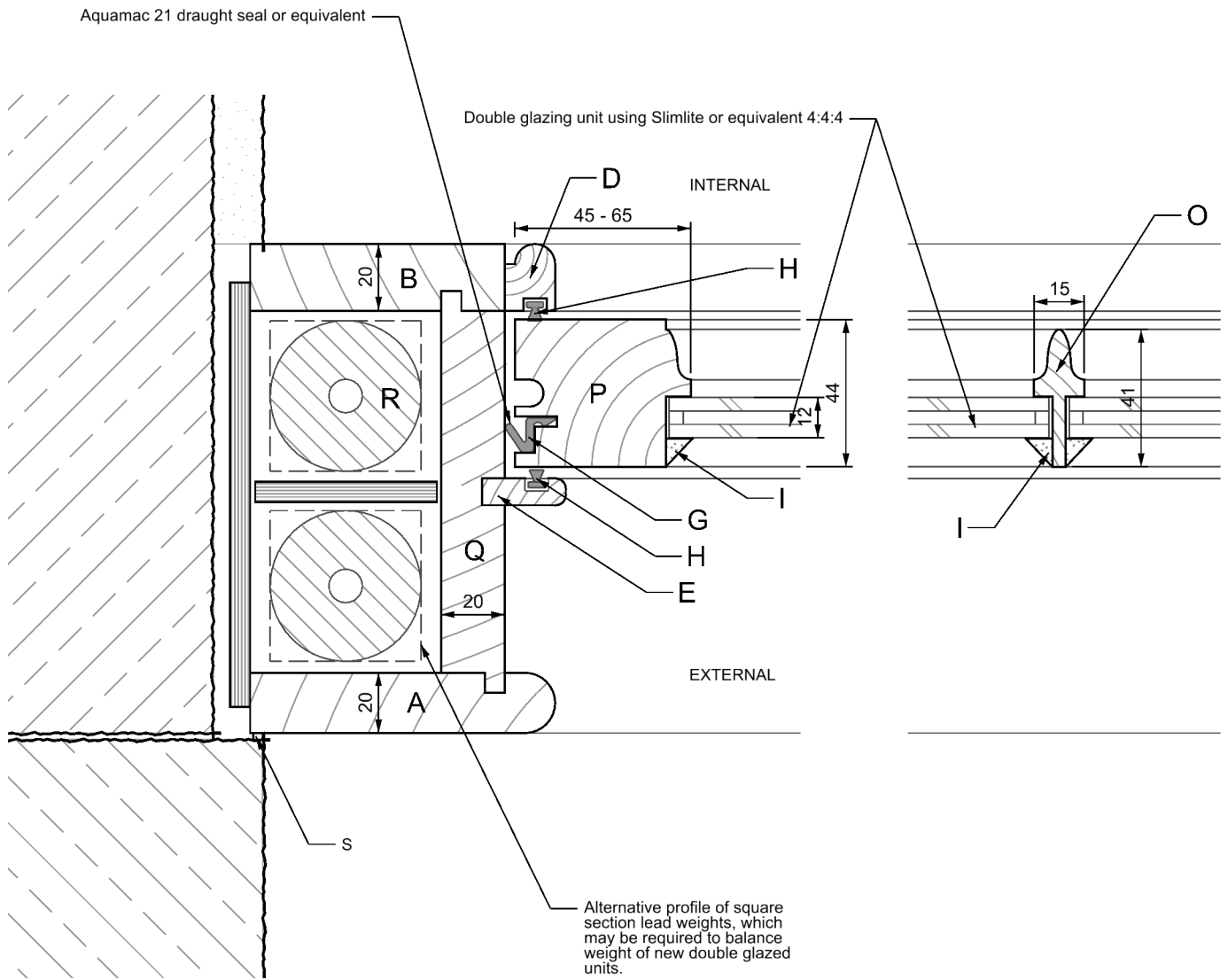
Scale: 1:2 @ A4

A	OUTER LINING	K	TIMBER CILL (HARD WOOD OR ACCOYA)
B	INNER LINING	L	STONE CILL
C	SOFFIT LINING	M	BOTTOM RAIL
D	STAFF BEAD	N	WINDOW BOARD
E	PARTING BEAD	O	GLAZING BAR
F	TOP RAIL	P	SASH STILE
G	AQUAMAC 21 DRAUGHT SEAL OR EQUIVALENT	Q	PULLEY STILE
H	DRAUGHT STRIP	R	SASH WEIGHTS (CAST IRON OR LEAD)
I	GLAZING PUTTY	S	SEALANT POINTING
J	MEETING RAILS		



Style: GEORGIAN SASH WINDOW
Glazing: Double Glazed (Slim 4/4/4)
Drawing: Head with concealed trickle vent and Meeting Rail
Scale: 1:2 @ A4

A	OUTER LINING	K	TIMBER CILL (HARD WOOD OR ACCOYA)
B	INNER LINING	L	STONE CILL
C	SOFFIT LINING	M	BOTTOM RAIL
D	STAFF BEAD	N	WINDOW BOARD
E	PARTING BEAD	O	GLAZING BAR
F	TOP RAIL	P	SASH STILE
G	AQUAMAC 21 DRAUGHT SEAL OR EQUIVALENT	Q	PULLEY STILE
H	DRAUGHT STRIP	R	SASH WEIGHTS (CAST IRON OR LEAD)
I	GLAZING PUTTY	S	SEALANT POINTING
J	MEETING RAILS		



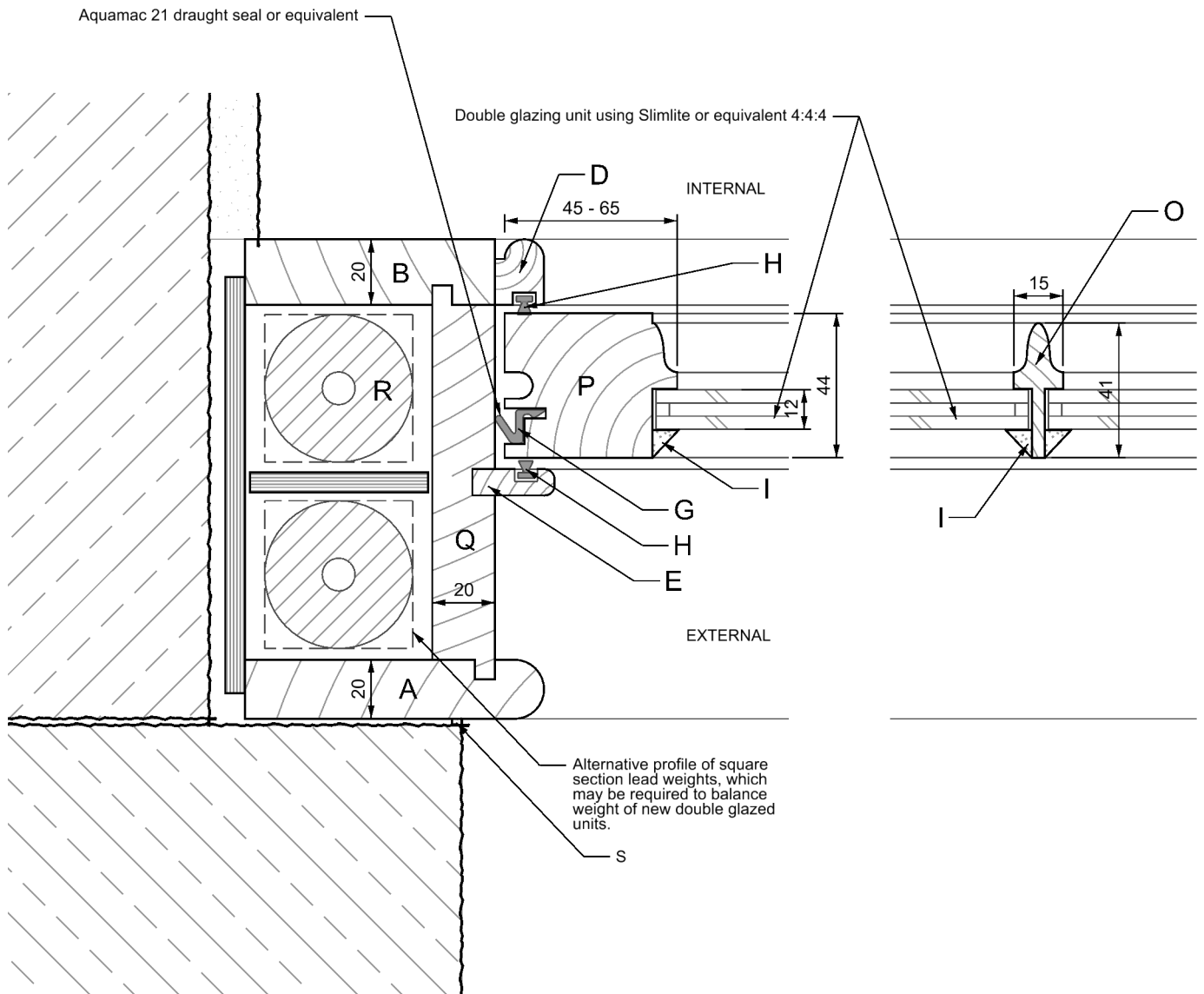
Style: GEORGIAN SASH WINDOW
Glazing: Double Glazed (Slim 4/4/4)
Drawing: Jamb and Glazing Bar

Scale: 1:2 @ A4

A	OUTER LINING	K	TIMBER CILL (HARD WOOD OR ACCOYA)
B	INNER LINING	L	STONE CILL
C	SOFFIT LINING	M	BOTTOM RAIL
D	STAFF BEAD	N	WINDOW BOARD
E	PARTING BEAD	O	GLAZING BAR
F	TOP RAIL	P	SASH STILE
G	AQUAMAC 21 DRAUGHT SEAL OR EQUIVALENT	Q	PULLEY STILE
H	DRAUGHT STRIP	R	SASH WEIGHTS (CAST IRON OR LEAD)
I	GLAZING PUTTY	S	SEALANT POINTING
J	MEETING RAILS		

NOTES:

Glazing - replacement single glazing typically 4mm thick. Upgrade "slim" double glazing units typically 4/4/4mm if rebates can be adapted to suit. Putty - for single glazing traditional linseed putty may be used. Double glazed units may require polymer glazing putty according to the d.g. unit manufacturers recommendation.

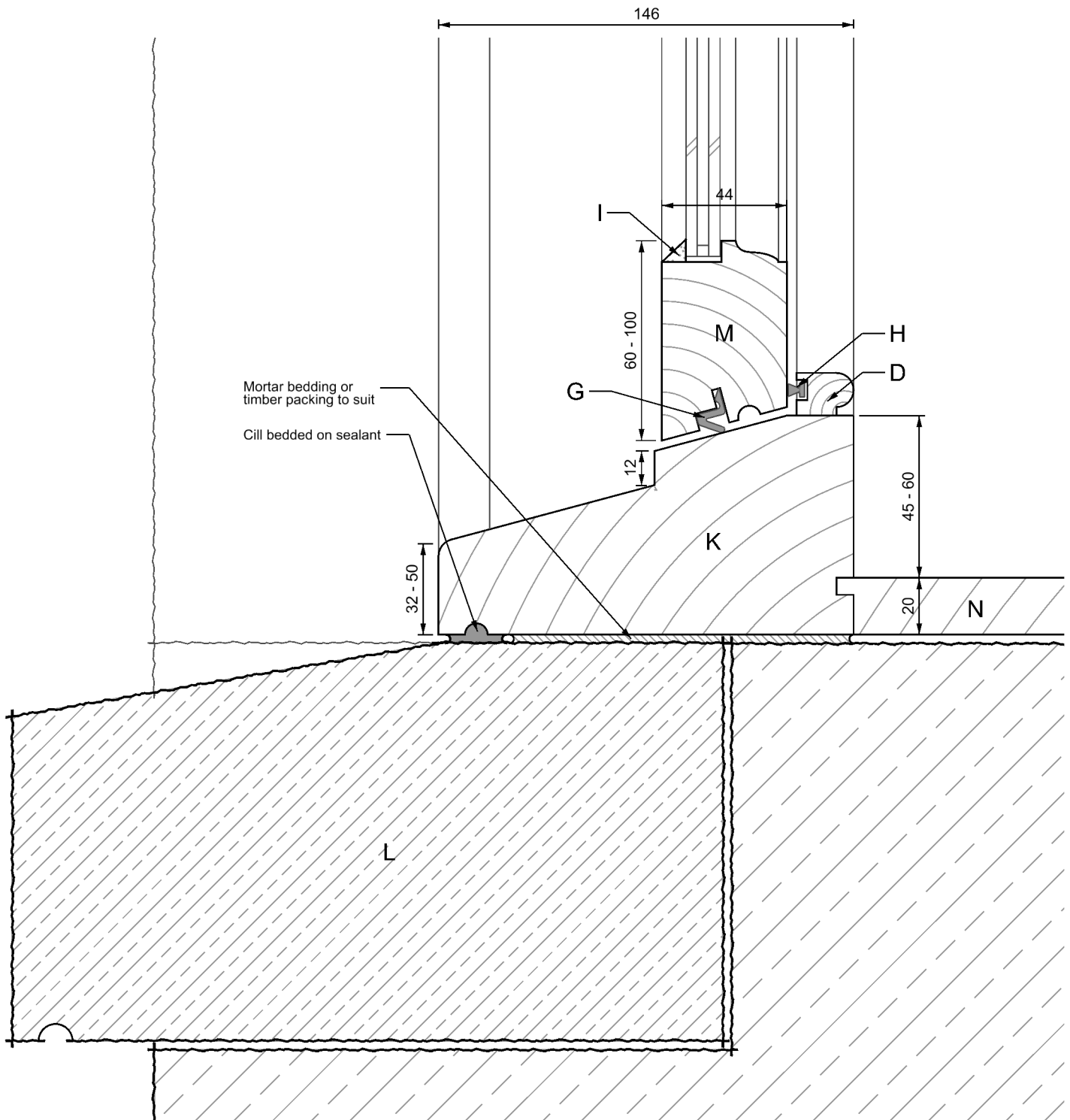


Style: GEORGIAN SASH WINDOW
Glazing: Double Glazed (Slim 4/4/4)
Drawing: Jamb Rebated and Glazing Bar

Scale: 1:2 @ A4

A	OUTER LINING	K	TIMBER CILL (HARD WOOD OR ACCOYA)
B	INNER LINING	L	STONE CILL
C	SOFFIT LINING	M	BOTTOM RAIL
D	STAFF BEAD	N	WINDOW BOARD
E	PARTING BEAD	O	GLAZING BAR
F	TOP RAIL	P	SASH STILE
G	AQUAMAC 21 DRAUGHT SEAL OR EQUIVALENT	Q	PULLEY STILE
H	DRAUGHT STRIP	R	SASH WEIGHTS (CAST IRON OR LEAD)
I	GLAZING PUTTY	S	SEALANT POINTING
J	MEETING RAILS		

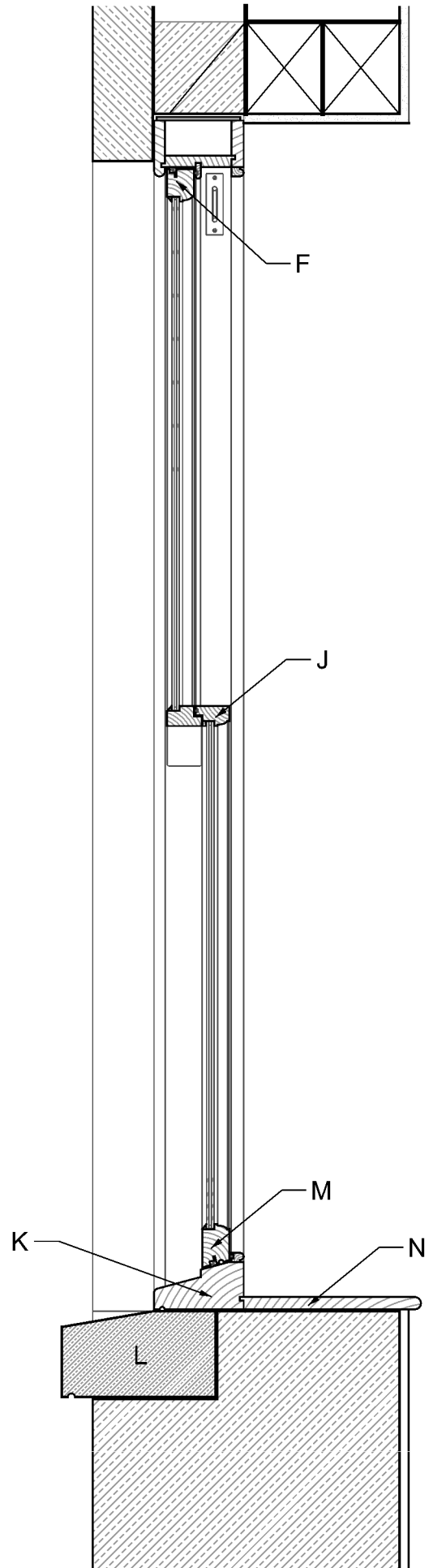
NOTES:
 Glazing - replacement single glazing typically 4mm thick. Upgrade "slim" double glazing units typically 4/4/4mm if rebates can be adapted to suit.
 Putty - for single glazing traditional linseed putty may be used. Double glazed units may require polymer glazing putty according to the d.g. unit manufacturers recommendation.



Style: GEORGIAN SASH WINDOW
Glazing: Double Glazed (Slim 4/4/4)
Drawing: Cill
Scale: 1:2 @ A4

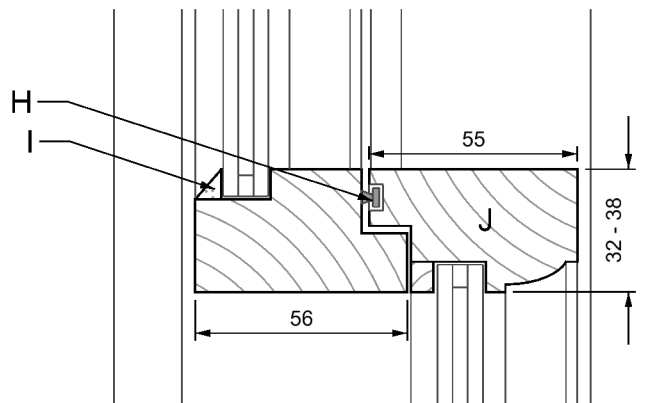
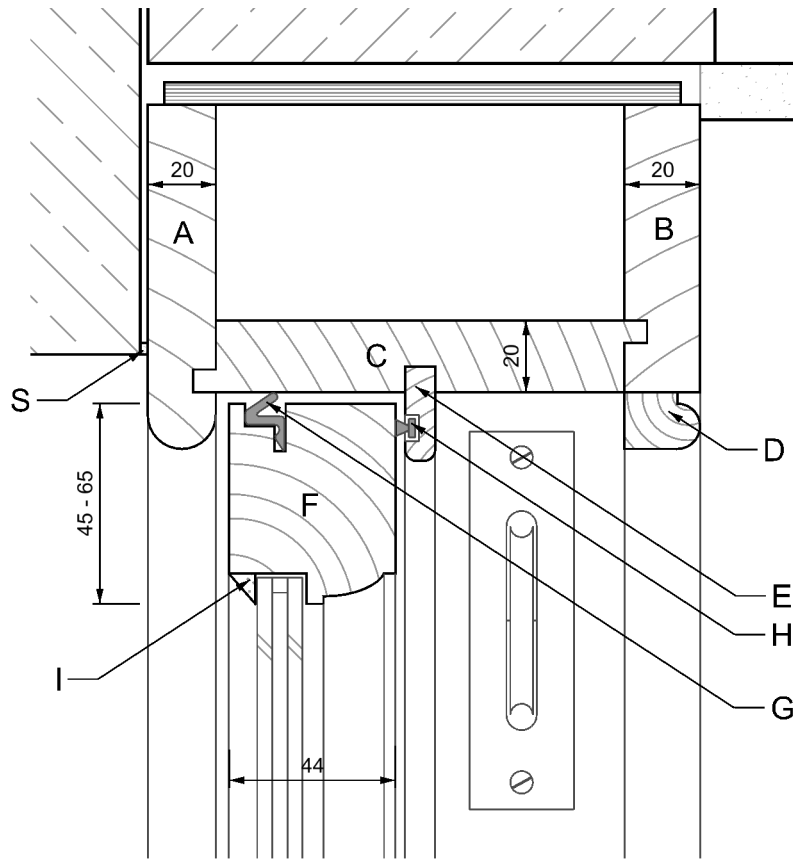
- | | | | |
|---|---------------------------------------|---|----------------------------------|
| A | OUTER LINING | L | WOOD OR ACCOYA) |
| B | INNER LINING | M | STONE CILL |
| C | SOFFIT LINING | N | BOTTOM RAIL |
| D | STAFF BEAD | O | WINDOW BOARD |
| E | PARTING BEAD | P | GLAZING BAR |
| F | TOP RAIL | Q | SASH STILE |
| G | AQUAMAC 21 DRAUGHT SEAL OR EQUIVALENT | R | PULLEY STILE |
| H | DRAUGHT STRIP | S | SASH WEIGHTS (CAST IRON OR LEAD) |
| I | GLAZING PUTTY | | SEALANT POINTING |
| J | MEETING RAILS | | |

- A OUTER LINING
- B INNER LINING
- C SOFFIT LINING
- D STAFF BEAD
- E PARTING BEAD
- F TOP RAIL
- G AQUAMAC 21 DRAUGHT
SEAL OR EQUIVALENT
- H DRAUGHT STRIP
- I GLAZING PUTTY
- J MEETING RAILS
- K TIMBER CILL (HARD
WOOD OR ACCOYA)
- L STONE CILL
- M BOTTOM RAIL
- N WINDOW BOARD
- O GLAZING BAR
- P SASH STILE
- Q PULLEY STILE
- R SASH WEIGHTS (CAST
IRON OR LEAD)
- S SEALANT POINTING



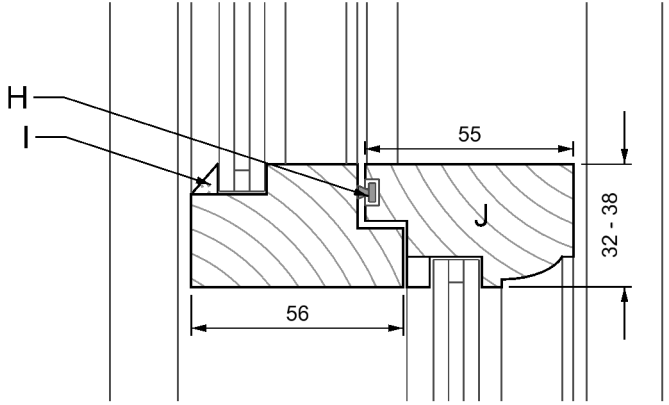
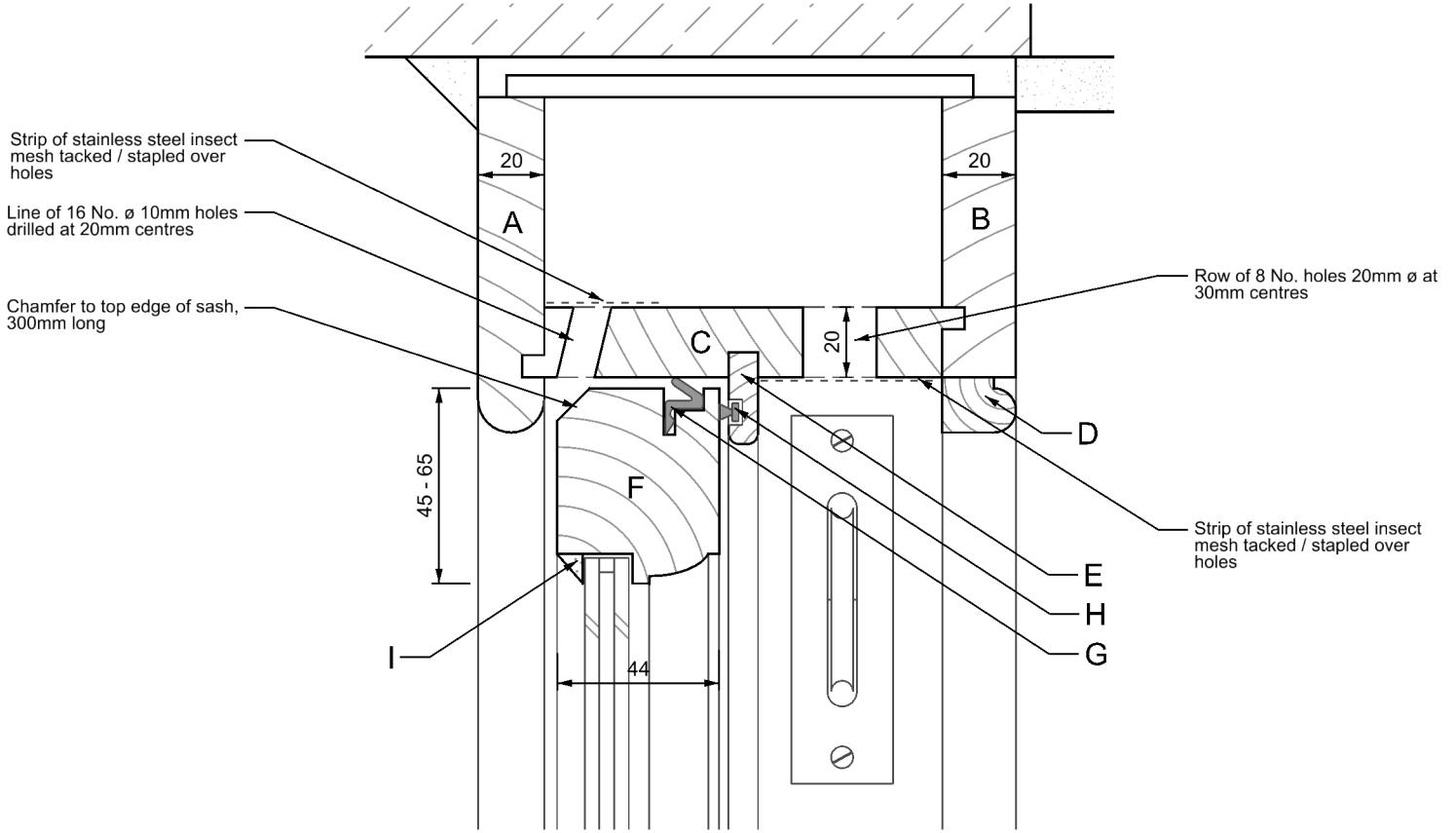
Style: VICTORIAN SASH WINDOW
Glazing: Double Glazed (Slim 4/4/4)
Drawing: Full Section

Scale: 1:10 @ A4



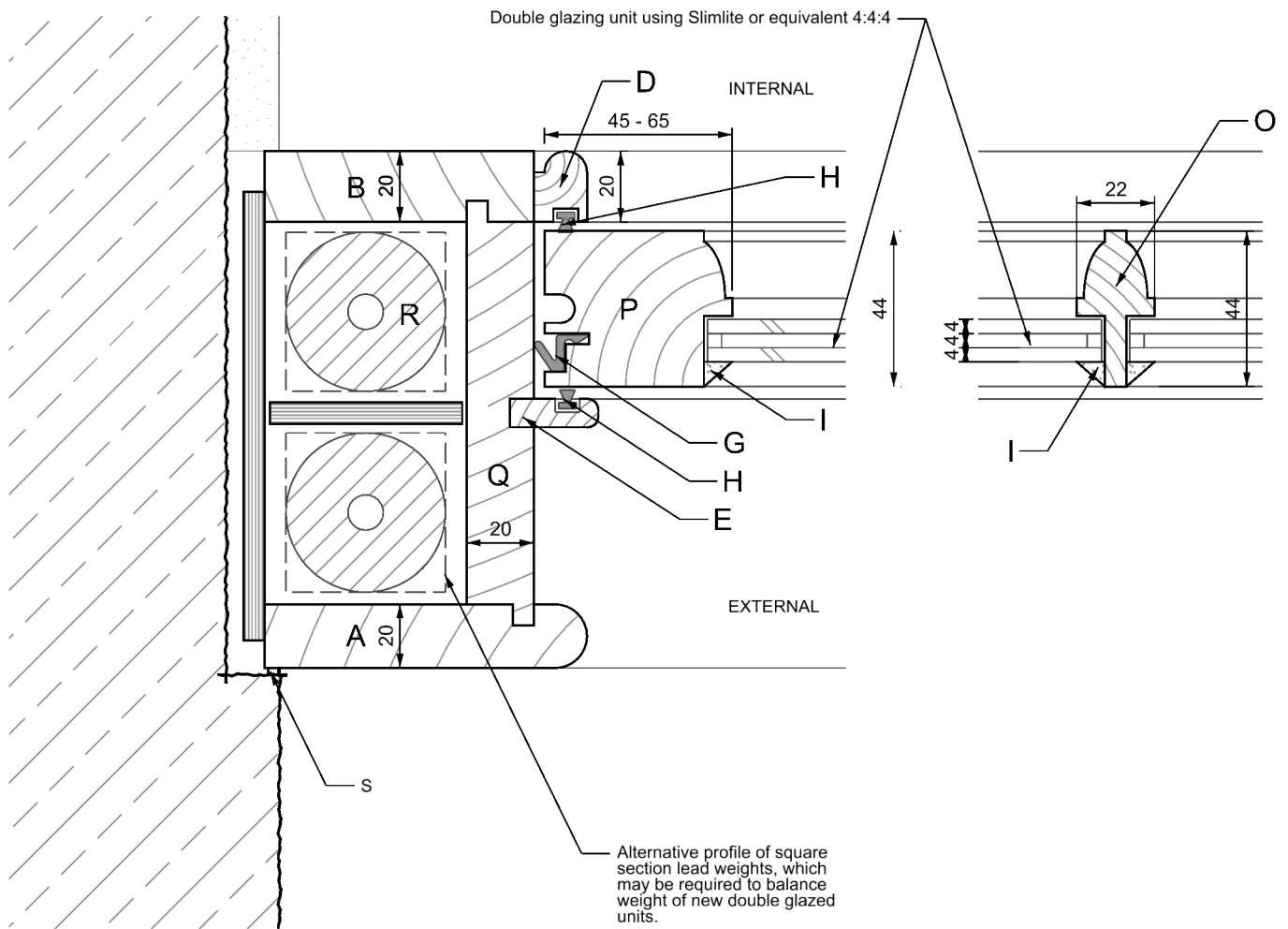
Style: VICTORIAN SASH WINDOW
Glazing: Double Glazed (Slim 4/4/4)
Drawing: Head and Meeting Rail
Scale: 1:2 @ A4

A	OUTER LINING	K	TIMBER CILL (HARD WOOD OR ACCOYA)
B	INNER LINING	L	STONE CILL
C	SOFFIT LINING	M	BOTTOM RAIL
D	STAFF BEAD	N	WINDOW BOARD
E	PARTING BEAD	O	GLAZING BAR
F	TOP RAIL	P	SASH STILE
G	AQUAMAC 21 DRAUGHT SEAL OR EQUIVALENT	Q	PULLEY STILE
H	DRAUGHT STRIP	R	SASH WEIGHTS (CAST IRON OR LEAD)
I	GLAZING PUTTY	S	SEALANT POINTING
J	MEETING RAILS		



Style: VICTORIAN SASH WINDOW
Glazing: Double Glazed (Slim 4/4/4)
Drawing: Head with concealed trickle vent and Meeting Rail
Scale: 1:2 @ A4

- | | | | |
|---|---------------------------------------|---|-----------------------------------|
| A | OUTER LINING | K | TIMBER CILL (HARD WOOD OR ACCOYA) |
| B | INNER LINING | L | STONE CILL |
| C | SOFFIT LINING | M | BOTTOM RAIL |
| D | STAFF BEAD | N | WINDOW BOARD |
| E | PARTING BEAD | O | GLAZING BAR |
| F | TOP RAIL | P | SASH STILE |
| G | AQUAMAC 21 DRAUGHT SEAL OR EQUIVALENT | Q | PULLEY STILE |
| H | DRAUGHT STRIP | R | SASH WEIGHTS (CAST IRON OR LEAD) |
| I | GLAZING PUTTY | S | SEALANT POINTING |
| J | MEETING RAILS | | |



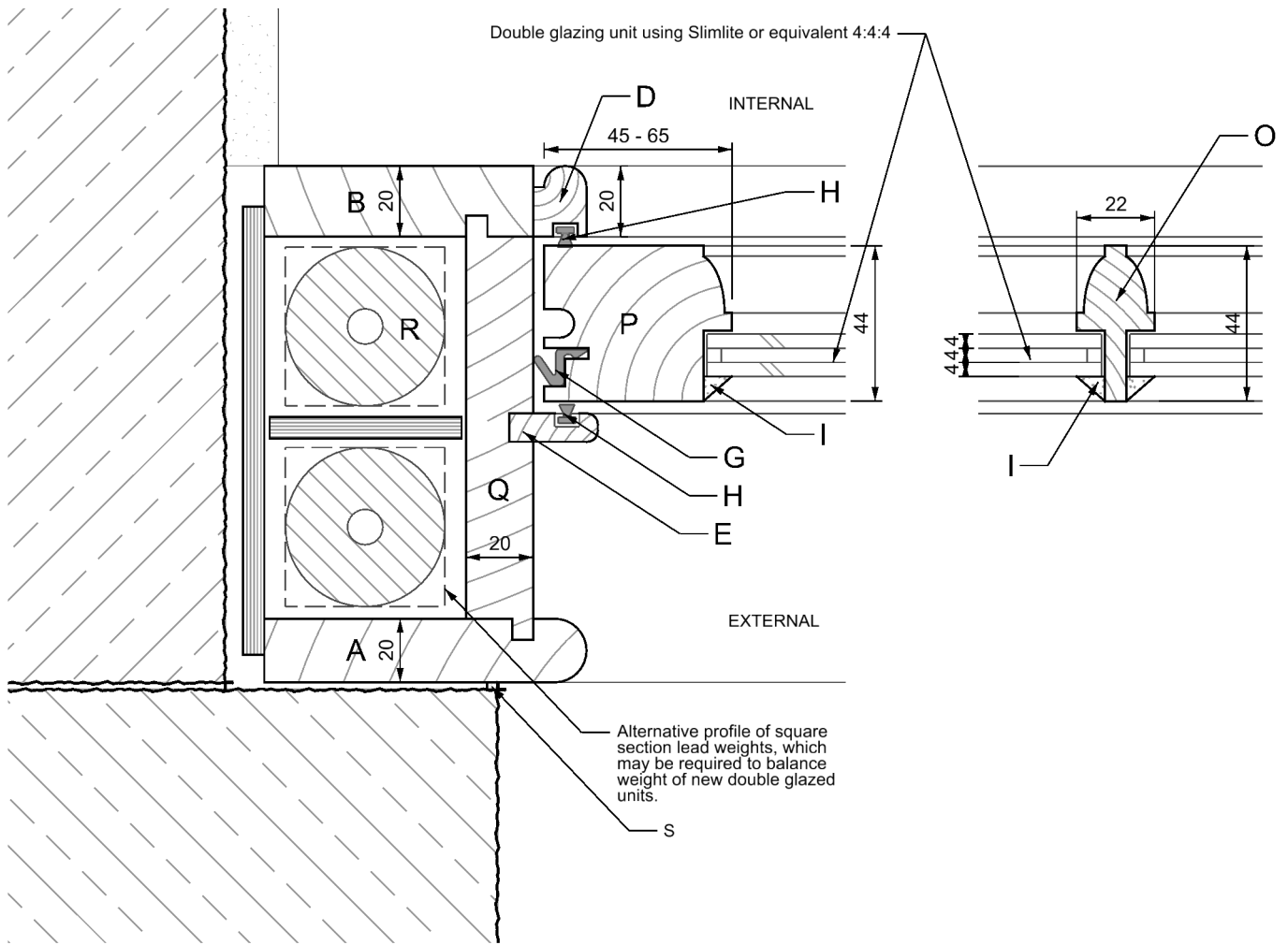
Style: VICTORIAN SASH WINDOW
Glazing: Double Glazed (Slim 4/4/4)
Drawing: Jamb and Glazing Bar

Scale: 1:2 @ A4

A	OUTER LINING	K	TIMBER CILL (HARD WOOD OR ACCOYA)
B	INNER LINING	L	STONE CILL
C	SOFFIT LINING	M	BOTTOM RAIL
D	STAFF BEAD	N	WINDOW BOARD
E	PARTING BEAD	O	GLAZING BAR
F	TOP RAIL	P	SASH STILE
G	AQUAMAC 21 DRAUGHT SEAL OR EQUIVALENT	Q	PULLEY STILE
H	DRAUGHT STRIP	R	SASH WEIGHTS (CAST IRON OR LEAD)
I	GLAZING PUTTY	S	SEALANT POINTING
J	MEETING RAILS		

NOTES:

Glazing - replacement single glazing typically 4mm thick. Upgrade "slim" double glazing units typically 4/4/4mm if rebates can be adapted to suit. Putty - for single glazing traditional linseed putty may be used. Double glazed units may require polymer glazing putty according to the d.g. unit manufacturers recommendation.



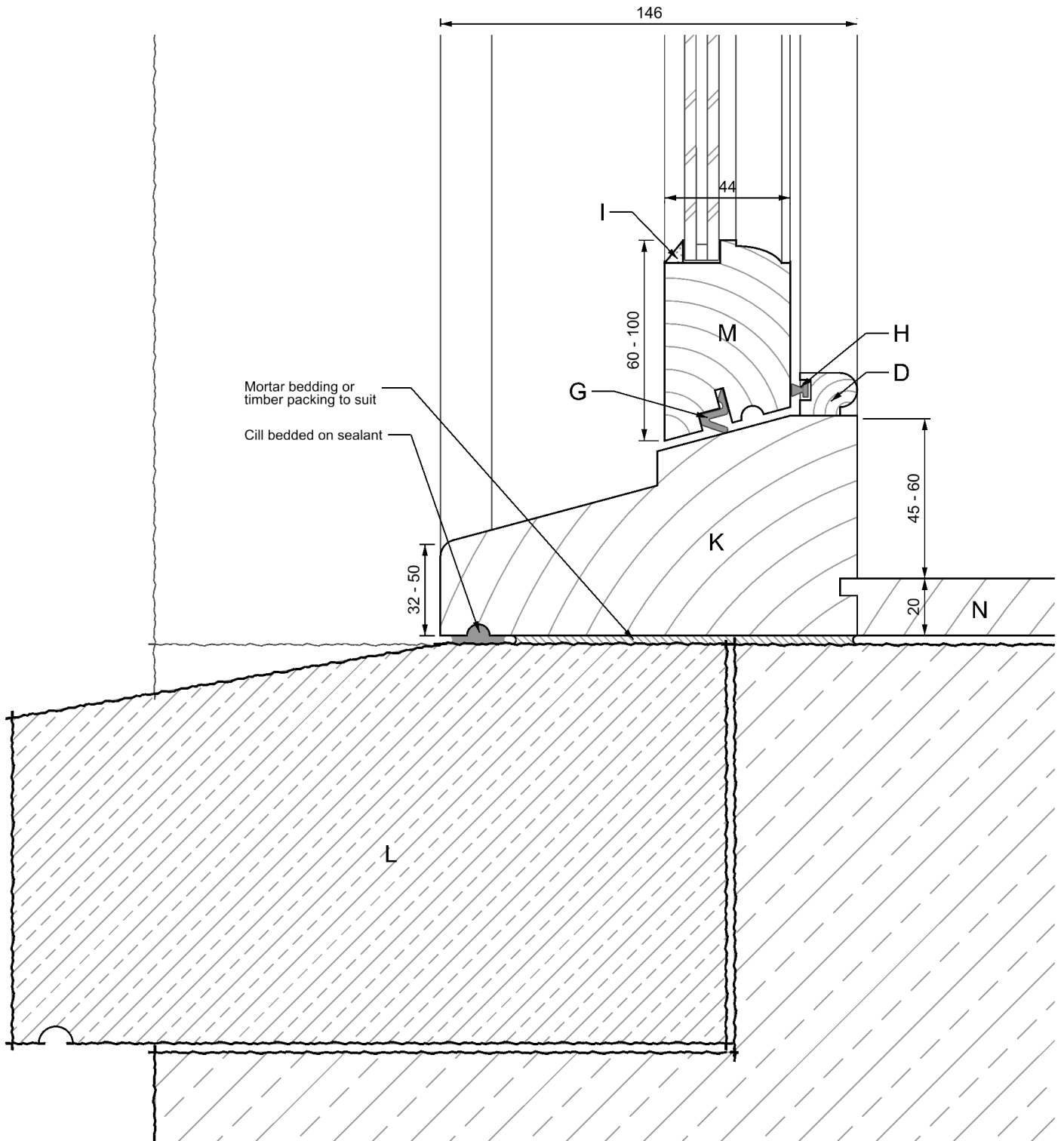
Style: VICTORIAN SASH WINDOW
Glazing: Double Glazed (Slim 4/4/4)
Drawing: Jamb Rebated and Glazing Bar

Scale: 1:2 @ A4

A	OUTER LINING	K	TIMBER CILL (HARD WOOD OR ACCOYA)
B	INNER LINING	L	STONE CILL
C	SOFFIT LINING	M	BOTTOM RAIL
D	STAFF BEAD	N	WINDOW BOARD
E	PARTING BEAD	O	GLAZING BAR
F	TOP RAIL	P	SASH STILE
G	AQUAMAC 21 DRAUGHT SEAL OR EQUIVALENT	Q	PULLEY STILE
H	DRAUGHT STRIP	R	SASH WEIGHTS (CAST IRON OR LEAD)
I	GLAZING PUTTY	S	SEALANT POINTING
J	MEETING RAILS		

NOTES:

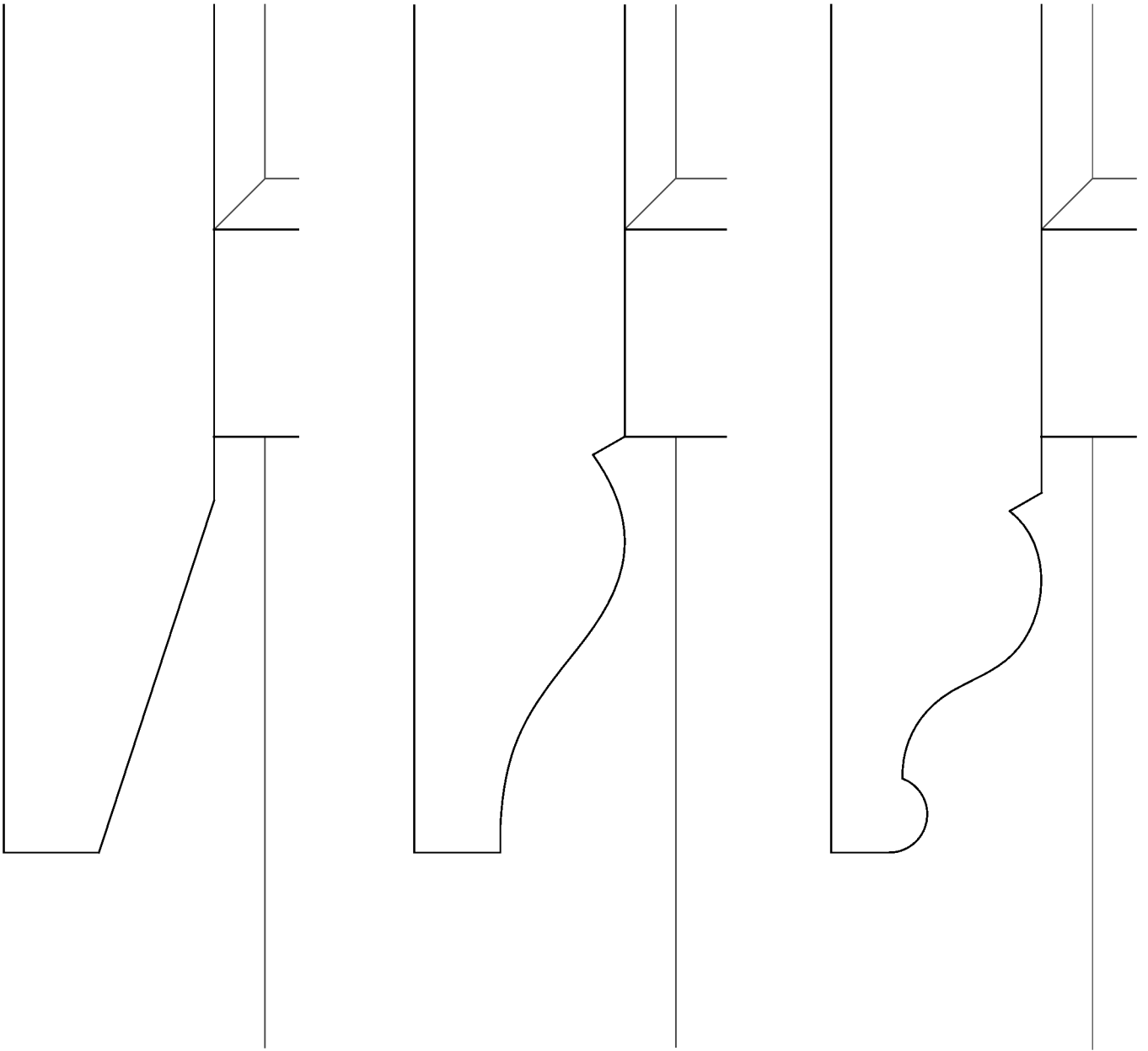
Glazing - replacement single glazing typically 4mm thick. Upgrade "slim" double glazing units typically 4/4/4mm if rebates can be adapted to suit. Putty - for single glazing traditional linseed putty may be used. Double glazed units may require polymer glazing putty according to the d.g. unit manufacturers recommendation.



Style: VICTORIAN SASH WINDOW
Glazing: Double Glazed (Slim 4/4/4)
Drawing: Cill

Scale: 1:2 @ A4

A	OUTER LINING	K	TIMBER CILL (HARD WOOD OR ACCOYA)
B	INNER LINING	L	STONE CILL
C	SOFFIT LINING	M	BOTTOM RAIL
D	STAFF BEAD	N	WINDOW BOARD
E	PARTING BEAD	O	GLAZING BAR
F	TOP RAIL	P	SASH STILE
G	AQUAMAC 21 DRAUGHT SEAL OR EQUIVALENT	Q	PULLEY STILE
H	DRAUGHT STRIP	R	SASH WEIGHTS (CAST IRON OR LEAD)
I	GLAZING PUTTY	S	SEALANT POINTING
J	MEETING RAILS		



Drawing: Typical Horns

Scale: 1:1 @ A4