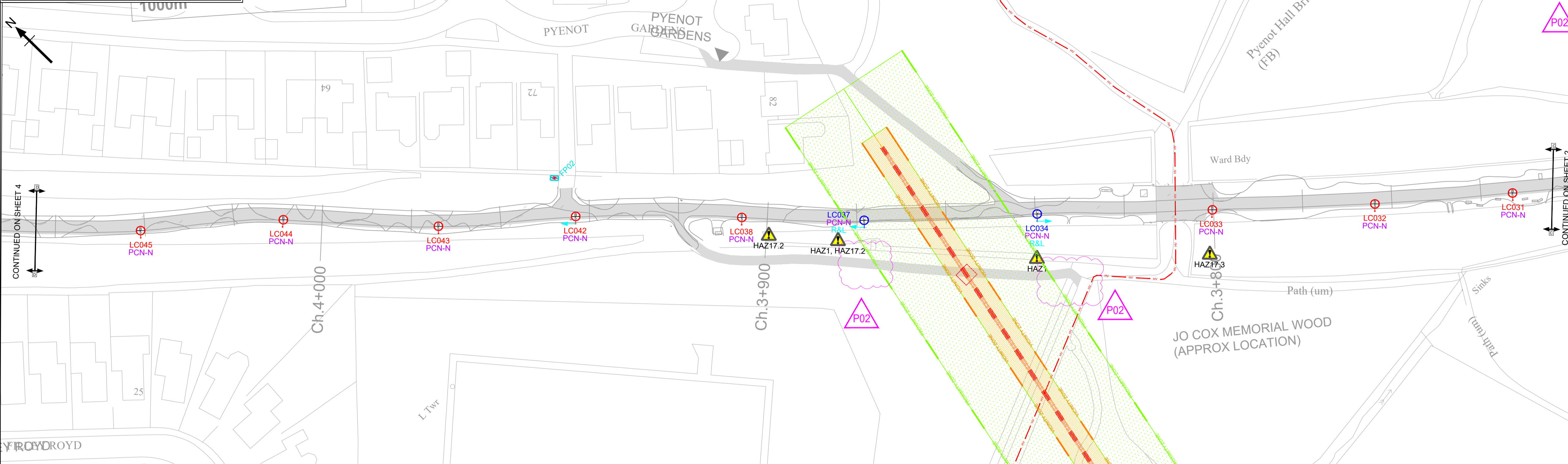


NOT FOR CONSTRUCTION TO TESCO

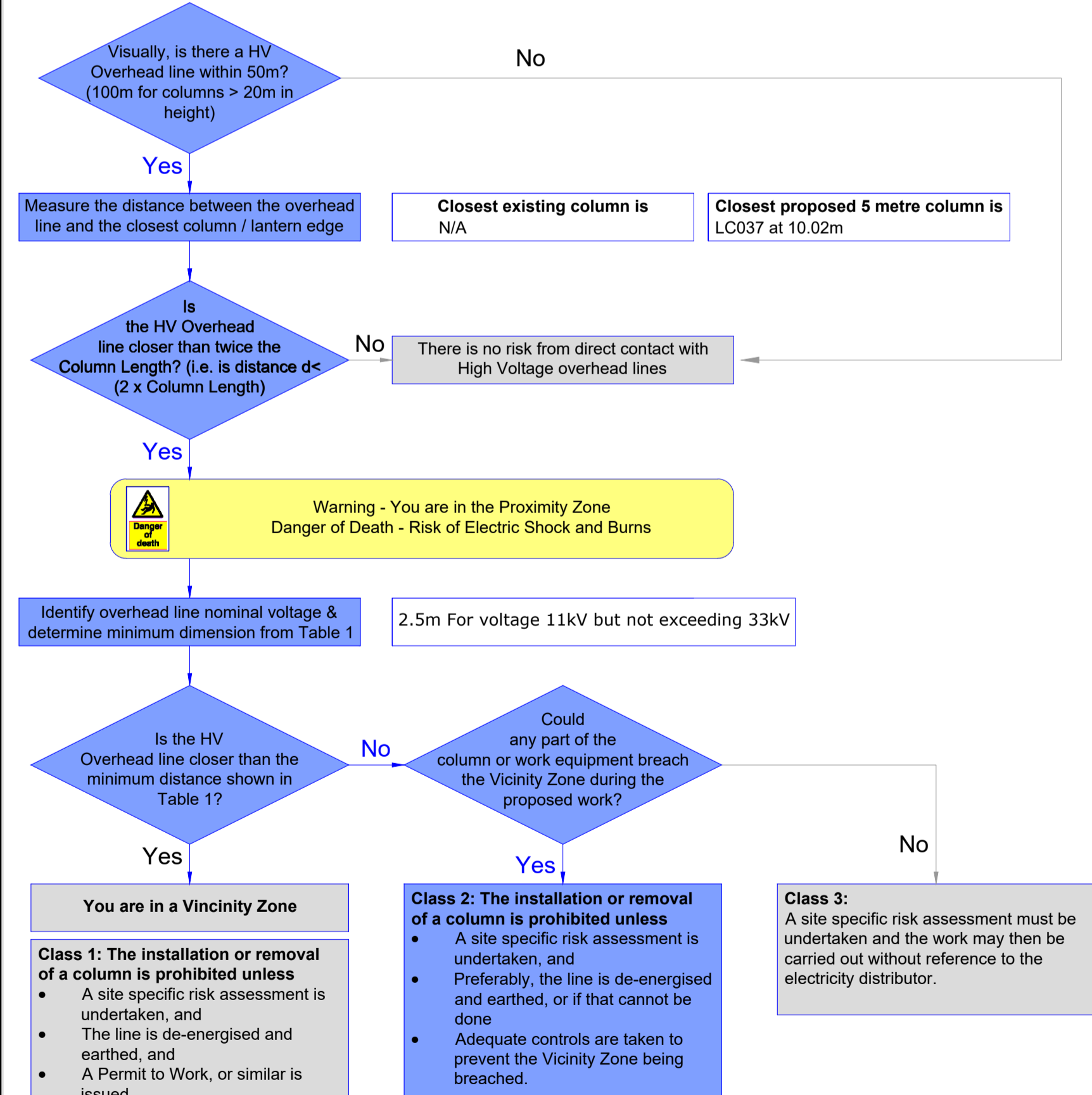


QTY.	SYMBOL	DESCRIPTION
57		PROPOSED 5m TUBULAR STEEL COLUMN WITH PLANTED BASE AND POST TOP MOUNTED LUMINAIRE: MANUFACTURER: ORANGETEK MODEL: IGNIS MINI PLUS FINISH: TBC BY KC OPTIC: NPE FLUX: 1.41klm POWER: 10W CCT: 3000K CONTROL: CMS NODE + NEMA SOCKET AS PER KC ADOPTABLE SPECIFICATION
1x2		PROPOSED 5m TUBULAR COLUMN WITH PLANTED BASE, TWIN HEAD ADAPTER AND POST TOP MOUNTED TWIN HEAD LUMINAIRE: MANUFACTURER: ORANGETEK MODEL: IGNIS MINI PLUS FINISH: TBC BY KC OPTIC: NPE FLUX: 1.41klm POWER: 10W CCT: 3000K CONTROL: CMS NODE + NEMA SOCKET AS PER KC ADOPTABLE SPECIFICATION
2		PROPOSED 5m TUBULAR STEEL COLUMN WITH PLANTED BASE AND POST TOP MOUNTED LUMINAIRE: MANUFACTURER: ORANGETEK MODEL: IGNIS MINI PLUS FINISH: TBC BY KC OPTIC: NPE FLUX: 1.72klm POWER: 11W CCT: 3000K CONTROL: CMS NODE + NEMA SOCKET AS PER KC ADOPTABLE SPECIFICATION
4		PROPOSED 5m TUBULAR STEEL RAISE AND LOWER MID-HINGED COLUMN WITH PLANTED BASE AND POST TOP MOUNTED LUMINAIRE AS ABOVE

DIRECTION OF FALL FOR RAISE AND LOWER COLUMN
 PROPOSED INDICATIVE COLUMN ID NUMBERS NEW PRIVATE SUPPLY RAISE AND LOWER COLUMN
 PROPOSED FEEDER PILLAR SEE ELECTRICAL SCHEMATICS 2753-DFL-HLG-XX-CA-EO-14001-S3-P01 FOR FURTHER DETAILS.
 PROXIMITY ZONE
 VICINITY ZONE

EXISTING HAZARDS (AS FOUND ON NORTHERN POWERGRID - JOB REF SD867239)
 132kV OVERHEAD ELECTRIC CABLE - LIVE
 33kV OVERHEAD ELECTRIC CONDUCTORS
 UNDERGROUND HIGH VOLTAGE CABLES

At the location of installation or removal of a column or other street furniture:
All measurements shall be made along the ground. Blue highlighted route denotes decision path.



- Notes**
- THIS IS AN AUTOCAD DRAWING AND SHOULD NOT BE AMENDED BY HAND.
 - THE EXISTING LOCATIONS ARE APPROXIMATE AND THEIR ACCURACY CANNOT BE GUARANTEED.
 - ALL DIMENSIONS IN METRES UNLESS OTHERWISE STATED.
 - DRAWING TO BE READ IN CONJUNCTION WITH OTHER CONTRACT DOCUMENTS.
 - 4.1 4.1 2475-DFL-HLG-XX-CA-EO-13001 [LIGHTING CALCULATION]
4.2 2475-DFL-HLG-XX-RP-EO-13001 [DESIGN SUMMARY REPORT]
4.3 2475-DFL-HLG-XX-RA-EO-13001 [RISK ASSESSMENT]
4.4 2475-DFL-HEL-XX-DR-EO-05001to05004 [DUCTING LAYOUT]
4.5 2475-DFL-HEL-XX-SC-EO-14001to14004 [ELECTRICAL SCHEMATICS]
4.6 2475-DFL-HLG-XX-DR-EO-13001to13005
 - THIS DRAWING MUST NOT BE SCALED.
 - COLUMN LOCATIONS TO BE CHECKED AGAINST UTILITY DRAWINGS FOR CONFLICTS BY A COMPETENT ENGINEER.
 - CONTRACTOR SHOULD SATISFY THEMSELVES THAT ANY UTILITY DRAWINGS AFFECTING THE SCHEME ARE ACCURATE AND UP TO DATE PRIOR TO COMMENCEMENT.
 - ALL LIGHTING INSTALLATIONS AND EQUIPMENT TO BE TO KIRKLEES COUNCIL ADOPTABLE STANDARDS. REFERENCE SHOULD BE MADE TO KIRKLEES COUNCIL LIST OF APPROVED APPARATUS.
 - COLUMNS ARE TO BE POSITIONED AT THE BACK OF THE VERGE/FOOTWAY UNLESS SPECIFIED ON THE DRAWING. NO CLOSER THAN 1000MM FROM THE KERB LINE TO THE FACE OF THE COLUMN.
 - IF COLUMNS CANNOT BE INSTALLED AS SET OUT IN THIS DRAWING, THEN THE DESIGNER WILL HAVE TO BE CONSULTED FOR NEW COLUMN POSITIONS.
 - COLUMN NUMBERING SHOWN IS FOR REFERENCE PURPOSES ONLY. FINAL NUMBERING SHOULD BE AGREED WITH KIRKLEES COUNCIL BEFORE CONSTRUCTION.
 - ALL WORKS SHOULD BE CARRIED OUT BY SUITABLY QUALIFIED AND COMPETENT PERSONS IN ACCORDANCE WITH BUT NOT LIMITED TO, G39 'WORKING IN THE VICINITY OF DNO EQUIPMENT', 'WORKING AT HEIGHT REGULATIONS', 'ELECTRICITY AT WORK REGULATIONS', 'SAFE DIGGING PRACTICES HSG47 'AVOIDING DANGER FROM UNDERGROUND SERVICES' AND 'CODE OF PRACTICE FOR ELECTRICAL SAFETY AND HIGHWAY ELECTRICAL OPERATIONS.
 - COLUMNS IN THE VICINITY OR PROXIMITY ZONES NEARBY HIGH VOLTAGE OVERHEAD LINES (HV OHL) SHALL BE INSTALLED IN ACCORDANCE WITH ILP GP10 - SAFETY DURING THE INSTALLATION AND REMOVAL OF LIGHTING COLUMNS AND SIMILAR STREET FURNITURE IN PROXIMITY TO HIGH VOLTAGE OVERHEAD LINES, AS WELL AS G39 AS PER NOTE 14.
 - A WARNING LABEL HIGHLIGHTING THE PRESENCE OF NEARBY OVERHEAD ELECTRIC POWER LINES SHOULD BE ATTACHED TO COLUMNS IN THE VICINITY OR PROXIMITY ZONES.
 - COLUMNS SHALL BE INSTALLED WHEREVER PRACTICABLE SO THAT A MAINTENANCE OPERATIVE WORKING ON EQUIPMENT IN THE BASE COMPARTMENT OF THE COLUMN WILL FACE ONCOMING TRAFFIC.
 - IF STREET LIGHTING COLUMNS REQUIRE SIGNS TO BE ATTACHED, THIS SHOULD BE CONFIRMED WITH THE MANUFACTURER AT TIME OF ORDER TO ENSURE THAT THE COLUMN CAN TAKE THE ADDITIONAL WEIGHT AND WINDAGE IN ACCORDANCE WITH PD 6547:2004+A1:2009.
 - CONTROL: ALL LANTERNS TO BE FACTORY FITTED WITH EXTERNAL CMS NODE IN ACCORDANCE WITH KIRKLEES COUNCIL SPECIFICATION.
 - COLUMNS WHICH REQUIRE TREE PRUNING HAVE BEEN HIGHLIGHTED WITHIN THE DRAWING.
 - HINGED RAISE AND LOWER COLUMNS SHALL BE INSTALLED SUCH THAT WHEN OPERATED, THEY DO NOT CAUSE OBSTRUCTION OR SNAG ON SURROUNDING OBJECTS.

DFL
LIGHTING DESIGN • ELECTRICAL • SMART CITIES • ENERGY REDUCTION • LIGHTING IMPACT

DFL-UK (Designs for Lighting Ltd)
17/18 City Business Centre
Winchester, Hampshire, SO23 7TA
Tel: 01962 855080
Email: info@df-uk.com

sustrans

SPEN VALLEY - GREENWAY

LIGHTING LAYOUT

DESIGNED	CAD	CHECKED	APPROVED
GK	SW	AE	AL
DATE DESIGNED	SHEET	SCALE	SHEET SIZE
AUG 2023	3 of 5	1:500	A1
DRAWING NUMBER	PROJECT	VOLUME	LOCATION
2475-DFL-HLG-XX-DR-EO-13003	SPEN VALLEY - GREENWAY	3	1000m
JOB NUMBER	STATUS	REVISION	
2475	S3	P02	

IMPORTANT
SAFETY, HEALTH & ENVIRONMENTAL INFORMATION

TO BE READ IN CONJUNCTION WITH HAZARD REGISTER DOC. REF: 2475-DFL-HLG-XX-RA-EO-13001

HAZARD REF	BRIEF DESCRIPTION OF HAZARD-
HAZ1	Overhead high voltage electricity cables (O/H HV)
HAZ2	Underground high voltage electricity cables
HAZ17.2	Topography - severe sloping ground
HAZ17.3	Topography - bridges
HAZ25	Trees

PRELIMINARY DESIGN.
LOCATIONS TO BE CHECKED AGAINST STATS PRIOR TO INSTALLATION.

STATUS	REV	AMENDMENT DESCRIPTION	DATE	CAD	CHKD	APPD
S3	P02	SPEC OF 59 X COLUMNS CHANGED (FROM RAISE AND LOWER TO STANDARD) - COLUMNS REMOVED (LC69, LC67, LC61, LC60, LC59, LC58, LC41 AND LC40) - FEEDER PILLAR FP04 MOVED	18.10.2023	SW	AE	AL
S3	P01	FIRST ISSUE	31.08.2023	SW	AE	AL

DFL-CAD-FILE-C:\Users\Gardner\Documents\2475-DFL-HLG-XX-DR-EO-13003to13005.dwg