

DISCHARGE OF CONDITION  
APPLICATION  
FOR

SPEEDWELL SURGERY  
1 SPEEDWELL STREET  
PADDOCK  
HUDDERSFIELD  
HD1 4TS

ON BEHALF OF  
PADDOCK AND LONGWOOD  
FAMILY PRACTICE

TRAFFIC MANAGEMENT PLAN  
DATED: OCTOBER 2024

SUBMITTED BY NORTHERN DESIGN PARTNERSHIP  
THE CHAPEL, MILLMOOR ROAD  
MELTHAM, HOLMFIRTH HD9 5JU

TEL: 01484 854848  
EMAIL: [paul.briggs@northerndesignpartnership.co.uk](mailto:paul.briggs@northerndesignpartnership.co.uk)

## **1.00 – PLANNING HISTORY**

1.01 – Planning Permission was granted in 2022 (2020/94364) for the ‘Erection of Extension to Form Two New Floors and Associated Works’ to the original surgery.

1.02 – The Approval contained one pre-commencement condition;

*6. Prior to construction commencing, a schedule of the means of access to the site for construction traffic shall be submitted to and approved in writing by the Local Planning Authority. The schedule shall include the point of access for construction traffic, details of the times of use of the access, the numbers and size of vehicles expected to access the site, the routing of construction traffic to and from the site, construction workers and delivery parking facilities, the location of materials storage and site facilities, the use of traffic management/banksman for large deliveries and the provision, use and retention of adequate wheel washing facilities within the site and the means of removal of mud and debris from the highway/footway. Unless otherwise approved in writing by the Local Planning Authority, all construction arrangements shall be carried out in accordance with the approved schedule throughout the period of construction.*

## **2.00 – PROPOSALS**

2.01 – Since the aforementioned approval the applicants have acquired a large area of land to the South of the site. This area is highlighted in blue, with the application site outlined in red on Image 1.

2.02 – The area of land edge in blue will be utilised as a site compound which will accommodate parking, site cabins and ancillary temporary buildings, and areas for plant and material storage.

2.03 – The site entrance will be located off Brow Road, see Image 2. A site entrance will be formed as shown on the plan.

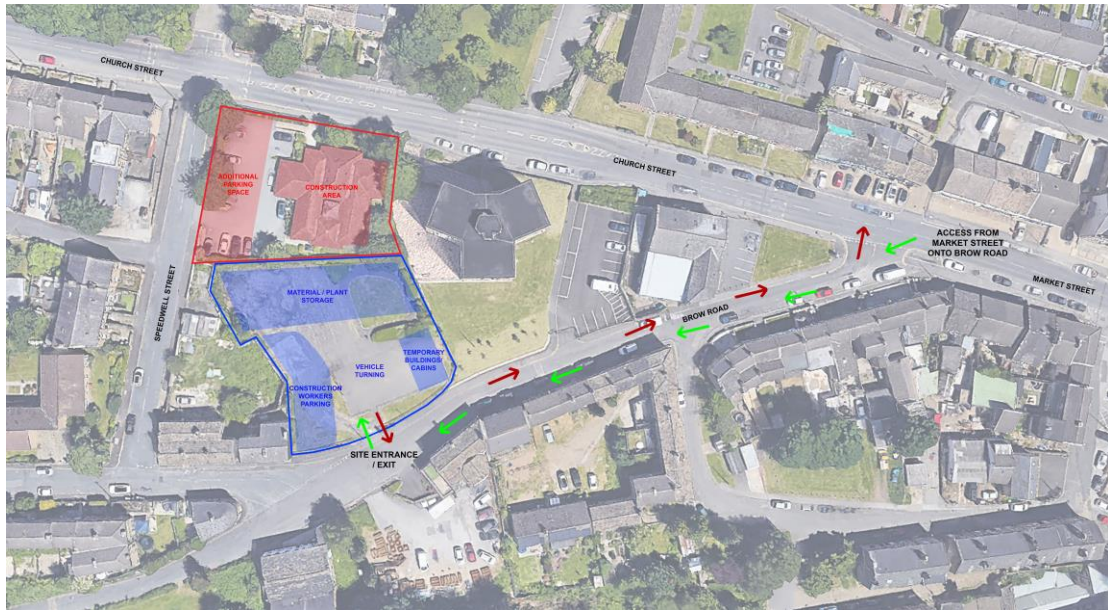


Image 1 – Plan with Access and Site Set Up Indicated



Image 2 – Location of Site Entrance For Site Accommodation, Material Storage and Parking

2.04 – The use of this area of land will ensure that there will be no construction traffic manoeuvring onto Church Street, the principle road to and from Paddock. The road arrangement adjacent to the entrance is of sufficient width to enable delivery vehicles to sweep into the site. Standard vehicles will be able to turn around within the site. Larger vehicles will pull into the site, unload and then reverse with the aid of a banksman.

2.05 – In terms of deliveries, it is considered that the majority will be 7.5 to 17 tonne (6.0m and 7.8m long) trucks. The larger deliveries will be via 24 tonne (13.6m long) low loader lorries. These will only occasionally visit the site for larger elements such as steelwork.

2.06 – In terms of construction workers parking, this will be located adjacent to the entrance and close to the site cabins. The existing car park will also be utilised as an overflow car park for.

2.07 – The site cabins will be located in a position adjacent to the entrance. This location is also a good distance from the local houses, to reduce the noise element.

2.08 – In terms of delivery times, these will be restricted to the times / days set out in the planning approval;

07.30 to 18.00 Hours – Mondays to Fridays

08.00 to 13.00 Hours – Saturdays

No deliveries on Sundays or Bank Holidays.

2.09 – A water supply will be located adjacent to the site entrance / exit. The main vehicle area will be hard surfaced to minimise mud / debris migrating to the highway. If excessive mud / debris does reach the highway, the contractor will be contracted to hire a road cleaner.

### **3.00 – CONCLUSION**

3.01 – The proposals are designed to minimise disruption to neighbouring properties and local road users. The proposals will allow the site to run efficiently and safely. We therefore trust that Kirklees MC can support the proposals.