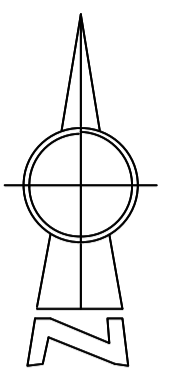
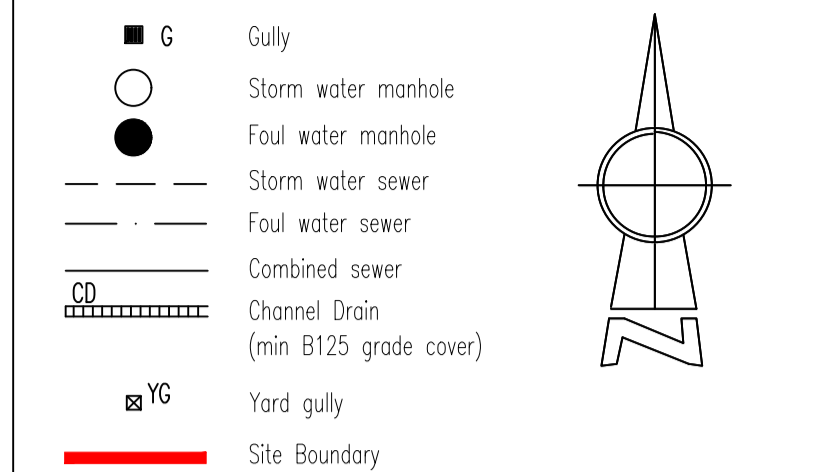
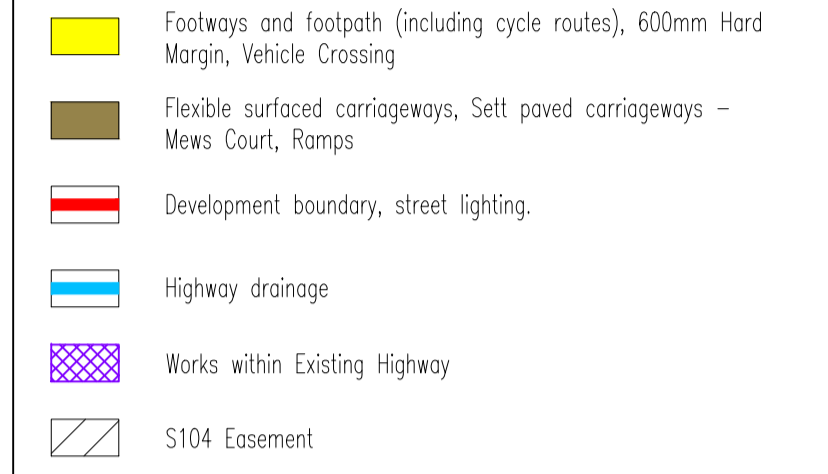


KEY



COLOUR KEY

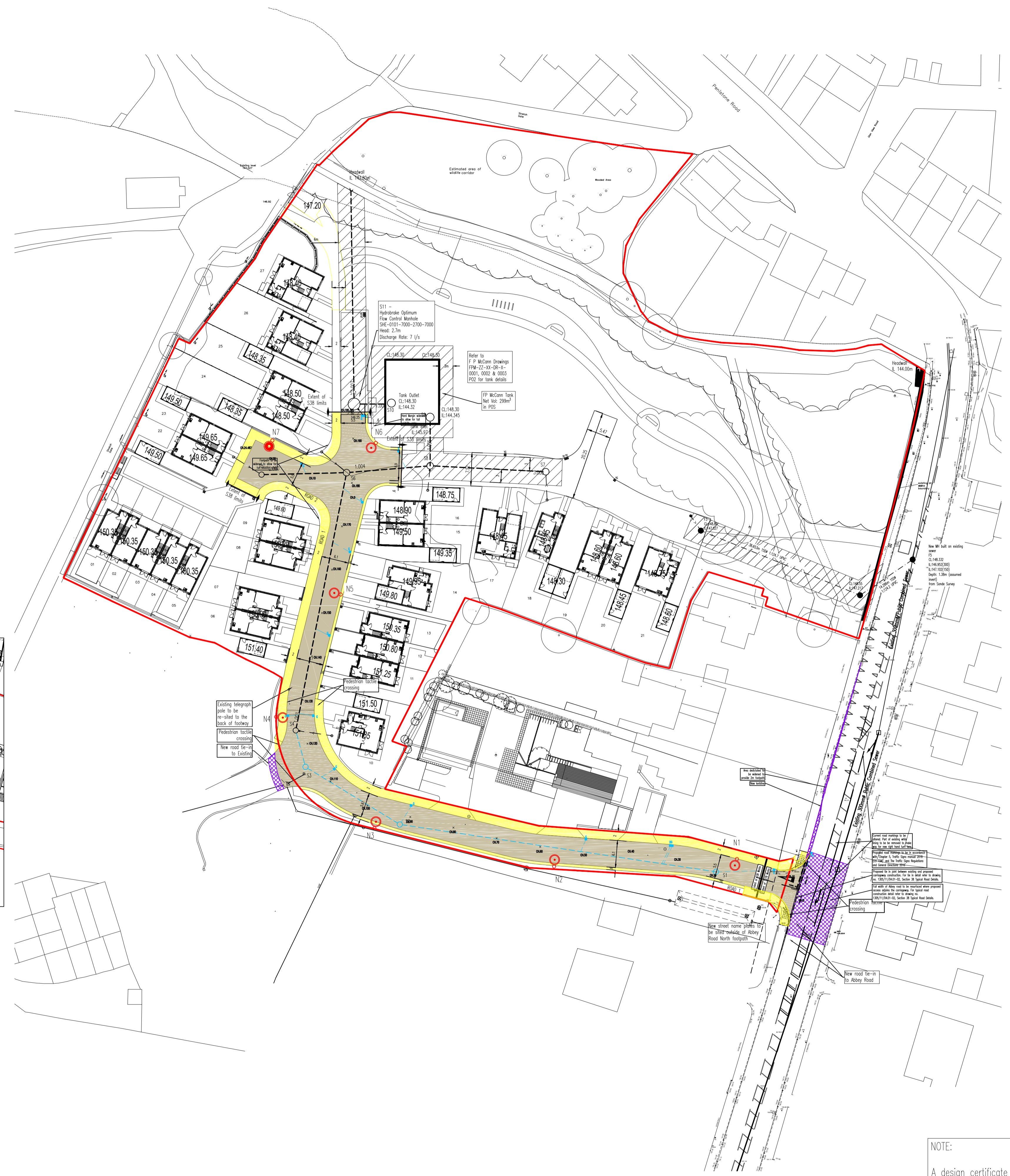


1. Refer to typical section Drawing No 1305/11/04 for typical highway details.
2. Dropped kerbs and tactile pavings are required at the junctions to facilitate the movement of wheelchairs etc. The dropped kerbs to be laid with a 10mm upstand.
3. Adaptable sewers are not to be constructed under or within 1.0 metres of any footpath/ kerb line / service strip.
4. Off-site drainage already built must have invert levels checked prior to connection of the site drainage.
5. Gully positions shown are subject to adjustment on site to ensure full drainage and the absence of ponding.
6. No walls are to be constructed 1m of the highway drains located in gardens or verge.
7. No water should be allowed to discharge from any private drives onto the adaptable highway.
8. All highway works are to be the subject of a Section 38 Agreement of the highways Act 1980.
9. All public sewers to comply with the requirements of the Water Authorities publication "Sewers for Adoption 6th Edition" together with any additional specific requirements of the drainage authority.
10. All public sewers are to be the subject of a Section 104 Agreement of the Water Industry Act 1991.
11. Any coated base material in carriageway left exposed for more than seven days to be sealed using bituminous sealing grit.
12. Highway boundary to be indicated by back edgings laid flush or change of material on Private drives.
13. All vertical faces of joints involving flexible materials shall be treated with "Oxy-bit" or other approved joint sealant. This includes ironwork, and precast products. Overbanding will not be accepted with Kirklees Council.
14. Do not scale from this drawing

SUBJECT TO THE APPROVAL OF ALL RELEVANT AUTHORITIES

Rev	By	Date	Revision	Chk	Apvd
N	JMG	25.02.22	Updated to Kirklees Council comments	MI	MI
M	MI	20.12.21	Updated to suit revised road layout rec 15.12.21	RJ	MI
L	JMG	20.10.21	Layout revised, Road 1 amendments	MI	MI
K	BHB	12.10.21	Revised to Construction Issue	RJ	MI
J	JMG	07.10.21	Updated to KCC comments, colours amended	MI	ARP
I	MI	13.07.21	Street Lighting added	ARP	ARP
H	MI	07.06.21	Retaining wall note removed	ARP	ARP
G	MI	20.05.21	Note added for manhole cover slabs	ARP	ARP
F	RJ	26.04.21	Section 38 notes revised	ARP	ARP
E	RF	08.3.21	FP McCann Tank confirmed for SW storage		
D	JMG	15.07.20	Drainage design revised, Tank added	ARP	ARP
C	RF	05.6.20	Drainage revised to remove 1500mm pipes		
B	DP	12.05.20	Revised site layout added		ARP
A	RB	27.09.19	Site layout revised to revision H		ARP
/	B/JC	10.04.19	Issued for approval		TC

TITLE	
SECTION 38 LAYOUT	
PROJECT	
ABBEY ROAD NORTH, SHEPLEY	
CLIENT	
CAMSTEAD	
DRAWING STATUS	
FOR CONSTRUCTION	
Scale	Date
1:500 @ A1	APR 19
Drawn	Chk.
DJG	TC
Rev. No.	Rev.
1305/11/02.01	N



Forward Visibility

- Street Lighting Key
- Proposed 6 metre Steel column with Spigot Mounted Orangetek IGNS Mini 20 MPH 4.0\_70\_203\_2168\_2 LED6 (13w) 2.17km lantern
  - Proposed 6 metre Steel column with spigot mounted Orangetek IGNS mini 20 MPH 4.0\_70\_437\_4426 LED7 (27w) 4.43km lantern

NOTE:  
Lighting column erections should only be called off once the adaptable back edge (pin kerb) has been installed on site and there are levels to work to.  
The footway wearing course should not be laid until the lighting column/s have been erected and serviced.

NOTE:  
A design certificate along with confirmation from the manufacturer that the manhole cover slabs have been designed in accordance with BS EN 1917 and BS 5911-3 + A1 will be submitted when the civils contractor has been appointed and prior to commencement of drainage works