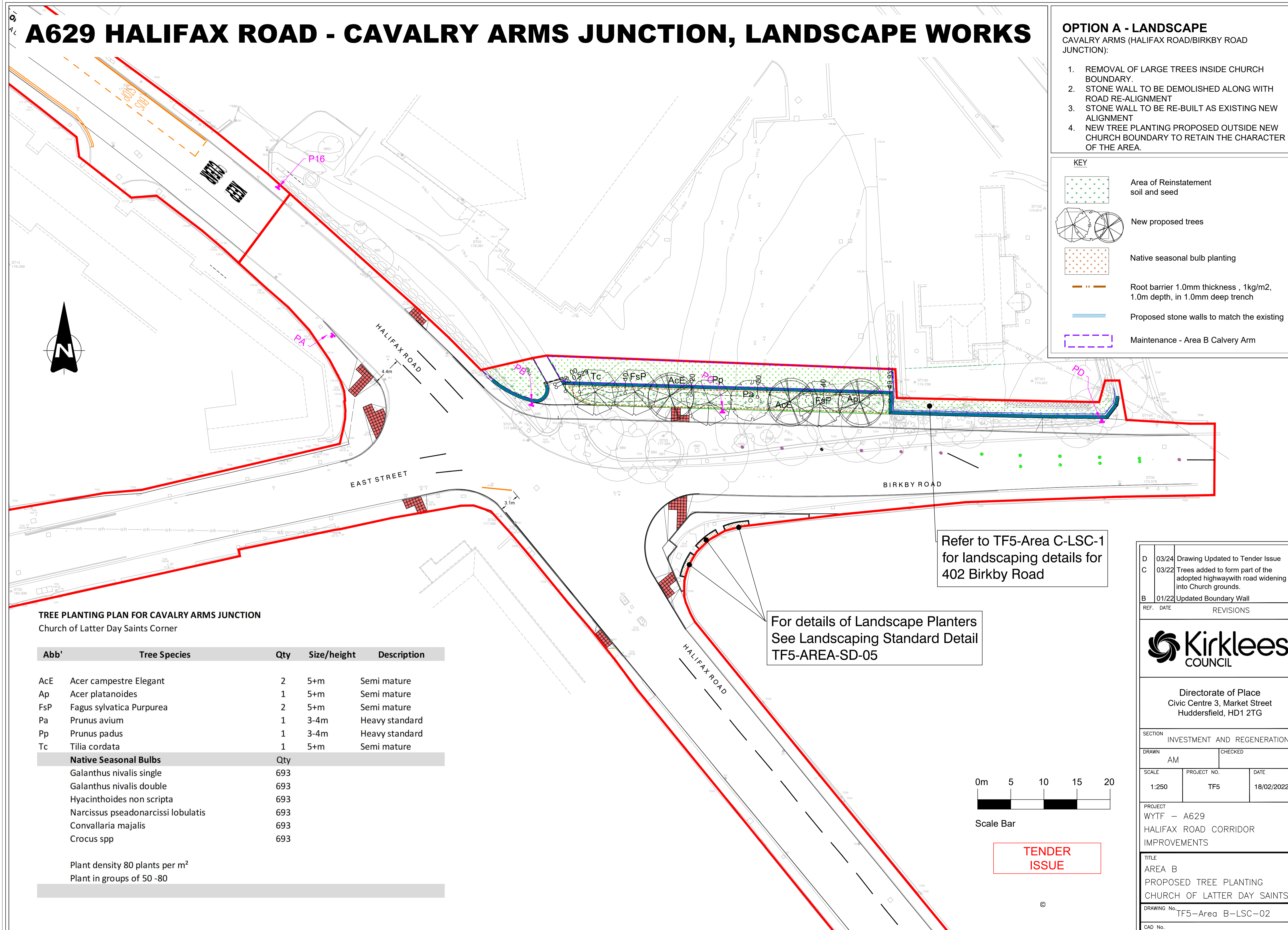


A629 HALIFAX ROAD - CAVALRY ARMS JUNCTION, LANDSCAPE WORKS

- OPTION A - LANDSCAPE**
CAVALRY ARMS (HALIFAX ROAD/BIRKBY ROAD JUNCTION):
1. REMOVAL OF LARGE TREES INSIDE CHURCH BOUNDARY.
 2. STONE WALL TO BE DEMOLISHED ALONG WITH ROAD RE-ALIGNMENT
 3. STONE WALL TO BE RE-BUILT AS EXISTING NEW ALIGNMENT
 4. NEW TREE PLANTING PROPOSED OUTSIDE NEW CHURCH BOUNDARY TO RETAIN THE CHARACTER OF THE AREA.

KEY

- Area of Reinstatement soil and seed
- New proposed trees
- Native seasonal bulb planting
- Root barrier 1.0mm thickness, 1kg/m2, 1.0m depth, in 1.0mm deep trench
- Proposed stone walls to match the existing
- Maintenance - Area B Calvery Arm

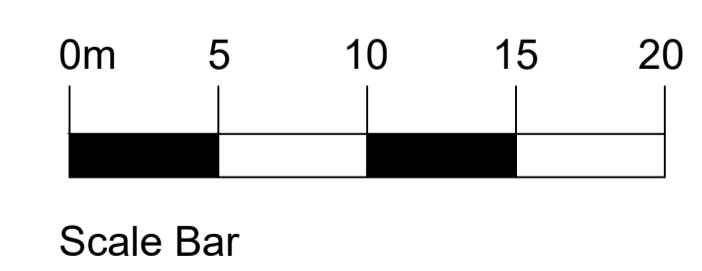


Refer to TF5-Area C-LSC-1 for landscaping details for 402 Birkby Road

For details of Landscape Planters See Landscaping Standard Detail TF5-AREA-SD-05

TREE PLANTING PLAN FOR CAVALRY ARMS JUNCTION
Church of Latter Day Saints Corner

Abb'	Tree Species	Qty	Size/height	Description
AcE	Acer campestre Elegant	2	5+m	Semi mature
Ap	Acer platanoides	1	5+m	Semi mature
FsP	Fagus sylvatica Purpurea	2	5+m	Semi mature
Pa	Prunus avium	1	3-4m	Heavy standard
Pp	Prunus padus	1	3-4m	Heavy standard
Tc	Tilia cordata	1	5+m	Semi mature
Native Seasonal Bulbs		Qty		
	Galanthus nivalis single	693		
	Galanthus nivalis double	693		
	Hyacinthoides non scripta	693		
	Narcissus pseadonarcissi lobulatis	693		
	Convallaria majalis	693		
	Crocus spp	693		
Plant density 80 plants per m ²				
Plant in groups of 50 -80				



TENDER ISSUE

REF.	DATE	REVISIONS
D	03/24	Drawing Updated to Tender Issue
C	03/22	Trees added to form part of the adopted highway with road widening into Church grounds.
B	01/22	Updated Boundary Wall
Kirklees COUNCIL		
Directorate of Place Civic Centre 3, Market Street Huddersfield, HD1 2TG		
SECTION INVESTMENT AND REGENERATION		
DRAWN	CHECKED	
AM		
SCALE	PROJECT NO.	DATE
1:250	TF5	18/02/2022
PROJECT WYTF - A629 HALIFAX ROAD CORRIDOR IMPROVEMENTS		
TITLE AREA B PROPOSED TREE PLANTING CHURCH OF LATTER DAY SAINTS		
DRAWING No. TF5-Area B-LSC-02		
CAD No.		