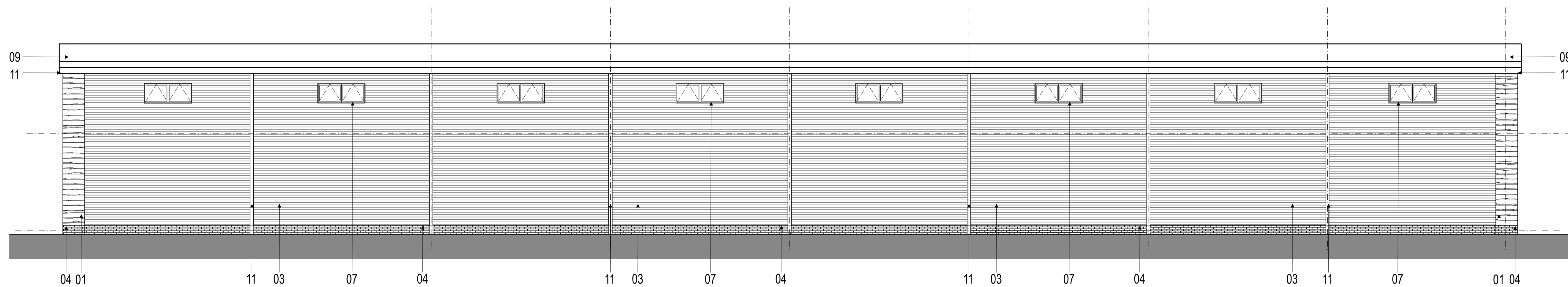


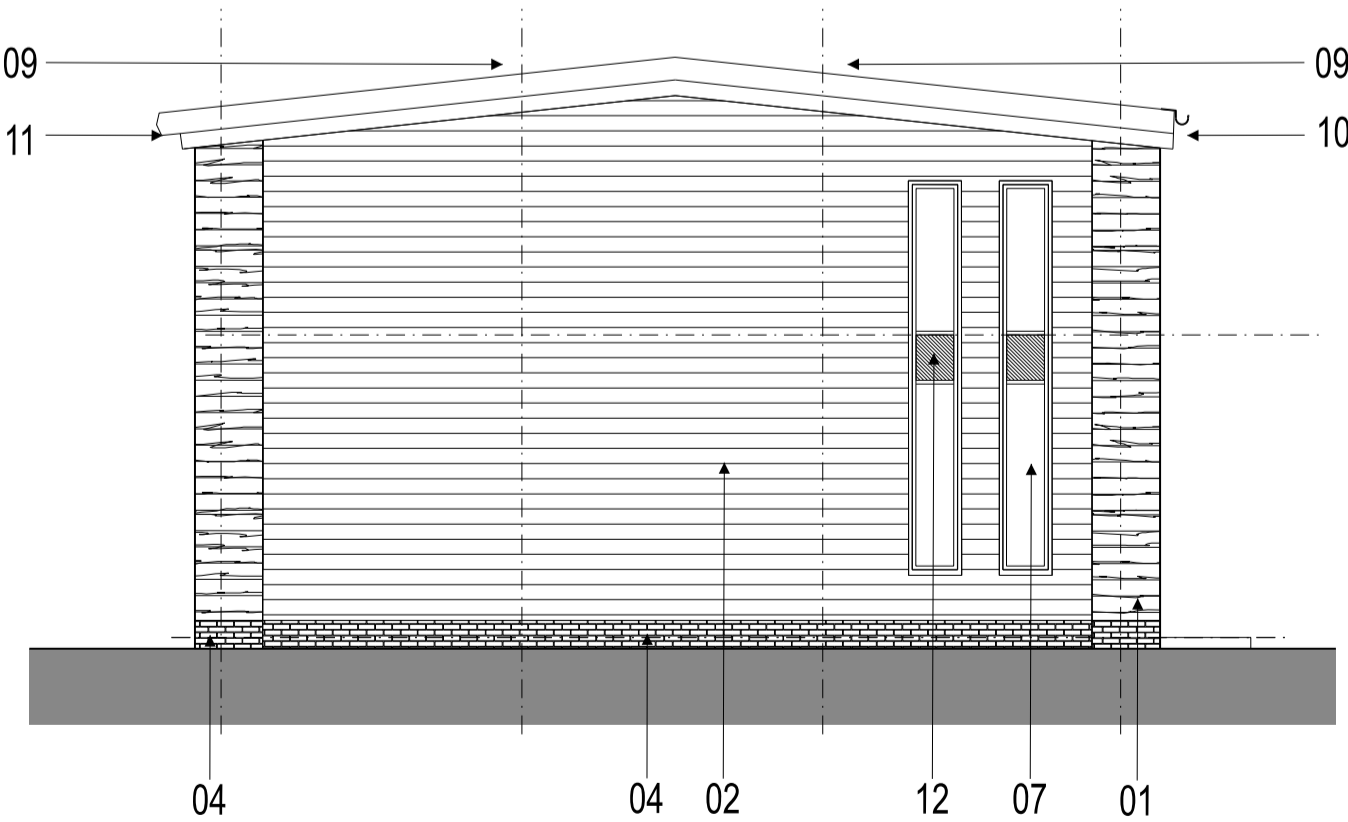
Notes:
 This drawing is the sole copyright of KPP Architects Ltd and reproduction in any form is forbidden unless permission is obtained in writing.
 Do not scale from this drawing. Any discrepancies on site should be brought to the attention of KPP Architects Ltd.
 Work and materials must comply with the current building regulations and codes of practice and be read in conjunction with building specifications and other sub-contractors information. All materials are to be installed in strict accordance with the recommendations of the manufacturers.



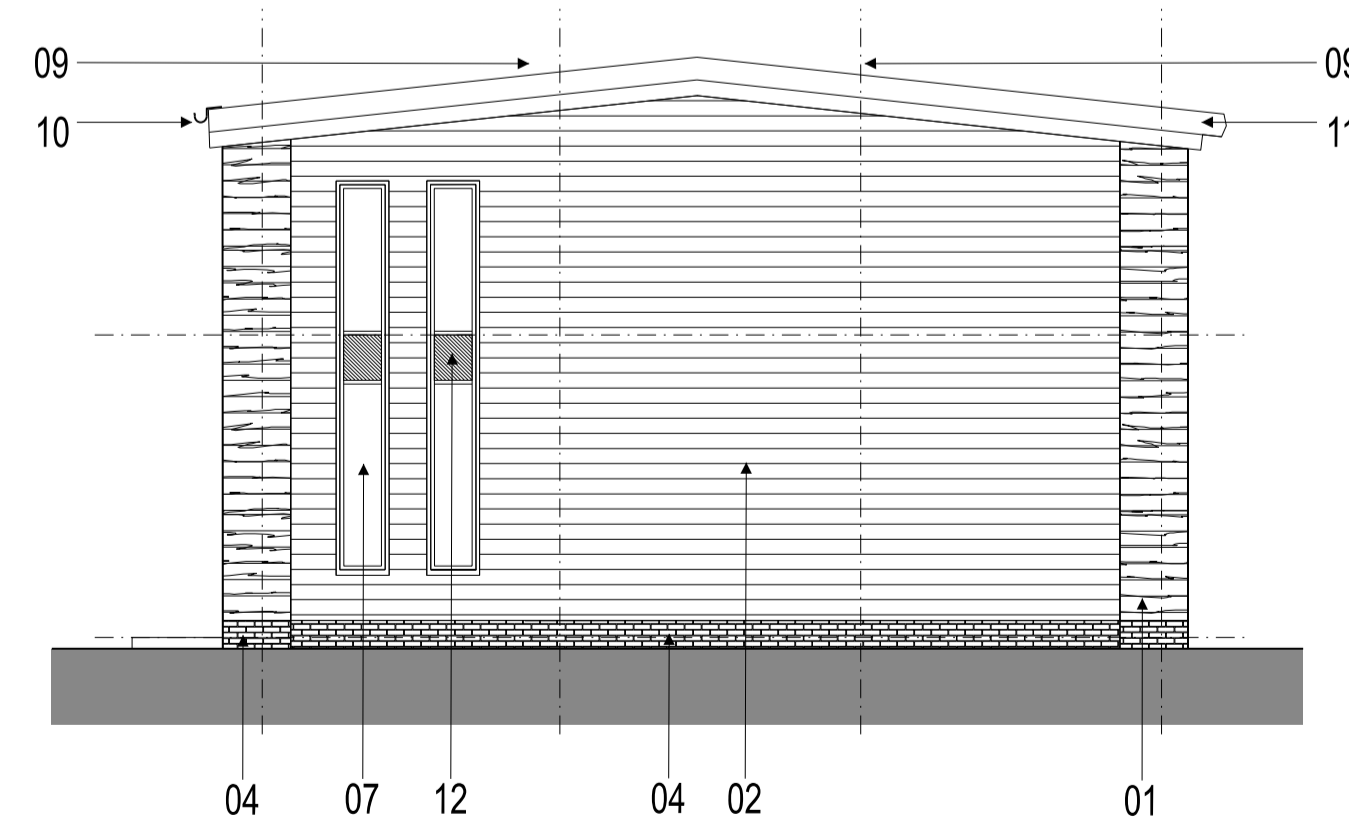
FRONT ELEVATION



REAR ELEVATION



SIDE ELEVATION



SIDE ELEVATION

- 01-NATURAL STONE
- 02-CEDRAL LAP WOOD FIBRE CEMENT BOARD CLADDING. COLOUR ANTHRACITE GREY RAL 7016
- 03-BUILT UP C32 HORIZONTAL CLADDING. COLOUR ANTHRACITE GREY RAL 7016
- 04-LOW LEVEL BLUE ENGINEERING BRICK PLINTH
- 05-PPC ALUMINIUM FLASHING. COLOUR ANTHRACITE GREY RAL 7016
- 06-ALUMINIUM FRAME POWDER COATED GLASS DOOR. COLOUR ANTHRACITE GREY RAL 7016
- 07-ALUMINIUM FRAME POWDER COATED WINDOWS. COLOUR ANTHRACITE GREY RAL 7016
- 08-PLASTISOL COATED SECTION OVERHEAD DOOR. COLOUR ANTHRACITE GREY RAL 7016
- 09-BUILT UP ROOF CLADDING. COLOUR GOOSEWING GREY RAL 7038
- 10-UNTREATED ALUMINIUM HALF ROUND GUTTER AND DOWNPIPES
- 11-TRIMLINE GUTTER AND POWDER COATED DOWNPIPES. COLOUR ANTHRACITE GREY RAL 7016
- 12-OBSCURE GLAZING. COLOUR BLACK

Rev	Description	By	Chkd	Date

Client
FRANK MARSHALL ESTATES

Project Title
WAPPY SPRINGS

Drawing Title
UNITS 1 - 4 ELEVATIONS

KPP ARCHITECTS
 Lodge House
 12 Town Street
 Horsforth, Leeds LS184RJ
 T : +44 (0) 113 2390460
 E : architects@kpp-leeds.co.uk
 W : www.kpp-leeds.co.uk

Scale	Size	Date	Drawn	Checked
1:100	A1	AUG'24	MH	-

Status
PLANNING

KPP Job No 2278	Rev -
Number 2016	