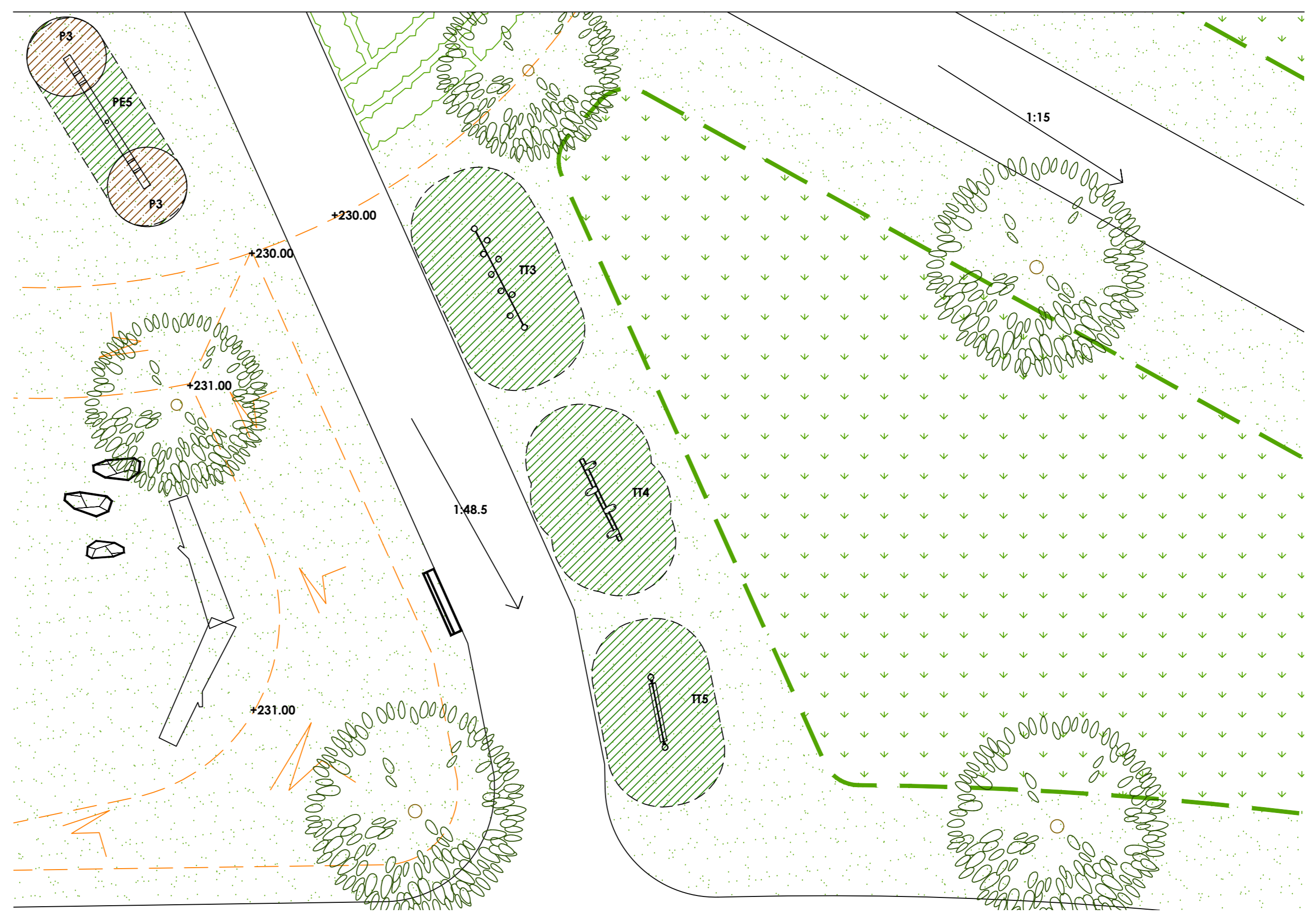




LEAP Proposals



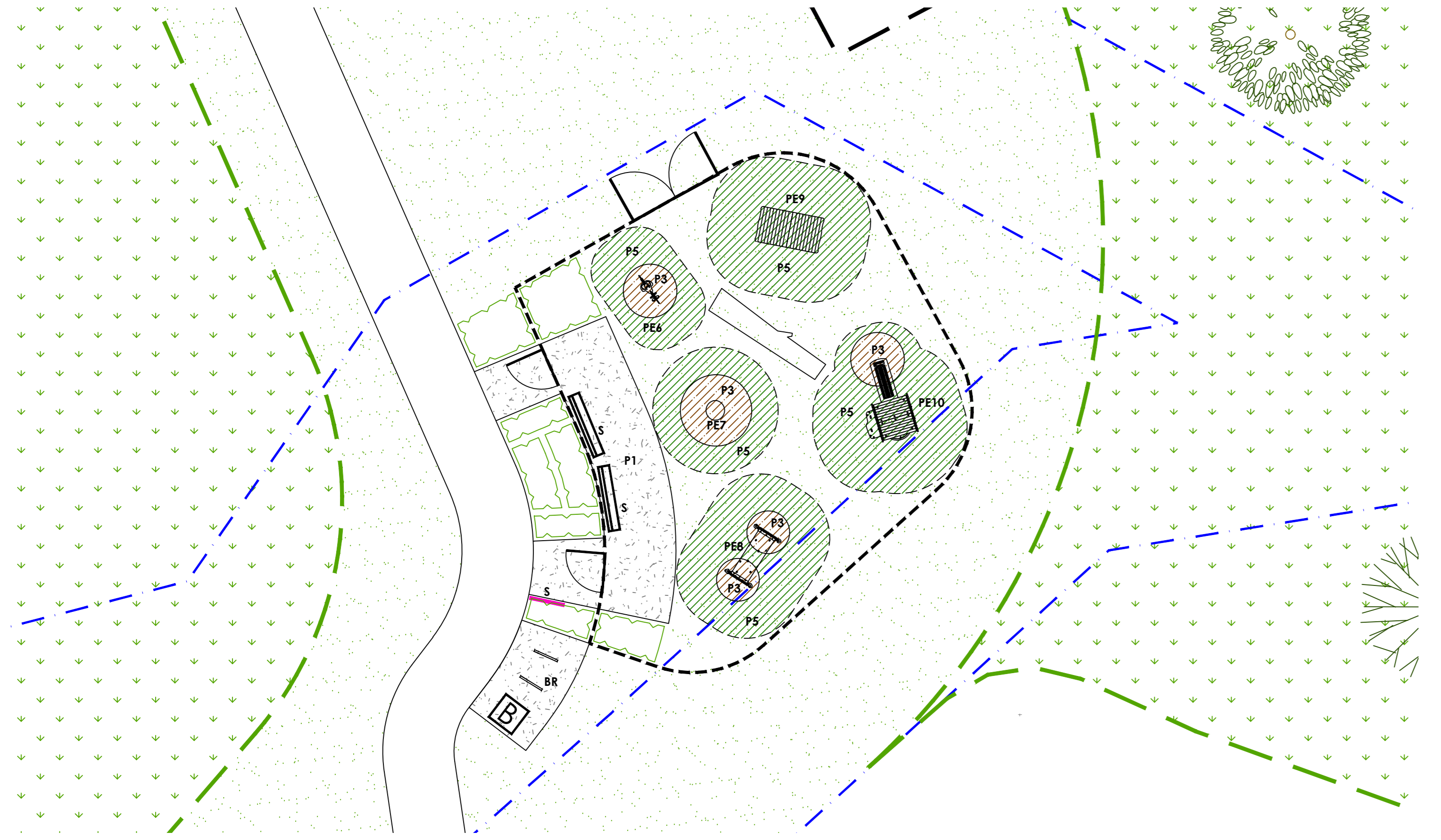
Trim Trail Proposals (TT1 - TT2)



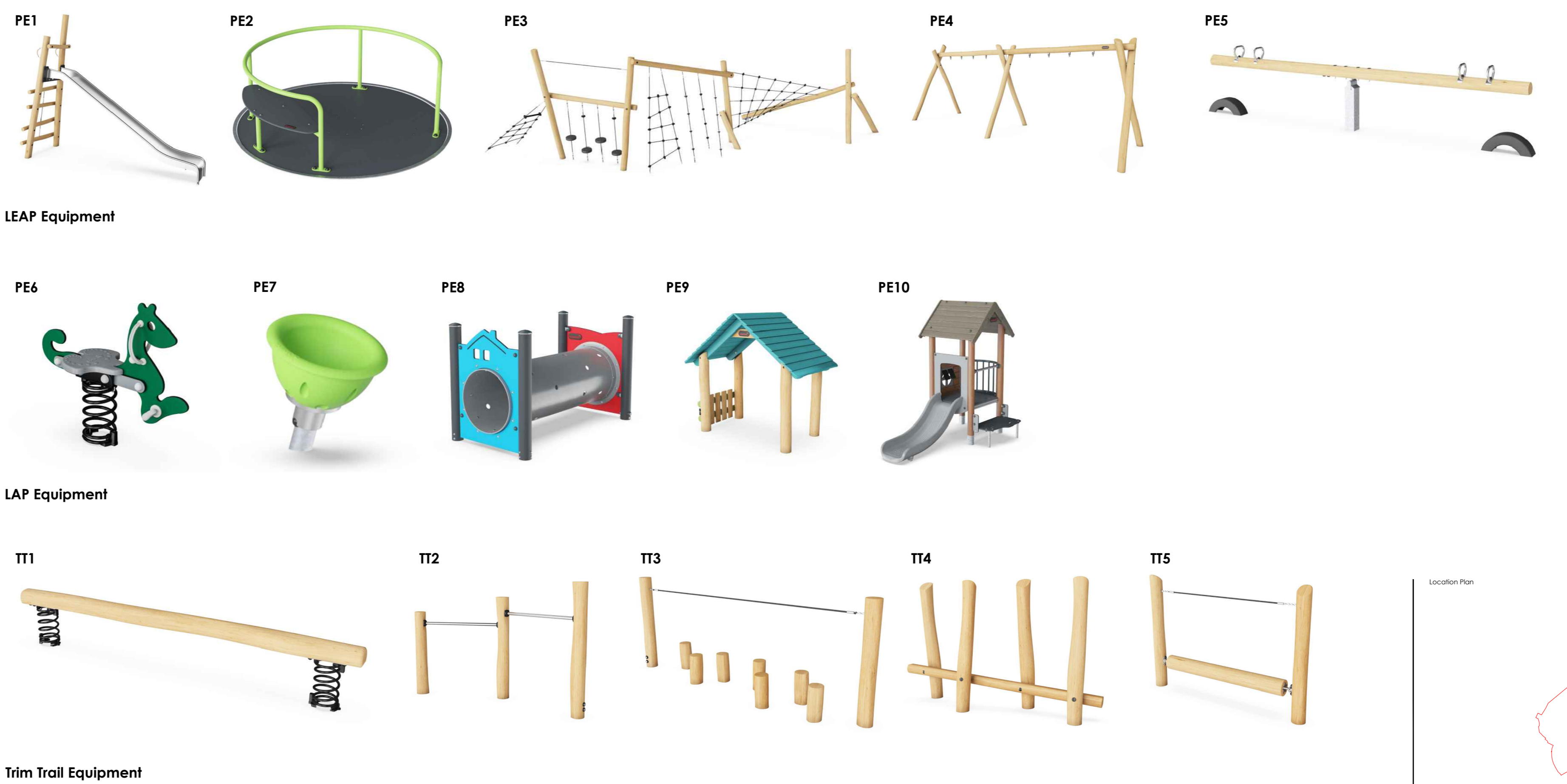
Trim Trail Proposals (TT3 - TT5)

Key	
	Proposed ground modelling/contours and spot heights.
	<b>Amenity Planting</b> Amenity shrub planting. Refer to GLY0043 LP 01-13 for specification.
	<b>Surface Treatments</b>
	<b>Tarmac Paving</b> Tarmac path with standard pcc edge. (Colour: Black). Associated construction build ups to the Project Engineers specification.
	<b>Block Paving</b> Manitex Tegula (Colour: traditional) in 120x140, 140x140 & 240x140mm sizes. Laid in a radial pattern to match the arc of the paths shown. Paver thickness and associated construction build ups to the Project Engineers specification.
	<b>Jungle Mutch</b> Wet pour rubber JungleMutch Surfacing (Colour: Rustic) as supplied by Playmatr UK (www.playmatr.co.uk) or similar approved. Thickness and associated build ups to supplier specification.
	<b>Rubbitmat</b> Wet pour rubber EPDM Rubbitmat Surfacing (Colour: Brown to match brown colour within jungle mutch) as supplied by Playmatr UK (www.playmatr.co.uk) or similar approved. 1m offset from the concrete edge. Thickness and associated build ups to supplier specification.
	<b>Grass Safety Surfacing</b> Indicative extent of grass safety matting. To play manufacturers specification.
	<b>Street Furniture</b>
	<b>Seat</b> Covertly Steel Framed Timber Seat with back & armrests (ref: BX14 4200.5), as supplied by Broap (www.broap.com), or similar approved. Supplied with FSC Hardwood timber & painted steelwork (Colour: Holly green - BS4800 14 C 39).
	<b>Bench</b> Covertly Steel Framed Timber Bench (ref: BX14 4200.8), as supplied by Broap (www.broap.com), or similar approved. Supplied with FSC Hardwood timber & painted steelwork (Colour: Holly green - BS4800 14 C 39).
	<b>Picnic Bench</b> Covertly Steel Framed Timber Picnic Unit (ref: BX14 4200.1), as supplied by Broap (www.broap.com), or similar approved. Supplied with FSC Hardwood timber & painted steelwork (Colour: Holly green - BS4800 14 C 39).
	<b>Picnic Bench - Accessible</b> Covertly Steel Framed Timber Picnic Unit with bench to one side only to allow for wheelchair accessibility (ref: BX14 4200.2), as supplied by Broap (www.broap.com), or similar approved. Supplied with FSC Hardwood timber & painted steelwork (Colour: Holly green - BS4800 14 C 39).
	<b>Litter Bin</b> Dixy Standard Litter Bin 120L (ref: BX45G 2550), as supplied by Broap (www.broap.com), or similar approved. Bin to be labelled as accepting both refuse and dog waste.
	<b>Bike Rack</b> Shelford Cycle Stands (ref: BMXW/GS/Sheffield Stand), as supplied by Broap (www.broap.com), or similar approved. Set on an asphalt surround with standard pcc pin kerb edge.
<b>Notes:</b> All furniture to be roof fixed to supplier specification.	
<b>Boundary Treatments</b>	
	<b>Bow-top Railings</b> 1.0m high. (Colour: Green - RAL 6005).
	<b>Pedestrian Gate</b> 1.0m high x 1.1m wide bow-top self-closing gate, anti-trap to BS EN 1176. (Colour: Yellow - RAL 1023).
	<b>Maintenance Gate</b> 1.0m high x 1.2m wide bow-top double-leaf maintenance gate (Colour: Yellow - RAL 1023) anti-trap to BS EN 1176.
<b>Natural Play elements</b>	
	<b>Play Log</b> 3.0m long with nom. 0.5-0.6m dia. Logs set of variable heights (max. 0.6m high off adjacent ground). All bark removed and treated with rounded edges free of burrs or catches.
	<b>Play Boulder</b> nom. 0.4 - 1.0m dia. boulders set of variable heights (max. 0.6m high off adjacent ground). Boulders to have rounded edges free of sharp corners, edges or catches.
<b>Play Equipment</b>	
	<b>PE1</b> Single Slide - 1.8m High Ref: NRO302
	<b>PE2</b> Wheelchair Carousel Ref: FCAL157 Colour: Lime
	<b>PE3</b> Agility Trail 9 Ref: NRO354
	<b>PE4</b> Swing Frame - 4 Seats Ref: NRO294 Including 1no. Accessible Seat, 1no. Cradle Seat & 2no. standard Seats.
	<b>PE5</b> Seesaw - 4 Persons Ref: NRO10601
	<b>PE6</b> Kangaroo Ref: KPL 103 Colour: Green
	<b>PE7</b> Spinner Bowl Ref: EL000024 Colour: Sand
	<b>PE8</b> Feekaboo Tunnel Ref: FCAL00791 Colour: Green
	<b>PE9</b> Playhut with Side Ref: NRO2410 Colour: Robbia Turquoise
	<b>PE10</b> Play Tower Ref: FCAL101021 Colour: Pine Wood
<b>Play Space Sign</b> Indicative location of signage. Design and signage content to be confirmed by play supplier.	
<b>Trim Trail Equipment</b>	
	<b>TT1</b> Balance Beam on Spring Ref: NRO307
	<b>TT2</b> Double Somenull Ref: NRO308
	<b>TT3</b> Balance Posts with Rope Ref: NRO301
	<b>TT4</b> Balance Post Ref: NRO307
	<b>TT5</b> Dynamic Bar Ref: NRO303

**Notes:**  
All equipment located over easements to be surface mounted and service alignments/depths to be confirmed prior to installation.  
LEAP to be formed on a plateau with a maximum 1:80 long fall as indicated by the levels shown.  
Trim trail equipment to be set in individual plateaux  
Falls beyond plateaux to be into wider levels design with max 1:3 gradients.  
All play equipment as supplied by Korsoon (www.korsoon.com) or similar product from an approved manufacturer. All equipment to be installed with grass safety surfacing in line with manufacturer guidelines unless shown within wet pour rubber surfacing.  
All play equipment and layout proposals to be specified in accordance with the requirements set out under BS EN 1176 and Equality Act 2010. Following the agreement of play equipment and the general arrangement the selected manufacturer's details will be submitted to the local council for approval along with the finished proposals and accompanying certificates and details. Signs are to be supplied and erected that the play area is a Dog free zone and any other information required. Exact wording to be agreed with the local Planning Authority.



LAP Proposals



Trim Trail Equipment

Drawing to be read in conjunction with GLY0043 SP 01 Landscape Specification.