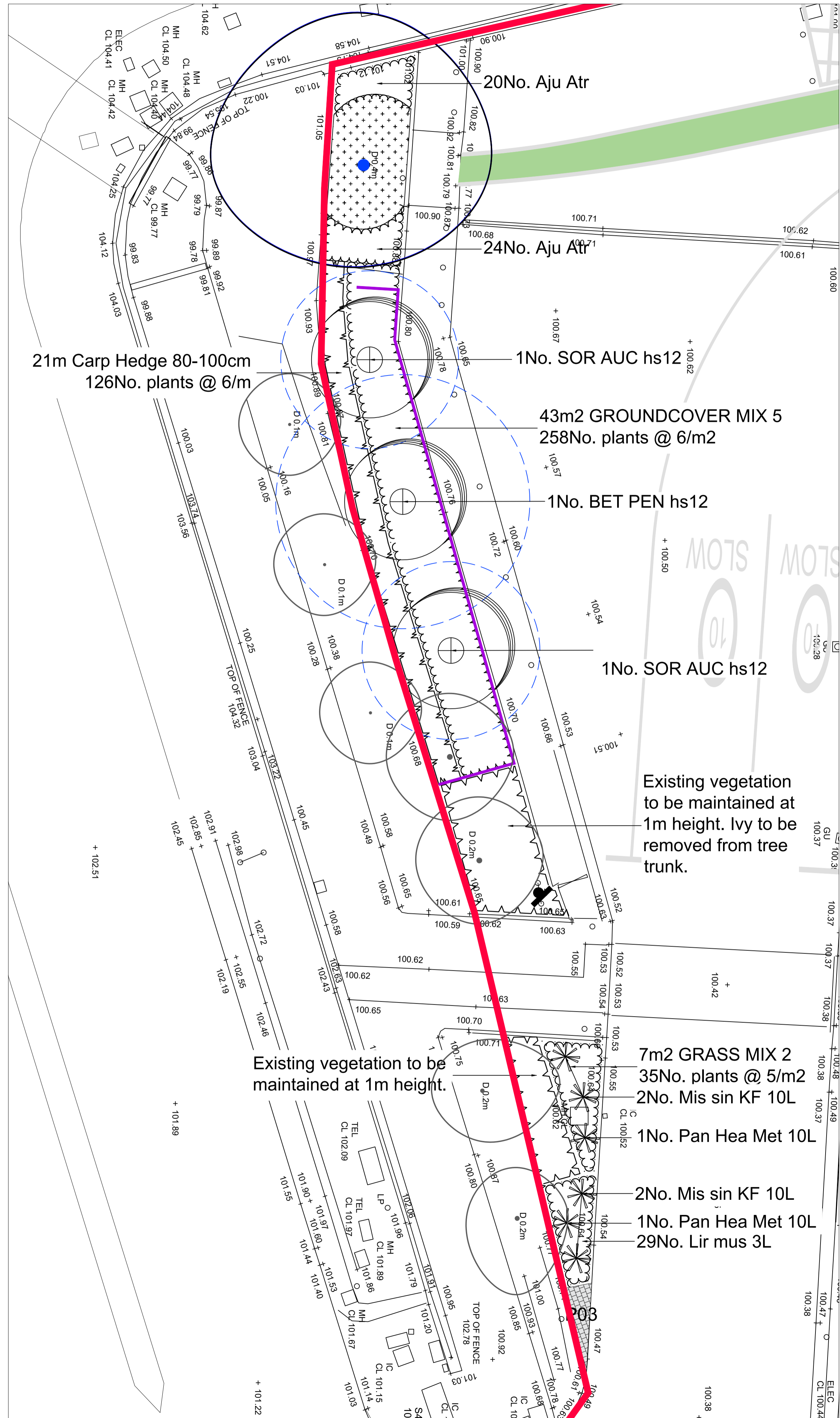
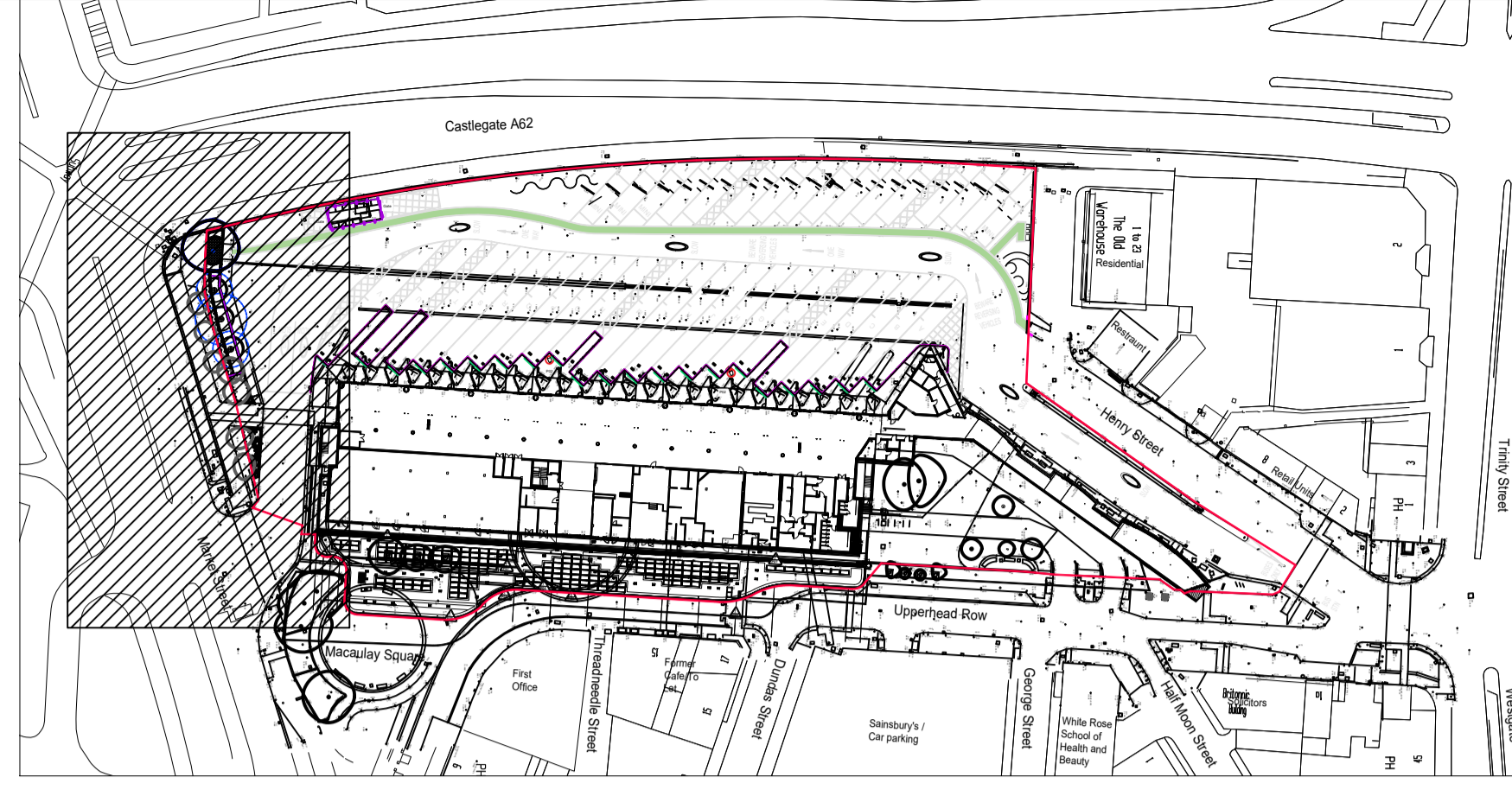


**PLANTING PLAN**



**LOCATION PLAN**



**PLANT SCHEDULE**

**TREES**

QTY	CODE	PLANT NAME	STOCK	FORM	GIRTH/HEIGHT	SPECIFICATION
1No.	BET PEN hs12	Betula pendula	RB	STD	12-14cm	3x; heavy standard; clear stem minimum 175-200, 350-425cm ht; 5 brks
2No.	SOR AUC hs12	Sorbus aucuparia	RB	STD	12-14cm	3x; HS; clear stem 175-200cm; 5 brks

**HEDGES**

QTY	CODE	PLANT NAME	STOCK	SIZE	SPECIFICATION
21m	Carp Hedge 80-100cm	Carpinus betulus	C 5L	80-100cm	1+1; Transplant - seed raised; branched; 5 breaks
126No.	Plants spaced @ 6m in a Double Staggered Row				

**HERBACEOUS PLANTS**

QTY	CODE	PLANT NAME	STOCK	SPACING	SPECIFICATION
44No.	Aju Atr	Ajuga reptans "Atropurpurea"	C 2L	5/m2	Full pot
29No.	Lir mus 3L	Liriope muscari	C 3L	5/m2	Full pot
4No.	Mis sin KF 10L	Miscanthus sinensis "Kleine Font ne"	C 10L	1/m2	Full pot
2No.	Pan Hea Met 10L	Panicum virgatum "Heavy Metal"	C 10L	1/m2	Full pot

**PLANT MIXES**

PERCENT	QTY	PLANT NAME	STOCK	SIZE	SPECIFICATION
43m2 GROUNDCOVER MIX 5 planted @ 6/m2					
25%	65No.	Geranium macrorrhizum "Johnsons Blue"	C 2L	20-30cm	
25%	65No.	Hedera helix "Green Ripple"	C 2L	20-30cm	3 breaks
25%	65No.	Pachysandra terminalis	C 2L	20-30cm	9 breaks
25%	65No.	Vinca minor "Gertrude Jekyll"	C 2L	20-30cm	3 breaks
Individual varieties to be planted in groups of between 9 and 17.					
7m2 GRASS MIX 2 planted @ 5/m2					
15%	5No.	Carex elata 'Aurea'	C 3L	-	Full pot
25%	9No.	Stipa tenuissima	C 3L	-	Full Pot
20%	7No.	Deschampsia cespitosa 'Goldtau'	C 3L	-	Full pot
15%	5No.	Carex oshimensis 'Evergold'	C 3L	-	Full pot
25%	9No.	Festuca Glaua 'Elijah Blue'	C 3L	-	Full pot
Individual varieties to be planted in groups of between 3 and 5.					

**NOTES AND ABBREVIATIONS:**

C = Container (or pot) grown, followed by size of the container (or pot).  
 FORM = Shape of tree as supplied by the nursery.  
 QTY = Quantity  
 RB = Rootballed (balled and wrapped).  
 SIZE = Height or Spread of juvenile plant.  
 Std = (clear stem) Standard.  
 STOCK = Root condition/protection method eg Bare root.

- Refer to specification for further information.  
 - All plants to be completely hardened off.  
 - Substitutions to be agreed with Landscape Architect.  
 Plant Schedule generated by "Qscape" software 16/05/2024

**KEY**

- Soft Works**
- Existing (Cat B) Tree to be Retained - see Arboriculture report 'Huddersfield Bus Station - BS 5837:2012 Arboricultural Report, Impact Assessment and Method Statement' produced by Ecus Ltd for further details
  - Existing (Cat C) Tree to be Retained - see Arboriculture report 'Huddersfield Bus Station - BS 5837:2012 Arboricultural Report, Impact Assessment and Method Statement' produced by Ecus Ltd for further details
  - \* as defined by BS 5837:2012
  - Existing tree as part of phase 2 - see Arboriculture report for further details
  - Proposed Tree - see plant schedule for species and specification
  - Indicative extent of tree's mature canopy spread (if it extends beyond tree graphic symbol)
  - Existing Vegetation to be protected and retained. Cut to 1m height at the appropriate time for the species.
  - Proposed Hedge Planting - see plant schedule for species and specification
  - Proposed Herbaceous / Perennial Planting - see plant schedule for species and specification
  - Proposed Specimen Shrub - see plant schedule for species and specification
  - Proposed Root barrier - shown indicatively. ReRoot 1000 (Ribbed) by GreenBlue Urban (www.greenblue.com) or similar approved
  - Proposed Well Rotted Bark Mulch to Existing Tree's Root Protection Area to promote root growth and compensate for any root damage

**GENERAL NOTES**

- Drawing for Planning purposes only
- Ecus drawing/ document references: HBS-ECS-ZO-SL-DR-L-00001 General Arrangement HBS-ECS-ZO-SL-DR-L-00002 Planting Plan sheet HBS-ECS-ZO-SL-DR-L-00003 Outline Soft Specification & Maintenance Schedule
- Refer to Arboriculture Report "XXXX" for details of existing vegetation to be retained and protection measures. All works within the vicinity of the existing trees to be overseen by an appointed qualified Arboricultural consultant acting as ECoW in accordance with the Arboricultural Method Statement.
- Site Layout provided by BGH Ltd on drawing no: HBS-BGH-ZO-XX-DR-C-0021 P01
- Building foundations to be confirmed by Engineer with reference to planting proposals and NHBC guidance (or alternative where applicable). Tree locations to be fully co-ordinated once building foundation depth are confirmed. Requirements for root barriers to be confirmed by an engineer.
- Refer to Engineer's details for level and drainage information
- Levels to be confirmed following coordination with the design team.
- Levels to be verified by the contractor with any variations to be reported to the drainage engineer
- For lighting proposals, see "HBS-KCE-XX-XX-D-E-6310" produced by Kaizen Consulting Engineers
- Setting out on site to be agreed with Landscape Architect
- Check all dimensions on site.
- Do not scale from this drawing
- Report any discrepancies and omissions to Ecus Ltd
- This drawing is Copyright
- All levels indicative only. Extrapolated from site levels. All require to be checked.
- All details subject to approval by the local authority for the discharge of relevant planning conditions.

**3RD-PARTY INFORMATION**  
 NB This drawing includes information provided by independent surveyors and / or consultants, to whom all queries shall be made. Ecus Ltd can accept no liability for its context or accuracy.

**DESIGN**  
 Unless stated otherwise, the designs shown are subject to detailed site survey, investigations, and legal definition, the CDM regulations and the comments and / or approval of the various relevant Local Authority Officers, Statutory Undertakers, Fire Officers, Engineers and the like. They are copyright, project specific and confidential. No part is to be used or copied in anyway without the express prior consent of Ecus Ltd.

**TREE NOTES:**  
 Note that all tree and shrub locations are subject to coordination with services, to be undertaken by others. **The requirement for root barriers is to be confirmed by an engineer.**  
 Note that it is best practice that root barriers are required to extend 2m beyond the mature canopy spread of new trees to protect all structures and hard landscape elements, such as highways, services and buildings. In addition, root barriers are required for all new trees within 5m of highways - e.g. GreenBlue Urban 'Reroot 2000' or similar. Depth of tree root barrier to be confirmed by an engineer once services design has been produced at construction detail. Install to manufacturer's and engineer's guidance.

- CDM - Risks / Hazards**
- Proposed locations of landscape elements shown are subject to the presence of below ground services. A detailed survey is to be undertaken and necessary method statements prepared and approved prior to undertaking any excavations / work within this area.
  - Care to be taken when working in proximity to the surrounding existing roads.
  - Care to be taken when clearing the existing site due to the potential presence of needles, litter etc.

ID	RISK	MITIGATION	DATE OF MITIGATION	
<b>RESIDUAL PROJECT RISKS</b>				
P02	07.08.24	TAB	Ecus	Phase 1 boundary updated
P01	15.05.24	JS	Ecus	Preliminary

REV	DATE	DRAWN BY	CHECKED BY	REVISION COMMENT

**DRAWING STATUS:** Preliminary

**ecus**  
 Brook Holt  
 Blackburn Road  
 Sheffield S61 2DW  
 Tel. (0114) 2669292  
 www.ecusltd.co.uk

Job  
**Huddersfield Bus Station, Upperhead Row, Huddersfield**

Title  
**Landscape Proposals - Detailed Planting Plan & Planting Schedule**

Drawn by	Date	Scale
JS	Mar 24	1:100 at A1

Drg. no.  
**HBS-ECS-ZO-SL-DR-L-00002**

