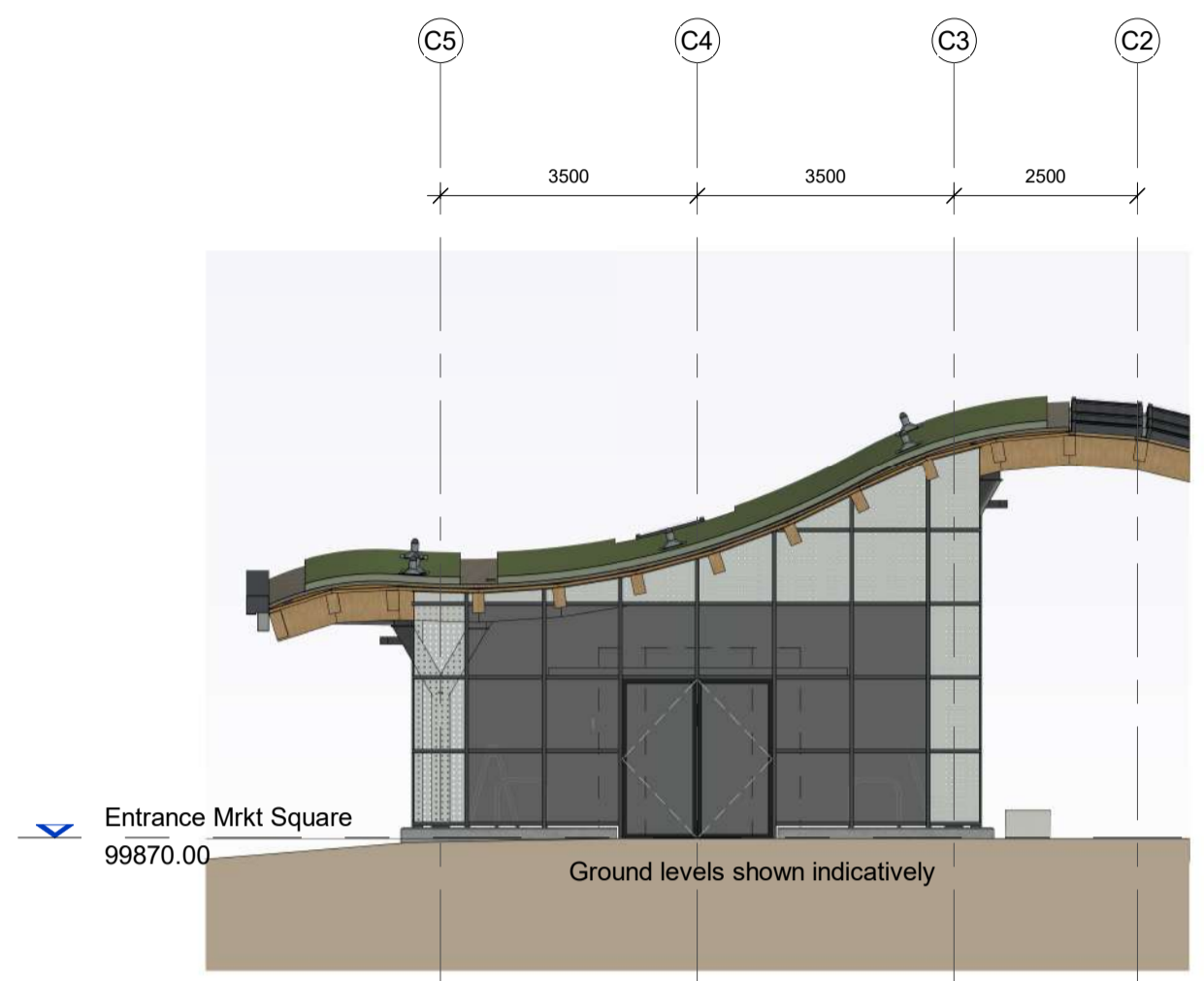


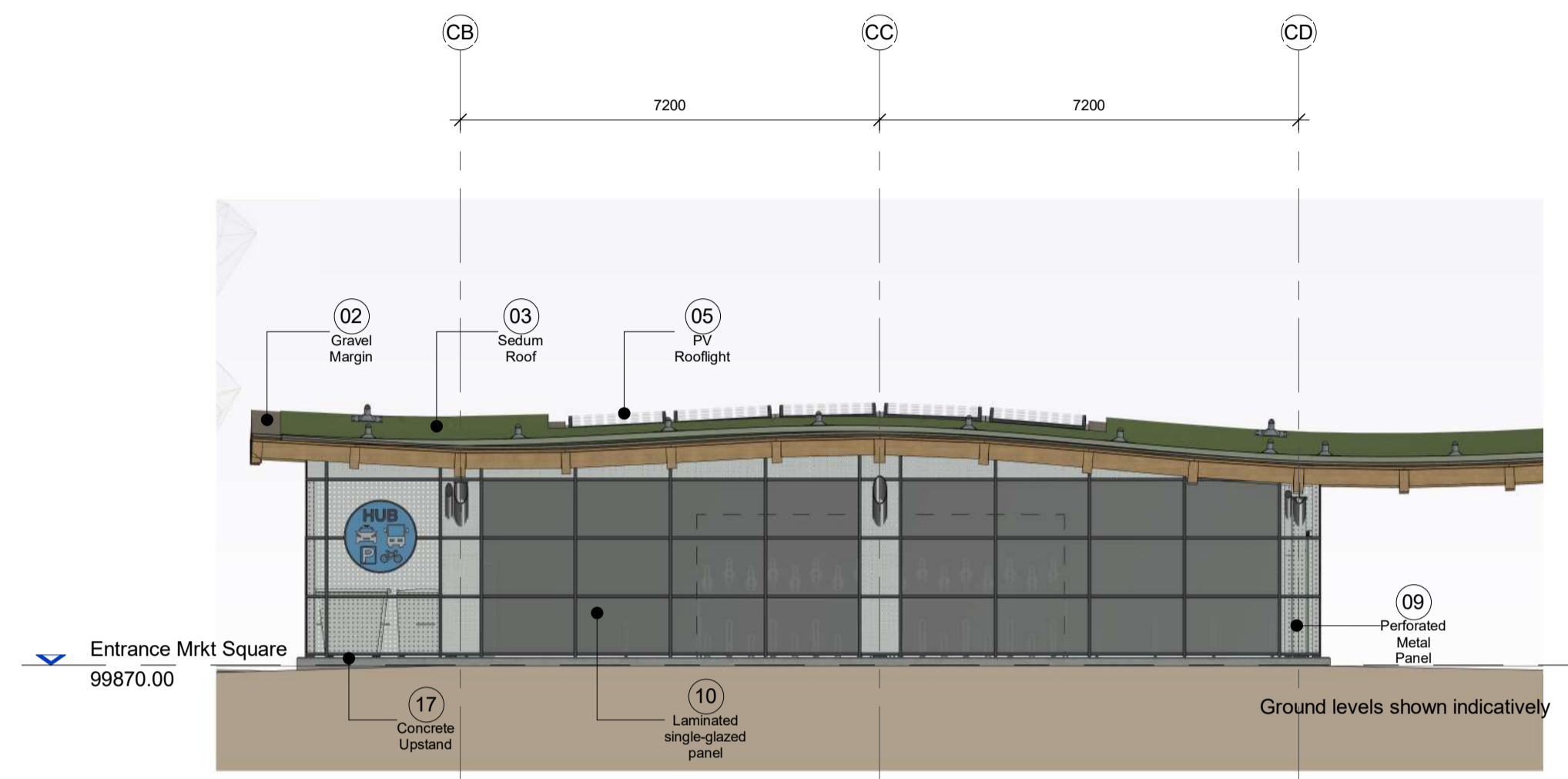
| Rev | Date | Chk | Drw | Description |
|-----|----------|-----|-----|--|
| P01 | 19/01/24 | MB | RT | WIP Drawing issued for information and coordination purposes. |
| P02 | 30/04/24 | AB | MB | Drawing issued as Draft Planning Submission for information and review purposes. Includes revision (clouded) to canopy to accommodate highway stand off. |
| P03 | 12/06/24 | MB | MB | Planning drawing issued for approval purposes. Includes amendments following ECI process. |

Planning Materials Schedule

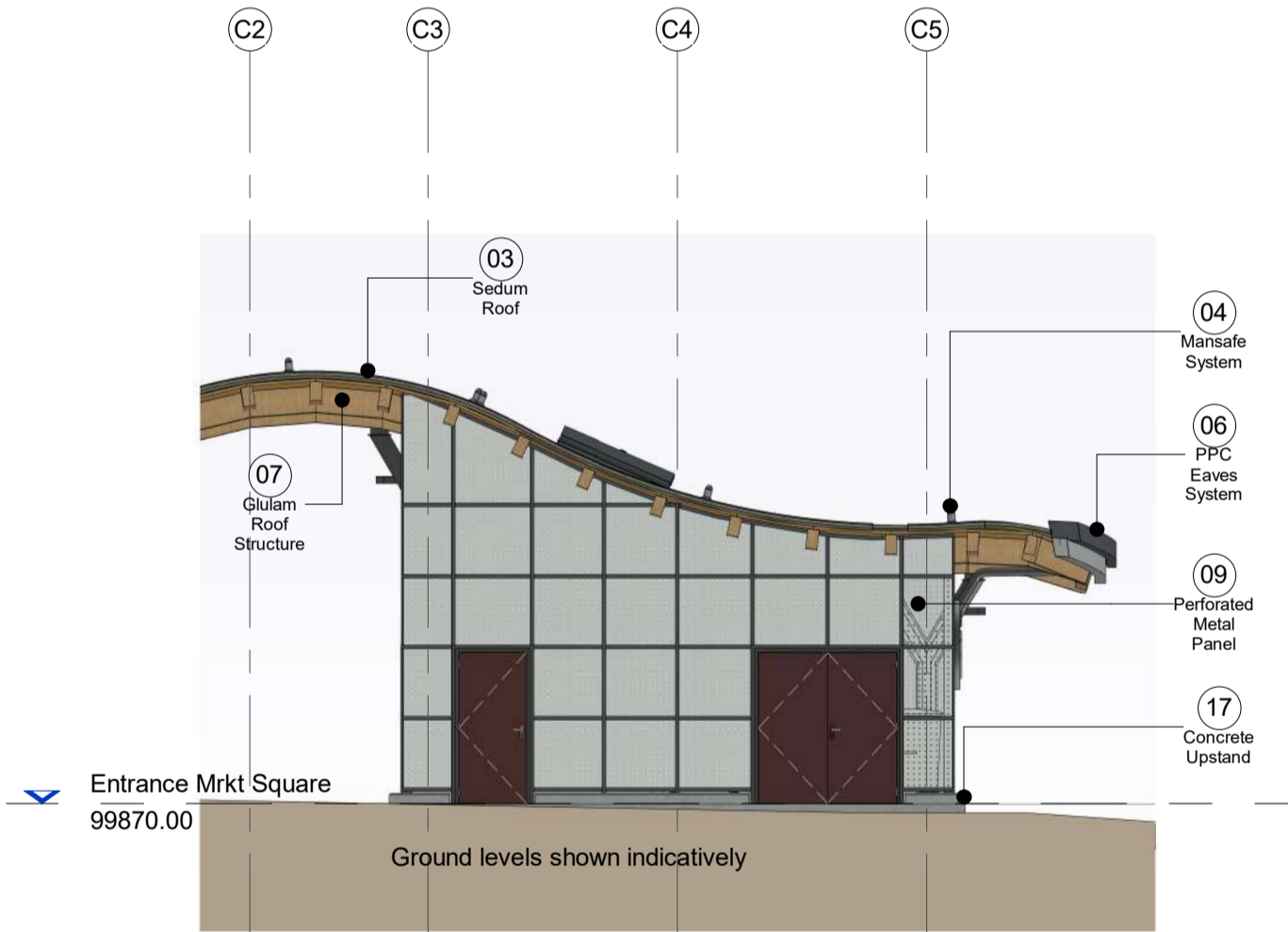
- "Light" Grey RAL 7035 Light Grey / LRV 57 / RGB 197/199/196
 - "Mid" Grey RAL 7004 Signal Grey / LRV 33 / RGB 155/155/155
 - "Dark" Grey RAL 7024 Graphite Grey / LRV 07 / RGB 70/73/79
1. Perforated Mesh Artwork / PPC Light Grey - Panels / PPC Dark Grey - Framing
 2. Gravel Margin - natural finish
 3. Sedum Roof - natural finish
 4. Mansafe System - natural finish
 5. PV Rooflights - PPC Dark grey - Framing & Flashings
 6. PPC Eaves System - Two colour lazer line system. Upper - Dark Grey / Lower - Mid Grey
 7. Glulam Roof Structure - Structural Beams - natural finish - Plywood Soffit - natural finish
 8. Steel Columns - PPC Mid Grey
 9. Perforated Metal Panels - PPC Light Grey
 10. Laminated single glazed panel - Clear Glass - Tint TBC
 11. Decorative Cladding Panel - Rockpanel or EQ - Dark Grey
 12. Plank effect soffit - PPC Timber effect planks.
 13. Removable Grillage Walking Gutter Galvanised - natural finish.
 14. Stone Cladding - To match WYCA Scheme.
 15. PPC Clad Totems - PPC Dark Grey & Mid Grey
 16. Curtain Wall Shopfront - PPC Dark Grey - Frames PPC Light Grey - Doors & Spandrel
 17. Exposed Concrete Upstand - natural finish
 18. Utility Doors (Louverd and Solid) PPC Dark Grey



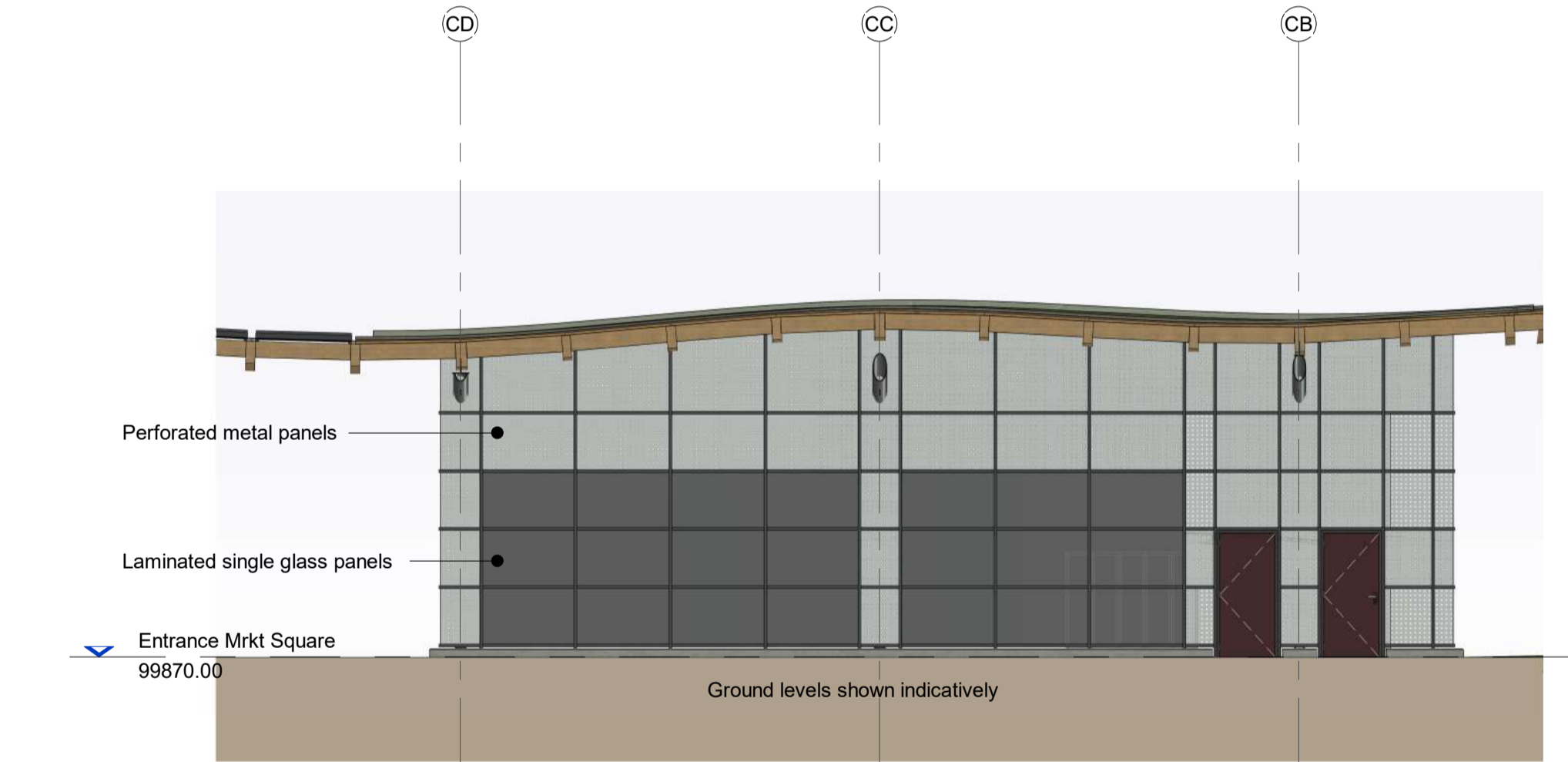
E1 Cycle Hub Entrance (North) Elevation
Scale: 1 : 100



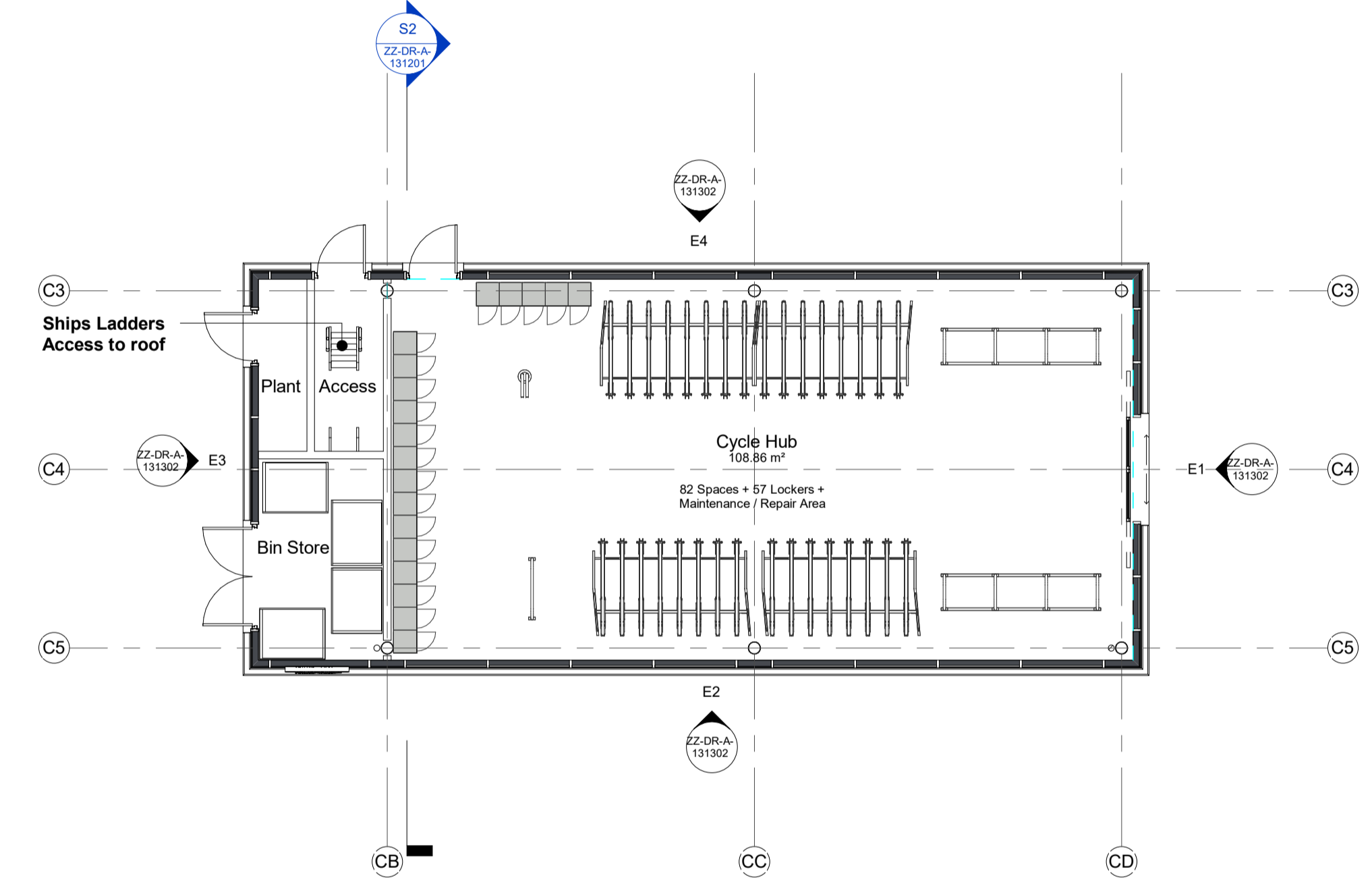
E2 Cycle Hub Front (East) Elevation
Scale: 1 : 100



E3 Cycle Hub South Elevation
Scale: 1 : 100



E4 Cycle Hub Rear (West) Elevation
Scale: 1 : 100



P1 Proposed Cycle Store Plan
Scale: 1 : 100

