



Arboricultural Impact Assessment

at
Phoenix Works
Scisset



Table of Contents

1 Purpose and scope of report.....	3
2 General information.....	3
3 Trees selected for removal, retention and/or pruning.....	3
4 Evaluation of impact of tree losses.....	4
5 Evaluation of tree constraints and tree protection plan.....	4
6 Issues to be addressed by an arboricultural method statement.....	4
7 Consultant's qualifications and experience.....	5
8 Contact Details.....	6
Appendix 1 Tree works.....	7
Appendix 2 Tree Protection Plan.....	8



1 Purpose and scope of report

This report has been created in accordance with BS5837:2012 to assess the impacts of proposed development as shown at Appendix 2, and also incorporates information taken from our tree survey Ref 240804/TS. This impact assessment should be read in conjunction with the tree survey, and as required by BS5837, it includes consideration of:

- The tree survey
- Trees selected for retention
- Trees selected for removal
- Trees to be pruned
- Areas designated for structural landscaping which need soil protection
- Evaluation of impact of tree losses
- Evaluation of tree constraints and tree protection plan
- Issues to be addressed by an arboricultural method statement

2 General information

It is advisable to have trees regularly surveyed by a suitably qualified and experienced arboricultural consultant. In this instance it is recommended that the next survey is undertaken within 12 months of this report. If the site or adjacent areas change use, or if there are significant changes to the condition of the site or adjacent areas, or if there are significant changes to the trees surveyed, it is recommended that professional arboricultural advice is obtained.

The plans included as part of this report are based on those provided by the client or their representatives. Whilst reasonable steps are taken to ensure plans are accurate and correct, the consultant will not be responsible for errors or omissions arising due to information provided by the client or the client's representatives.

All tree works should be carried out to BS 3998:2010 - '*Recommendations for tree work*' unless otherwise specified, and by a suitably qualified, experienced and insured contractor.

3 Trees selected for removal, retention and/or pruning

No high value trees will be removed as part of this project.

Part of groups G1 and G3 will be removed, but the woodland group G4 will be unaffected.



4 Evaluation of impact of tree losses

No high value trees will be removed as part of this project, and the woodland group which is visible from public roads will be unaffected. There will be no significant impact on the local tree-scape.

5 Evaluation of tree constraints and tree protection plan

All excavation is located outside tree root protection areas.

Tree constraints and potential affects have been assessed in accordance with Section 5 of BS5837:2012.

The land use and user conditions will not be adversely affected by retained trees.

The impacts of this development on retained trees has also been assessed in accordance with Section 5 of BS5837:2012.

This project will not damage retained trees.

6 Issues to be addressed by an arboricultural method statement

The preliminary tree protection plan as attached shows that trees can be adequately protected during development by using standard and commonplace protection measures such as tree protection fencing and ground protection.



7 Consultant's qualifications and experience

This report has been undertaken by James Royston who has over twenty years experience in arboriculture, forestry, and urban forestry, of which the last 12 years have been spent as a full-time consultant specialising in trees and development, tree related hazards, and sustainable tree management.

In addition, this experience has included work as a tree officer in local authority planning departments, expert witness work for the courts, subsidence investigation works for loss adjusters and insurance companies, and undertaking the role of president of the Consulting Arborist Society.

Academic qualifications include:

MSc Arboriculture and Urban Forestry,
BSc (Hons) Forestry.

Recent professional development courses have included:

Tree Preservation Order Workshop *by the Consulting Arborist Society*,
Trees and Mortgage/Insurance Reporting *by the Association of Mortgage Users Insurance Group*,
Professional Tree Inspection *by LANTRA Awards*,
BS5837:2012 Workshops *by the Arboricultural Association*,
The Future of Tree Risk Management part I and II *by the Treeworks Environmental Practice*,
Trees and Subsidence *by OCA Ltd*,
CTLA Tree Valuation Seminar *by the Consulting Arborist Society*,
Expert Witness Training *by Bond Solon*
THREATS training *by Julian Forbes-Laird*.
Homebuyers Tree Reports *by the Consulting Arborist Society*

Professional associations have included:

Professional member of the Arboricultural Association and the Consulting Arborist Society.
Chartered Environmentalist.
Trustmark Approved Consultant – Working to Government Approved Standards.



8 Contact Details

I hope this report provides all the required information. However, if further advice is needed then please contact me and I will be happy to help.

James Royston – Independent Arboricultural Consultant

MSc Arboriculture and Urban Forestry, BSc (Hons) Forestry.

The Media Centre
7 Northumberland Street
Huddersfield
HD1 1RL

01484 483 061

jr@jamesroyston.co.uk

Report completed 19th August 2024



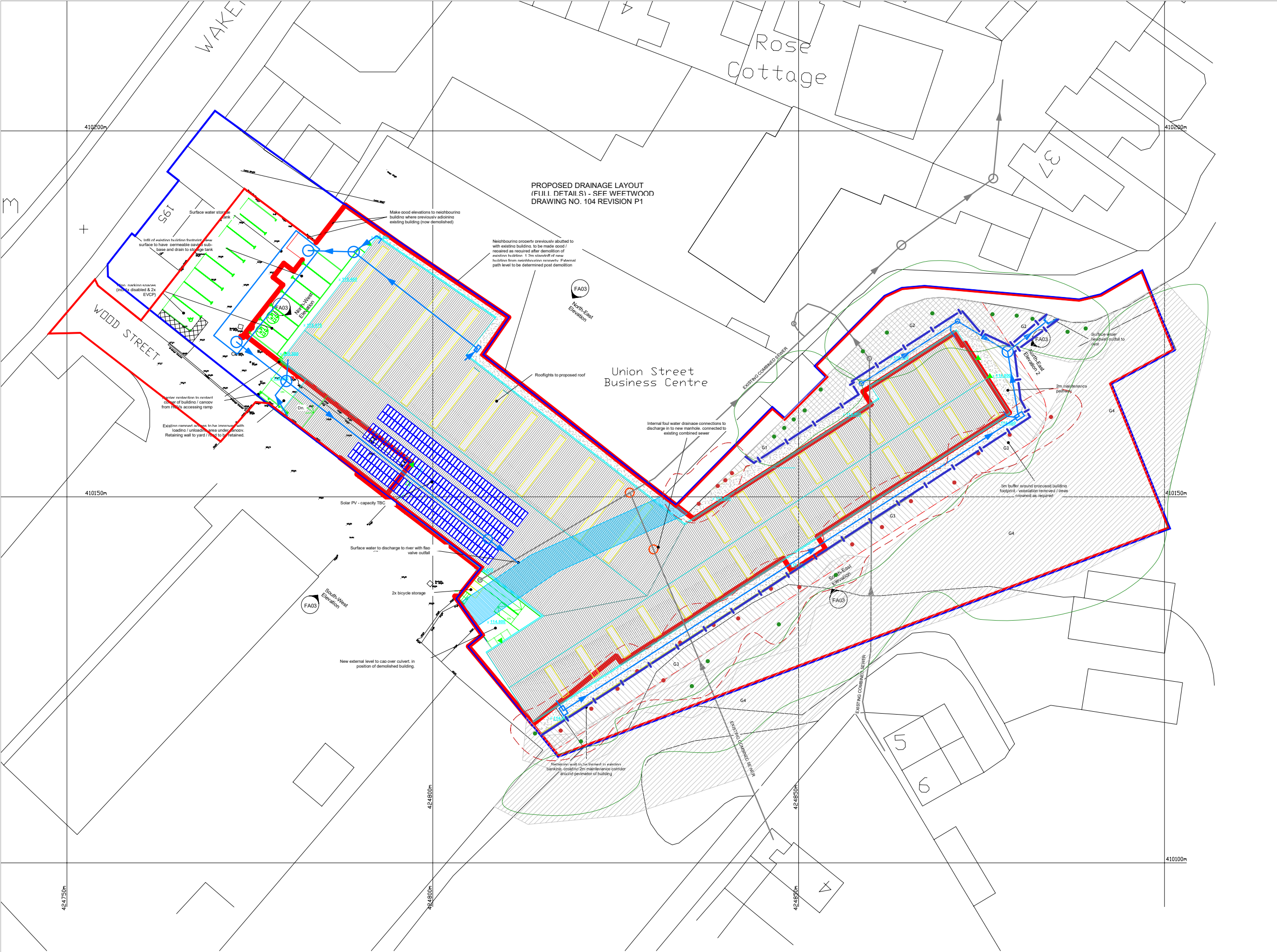
Appendix 1 Tree works



Tree Number	Common Name	Botanical Name	Pre-development tree works	Reason for works
1	Mix	<i>Mix</i>	Remove a section of this group as shown on attached plans	To facilitate development
2	Mix	<i>Mix</i>	None	NA
3	Mix	<i>Mix</i>	Remove a section of this group as shown on attached plans	To facilitate development
4	Mix	<i>Mix</i>	None	NA

Appendix 2 Tree Protection Plan





PROPOSED DRAINAGE LAYOUT
(FULL DETAILS) - SEE WFTWOOD
DRAWING NO. 104 REVISION P1

Union Street
Business Centre

James Royston
Arboricultural Consultant

The Media Centre - 7 Northumberland Street - Huddersfield - HD1 1RL
jr@jamesroyston.co.uk - 01484 483 061 - www.jamesroyston.co.uk

Tree Protection Plan to BS5837:2012 at:
Phoenix Works, Scissett

1:500 PAPER SIZE A3

Key	
	Tree to be retained
	Tree to be removed
	Root Protection Area (RPA) shown as a circle as an approximate guide.
	Location of tree protective fencing
	Area of special tree protection measures. See annotations and method statement for further details.

Note: Plans are for guidance only. These drawings should not be used for scaling.

