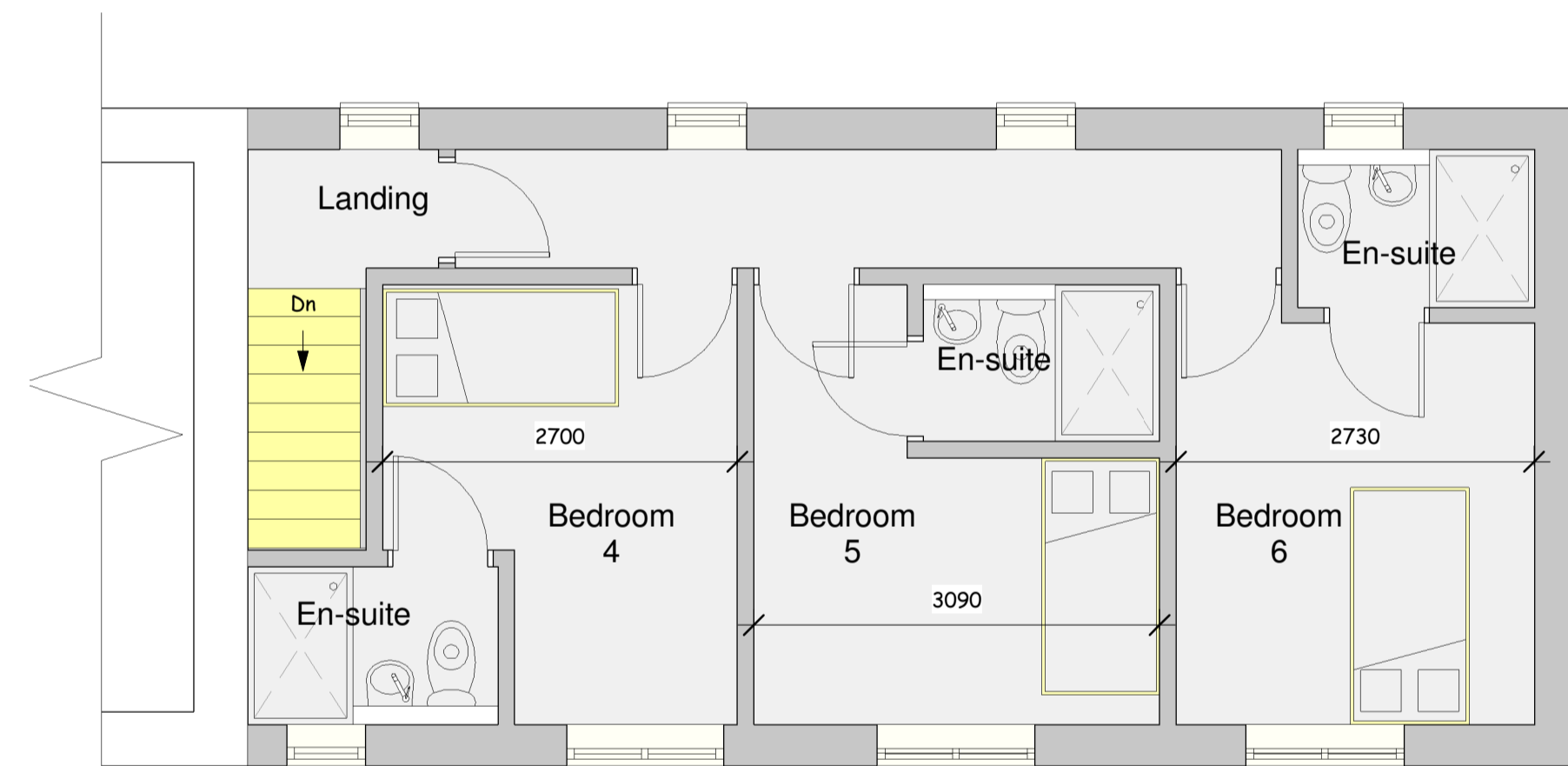
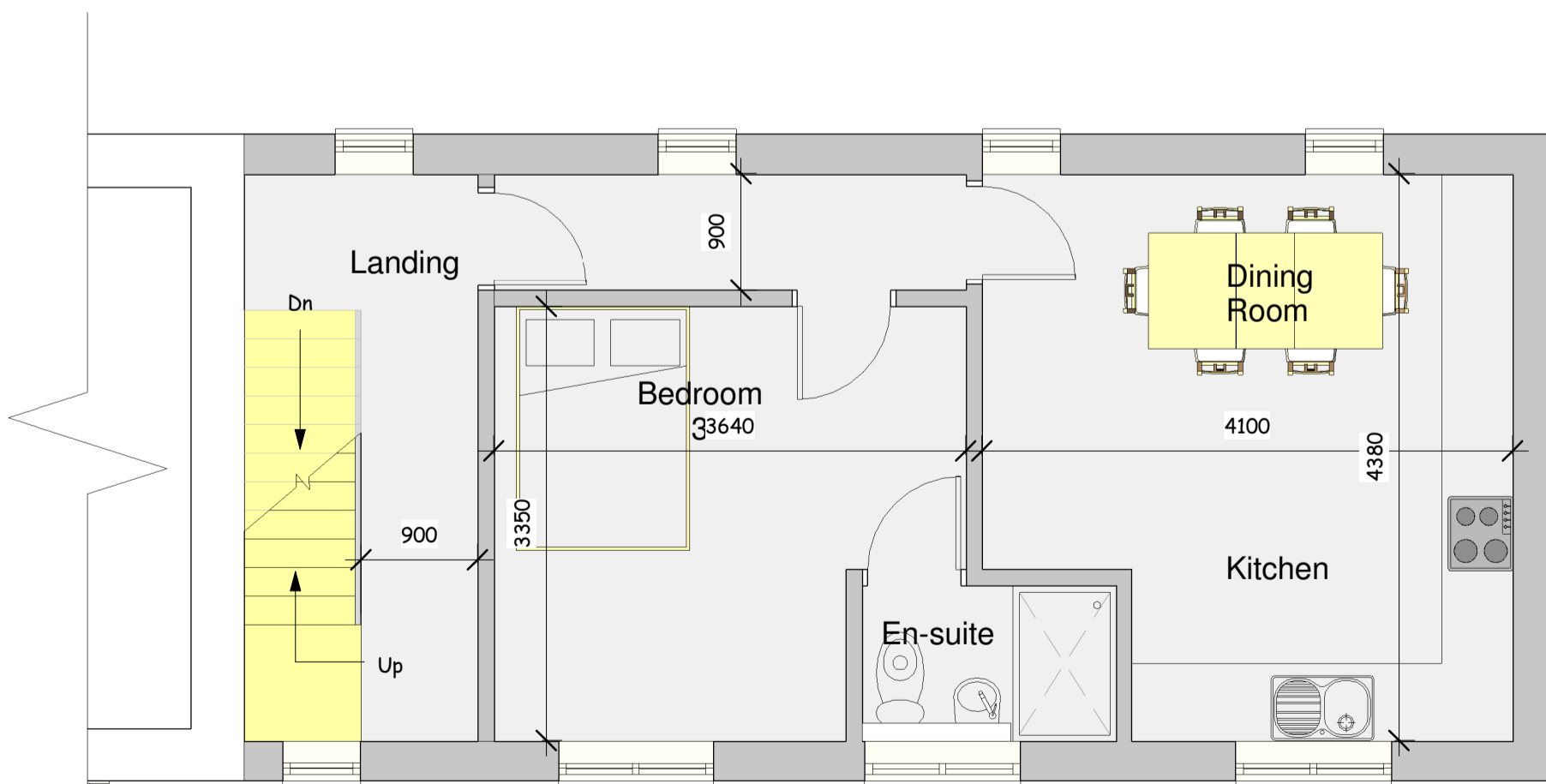


Rear Elevation
1 : 50



Second Floor with 3 En-Suite Bedrooms
1 : 50



First Floor with 1 Bedroom with En-suite and Kitchen/Dining
1 : 50

This drawing is copyright and must not be reproduced without written permission
Do not scale - Use figured dimensions only

PROJECT Proposed Side Extension to Form House in Multiple Occupation at 53 Wakefield Road, Aspley, Huddersfield. HD5 9AB.

CLIENT Mr Rafi

DWG TITLE First and Second Floor, Rear Elevation and View

DWG NO. 2318 - 03
Rev A

SCALE 1 : 50

DATE 16/07/2024

DB ARCHITECTS

31 Moor View, Meltham, Holmfirth, HD9 5RT
t:01484 850579 e:david.dbarchitects@virginmedia.com

