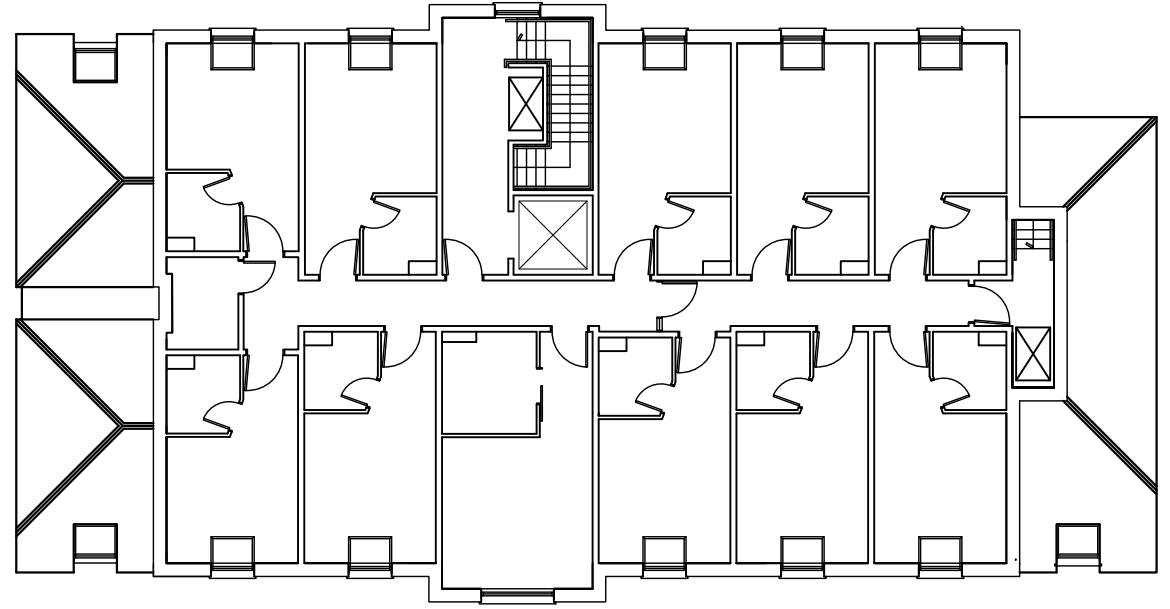
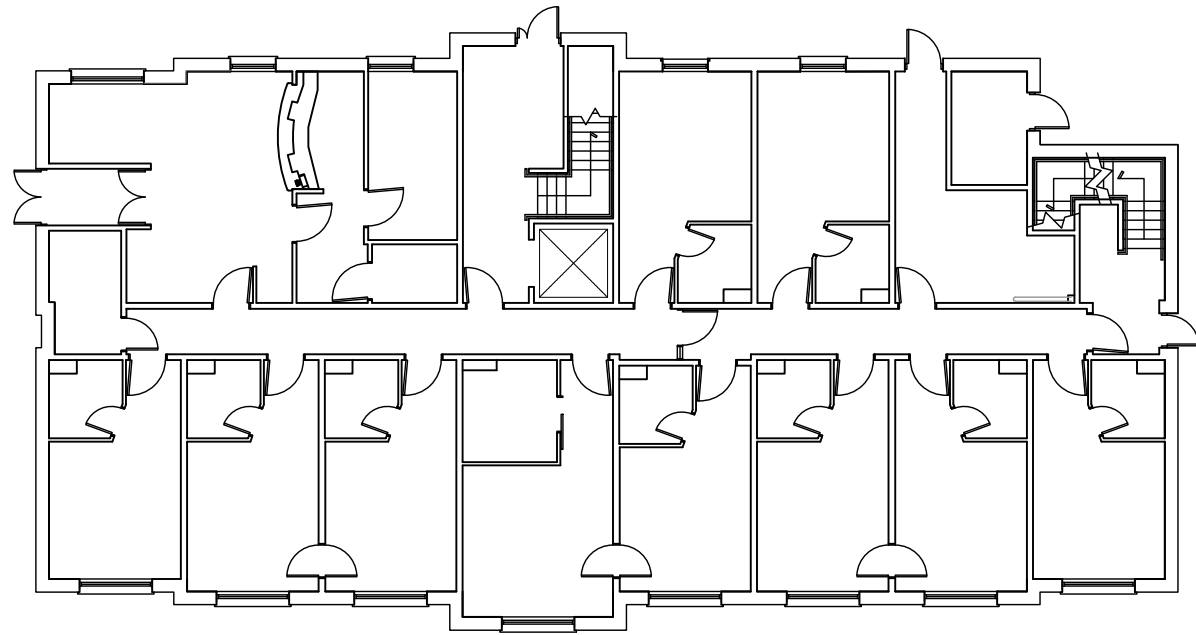


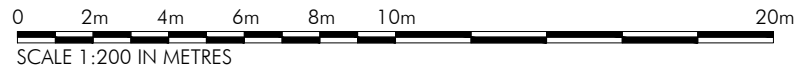
EXISTING FIRST FLOOR LAYOUT
SCALE 1:200




EXISTING SECOND FLOOR LAYOUT
SCALE 1:200



EXISTING GROUND FLOOR LAYOUT
SCALE 1:200



PLANNING ISSUE	BN DRAWN	DRAWN REVISION	6/3/24 DATE	VER
	 ALLISON PIKE ARCHITECTS & DESIGNERS			
	7 Buxton Road West, Disley, Stockport, Cheshire, SK12 2AE. Website: www.allisonpike.com			
	Telephone: 01663 763000 Facsimile: 01663 766772 Email: studio@allisonpike.com			
	<small>© Allison Pike Partnership Limited.</small>			
	PROJECT PREMIER INN EXTENSION WITH BREAKFAST ROOM PREMIER INN HUDDERSFIELD CENTRAL			
TITLE EXISTING PLANS				
SCALE 1:200 @ A3				
JOB No P11074	DRAWING No AP04	REV //		