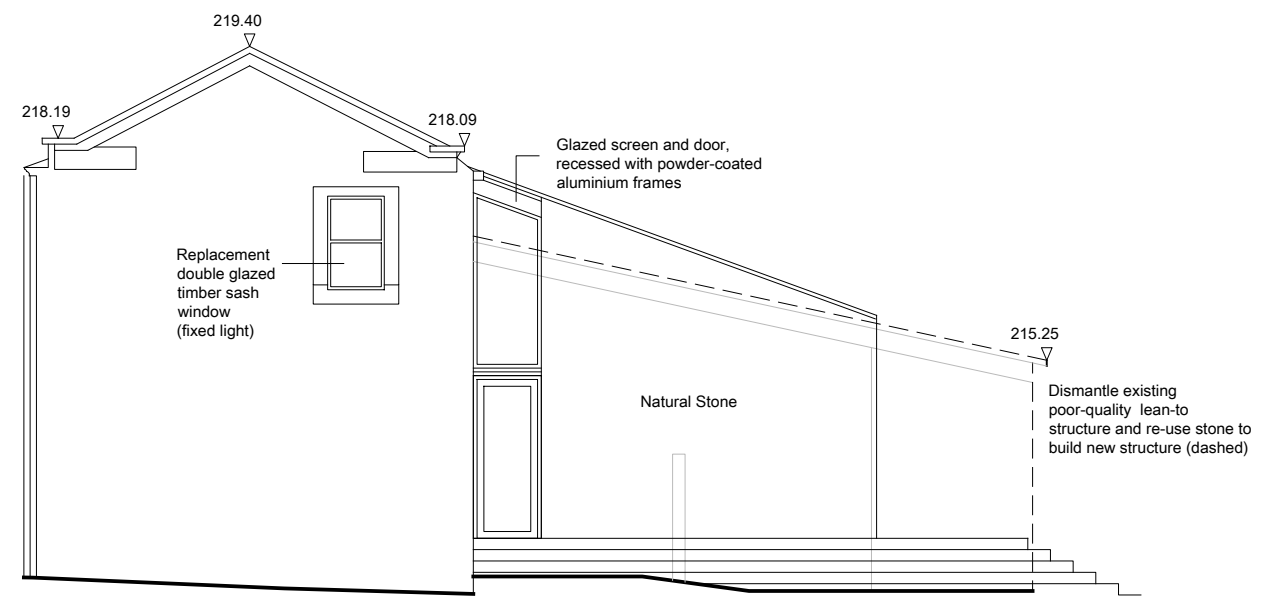
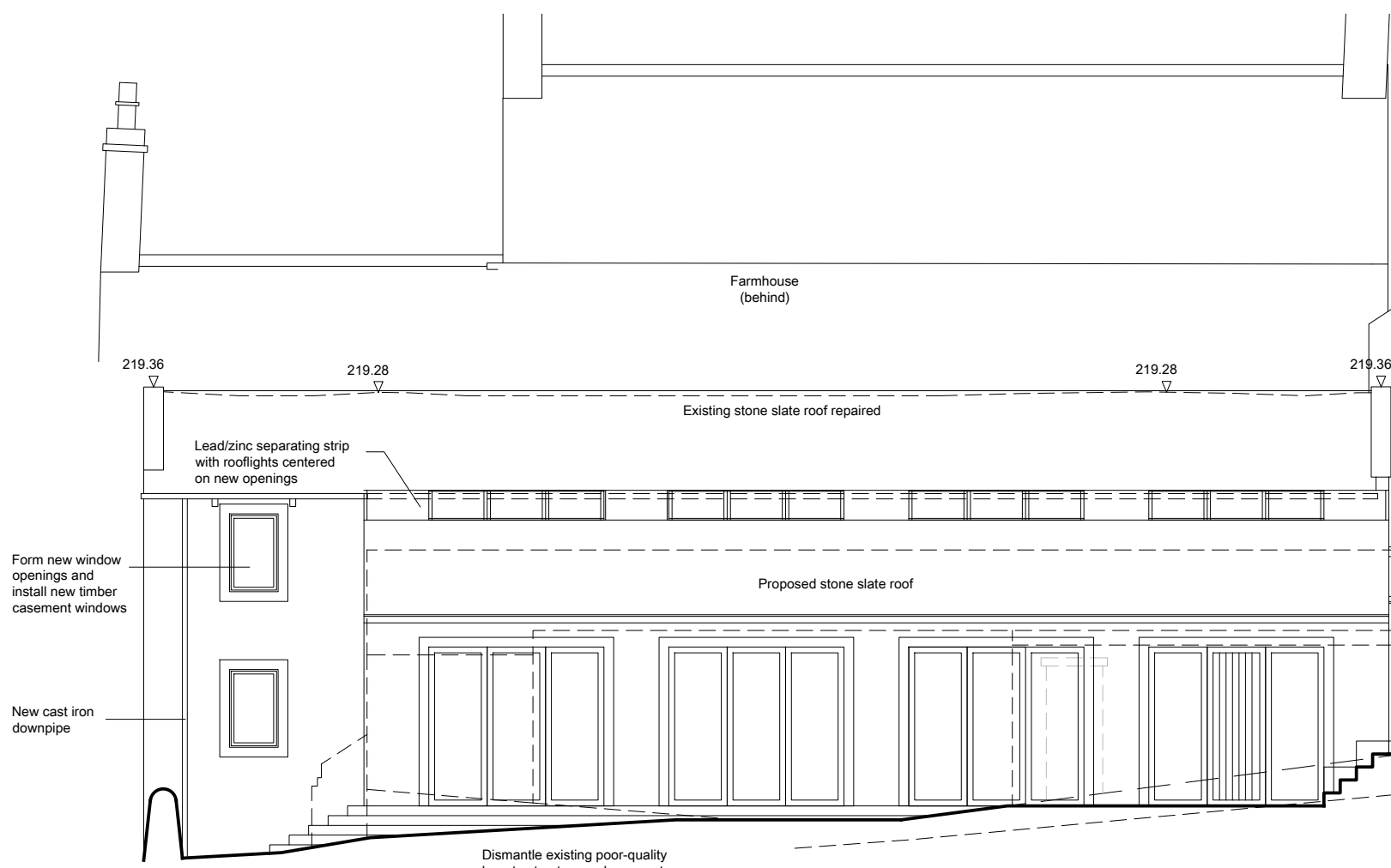




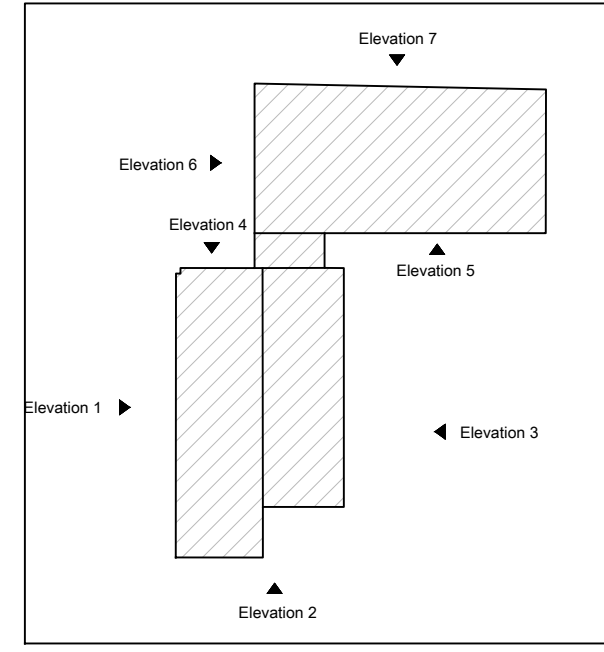
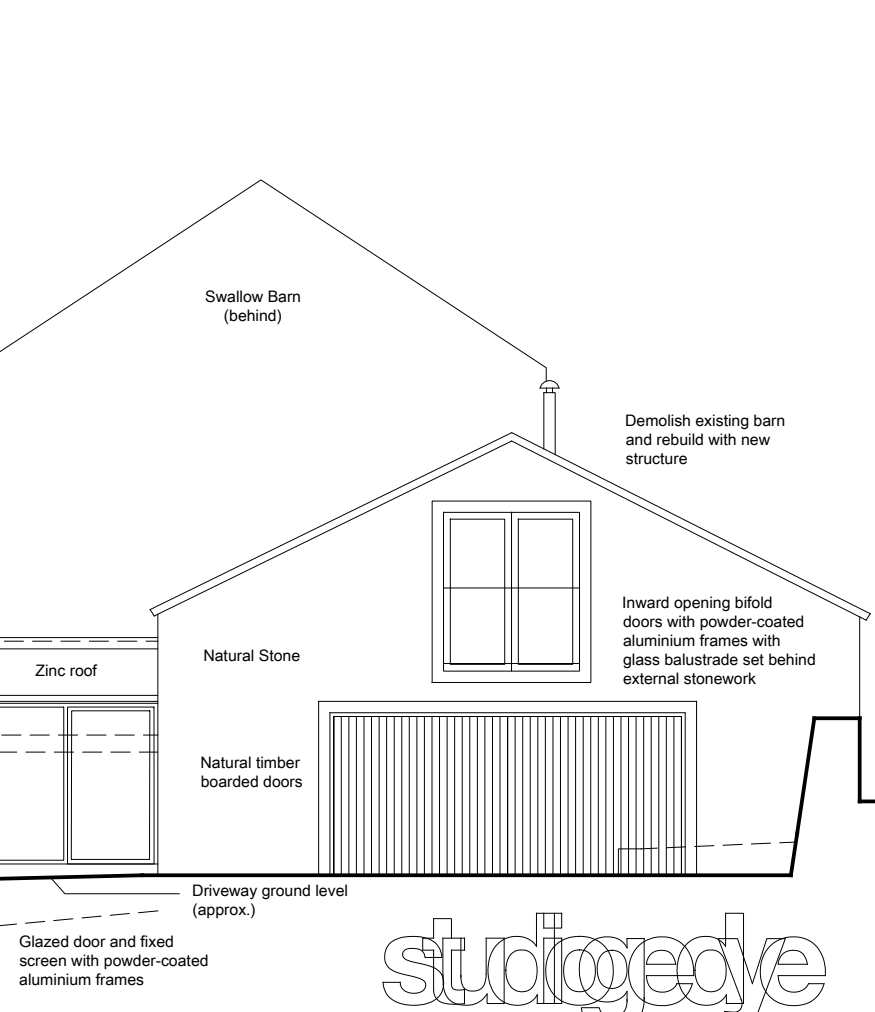
House 3 - Elevation 1



House 3 - Elevation 2



House 3 - Elevation 3



REV D 03/06/24 RW Window material specifications added
REV C 10/05/24 RW House 3 amendments following client comments
REV B 08/05/24 RW House 3 amendments following various comments
REV A 21/03/24 RW Sliding doors added to rear elevation

Amended Scheme

studio gedye
architecture and design

The Studio
2 Bank View
Main Road
Hathersage
Derbyshire
S32 1BB

T: 01433 659461 / 0791 253 4372
E: sgedye@mac.com

Project
Oldfield Road, Honley
Holmfirth, HD9 6RL

Drawing title
House 3
Elevations 1, 2 & 3

Drawn by RW	Date 29/02/24	App'd -
Drawing no 312	Project no 21030	Scale @ A3 1:100
		Rev D