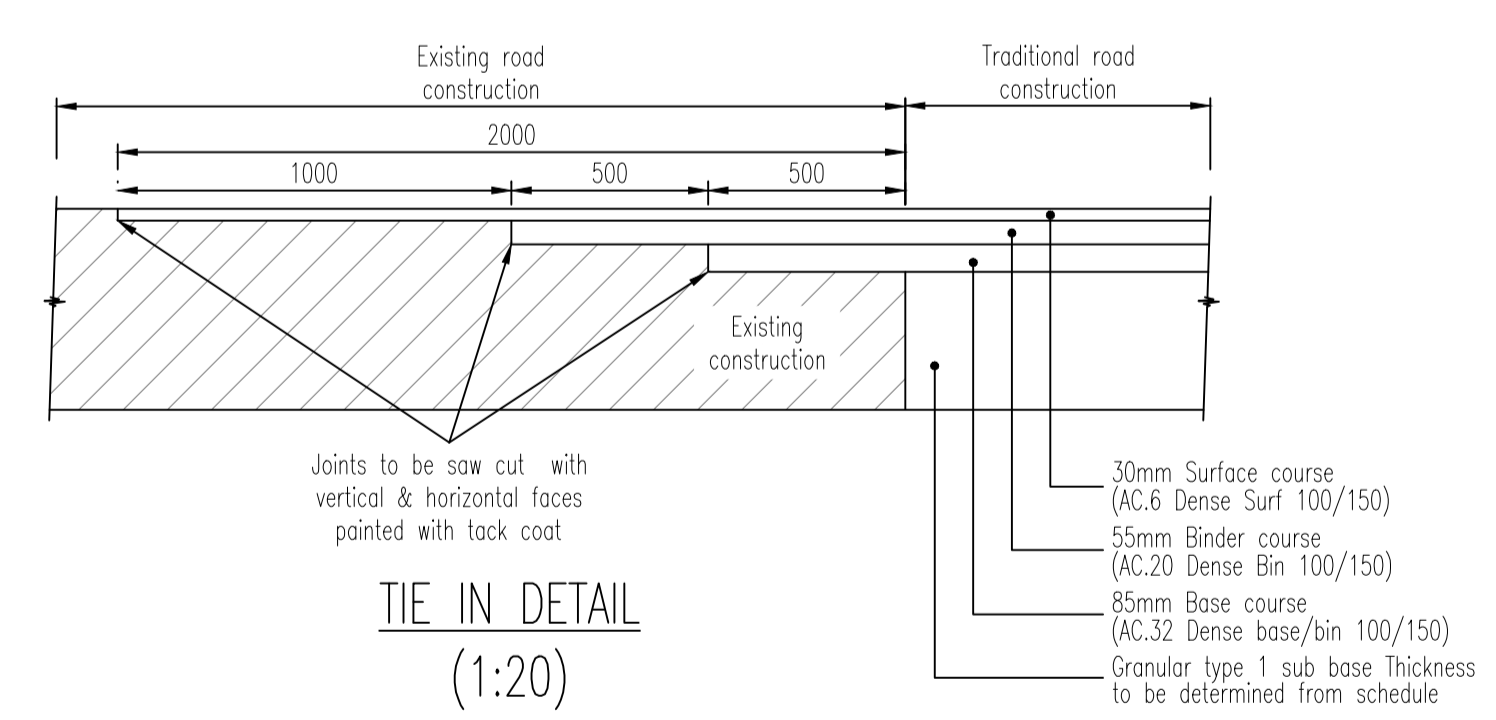
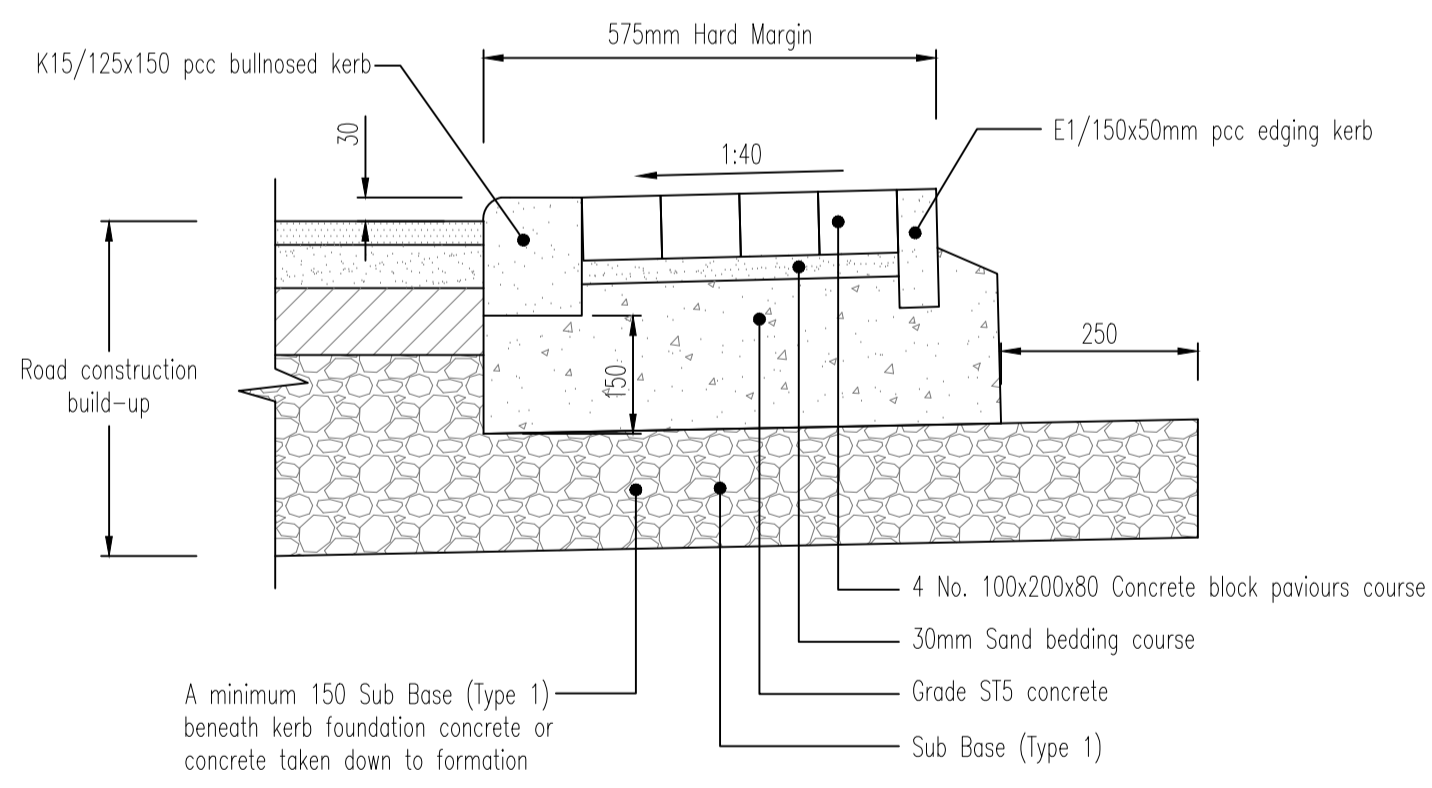
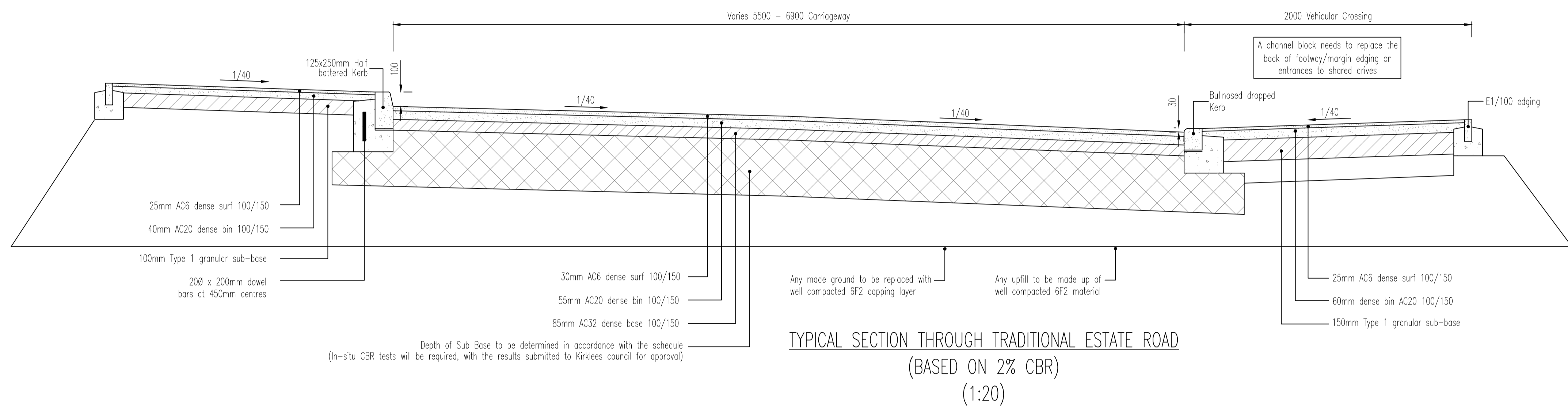
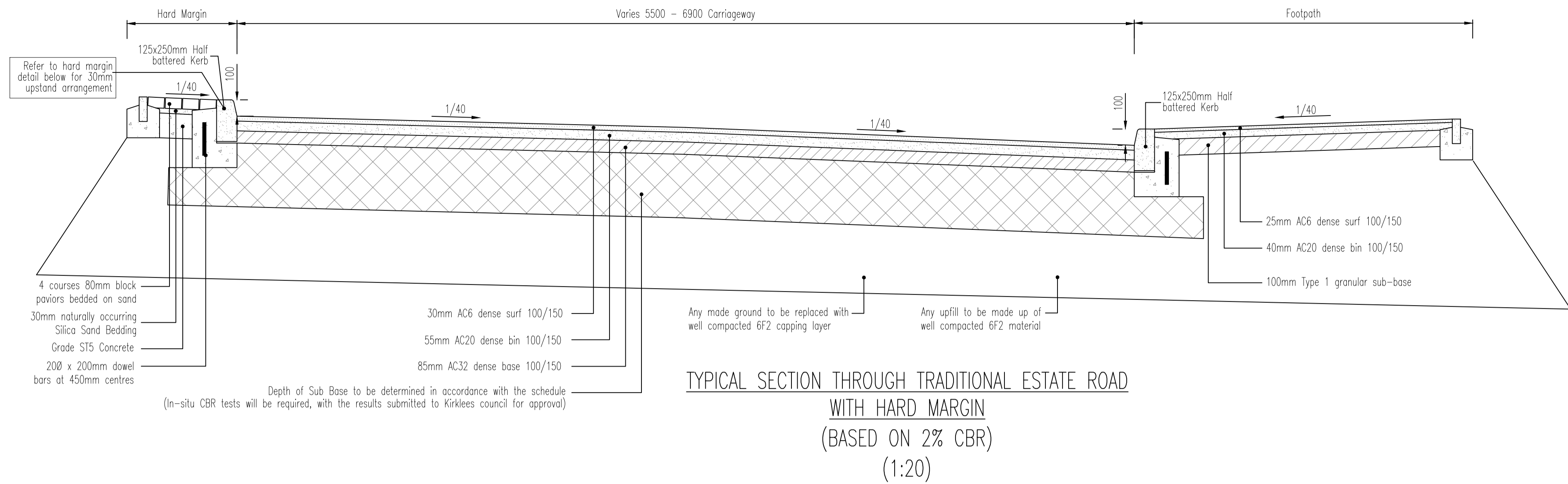
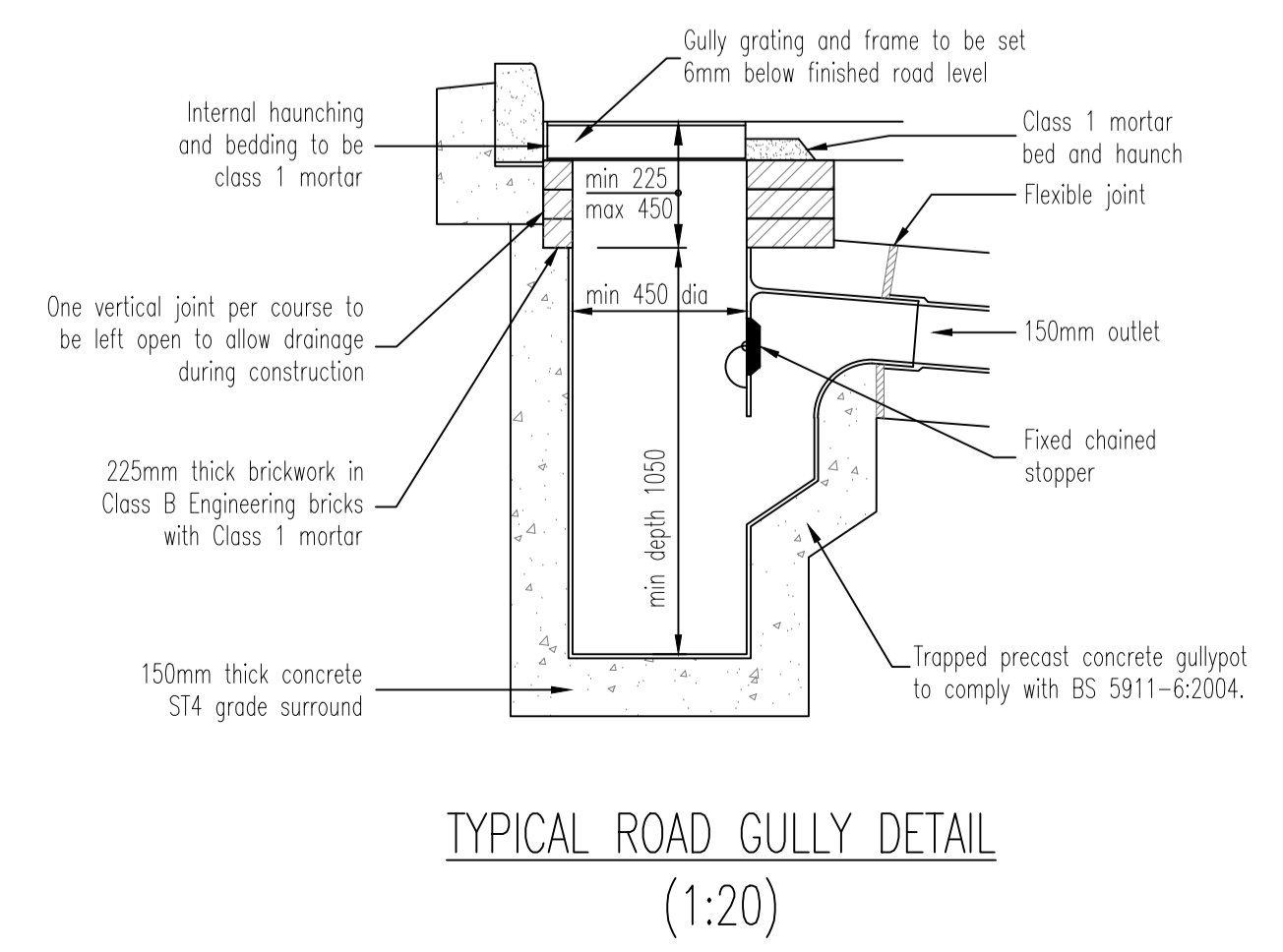
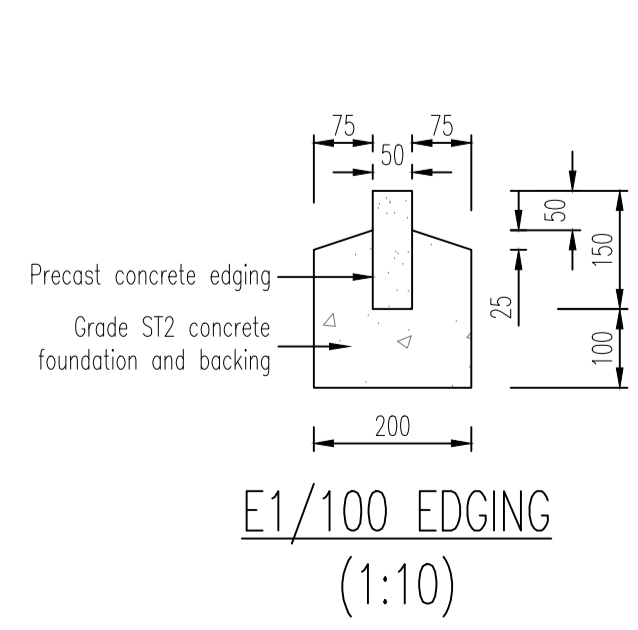
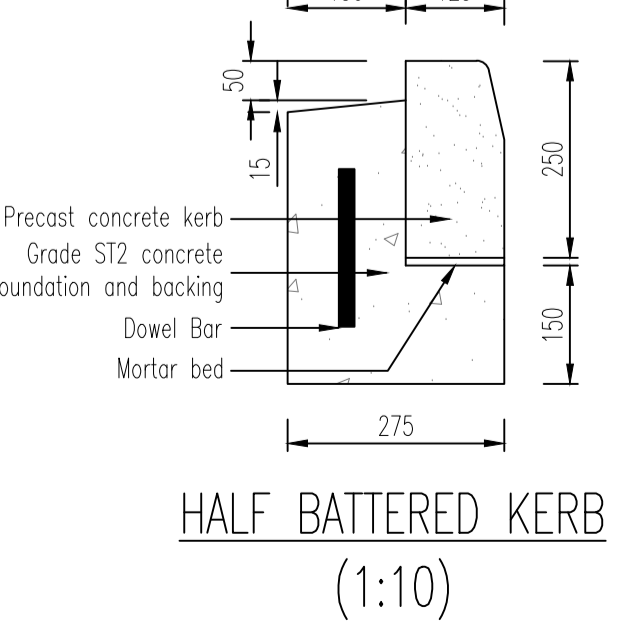
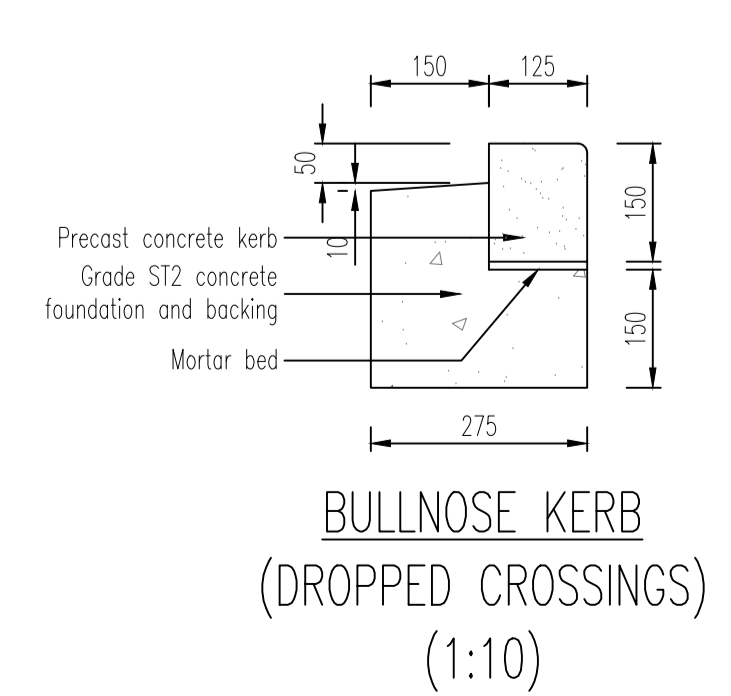
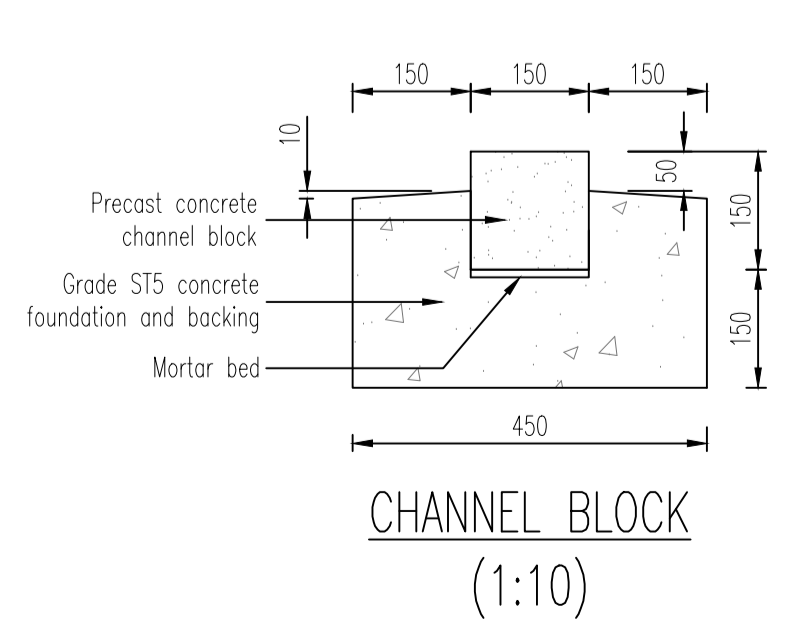
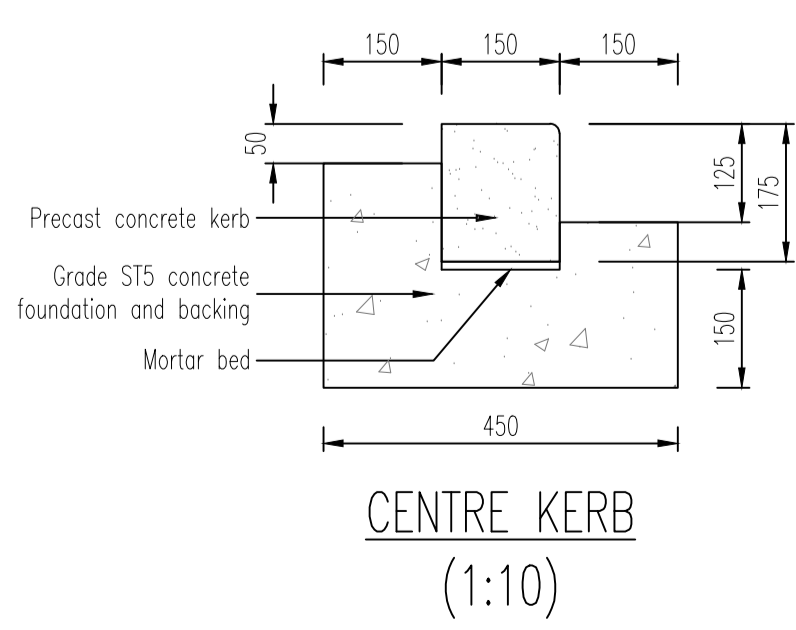


- N O T E S
- All highway works are to be constructed in accordance with the Kirklees Metropolitan Council Highways Standard Details.
 - All highway works are to be subject of a Section 38 Agreement of the Highways Act 1980.
 - All public sewers to be in accordance with "Code for Adoption". The Relevant British/European and Yorkshire Water's standards/Requirements/Addendum to the Mechanical and Electrical Specification and Kitemarked and together with any additional specific requirements of the drainage authority.
 - All public sewers are to be subject of a Section 104 Agreement of the Water Industry Act 1991. With the exception of highway only drainage.
 - Any coated base material in the carriageway left exposed for more than seven days to be sealed using bituminous sealing grit.
 - Highway boundary to be indicated by back edgings laid flush or change of material on private drives.
 - All vertical faces of joints involving flexible materials shall be treated with "oxy-bit" or other approved joint sealant. This includes ironwork and precast products. Overbanding shall not be accepted by Kirklees Metropolitan Council.
 - Any final surfacing to be discussed with Kirklees Metropolitan Council.
 - Unsealed and loose material such as crushed stone, gravel or pebbles is not acceptable to the adoptable highway.
 - Do not scale from this drawing.



CBR %	CBR %					
	<2.5	2.5 to 3.0	3.0 to 4.0	4.0 to 5.0	5.0 to 15.0	>15
Sub-base only	Sub-base (Type 1) depth	450	420	370	330	280*
Sub-base on capping	Sub-base (Type 1) depth	350	320	280*	280*	280*
	Capping depth	250	240	230	210	150

* Minimum required type 1 sub-base depth to achieve 450mm of non-frost susceptible material.



SUBJECT TO THE APPROVAL OF ALL RELEVANT AUTHORITIES

Rev	By	Date	Revision	Chk	Apvd
D	MD	25.02.25	Amended to Kirklees Council S38 comments	MD	MI
C	JC	23.09.24	Amended to Kirklees Council comments	MD	MI
B	BHB	02.02.22	Amended to suit section 38 comments	RJ	MI
A	MB	04.11.21	Amended to suit section 104 comments	MI	MI
/	RJ	19.04.21	Issued for approval		MI

ARP ASSOCIATES
Chartered Consulting Engineers

Northwest House • 5 & 6 Northwest Business Park • Servia Hill, Leeds • LS6 2QH
0113 245 8498 • 0113 244 3864 • Leeds@arpassociates.co.uk • www.arpassociates.co.uk
ARP Associates is a trading division of ARP Geotechnical Ltd, a company registered in England and Wales with company number 3771811, whose registered office is at 5/6 Northwest Business Park, Servia Hill, Leeds LS6 2QH

TITLE **TYPICAL HIGHWAY CONSTRUCTION DETAILS SHEET 1 OF 2**

PROJECT **PLANE STREET, HUDDERSFIELD**

CLIENT **UNITY HOUSING ASSOCIATION**

DRAWING STATUS **PRELIMINARY**

Scale	Date	Drawn
AS SHOWN @ A1	APR 21	RJ
		Chk. MI

Drg. No. **0257/02/04.01** Rev **D**