

Planning: Schedule Of Works To Discharge Conditions Ref: 2022/65/92204/E

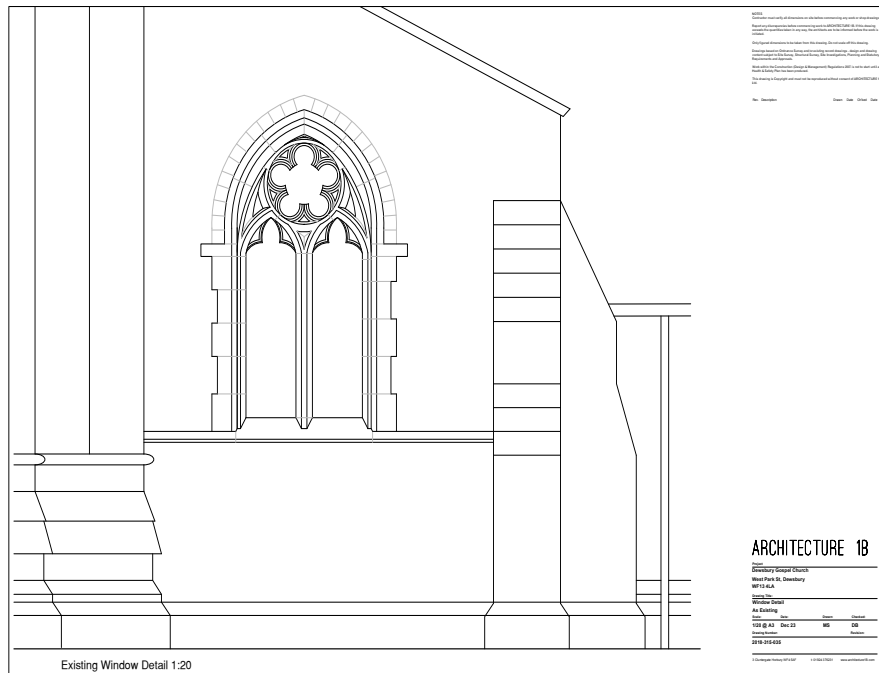
Conditions:

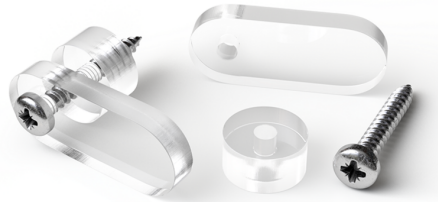
Condition 3:

Prior to development commencing, details of the new door opening in the western elevation shall be submitted to and approved in writing by the Local Planning Authority. The development shall be carried out in accordance with the approved details and thereafter retained.

Reason: In the interests of visual amenity and historic character and Policies LP24 and LP35 of the Kirklees Local Plan as well as the aims of Chapters 12 and 16 of the National Planning Policy Framework.

See attached **Appendix 001** – Existing Window Detail, which illustrates the existing window in the western elevation that will be altered. **Appendix 002** – Proposed Door Detail, which sets out the placement for the new door on the western elevation.





Condition 7:

Prior to development commencing, details of the internal porch to a scale of 1:10 or 1:20, shall be submitted to and approved in writing by the Local Planning Authority. The development shall be carried out in accordance with the approved details and thereafter retained.

Reason: In the interests of visual amenity and historic character and Policies LP24 and LP35 of the Kirklees Local Plan as well as the aims of Chapters 12 and 16 of the National Planning Policy Framework.

See attached **Appendix 003** –Proposed Ground Floor Plan, which sets out the proposed ground levels within the site, **Appendix 004** – Proposed Section E-E, which sets out the wall build up for the proposed internal porch at a scale of 1:20 **Appendix 005** – Proposed Internal Elevation, which sets out proposed internal plans within the site.

