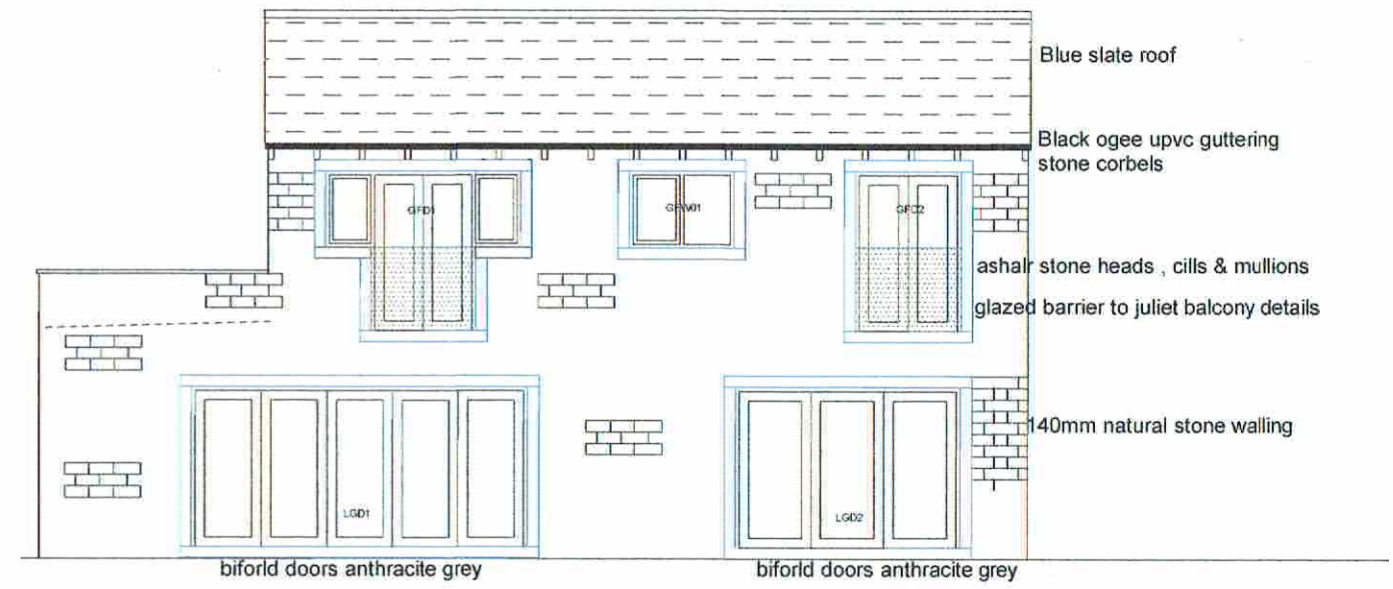


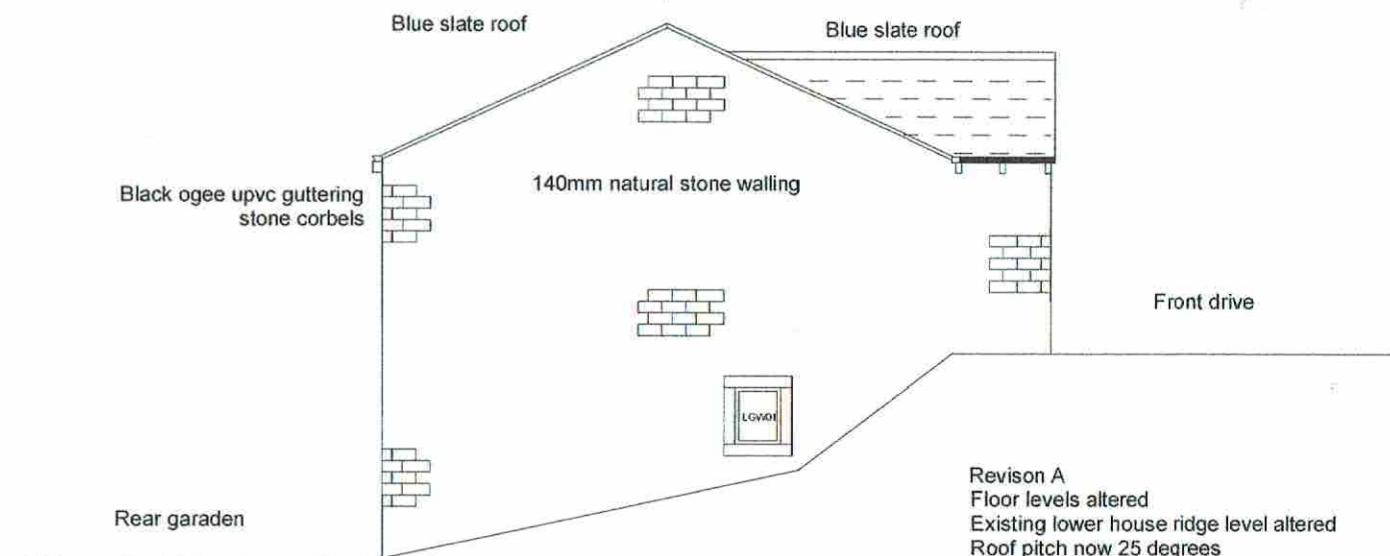
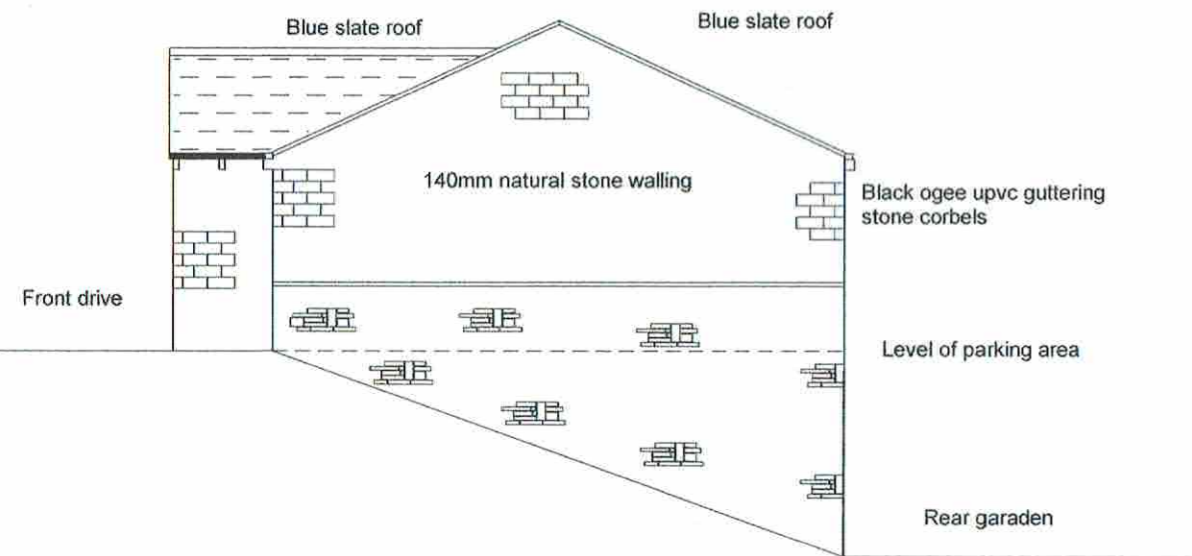


Front Elevation



Rear Elevation

DOOR & WINDOW SIZE SCHEDULE			
REF	WIDTH	HEIGHT	M2
LGD1	4.410m	2.100m	9.261m <sup>2</sup>
LGD2	3.000m	2.100m	6.300m <sup>2</sup>
LGW01	0.600m	0.750m	0.450m <sup>2</sup>
GFD1	2.580m	2.100m	5.418m <sup>2</sup>
GPW01	1.350m	0.750m	1.012m <sup>2</sup>
GFD2	1.360m	2.100m	2.856m <sup>2</sup>
GPW02	0.900m	0.750m	0.675m <sup>2</sup>
GFD3	1.800m	2.100m	3.78m <sup>2</sup>
GPW03	0.600m	0.750m	0.450m <sup>2</sup>
GPW04	0.600m	0.750m	0.450m <sup>2</sup>
TOTAL			30.717m <sup>2</sup>



Revision A  
 Floor levels altered  
 Existing lower house ridge level altered  
 Roof pitch now 25 degrees

Elevations to Proposed Dwelling		
Grounds of 42a Station Road		
Fenay Bridge		
HD8 0AD		
Date	Drawn by	Scale
Jan 24	BR 01 A	A3 - 1:100
Drawn By		