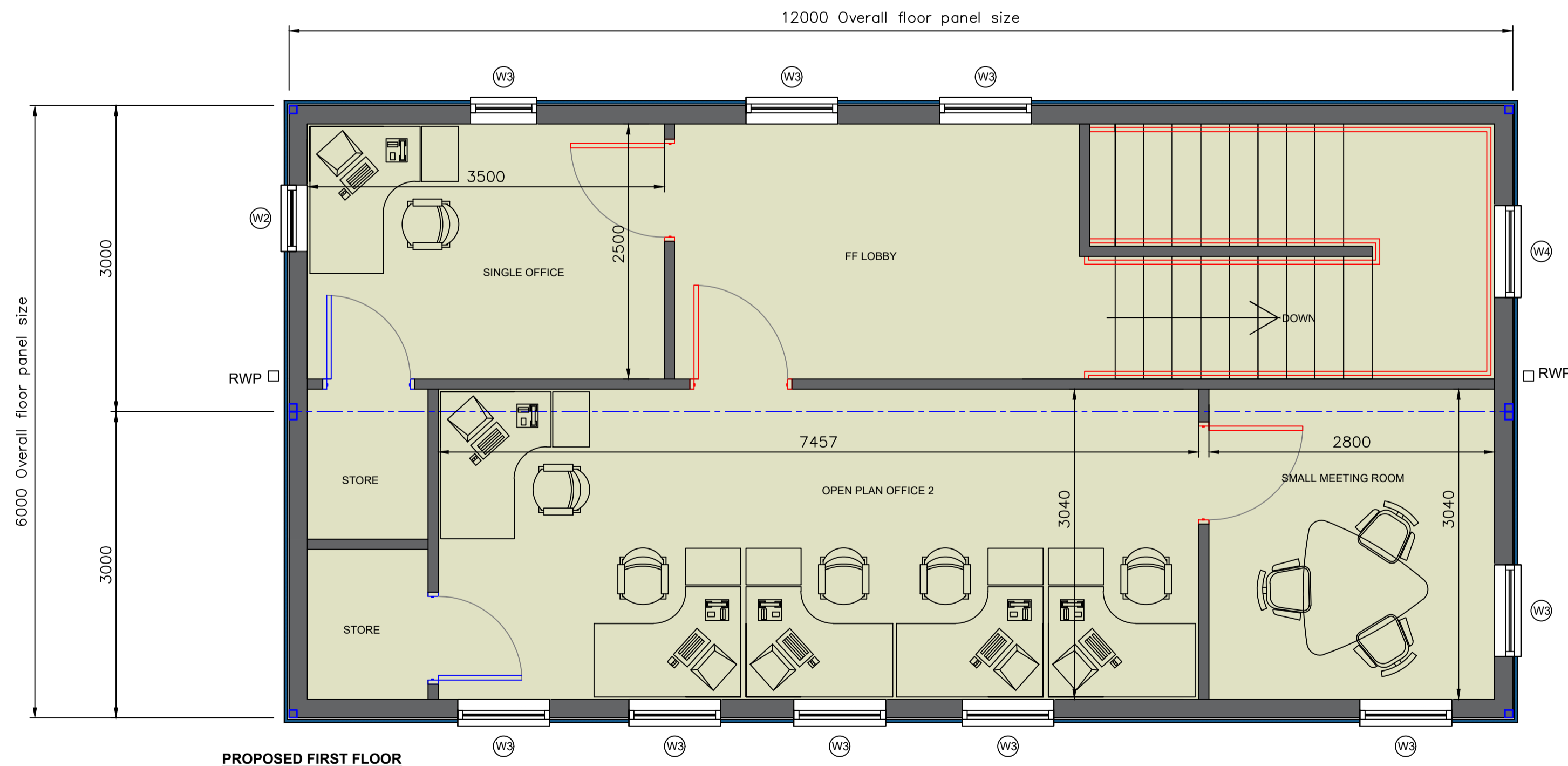
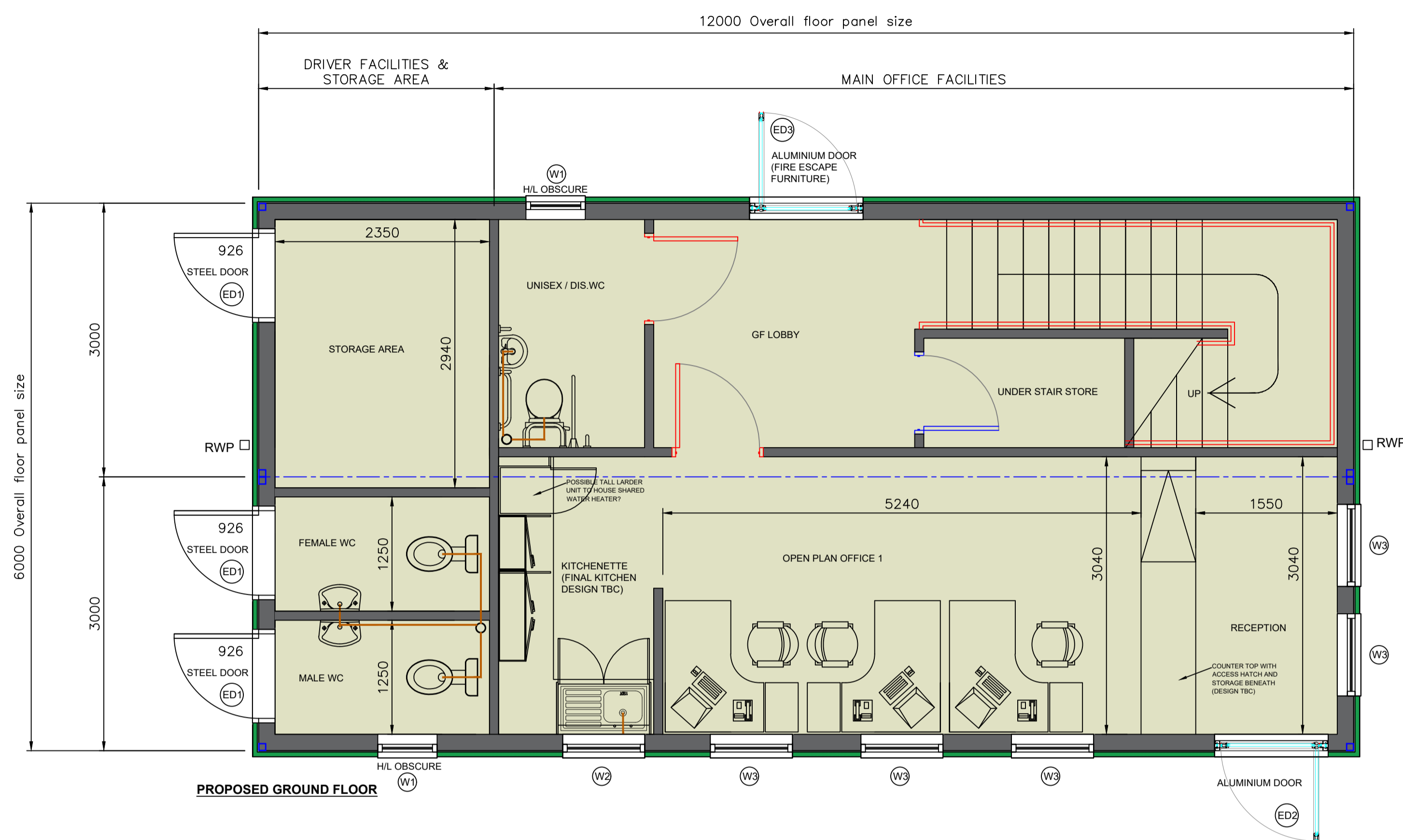


Notes



D	DWG UPDATED TO REFLECT COMMENTS FROM THE CLIENT. DRIVER TOILET FACILITIES AND SIZE OF STORAGE AREA AMENDED. POSITION OF RWP'S UPDATED TO WORK WITH REVISED FENESTRATION.	02.02.24	GB	GB
C	DWG UPDATED TO INCLUDE PROPOSED RENDER SYSTEM AND FIRST FLOOR CLADDING. WINDOW AND EXTERNAL DOOR REFS ADDED TO DWG. FENESTRATION ARRANGEMENT UPDATED.	02.02.24	GB	GB
B	DWG UPDATED TO REFLECT CLIENT COMMENTS. DRIVERS FACILITIES AMENDED. SHOWER AND CHANGING ROOM REMOVED AND SPACE REMODELLED TO SHOW SEPARATE MALE AND FEMALE TOILET FACILITIES AND STORAGE AREA - ALL WITH SEPARATE EXTERNAL ACCESS DOORS.	31.01.24	GB	GB
A	DWG UPDATED TO REFLECT CLIENT COMMENTS. BAY LENGTH EXTENDED TO ALLOW FOR INCLUSION OF SHOWER AND WC FACILITIES. GENERAL LAYOUT AMENDED TO SUIT.	10.01.24	GB	GB

Rev	Description	Date	Dr by	Ap by
Original by	GB			



MPH Building Systems Ltd Telephone: 01484 430518
 Hoyers Industrial Estate
 517 Leeds Road,
 Huddersfield, Email: info@mphbuildingsystems.co.uk
 HD2 1YJ Website: www.mphbuildingsystems.co.uk

Client
ELITE TRANSPORT

Project
PROPOSED MODULAR TRANSPORT OFFICE & DRIVER SHOWER FACILITY.

Drawing
PROPOSED PLAN LAYOUT

Scale	NTS	Date	10.01.24
Issue status	P Preliminary	Rev	C P
Project / Drawing Number	E10630-01		
Issue status	C Construction	This dwg is to be read in conjunction with all related dwgs. Do not scale from this dwg. All dimensions must be checked and verified on site before commencing any work or producing shop dwg. The originator should be notified immediately of any discrepancy.	
Issue status	B As Built	This dwg is copyright and remains the property of MPH Building Systems.	