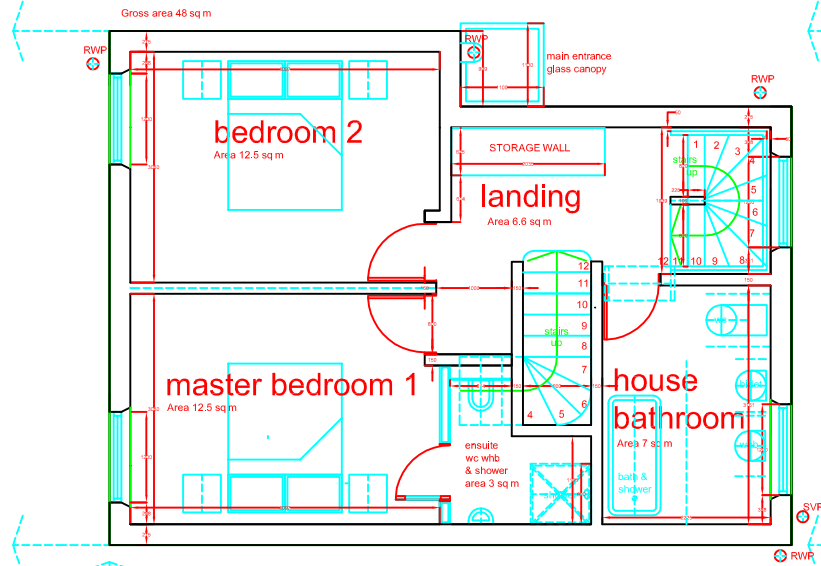
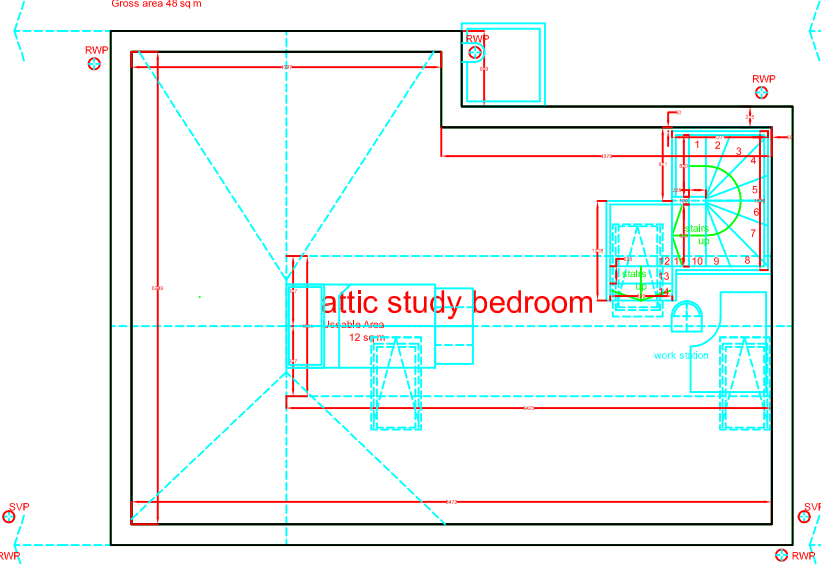


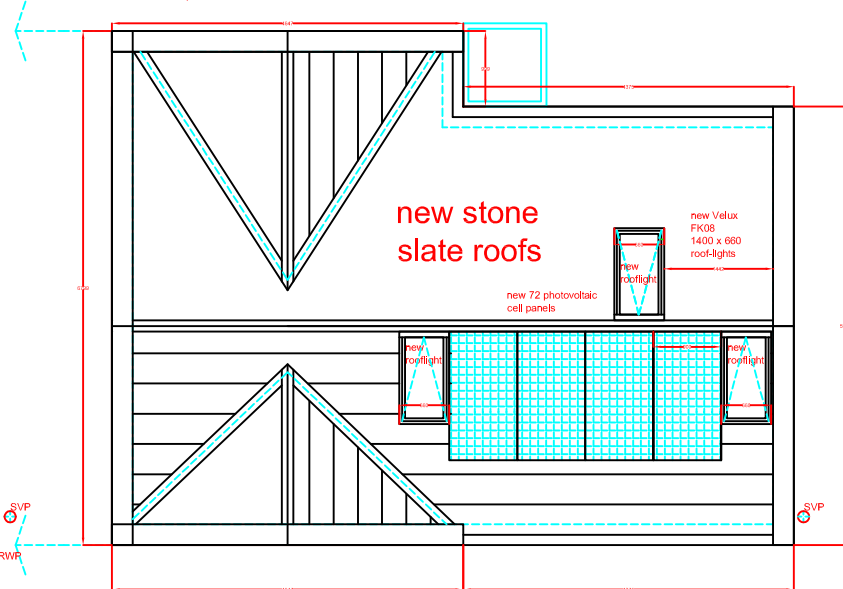
new house no. 11A First floor plan



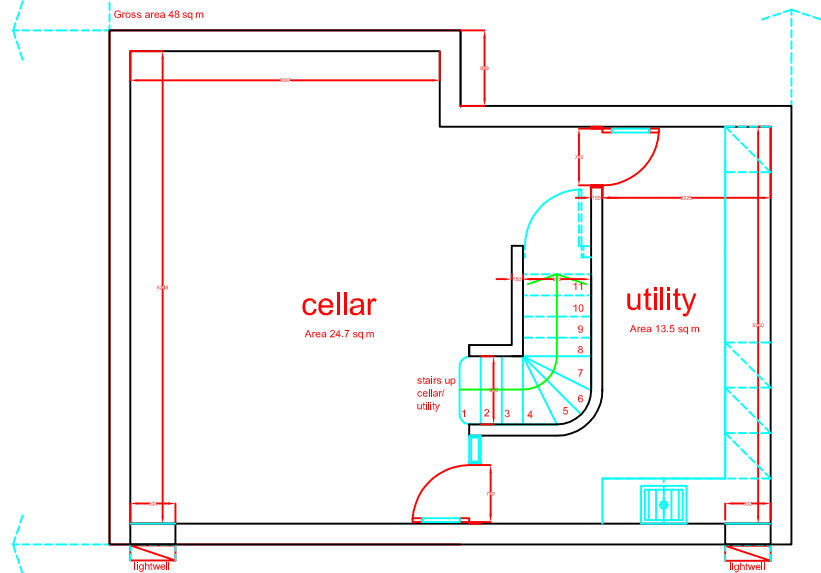
new house no. 11A Attic plan



new house no. 11A Roof plan



new house no. 11A Cellar plan



Residential Development  
 @ 11 Station Road, Skelmanthorpe, Huddersfield, West Yorkshire HD8 9AU  
 Proposed new house 11 A Station Road  
 Cellar, First , Attic & Roof Plans - Drawing no. Pmrca QH11A-02 Revision A  
 Scale 1:100



new house no. 11A materials

- |   |   |   |
|---|---|---|
| <p><b>ROOF:</b><br/>                 Main House - natural Yorkshire stone slate roofing.<br/>                 Anthracite colour proprietary double glazed roof-lights.</p> <p><b>WALLS:</b><br/>                 Main House externally - coursed natural Yorkshire stone.<br/>                 Natural Yorkshire stone heads, jambs mullions and sills.</p> | <p><b>WINDOWS:</b><br/>                 Anthracite timber windows clear double glazed, vertically sliding sashes, side hung opening lights, fixed lights and bottom hung wet room and bathroom windows opaque double glazed.</p> <p><b>DOORS:</b><br/>                 Front entrance door - Anthracite painted l/w frame and 5 paneled l/w door with clear glazed fanlight over.<br/>                 Rear entrance door - Clear glazed anthracite timber sliding doors and frame.</p> | <p><b>ABOVE GROUND DRAINAGE:</b><br/>                 Soil vent pipe - cast iron finish anthracite.<br/>                 Gutters - timber finish anthracite supported on projecting natural Yorkshire stone plain corbels.<br/>                 Down-pipes cast iron anthracite finish.</p> |
|---|---|---|