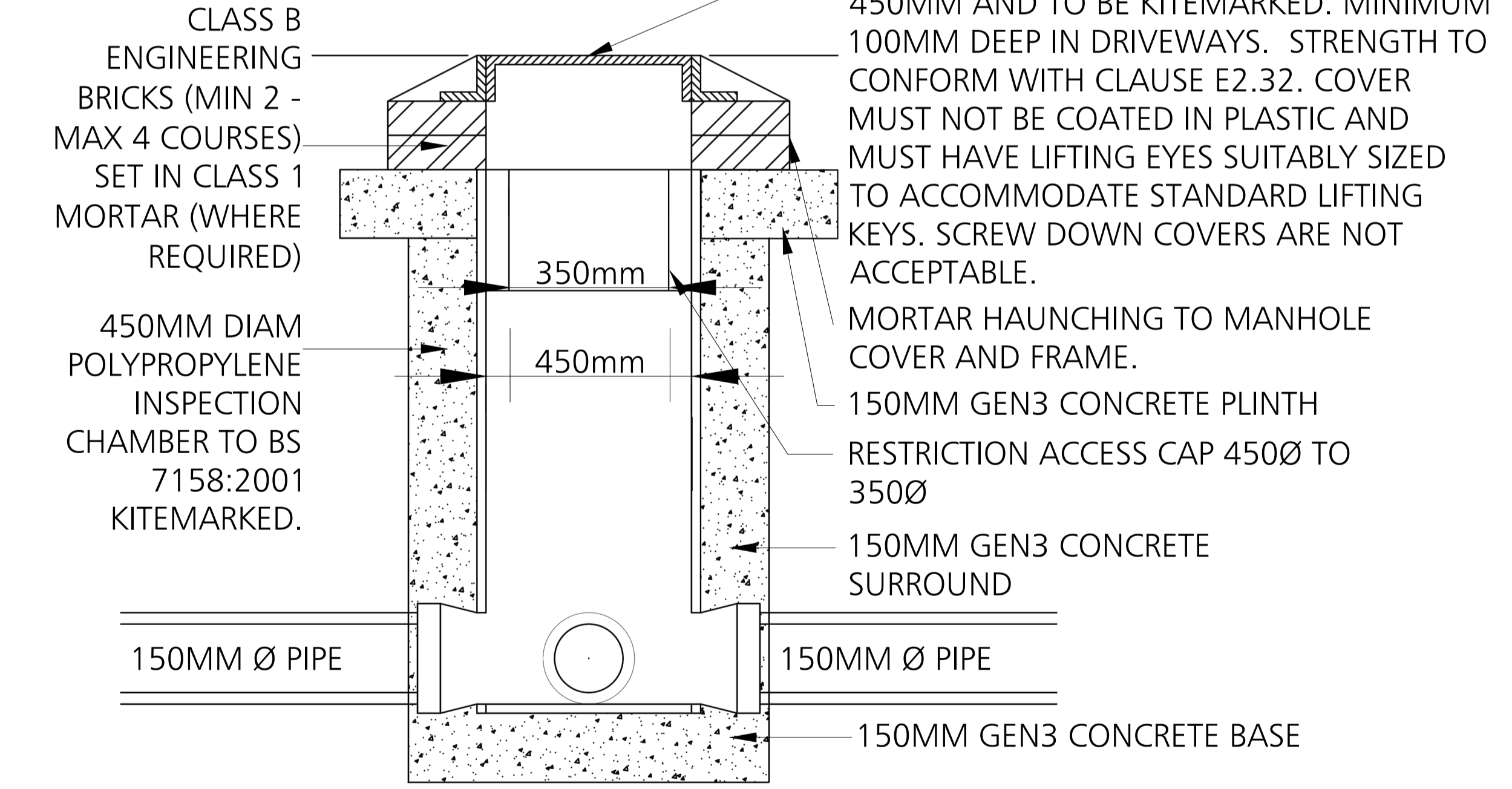
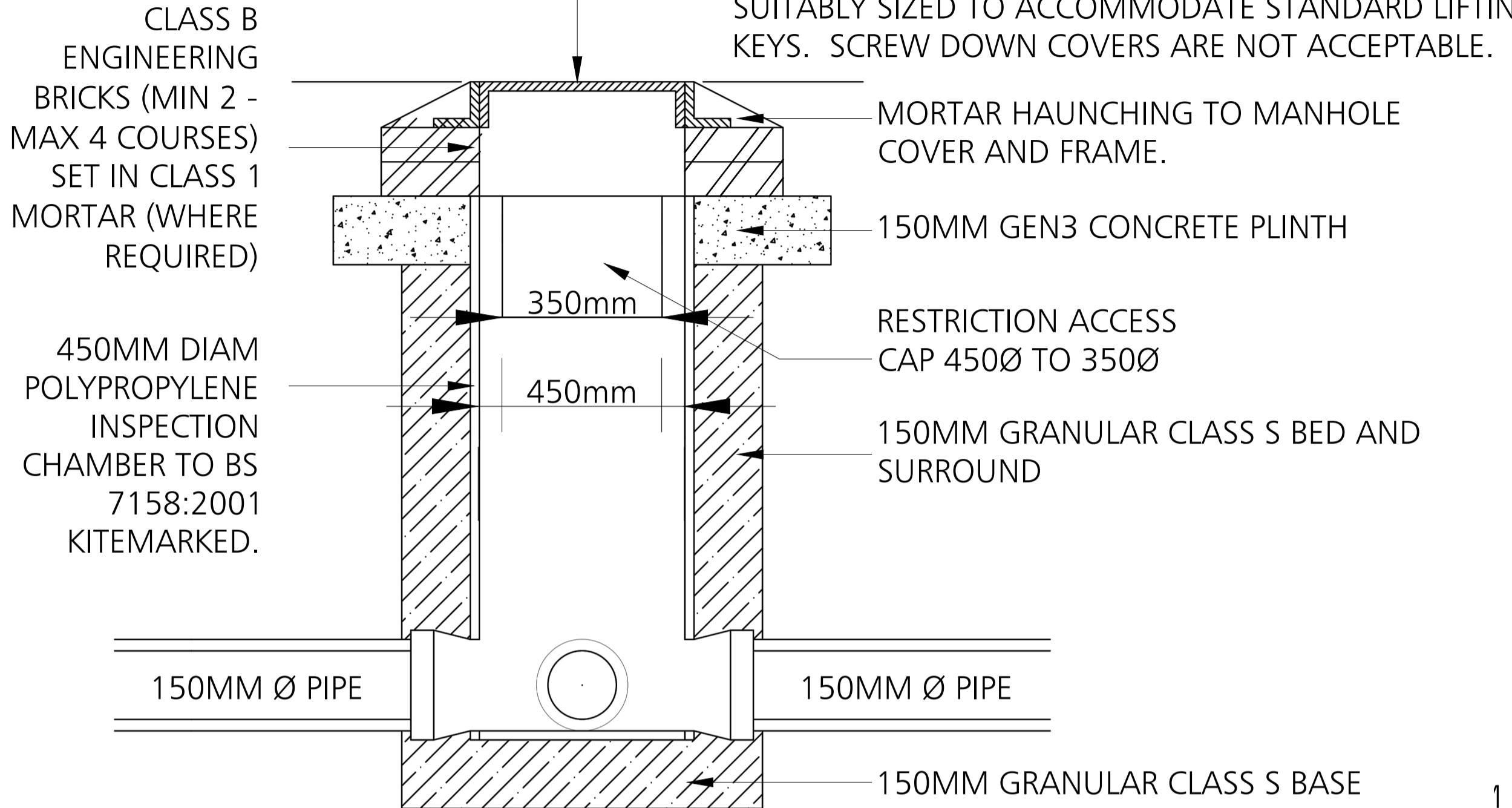


H-3-264-956

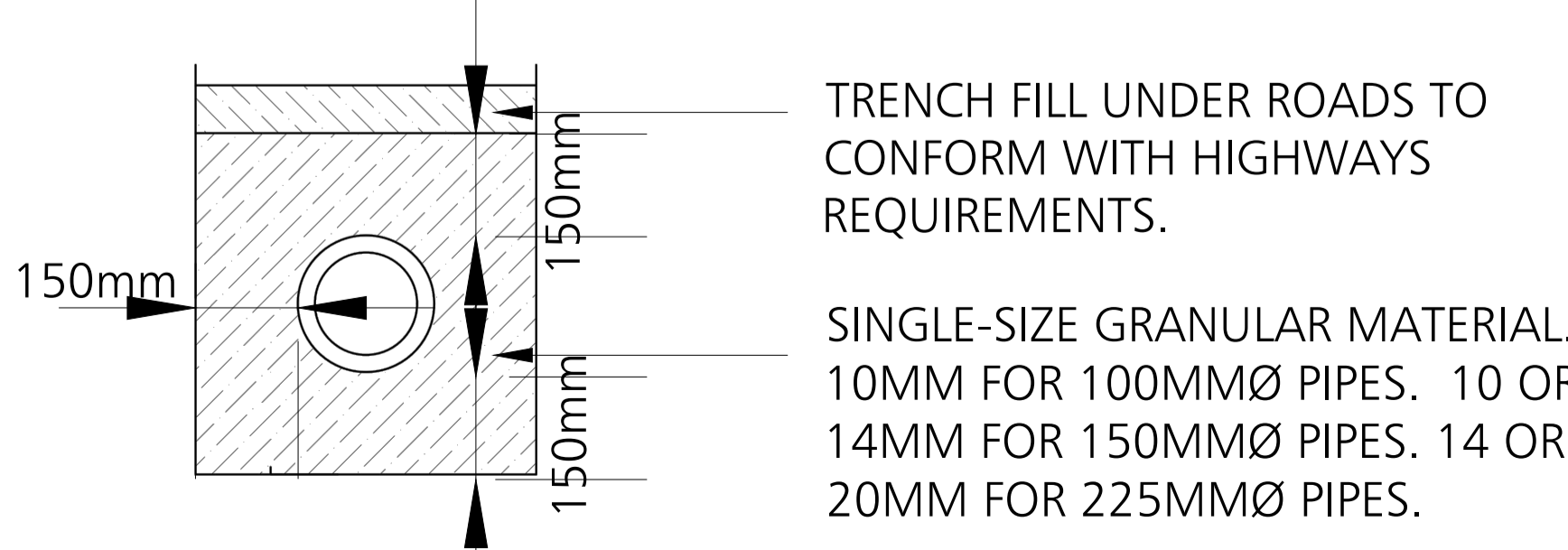
DEMARCATON CHAMBER LOCATED IN GARDENS DETAIL

DEPTH FROM COVER LEVEL TO INVERT LEVEL OF PIPE CHAMBER GREATER THAN 1200MM (MAXIMUM DEPTH 2000MM). MAXIMUM LATERAL DRAIN DIAMETER 150MM

DUCTILE IRON B125 COVER AND FRAME TO HAVE MAXIMUM OPENING OF 450MM X 450MM AND TO BE KITEMARKED. STRENGTH TO CONFORM WITH CLAUSE E2.32. COVER MUST NOT BE COATED IN PLASTIC AND MUST HAVE LIFTING EYES SUITABLY SIZED TO ACCOMMODATE STANDARD LIFTING KEYS. SCREW DOWN COVERS ARE NOT ACCEPTABLE.



LATERAL DRAIN BEDDING DETAIL

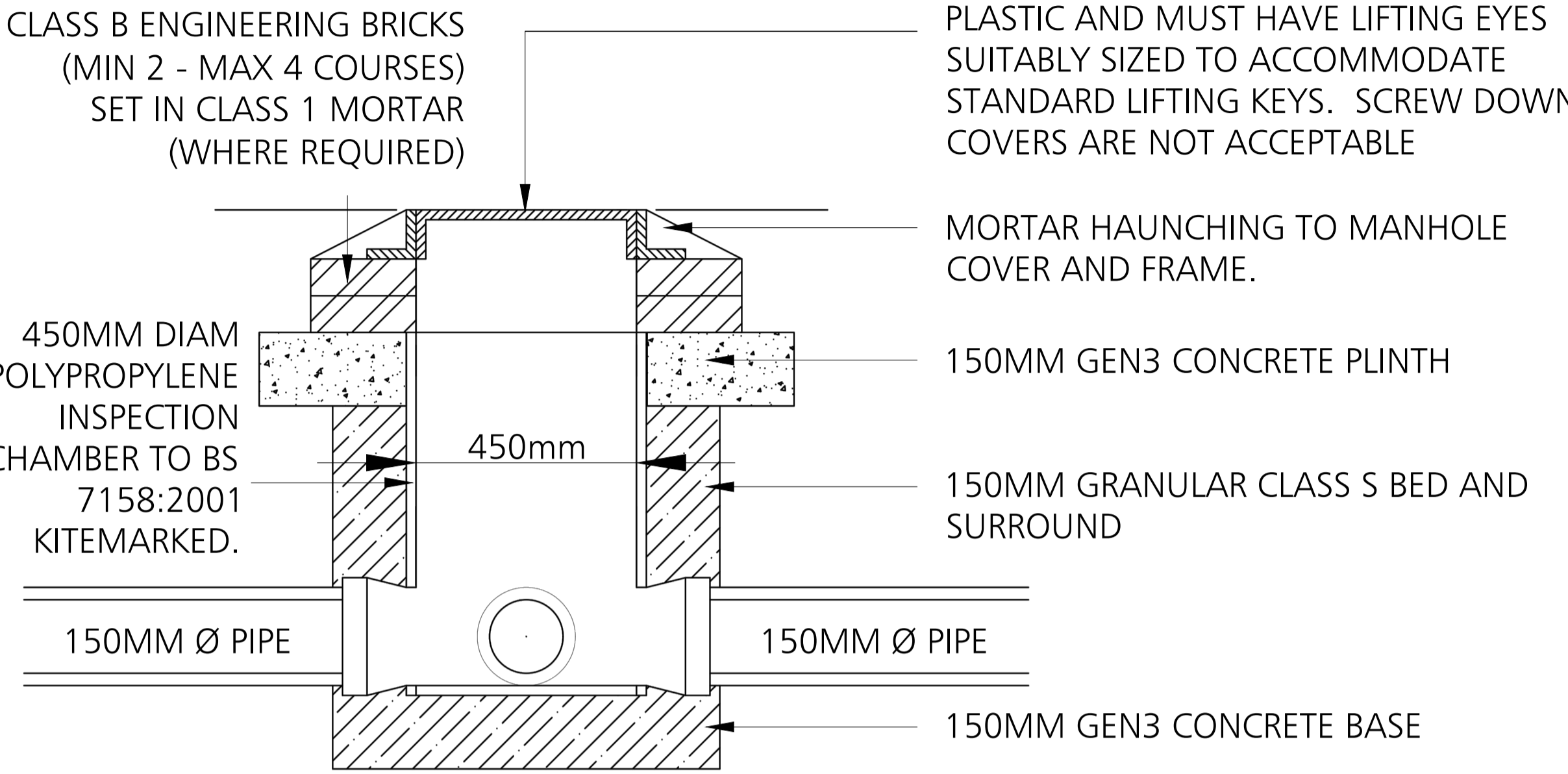


PIPES		
DIAMETER (mm)	GRADIENT	GRADIENT
	FOUL	S.W.
100	1:80	-
150	1:80	1:80

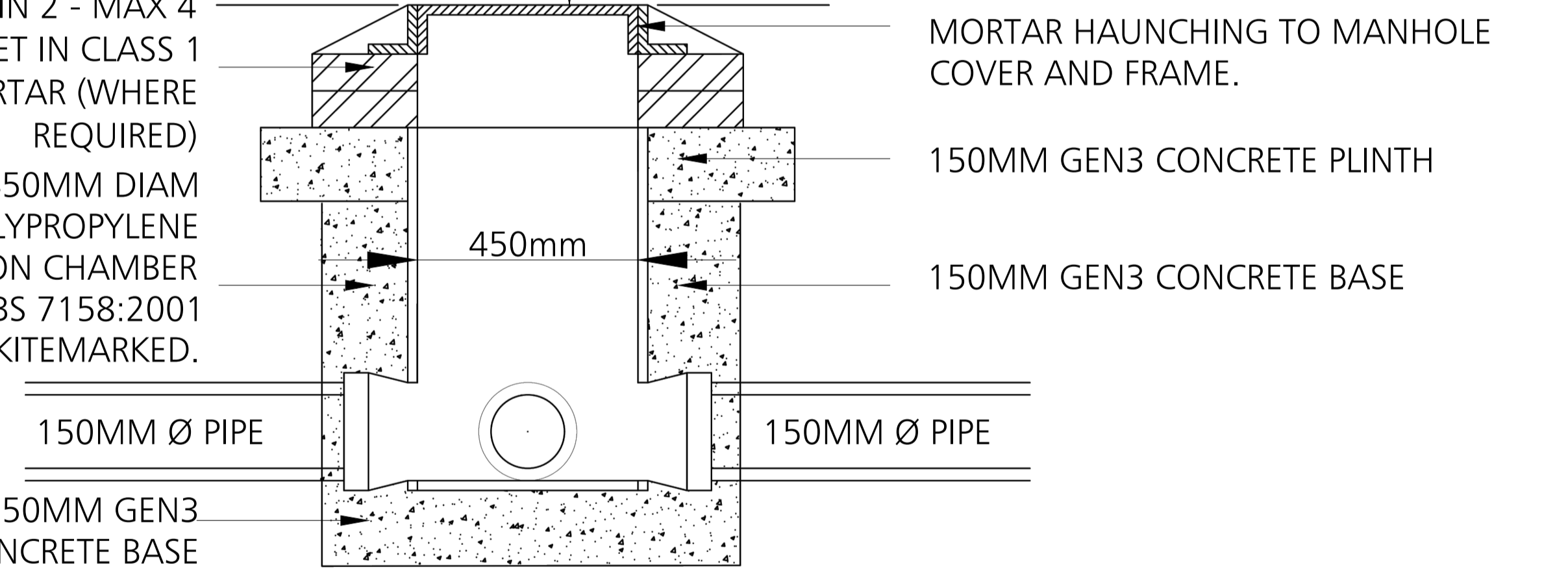
DEMARCATON CHAMBER LOCATED IN GARDENS DETAIL

DEPTH FROM COVER LEVEL TO INVERT LEVEL OF PIPE CHAMBER LESS THAN 1200MM. MAXIMUM LATERAL DRAIN DIAMETER 150MM

DUCTILE IRON B125 COVER AND FRAME TO HAVE MAXIMUM OPENING OF 450MM X 450MM AND TO BE KITEMARKED. STRENGTH TO CONFORM WITH CLAUSE E2.32. COVER MUST NOT BE COATED IN PLASTIC AND MUST HAVE LIFTING EYES SUITABLY SIZED TO ACCOMMODATE STANDARD LIFTING KEYS. SCREW DOWN COVERS ARE NOT ACCEPTABLE



DUCTILE IRON B125 COVER AND FRAME TO HAVE MAXIMUM OPENING OF 450MM X 450MM AND TO BE KITEMARKED. MINIMUM 100MM DEEP IN DRIVEWAYS. STRENGTH TO CONFORM WITH CLAUSE E2.32. COVER MUST NOT BE COATED IN PLASTIC AND MUST HAVE LIFTING EYES SUITABLY SIZED TO ACCOMMODATE STANDARD LIFTING KEYS. SCREW DOWN COVERS ARE NOT ACCEPTABLE.



CLASS B ENGINEERING BRICKS (MIN 2 - MAX 4 COURSES) SET IN CLASS 1 MORTAR (WHERE REQUIRED) 450MM DIAM POLYPROPYLENE INSPECTION CHAMBER TO BS 7158:2001 KITEMARKED.

VITRIFIED CLAY PIPES TO BS EN 295 KITEMARKED. UNPLASTICISED PVC PIPES TO BS 4660:200 & BS EN 1401-1 KITEMARKED. STRUCTURED WALL UNPLASTICISED PVC PIPES TO WIS 4-35-01 KITEMARKED.

MINIMUM DEPTH OF LATERAL DRAINS	
LOCATION	MINIMUM DEPTH (m)
GARDENS	0.9
AGRICULTURAL/OPEN SPACES	0.9
DRIVEWAYS	1.2 (SEE DETAIL)

DEMARCATON CHAMBER COVERS & FRAMES		
SURFACE	CLASS (LOADING IN kN)	LOADING
ROAD	D400	VEHICLE IMPACT
FOOTWAY & DRIVEWAY	B125	OCCASIONAL VEHICLE LOADING
GARDENS	B125	PEDESTRIAN/CYCLIST

DESIGNERS HAZARD IDENTIFICATION

IT IS ASSUMED THAT ALL WORKS WILL BE UNDERTAKEN BY A COMPETENT CONTRACTOR WORKING, WHERE APPROPRIATE, TO AN APPROVED METHOD STATEMENT. IN ADDITION TO THE HAZARDS TYPICALLY ASSOCIATED WITH THE TYPES OF CONSTRUCTION DETAILED ON THIS DRAWING, ANY KNOWN ABNORMAL HAZARDS SPECIFIC TO THIS DRAWING HAVE BEEN IDENTIFIED.

ABNORMAL HAZARD REFERENCE

- NOTES
- YORKSHIRE WATER GENERAL NOTES
- ALL ADOPTABLE SEWER WORKS AND MATERIAL TO BE IN ACCORDANCE WITH SEWERAGE SECTOR GUIDANCE DESIGN AND CONSTRUCTION GUIDANCE (CODE FOR ADOPTION). THE RELEVANT BRITISH/EUROPEAN AND YORKSHIRE WATER'S STANDARDS/REQUIREMENTS/LOCAL PRACTICE FOR THE ADOPTION OF SMALL SUBMERSIBLE FOUL AND SURFACE WATER PUMPING STATIONS AND KITEMARKED.
 - MANHOLE COVERS SHALL/MUST HAVE A CLEAR OPENING OF 600MM AND SHALL BE CLASS D400 TO BS EN 124 WITH 150MM DEEP FRAMES IN HIGHWAYS.
 - FILLED GROUND MUST BE FILLED AND CONSOLIDATED UNDER THE SUPERVISION AND TO THE SATISFACTION OF YORKSHIRE WATER BEFORE ANY SEWER WORKS ARE CARRIED OUT.
 - YORKSHIRE WATER IS NOT OBLIGED TO ACCEPT FILTER DRAIN/LAND DRAINAGE RUN-OFF INTO THE PUBLIC SEWER NETWORK OR ADOPTABLE DRAINAGE SYSTEM (DIRECTLY OR INDIRECTLY). AN ALTERNATIVE METHOD OF DISPOSAL OF THE LAND DRAINAGE RUN-OFF WILL THEREFORE BE REQUIRED AND YOU WILL HAVE TO LIAISE WITH THE LOCAL AUTHORITY, LAND DRAINAGE SECTION WITH REGARD TO THE DISPOSAL OF THE FILTER DRAIN/LAND DRAINAGE RUN-OFF.
 - THE ADOPTABLE SEWERS SHOULD BE A MINIMUM OF 1M AND MANHOLES 0.5M FROM KERB FACES AND SERVICE MARGINS.
 - SEWERS MUST HAVE 5 METRES CLEARANCE FROM TREES AND HEDGES OR THE WIDTH OF THE CANOPY AT MATURE HEIGHT.
 - SEWERS TO BE LAID IN CLASS "S" BEDDING (150MM GRANULAR BED AND SURROUND). WHERE DEPTH OF COVER TO TOP OF THE SEWER IS LESS THAN 1.2M IN HIGHWAYS AND VERGES (OR LESS THAN 900MM IN NON-VEHICULAR ACCESS AREAS) THEN A CONCRETE SLAB SHOULD BE PROVIDED ABOVE GRANULAR BED AND SURROUND.
 - BEDDING AND BACKFILL MATERIAL TO CONFORM TO THE REQUIREMENT OF WATER INDUSTRY SPECIFICATION 4-08-02 (TABLE A2).
 - YORKSHIRE WATER POLICY IS THAT TYPE "C" BRICK MANHOLES AND 1050MM DIA. MANHOLE RINGS ARE NOT PREFERRED. INSTEAD IT IS PREFERRED THAT YOU USE A TYPE "B" MANHOLE WITH 1200MM DIA OR 1500MM DIA RINGS, WITH THE OPENING SITED OVER THE CHANNEL WHERE DEPTH OF COVER TO PIPE SOFFIT IS 1 - 1.5M.
 - ADOPTABLE PLASTIC SEWER PIPES TO BE BS1 KITEMARKED (CERTIFIED TO WIS 4-35-01 AND BS EN 13476). ADOPTABLE PLASTIC SEWER PIPES TO BE LAID IN MAXIMUM 3 METRE LENGTHS UNLESS THERE IS A SPECIFIC OPERATIONAL NEED TO LAY LONGER LENGTHS. PLASTIC CHANNEL SECTIONS IN MANHOLES ARE NOT ACCEPTABLE AND YORKSHIRE WATER WOULD PREFER CLAYWARE CHANNEL IN MANHOLES.
 - THE MINIMUM CRUSHING STRENGTH FOR CLAY PIPES SHOULD BE AS FOLLOWS: 100MM DIA. 40kN/M, 150MM DIA. 40kN/M, 225MM DIA. 45kN/M AND 300MM DIA. 72kN/M. THE MINIMUM CRUSHING STRENGTH FOR CONCRETE PIPES SHOULD BE: (CLASS 120 TO EN 1916/BS5911-1 2002). PLASTIC PIPES SHOULD CONFORM TO WIS 4-35-01 AND BS EN 13476.
 - WHERE A B125 COVER AND FRAME HAS BEEN APPROVED, THIS MUST NOT BE COATED IN PLASTIC AND MUST HAVE LIFTING EYES SUITABLY SIZED TO ACCOMMODATE STANDARD LIFTING KEYS. SCREW DOWN COVERS ARE NOT ACCEPTABLE.
 - THERE MUST BE ENOUGH CLEARANCE AT CROSSOVERS TO ACCOMMODATE BEDDING TO BOTH PIPES, APPROX. 300MM. IF CROSSOVER IS NEAR THE ROCKER THEN THE CLEARANCE NEEDED MAY NEED TO BE INCREASED.

Date	Revision	By	Chkd	Ref
12.09.23	UPDATED TO SUIT TAA COMMENTS	OB	JA	P4
07.06.23	UPDATED TO SUIT S38 COMMENTS	MDJ	PD	P3
25.04.23	UPDATED TO SUIT S104 COMMENTS	MDJ	PD	P2
27.01.23	PRELIMINARY ISSUE	SM	MJ	P1

dudleys
Structural & Civil Consultants

Tithe House
35 Town Street, Horsforth
Leeds, LS18 5LJ
Tel: 0113 258 3611
e-mail: info@dudleys.co.uk

Project
LOVELL HOMES
SAVILLE ROAD
SKELMANTHORPE
Title
DRAINAGE CONSTRUCTION
DETAILS SHEET 3

Scale 1/10	Drawn SM	Checked MJ
Date JAN'23	Status PRELIMINARY	
Job No. 21374	Dr. No. 127	Rev. P4