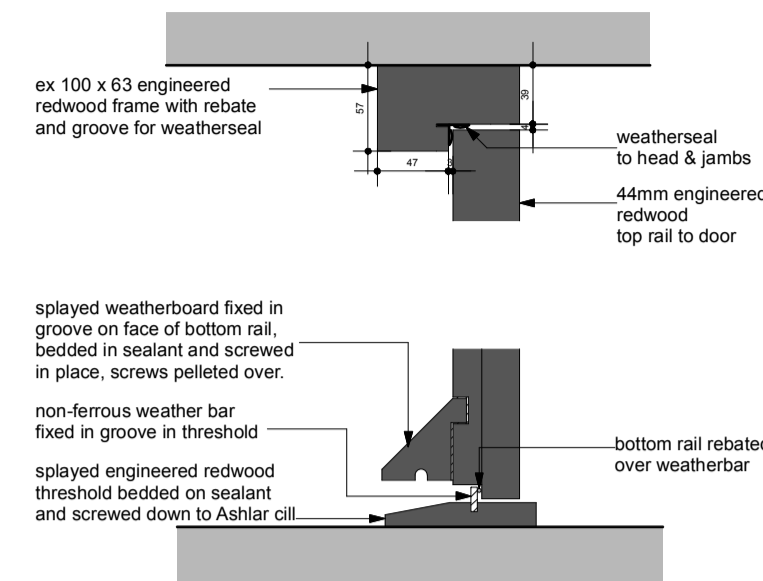
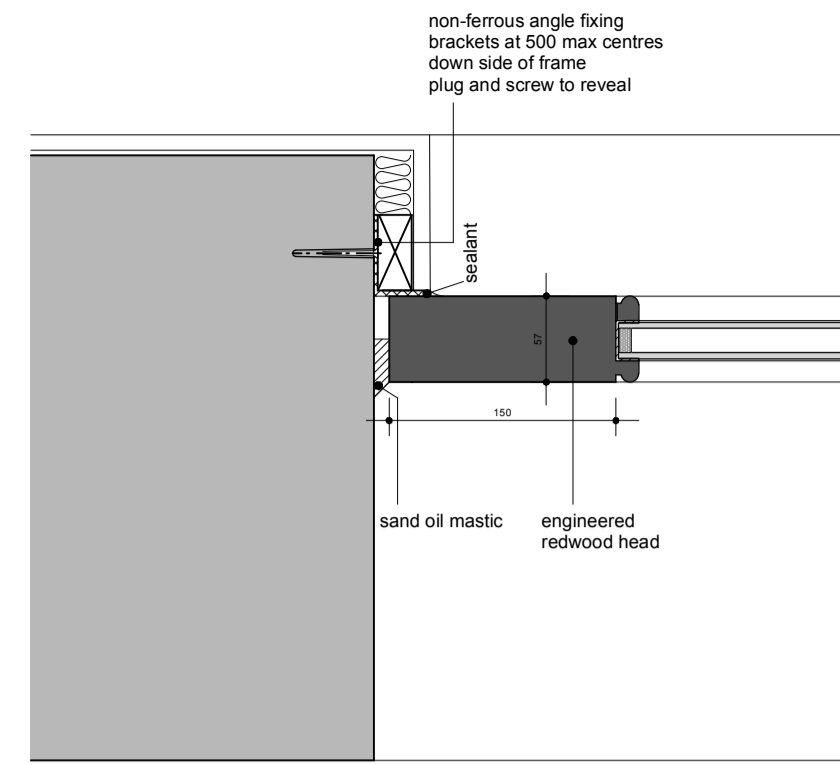


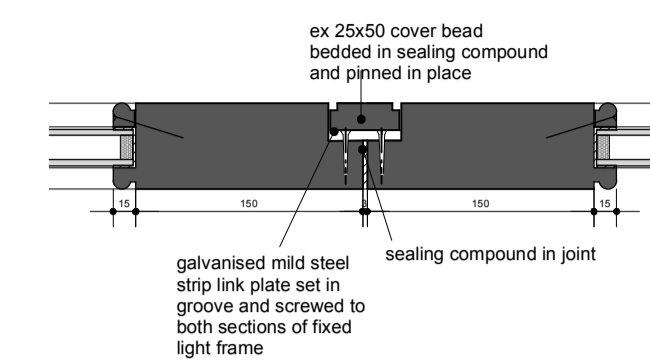
boarded door detail
scale 1:5



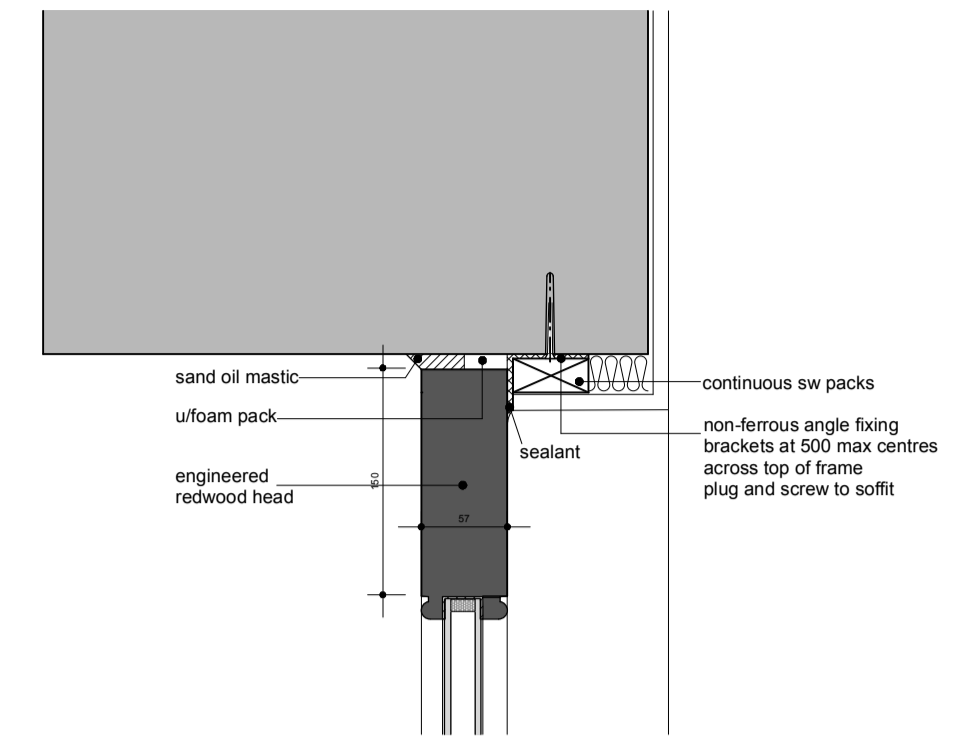
door head and cill details
scale 1:5



barn screen jamb detail
scale 1:5



dummy meeting stile detail
scale 1:5



barn screen head and cill details
scale 1:5

general specification for doors

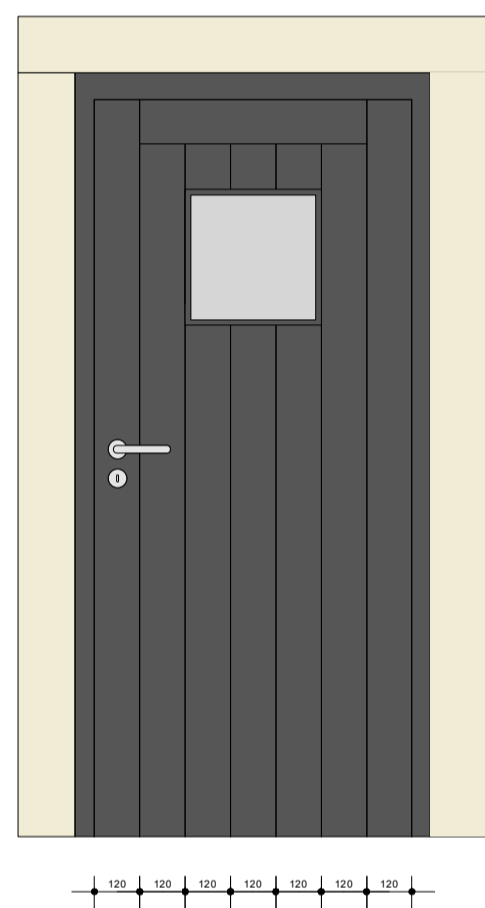
Framed and boarded timber door in rebated weather stripped frame finished internally and externally with Teknos 3 coat finish

Material: Engineered redwood

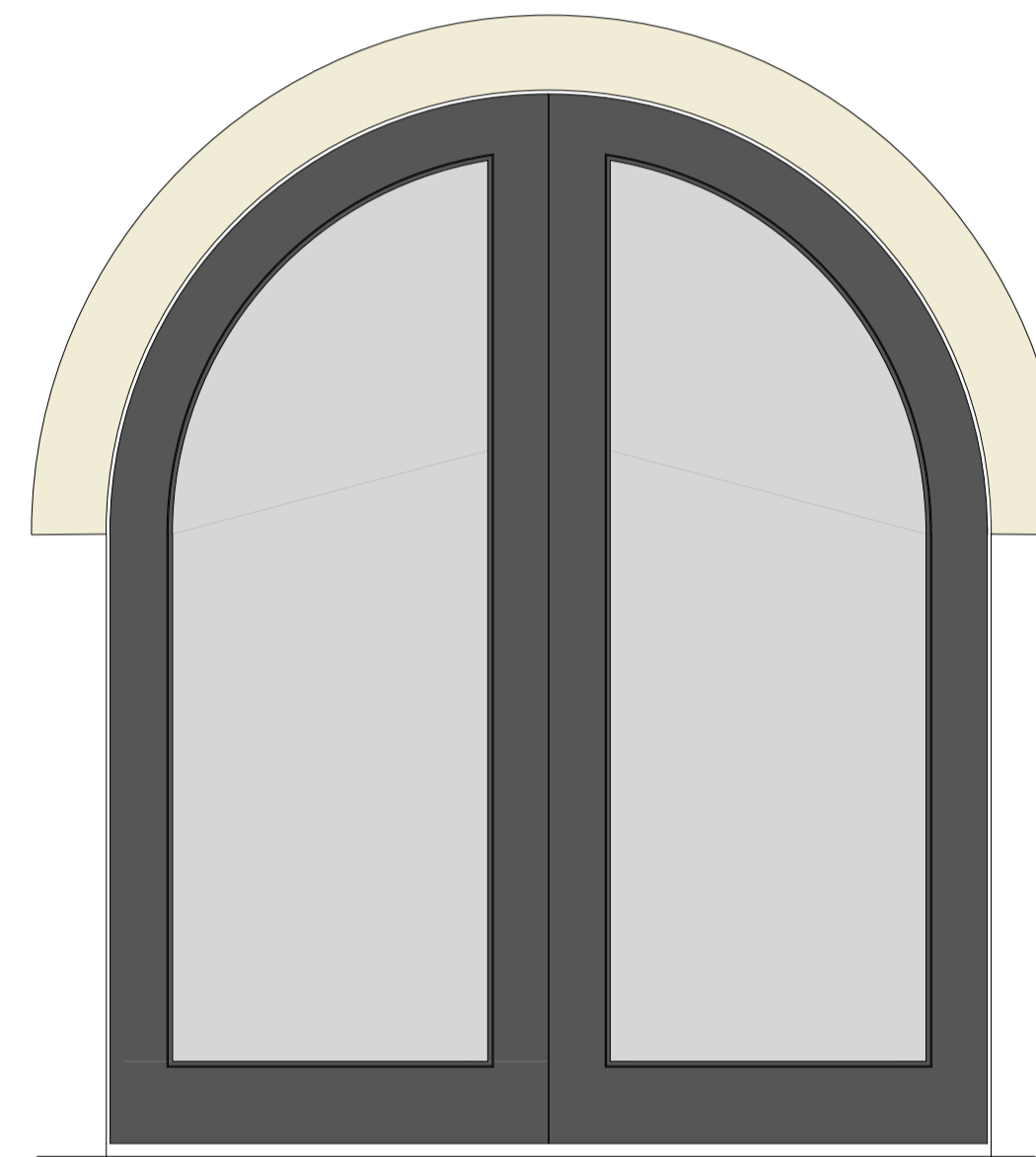
door size: TBC on site

Bottom edge of the door rebated over patent combined weather bar and draft seal fixed into groove in oak threshold

Ironmongery to be fitted in shop, pair of satin finish steel lever handles and key hole escutcheon to Employer choice, 1.5 pairs 100mm stainless steel ball bearing hinges, mortice latch with high security euro double cylinder lock key.



typical external door elevation
all units entrance door and unit 21/23 and the barn rear entrance door
scale 1:20



typical external barn screen elevation
the barn unit
scale 1:20

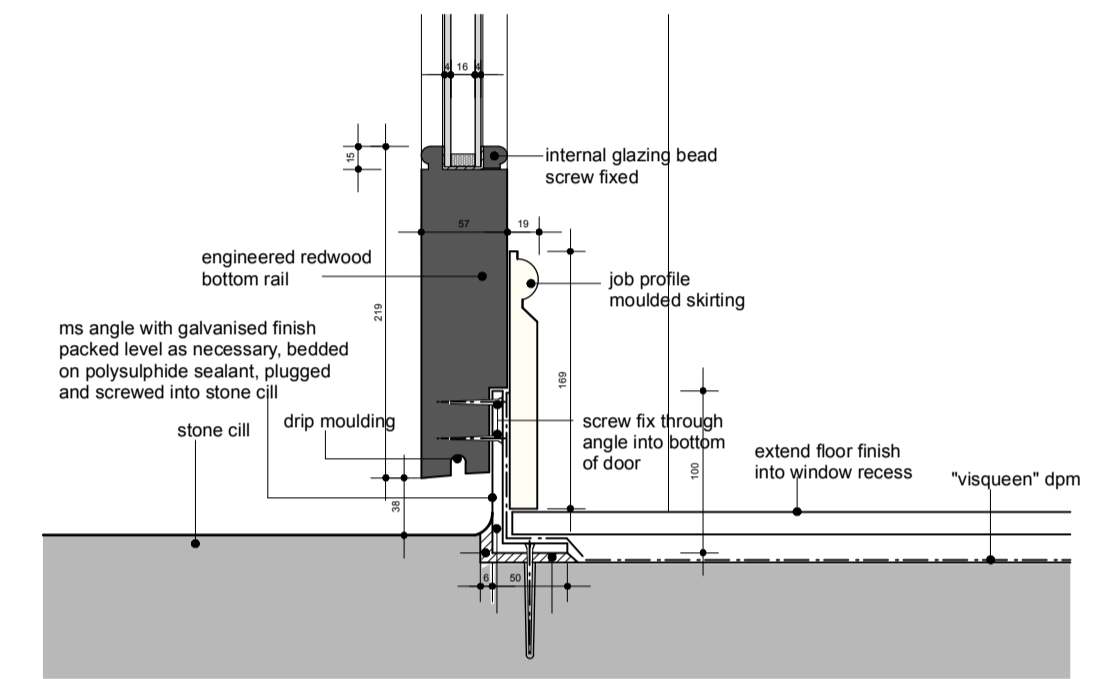
general specification for barn screen & french doors

Timber Type: Engineered Redwood.

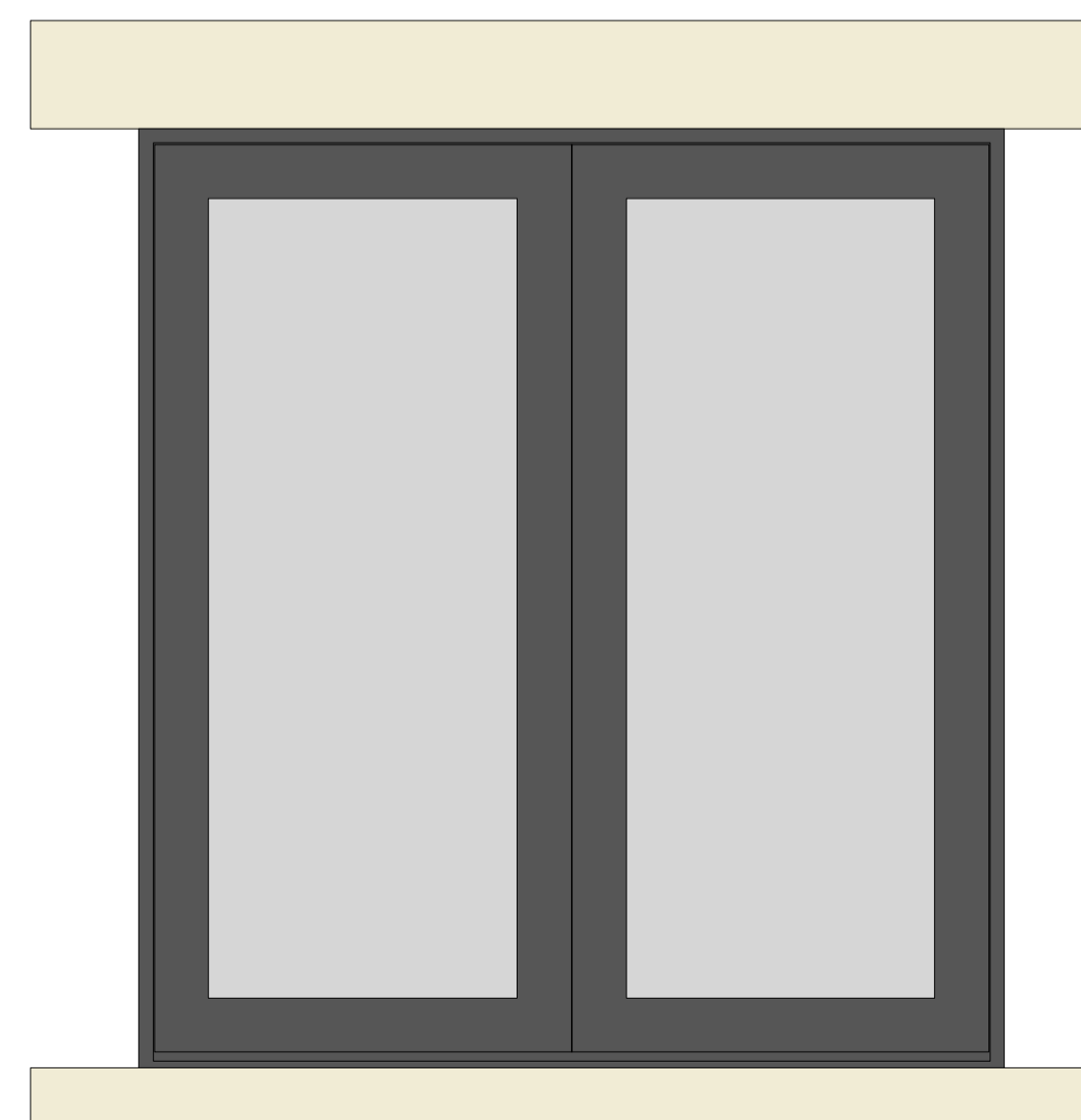
Colour: External: Black, Internal: White

Glazing: 24mm unit, 4mm toughened low E - 16mm Duplex spacer in black - 4mm toughened, Argon fill

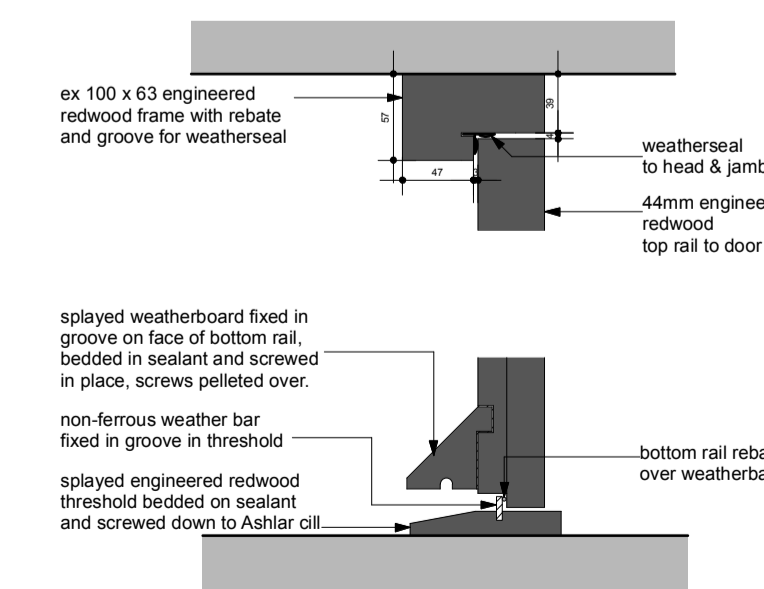
U-value: 1.6w/m2K



barn screen head and cill details
scale 1:5



typical external french door elevation
the barn unit
scale 1:20



french door head and cill details
scale 1:5

This drawing has been prepared specifically for the purpose of obtaining Planning Permission and/or Building Regulation Approval. Its suitability for other purposes, without supplementary details and specifications cannot be guaranteed. The Permissions and/or Approvals are beyond the Architects control, and no guarantee that such will be given or to be inferred by reason of the preparation of this drawing. Only figured dimensions are to be used. All dimensions to be checked on site. This drawing together with the design is the property and copyright of the Architect and must not be reproduced without prior written permission.

P02	Barn door screens details updated, to Conservation Officers comments	21.03.24	NG	NG
P01	Drawing originated	11.12.23	NG	NG
rev.	description	date	drawn	approved



project **Extension and Refurbishment of 4 Dwellings**
at **21-23, 25 & 27 Round Ings Road, Outlane, Huddersfield, HD3 3FQ**
for **Cameo Developments Ltd**

title **Door Details**
number **23038D-05-P02**
scale **1:20 and 1:5**
size **A1**

ARCHITECTURE + DESIGN PARTNERSHIP

The Old Police Station 16 Bridge Lane Holmfirth HD9 7AN
T: 01484 685411 E: hello@adp-architects.com
W: www.adp-architects.com

RIBA Chartered Practice