

University of Huddersfield Health and Wellbeing Academy

.....
Landscape Design and Access Statement

University of
HUDDERSFIELD
Inspiring tomorrow's professionals

GILLESPIES

CONTENTS

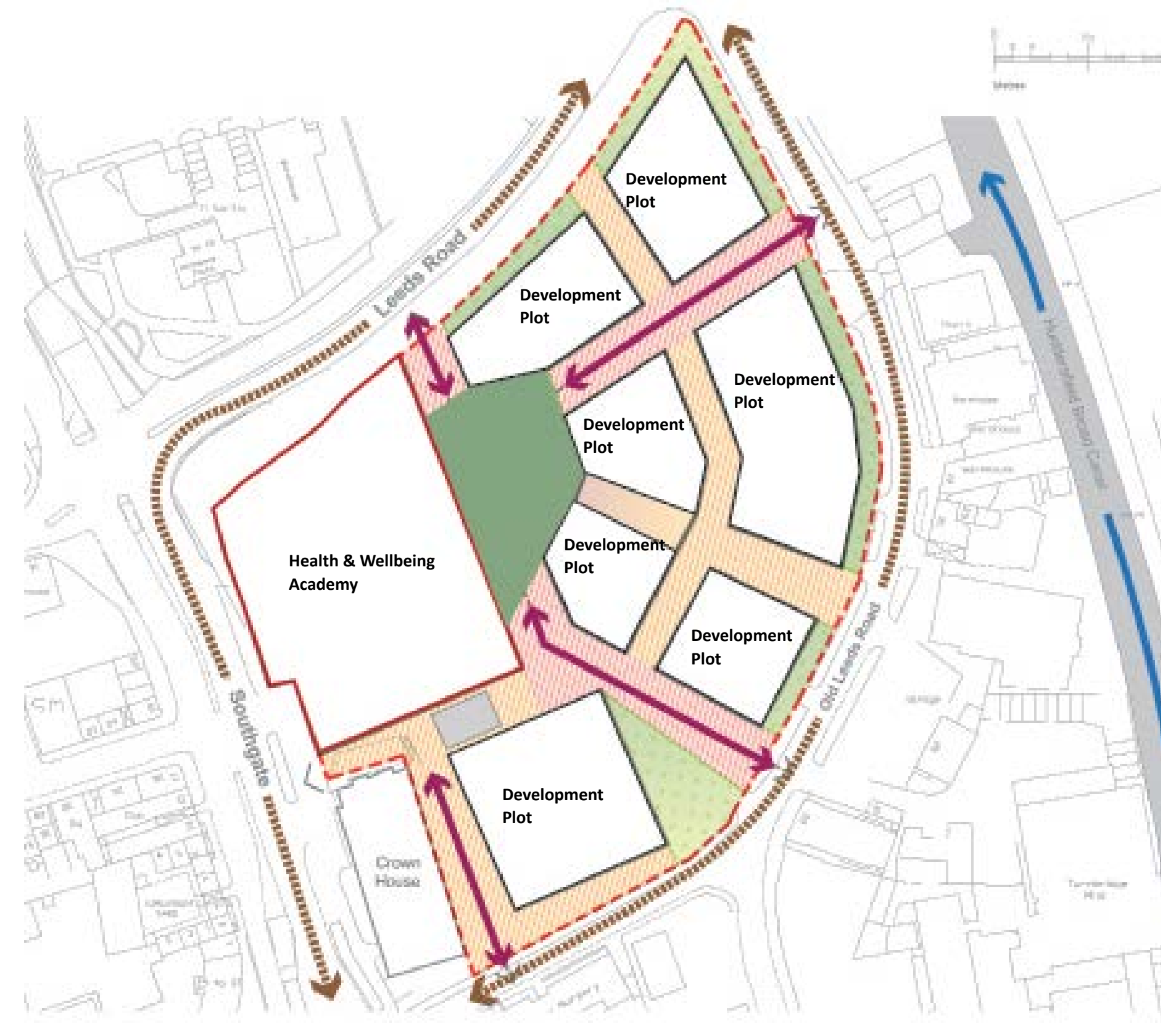
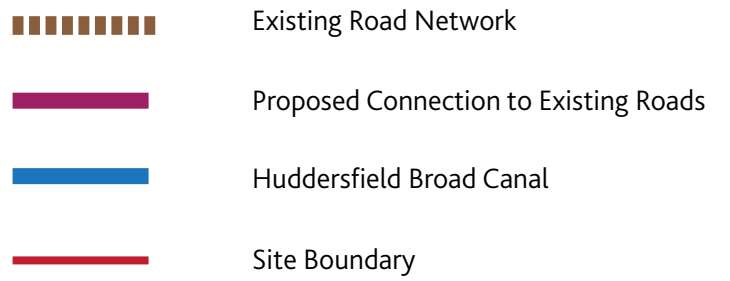
- 1 WIDER CONTEXT
- 2 ACCESS AND MOVEMENT STRATEGY
- 3 LANDSCAPE PROPOSALS
- 4 MAIN ENTRANCE / SIMBULANCE AREA
- 5 LIGHTING STRATEGY
- 6 HARD LANDSCAPE MATERIALS AND FINISHES
- 7 SOFT LANDSCAPE SPECIFICATION
- 8 SHRUBS AND HERBACEOUS PLANTING
- 9 SENSORY / EDIBLE PLANTING

REVISION NO:	ISSUE DATE:	PREPARED BY:	APPROVED BY:
P02	14/04/2022	RK	WC
P03	29/05/2024	RK	WC

WIDER CONTEXT



- Site sits in a prominent location with close proximity to the Huddersfield Broad Canal.
- Southgate and Old Leeds roads serve as the main access roads for the site.
- The central public realm area is intended to tie future development plots and the UoH Health & Wellbeing Academy together.

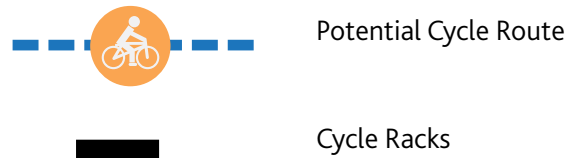


ACCESS AND MOVEMENT STRATEGY

FIRE TENDER MOVEMENT - INDICATIVE

- The 3.6m wide ramped path facilitates fire tender movement within site.
- Pine Street can serve as the potential access / egress routes for the site.





KEY CONSTRAINTS

- Steep slope and narrow open areas towards north
- Fire tender access around building considering the level difference within and around the site
- Sensitive design to reflect health and well being considerations
- Controlled access to the sprinkler tank and other utility areas
- Placement of temporary and permanent structures
- Design considering masterplan with surrounding future development

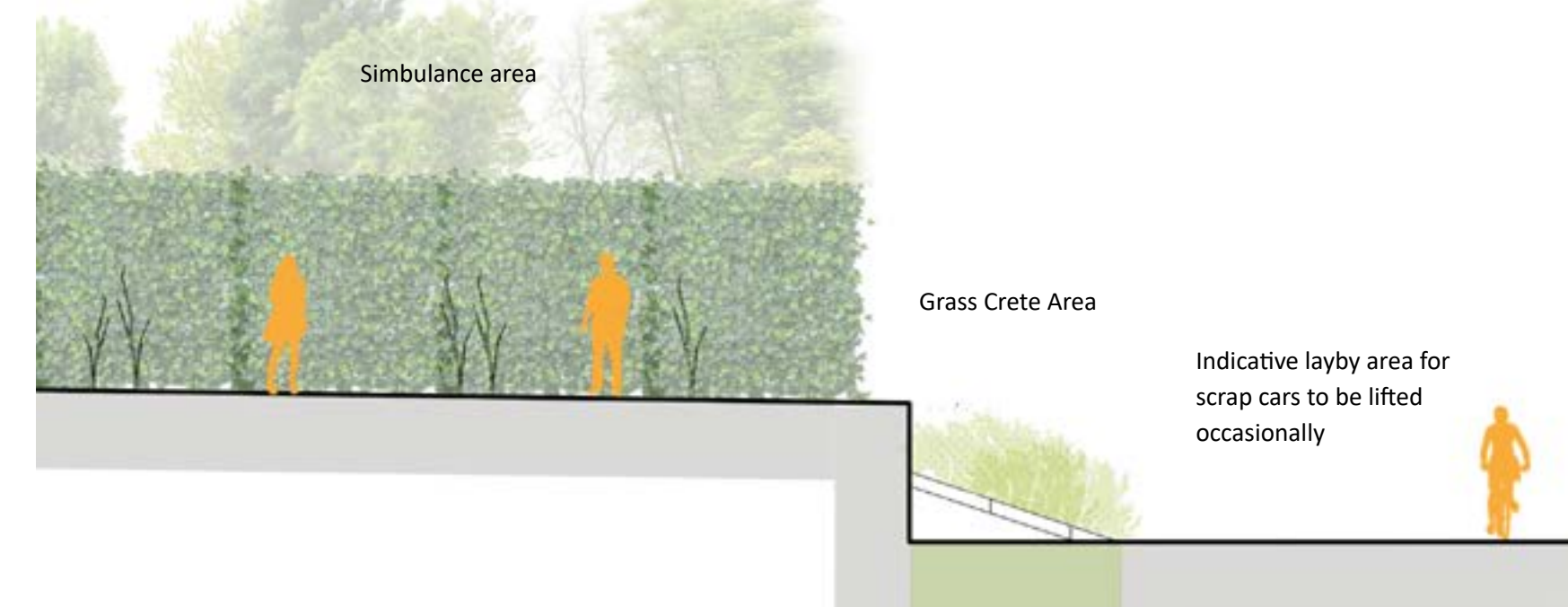
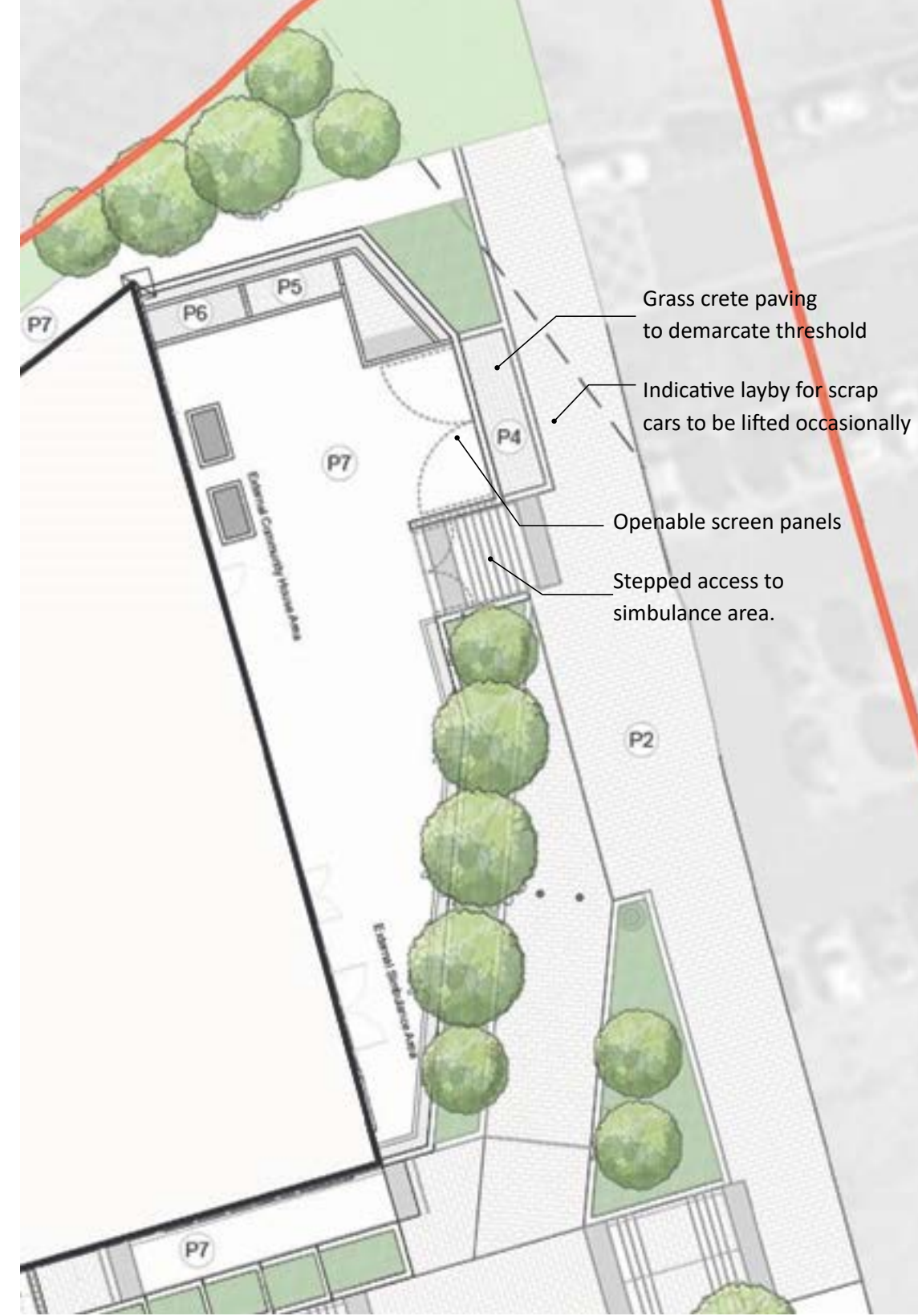
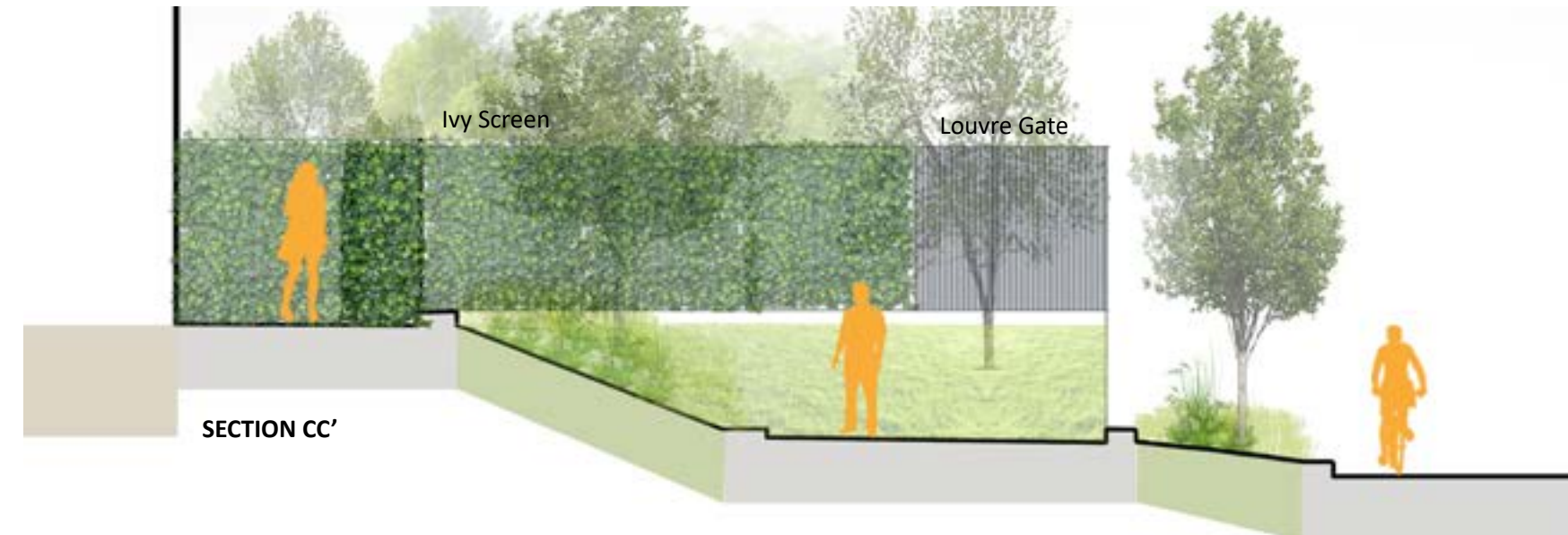
LANDSCAPE DESIGN STRATEGY

- Wide ramped access relating to building and desire lines.
- Integrated seating orientated to overlook green lawns and future public realm development
- Ramp and steps providing access to main building and utility areas with adequate health and safety measures
- Strategic screening with planting to create semi private zones such as simbulance area.
- Planting along circulation and communal area to provide maximum shade.
- Buffer planting towards Southgate to cut noise and pollution from highways into the site.



LANDSCAPE PROPOSALS

SIMBULANCE AREA



Section through the outdoor simbulance area, grass crete and link to the pine street.

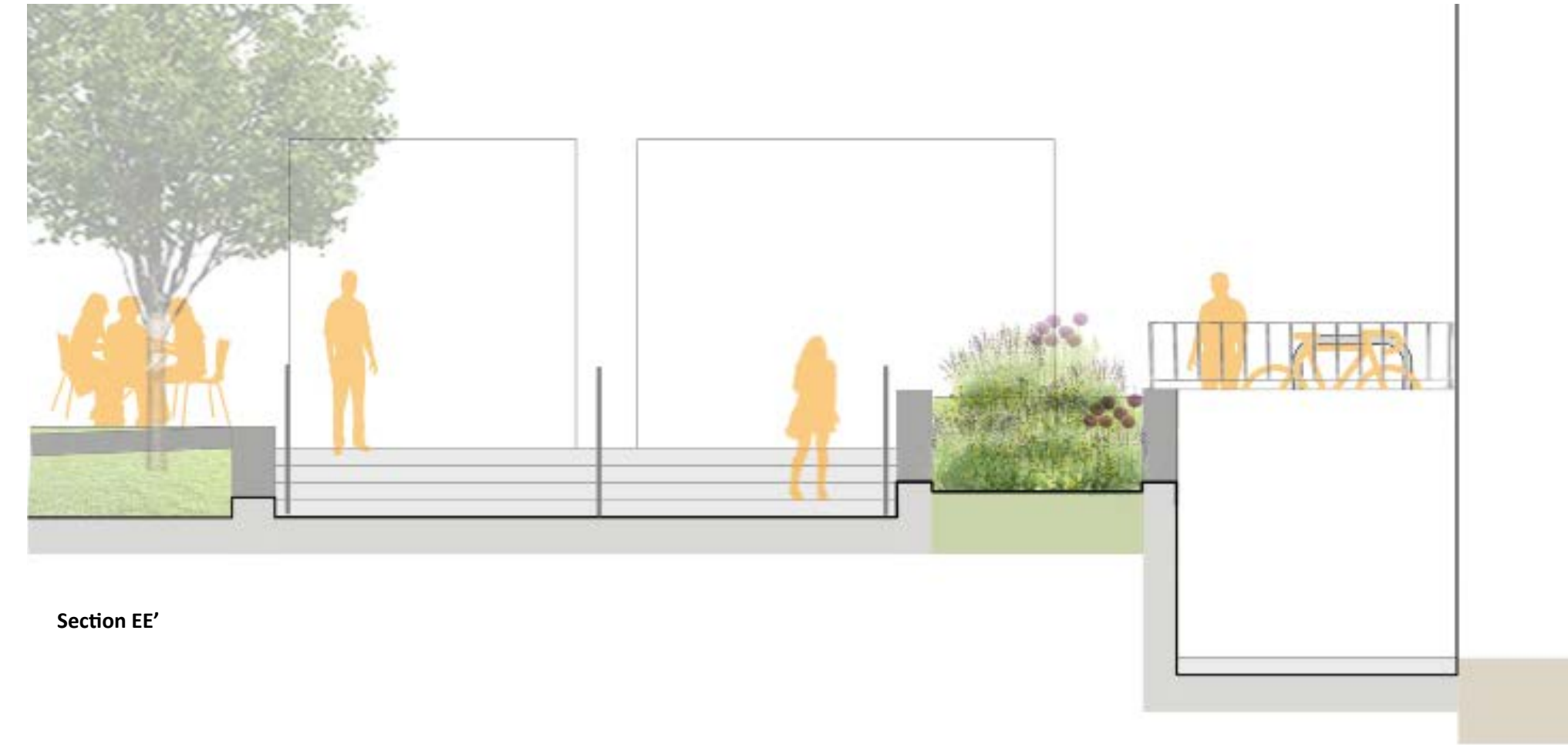
Reference image for the lifting of scrap cars across planting bed to the raised outdoor simbulance area as indicated on the plan.

UNIVERSITY OF HUDDERSFIELD : Health & Wellbeing Academy

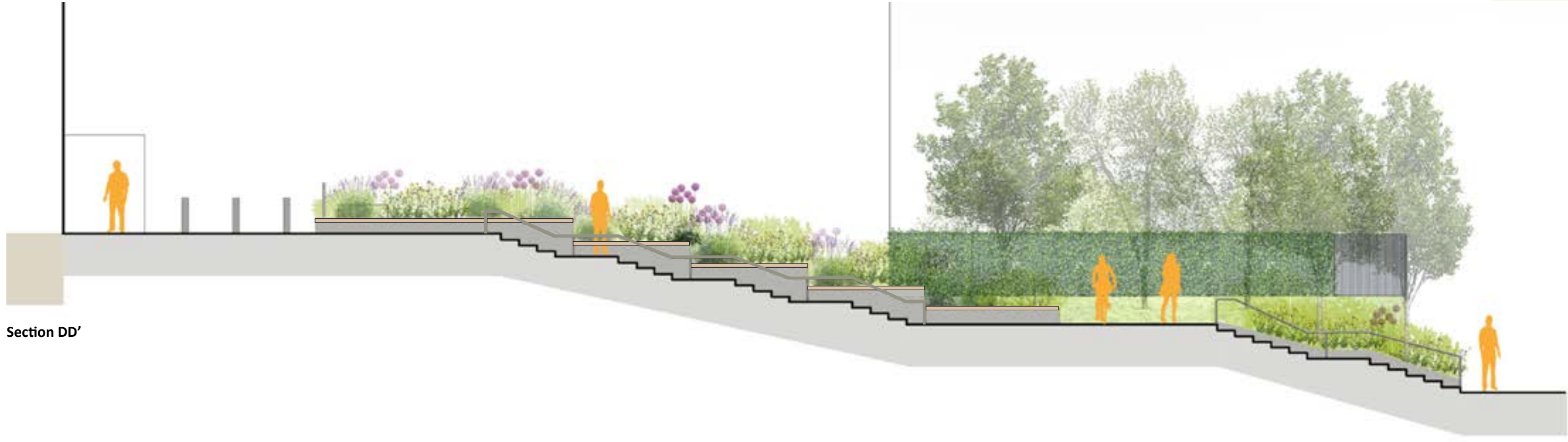
LANDSCAPE PROPOSALS

MAIN ENTRANCE

- Steps and ramp orientated to facilitate key pedestrian desire lines
- Handrails and railings to integrate seamlessly with architectural metalwork
- Planting softens building elevation and connects the Health & Wellbeing Academy to the future public realm development
- Widened steps lined with stepped planters in front of main entrance to match the scale of the building and improve site aesthetics.



Section EE'



Section DD'

UNIVERSITY OF HUDDERSFIELD : Health & Wellbeing Academy

LIGHTING STRATEGY

SITE-WIDE

Key Features of the Proposed Lighting

- Vandal Resistant
- Energy Efficient
- Functional - Proposed step lights would not only facilitate the safe guided movement but also contribute to the overall aesthetics of the site.
- The terrace planters with edge lights would help defining usable spaces and add to the serene ambience of the semi private terraces.



HARD LANDSCAPE MATERIALS AND FINISHES

FURNITURE

Cycle Storage

- Supplier: The Bike Storage Company or equivalent
- Product: Amazon Eco Enclosure
- Material & Construction: Lockable cycle storage being a temporary structure will have a cost effective functional structure with metal frame and vertical tanalised softwood uprights as shown in the images for facade treatment.



Bin Storage

- Supplier: Jacksons Fencing or equivalent
- Product: Euroguard Weldmesh Fencing
- Material & Construction: 2.0m high Bin Store Enclosure will have bespoke structure with metal posts and 3m wide weldmesh fence panels. The weldmesh fence will screen the bins area as well keep the store ventilated.



Simblance Area Ivy Screen

- Supplier: Greentech or equivalent
- Product: Hedera Helix Living Ivy Green Screens
- Material & Construction: 1.8m high and 1.2m wide ivy screens ready to be planted and supported by 75mm x 75mm wooden posts.

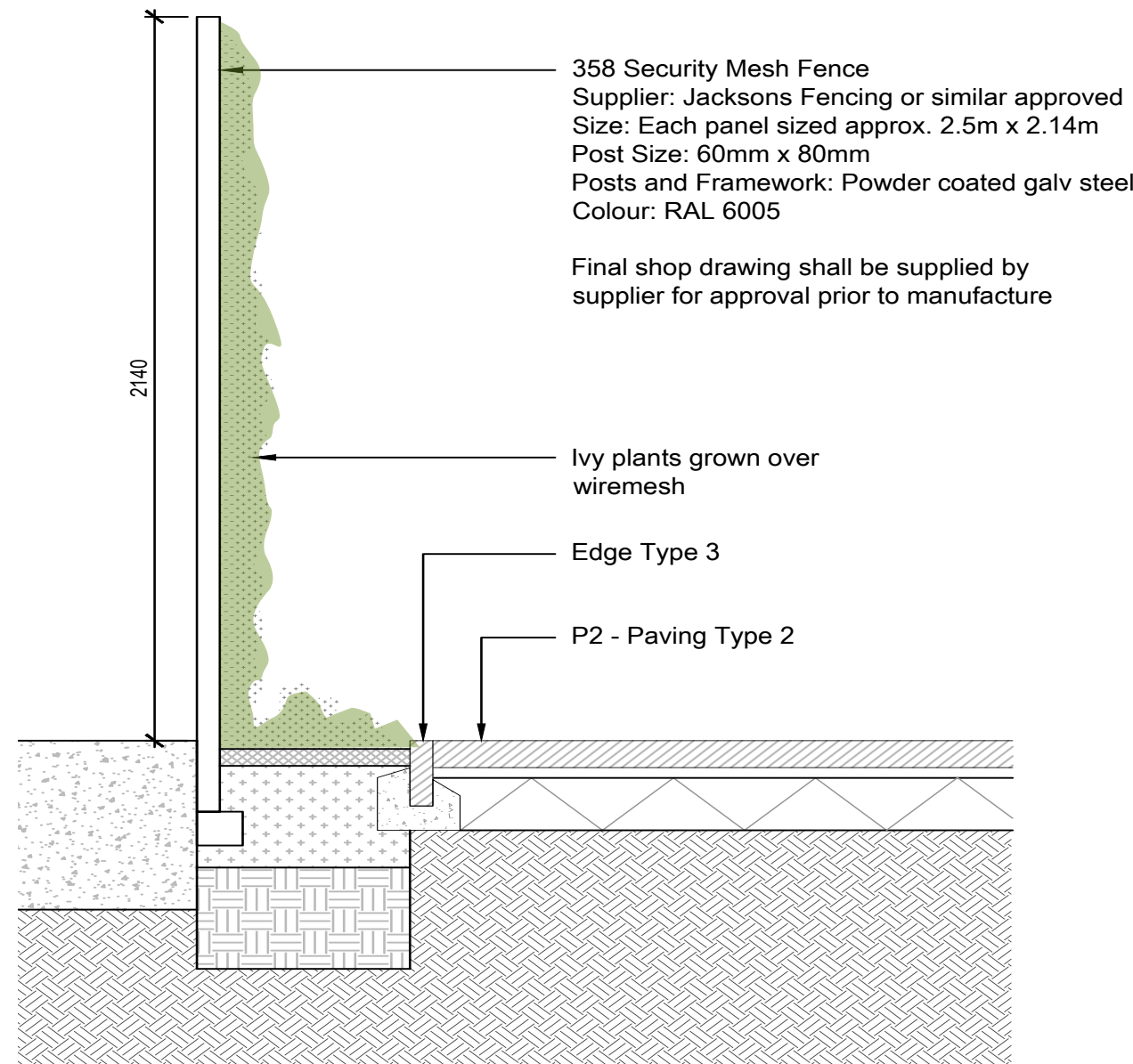


HARD LANDSCAPE MATERIALS AND FINISHES

FURNITURE

Sprinkler Tank Screen

- Supplier: Johnsons fencing or equivalent
- Material & Construction: 2.1m high fence with 2.5m wide panels. The Securi-Mesh panels are constructed from 76.2 x 12.7mm resistance mesh with 4mm wire.
- Note: Structural metal components / posts to be provided by supplier



UNIVERSITY OF HUDDERSFIELD : Health & Wellbeing Academy

HARD LANDSCAPE MATERIALS AND FINISHES

FURNITURE

Planters

- Supplier: Wickes or equivalent
- Product: Forest Garden Kitchen Planter
- Material & Construction: 1.8m large planters with wooden legs and slats are suitable for growing herbs, vegetables or ornamental plants. Also, they are easy to relocate when required.
- Location: Simbulance area



Planters

- Supplier: Kinley or equivalent
- Product: Kinley metal planterline
- Material & Construction: 3mm folded steel panel system, suitable for podium or terraces. Colour to match architectural metalwork.
- Location: Terraces



Planters

- Supplier: Streetlife or equivalent
- Product: Shrubtub Square
- Material & Construction: Weathering steel planter with the Treetec Bottom Up system to ensure adequate insulation, oxygen circulation, rootball fixing, irrigation and excess water drainage.
- Location: Western entrance area



UNIVERSITY OF HUDDERSFIELD : Health & Wellbeing Academy

HARD LANDSCAPE MATERIALS AND FINISHES

STEPS, HANDRAIL AND PLANTER

Entrance Steps

- Supplier: Marshalls / Tobermore or equivalent
- Product: Granite step units with contrasting nose
- Material & Construction: 1000 x 400 x 150mm silver grey granite step units with dark grey granite nosing (55 x 55mm)
- Location: Main entrance



Railing and Metal Work

- Seamless metal handrail on both sides of the entrance steps.
- Material & Construction: Handrail to steps will be brushed stainless steel. Free standing stainless steel handrail 45mm diameter. Fixed 75mm from wall edge. Top of handrail 1000/1100mm above finished floor level.



Stepped Planter

- Supplier: Contractor's choice
- Material & Construction: In-situ concrete with fair finish
- Coping: Buff coloured Yorkstone coping. 250 x 400mm, 100mm thick.



FURNITURE

Benches

- Supplier: Marshalls or equivalent
- Product: Metrolinia Seat 1200
- Material & Construction: Bespoke timber slats, easy to install on concrete seats. Dimension: 1200 x 600 x 450mm. Location: along lawn edges.



Cycle Hoops

- Supplier: Broxap or equivalent
- Product: Sheffield Cycle Stand
- Material & Construction: Bespoke brushed stainless steel cycle hoops. 800mm high x 715mm wide stands. 800mm centres as standard. No. of hoops options: 3 hoops / 4 hoops / 5 hoops / 6 hoops.



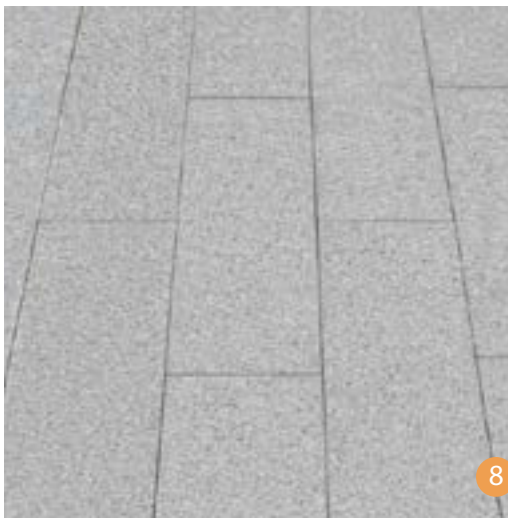
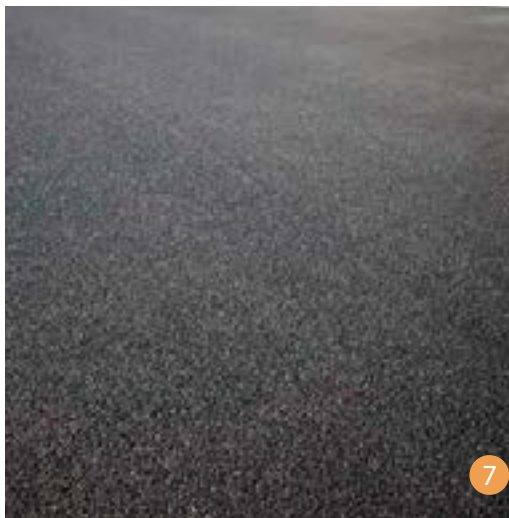
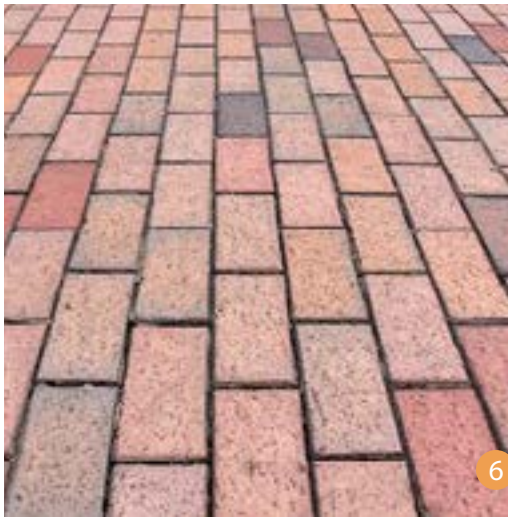
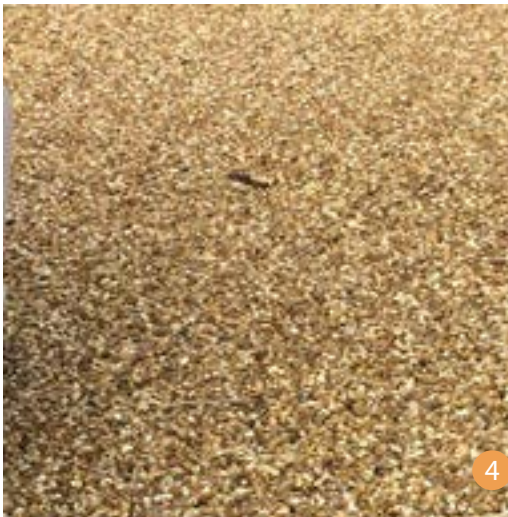
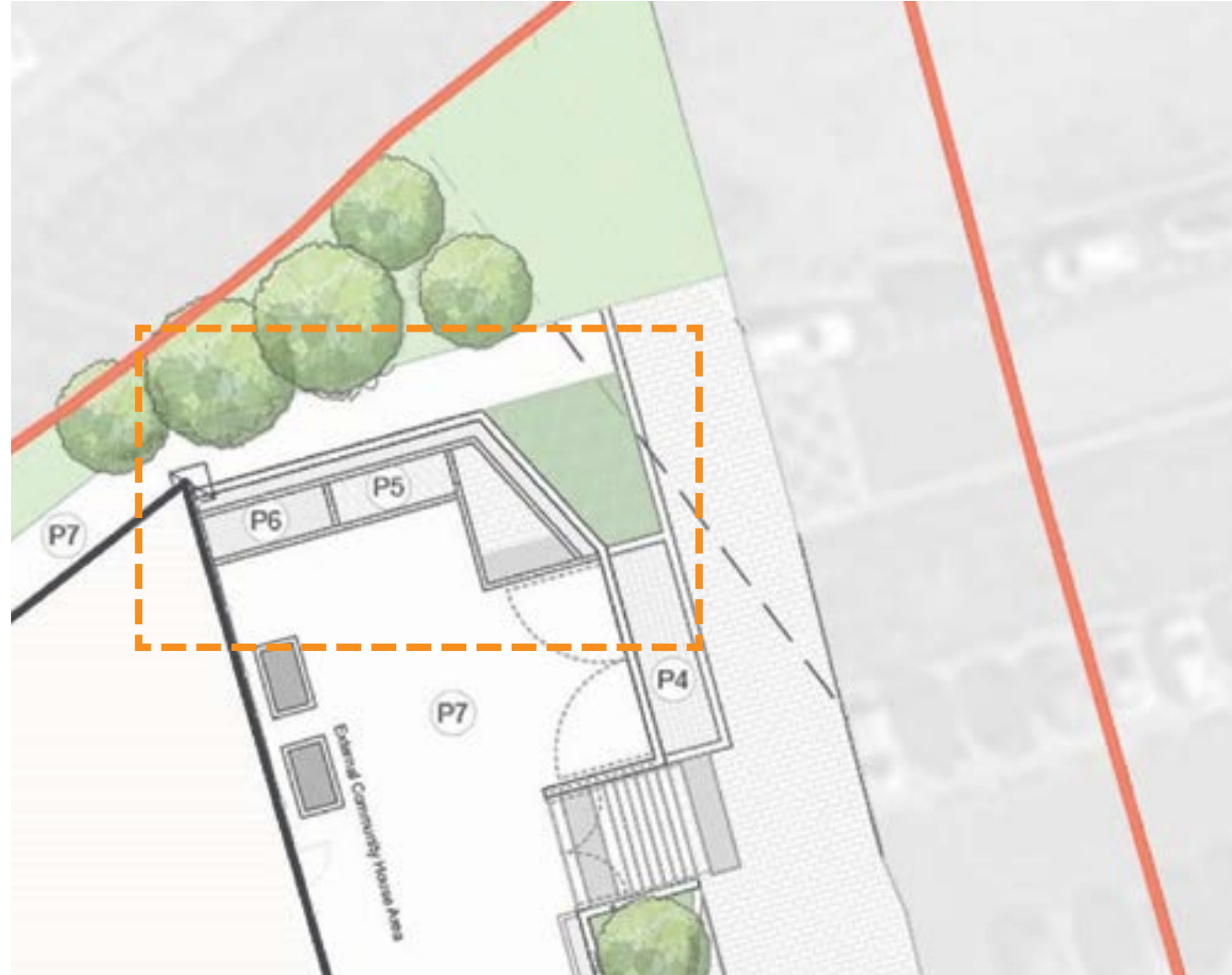
SITE-WIDE PAVING

Paving / Finishes

- **Composite Wood Decking:** from Envirobuild or equivalent supplier, Forbo Vinyl range.
- **Pre-cast Concrete Paving Slabs:** Terraces - from Marshalls conservation range. 600x600x50mm slabs, silver grey.
- **Concrete Paving Blocks:** Ground floor paving - from Marshalls modal range. 400x300x80mm rigid laid concrete blocks around building. Colours: Light grey and mid grey to match campus palette.
- **Corduroy paving** at the start and end of steps
- **Yorkstone:** from Johnsons Wellfield or equivalent supplier. Buff coloured Yorkstone paving to building threshold. Sizes - 75x150x random length (300-750mm).
- **Artificial grass** on terrace gardens. From Trulawn or equivalent supplier, Delight range.



SIMBULANCE AREA SENSORY PAVING



Sensory Paving / Finishes

- Tactile pavers / Corduroy
- Cobbles
- Resin bound / bonded gravel
- Grass
- Brick paving
- Tarmac
- Concrete pavers

TREES

Trees will be used to screen simbulance area, add vertical interest, and shelter seating areas. Trees are selected for their spring and autumn interest, ecological and wellbeing benefits.



PRUNUS SPIRE
(SINGLE-STEM)



CERCIDIPHYLLUM JAPONICUM
(MULTI-STEM)



AMELANCHIER LAMARCKII
(MULTI-STEM)



BETULA JACQUEMONTII
(SINGLE-STEM)



MALUS 'EVERESTE'
(SINGLE-STEM)



PINUS SYLVESTRIS
(SINGLE-STEM)



OLEA EUROPAEA
(MULTI-STEM)



ALNUS INCANA
(SINGLE-STEM)

SHRUBS AND HERBACEOUS PLANTING



HERBACEOUS AND ORNAMENTAL SHRUB PLANTING MIX

Sunny borders of mixed shrubs, perennials, grasses and bulbs. Planting to define key seating/gathering areas and to create interest within raised planters. Plants selected for their varied forms and visual interest during winter, spring and autumn. Planting will be minimum 2L pot with 4 plants / sqm and 25 bulbs / sqm.

- Sedum 'Autumn Joy'
- Geranium rozanne
- Vinca minor 'Variegata'
- Agapanthus 'Fireworks'
- Allium 'Mont Blanc'
- Aucuba japonica 'Salicifolia'
- Daphne laureola
- Euonymus fortuneii 'Emerald n Gold'
- Hebe sutherlandii
- Leucojum vernum
- Narcissus moonlight
- Nepeta racemosa 'Walker's Low'
- Rosa 'Kent'
- Scilla siberica
- Thymus vulgaris 'Silver Queen'
- Santolina rosmarinifolia

SENSORY / EDIBLE PLANTING



Rosmarinus 'Miss Jessop's Upright'
Common name: Rosemary



Lavandula 'Hidcote'
Common name: Lavender



Santolina virens
Common name: Lavender cotton



Allium schoenoprasum
Common name: Chives



Mentha piperita
Common name: Mint



Origanum vulgare
Common name: Golden Marjoram



Vaccinium sect. Cyanococcus
Common name: Blueberry

