

s p a c e
architecture and design limited

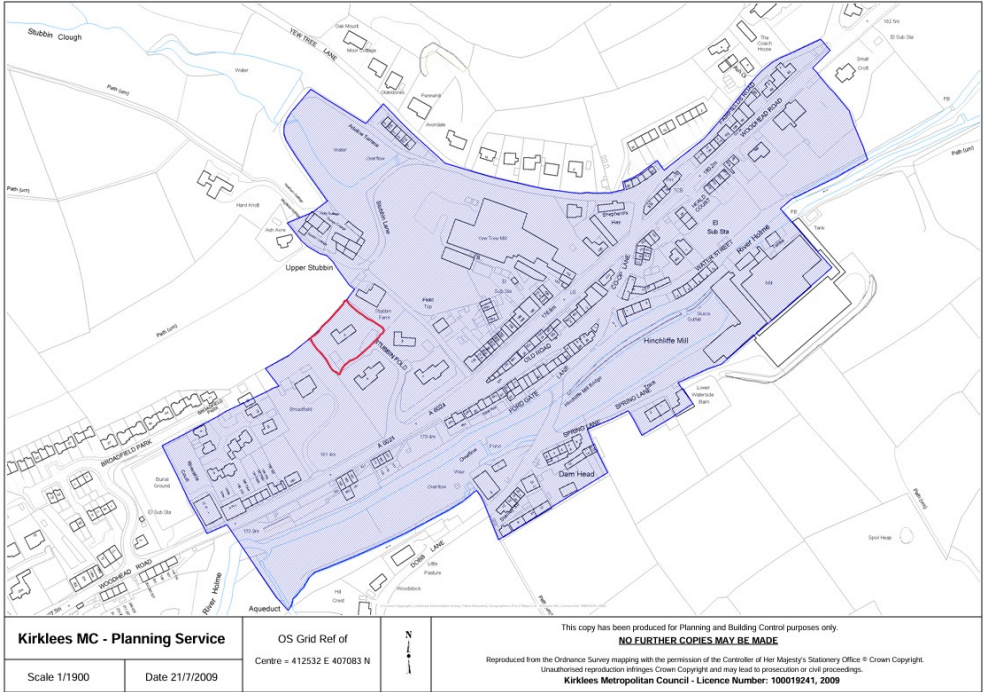
The Studio
Lake House
Blackmoorfoot Road
Huddersfield
HD7 5TR

t: 01484 841423
f: 01484 847757

e: md@spacearchitecture.net
w: www.spacearchitecture.net

**Heritage Statement for:
Front Entrance Porch, 3 Stubbin Fold, Holmbridge, Holmfirth, HD9 2BB.**

3 Stubbin Fold is a relatively modern two storey stone house which lies reasonably centrally within the Hinchcliffe Mill Conservation Area. It is part of a development of four fairly similar houses to the south and west of Stubbin Farm.



Map of the Hinchcliffe Mill Conservation with Stubbin Fold highlighted in red.

Stubbin fold is an unadopted road that connects with Woodhead Road to the south. There is no written appraisal for the Hinchcliffe Mill Conservation Area, but it is predominantly characterized by strings of irregularly sized and shaped stone built houses set along the south facing slope of the Holme valley, either side of Woodhead Road. The houses would have originally been for workers at Yew Tree Mill that is set in a small, steep sided tributary valley or Hinchcliffe Mill set in the main valley bottom. Towards the edges of the conservation area there is a mixture of older houses set in tight groups or 'folds' and a number of more dispersed buildings, including a chapel.



View along Woodhead Road towards the East



View along Ford Gate towards the North-East



View of Yew Tree Mill from Woodhead Road

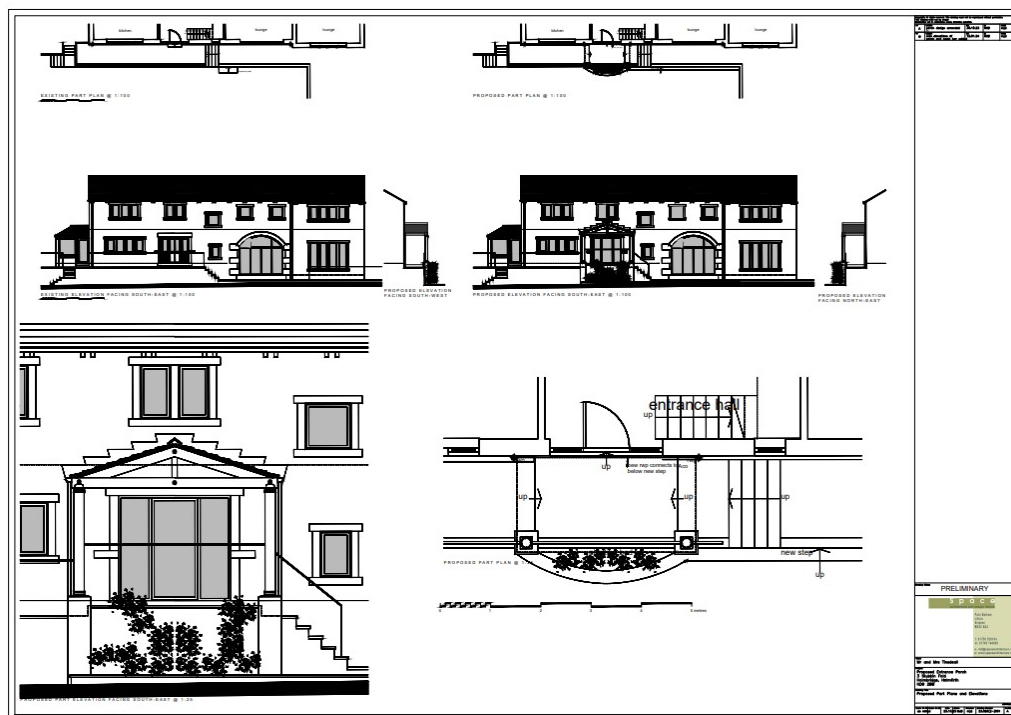


View along Water Street towards the West.



View along Stubbin Fold towards the North. Part of Number 3 is seen at the end of the road, towards the right.

The proposed front entrance porch is a modest single storey un-enclosed structure built using materials that dominate the conservation area – local sandstone and stone slates. It will be built on top of the existing stone plinth on which the property sits. It projects approximately 2.5 metres from the front face of the house and, at the ridge, will be approximately 3.0 metres high. The aim of the design is to improve the experience of the final stages of the approach to the house and entry into it, this currently being a shortfall of the original design. The impact of the proposed porch on the Conservation Area and surrounding properties will be negligible given its size, appearance and location.



Planning application drawing showing the proposed porch.