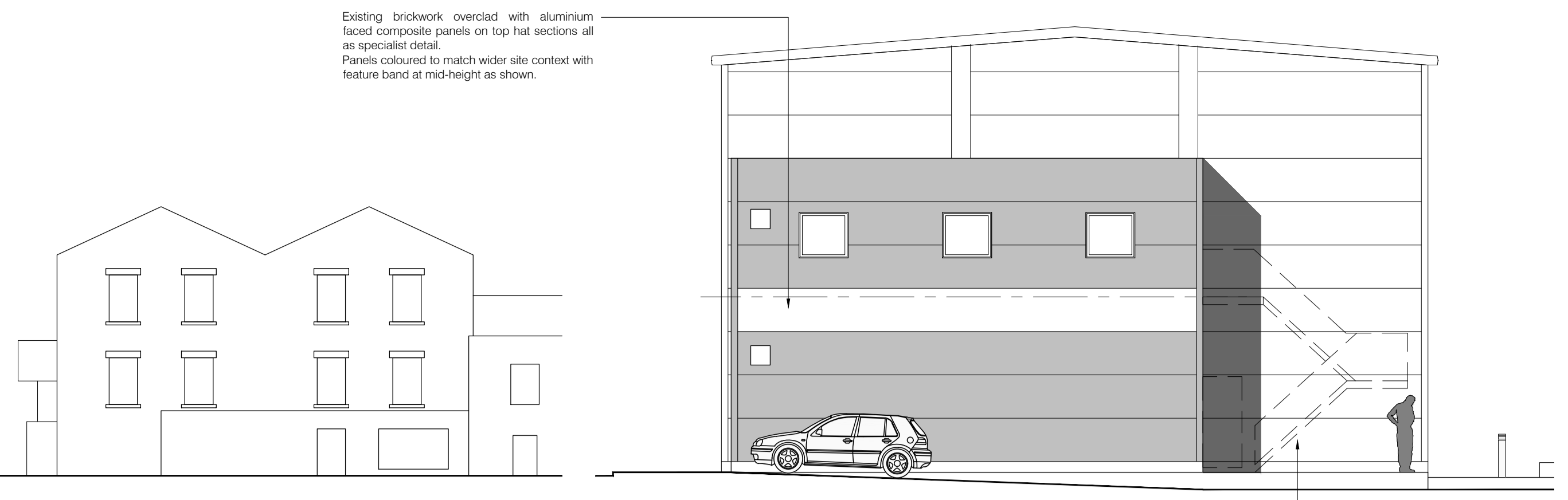


Bradford Road Elevation 1: 200



Western Elevation 1: 100



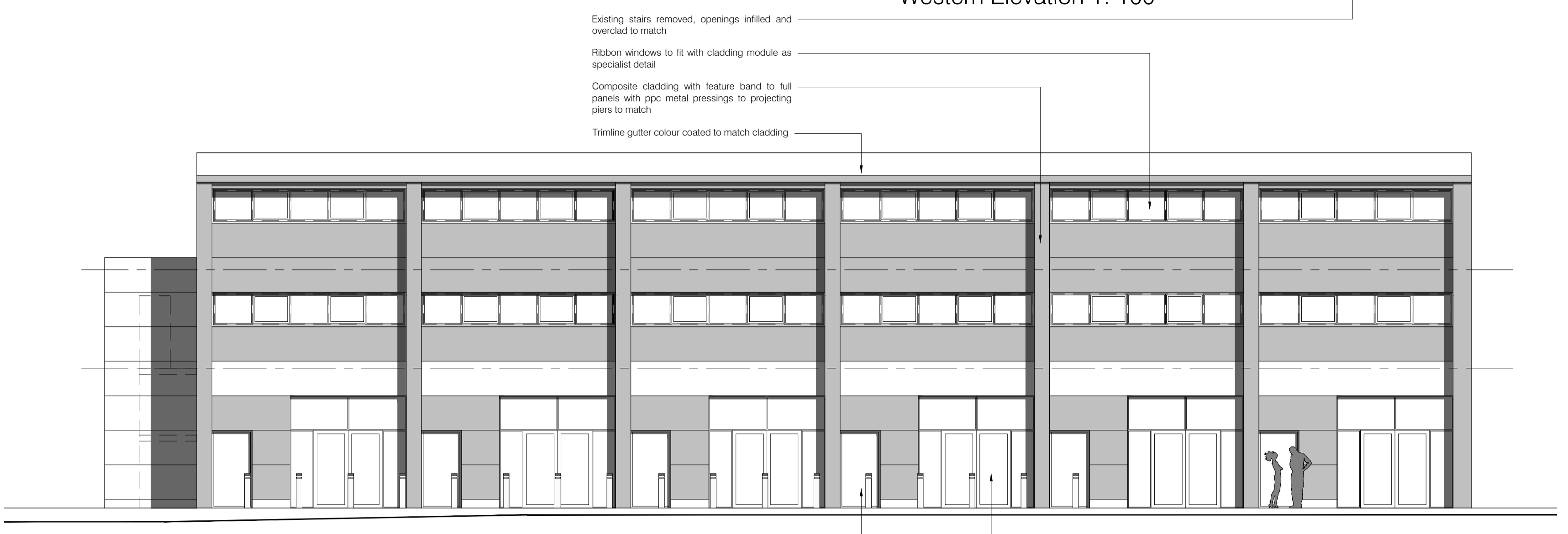
Second Floor Plan 1: 100



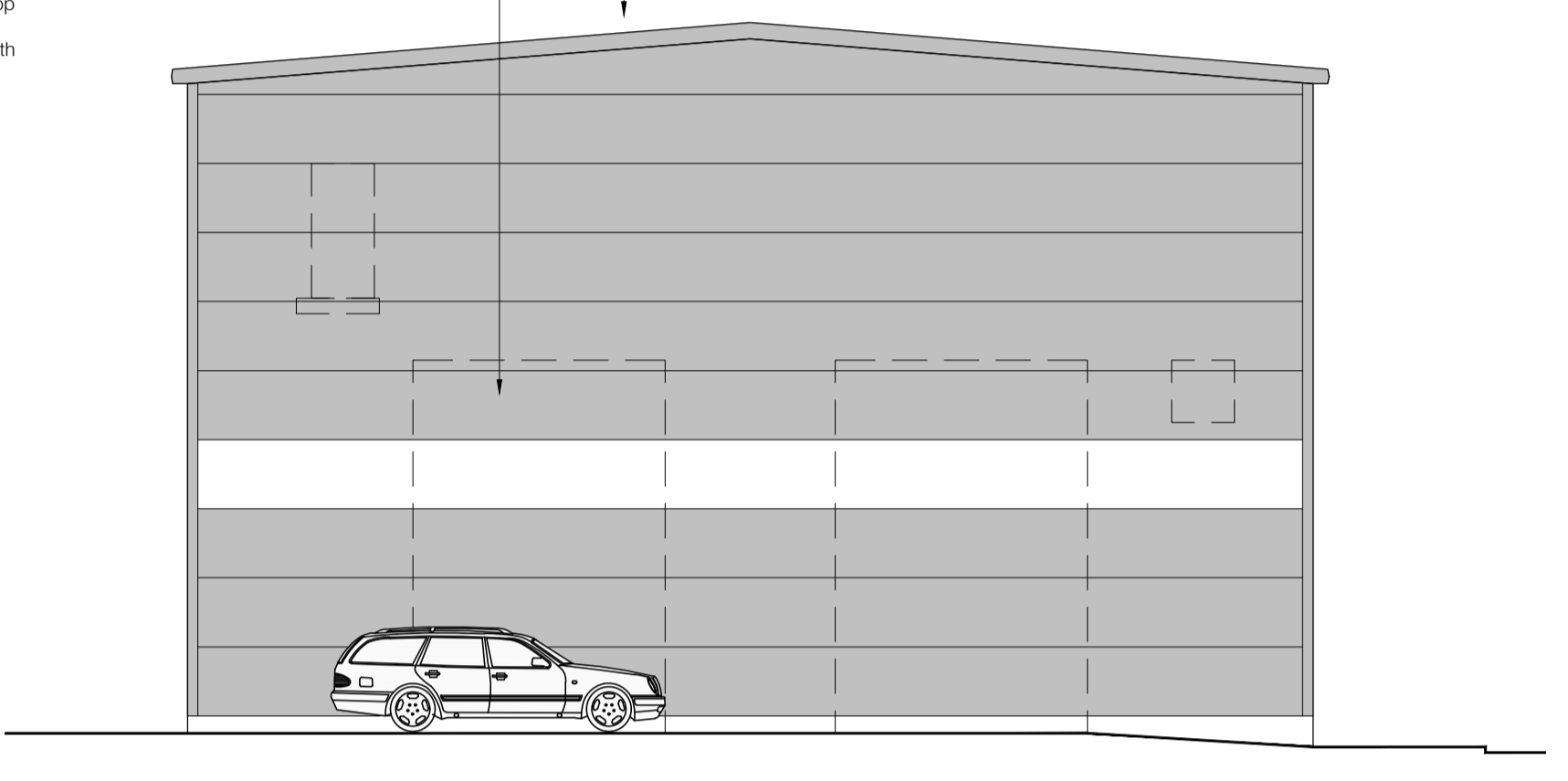
First Floor Plan 1: 100



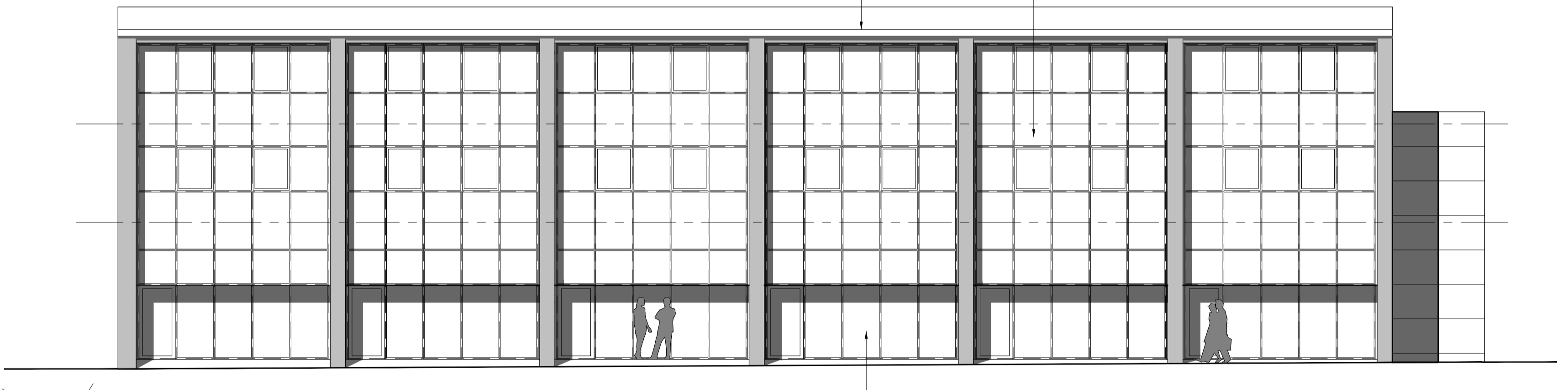
Ground Floor Plan 1: 100



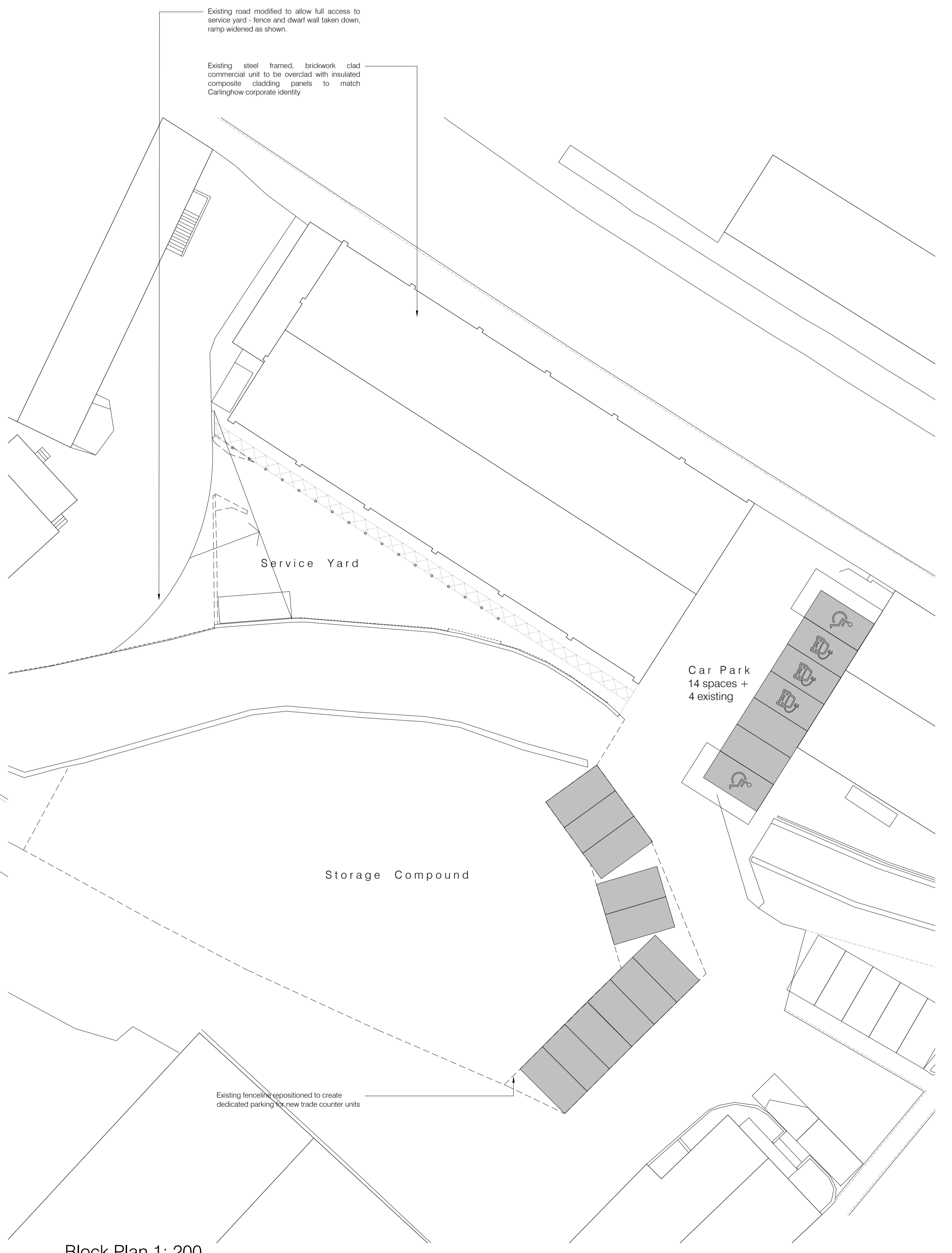
Southern Elevation 1: 100



Eastern Elevation 1: 100



Northern Elevation 1: 100



Block Plan 1: 200

Existing brickwork overlaid with aluminum faced composite panels on top hat sections all as specialist detail. Panels coloured to match wider site context with feature band at mid height as shown.

Existing stairs removed, openings infilled and overlaid to match.
Ribbon windows to fit with cladding module as specialist detail.
Composite cladding with feature band to full panels with ipcc metal pressings to projecting pins to match.
Trimline gutter colour coated to match cladding.

Fix steel escape door and roller shutter goods door in openings formed in existing brickwork wall new cladding as specialist detail.
Aluminum shopfronts with laminated glazing and integral security shutter.
Colour coated fascia pressing with profile to match gutter.
Existing openings infilled and elevation overlaid with aluminum faced composite panels on top hat sections all as specialist detail. Panels coloured to match wider site context with feature band at mid height as shown.

Full height curtain walling as specialist detail between existing piers overlaid with metal pressings as rolled elsewhere. Requirement for opening lights subject to Acoustic detail.

Curtain walling infilled at ground floor to create display window with emergency escape door.
Existing road modified to allow full access to service yard - fence and door wall taken down, ramp widened as shown.

Existing steel framed, brickwork clad commercial unit to be overlaid with insulated composite cladding panels to match Carlinghough corporate identity.

Existing fence repositioned to create dedicated parking for new trade counter units.