

THIS DRAWING IS COPYRIGHT AND REMAINS THE PROPERTY OF HIC ARCHITECTS. IT MUST NOT BE REPRODUCED, USED, DISCLOSED OR TRANSMITTED TO THIRD PARTIES IN ANY FORM, IN WHOLE OR IN PART, WITHOUT PRIOR WRITTEN PERMISSION.

DO NOT SCALE!
ALL DIMENSIONS SHOULD BE CHECKED ON SITE BEFORE WORK COMMENCES

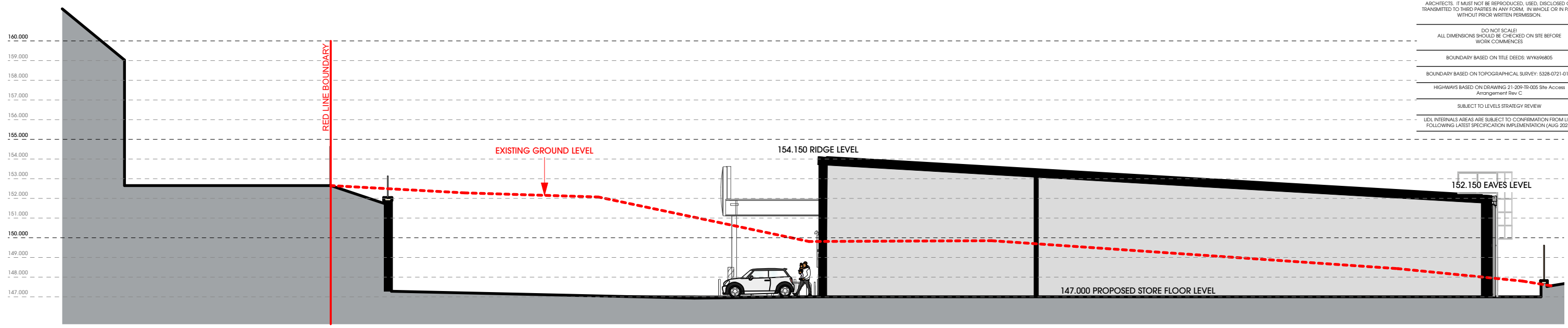
BOUNDARY BASED ON TITLE DEEDS: WYK696805

BOUNDARY BASED ON TOPOGRAPHICAL SURVEY: 5328-0721-01C

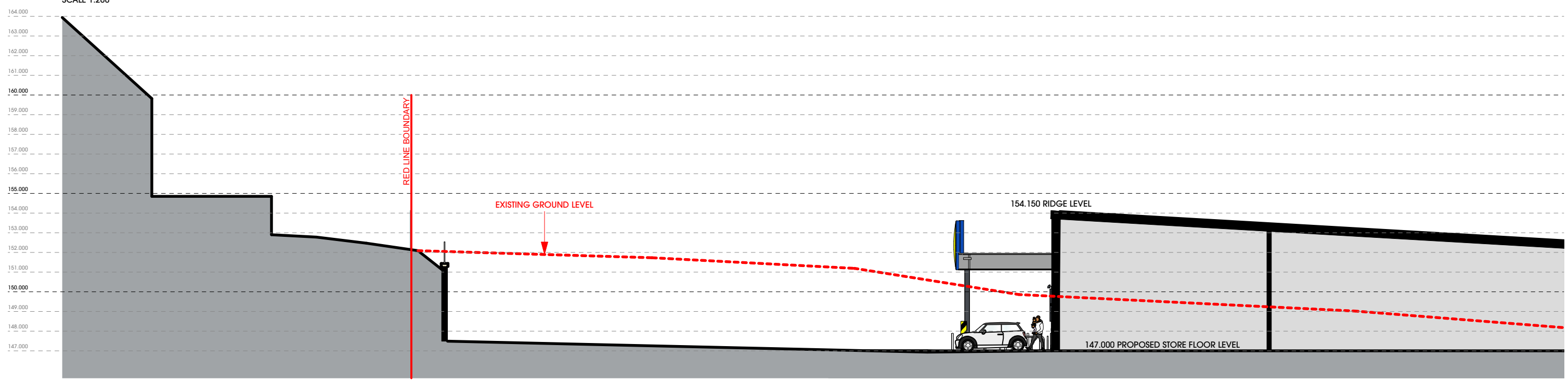
HIGHWAYS BASED ON DRAWING: 21-209-TR-005 Site Access Arrangement Rev C

SUBJECT TO LEVELS STRATEGY REVIEW

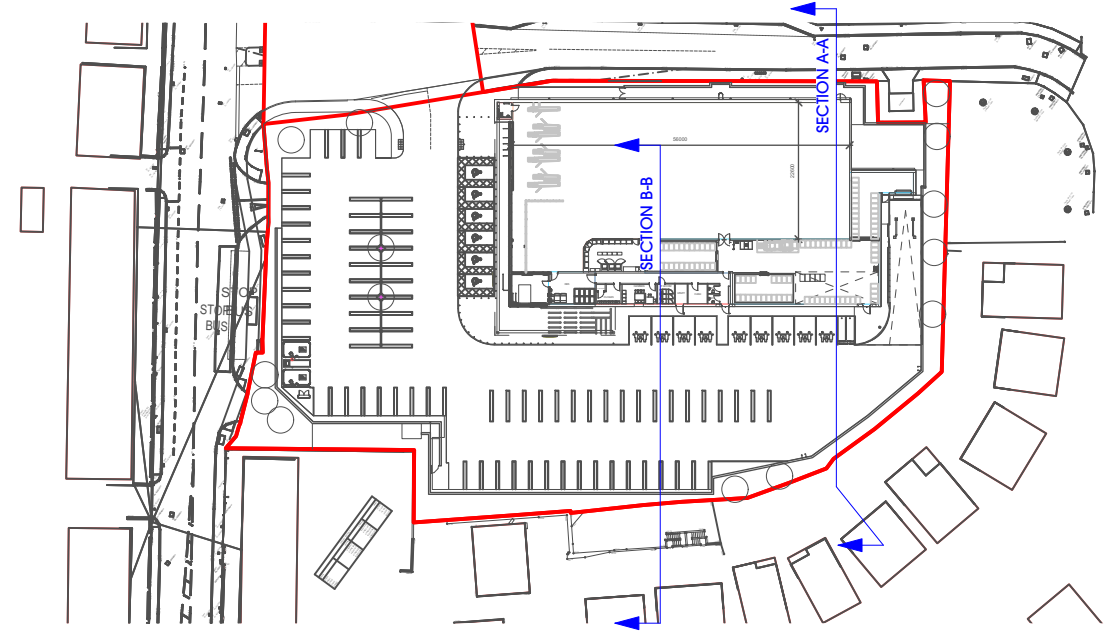
LIDL INTERNALS ARE SUBJECT TO CONFIRMATION FROM LIDL FOLLOWING LATEST SPECIFICATION IMPLEMENTATION (AUG 2023)



SECTION A-A
SCALE 1:200



SECTION B-B
SCALE 1:200



SITE PLAN
SCALE 1:1250

Rev	Date	Description	KA	Drawn
A	28/03/2024	Proposed signage removed		

htcarchitects
York Place Studio
8 Britannia Street
Leeds
LS1 2JZ
T: (0113) 244 3457
W: www.htcarchitects.co.uk
E: info@htcarchitects.co.uk

client
Lidl GB Ltd.



project
Blackmoorfoot Road
Huddersfield
drawing title
Proposed Sections AA BB

date August 2023
status Planning
scale AS NOTED
drawn BM checked PH
job no. 2783 dwg no. P301 rev. A