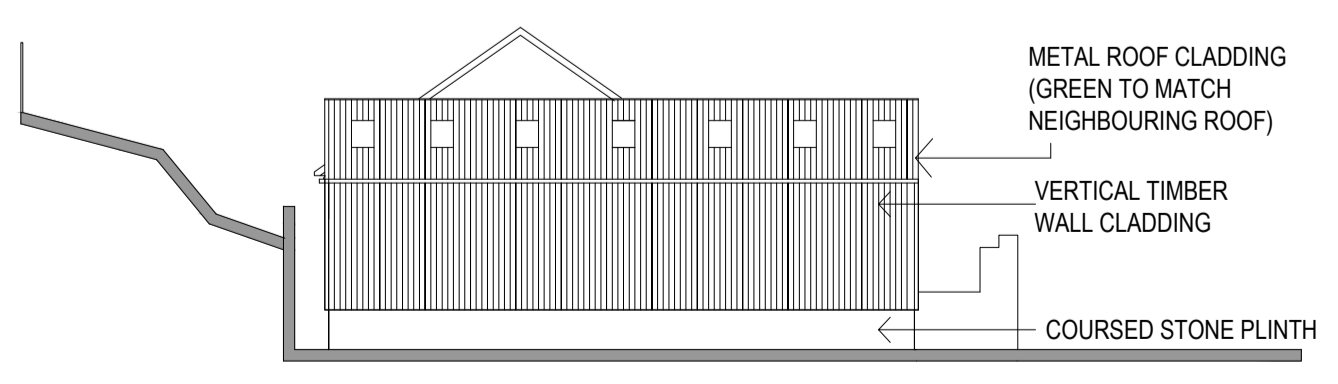


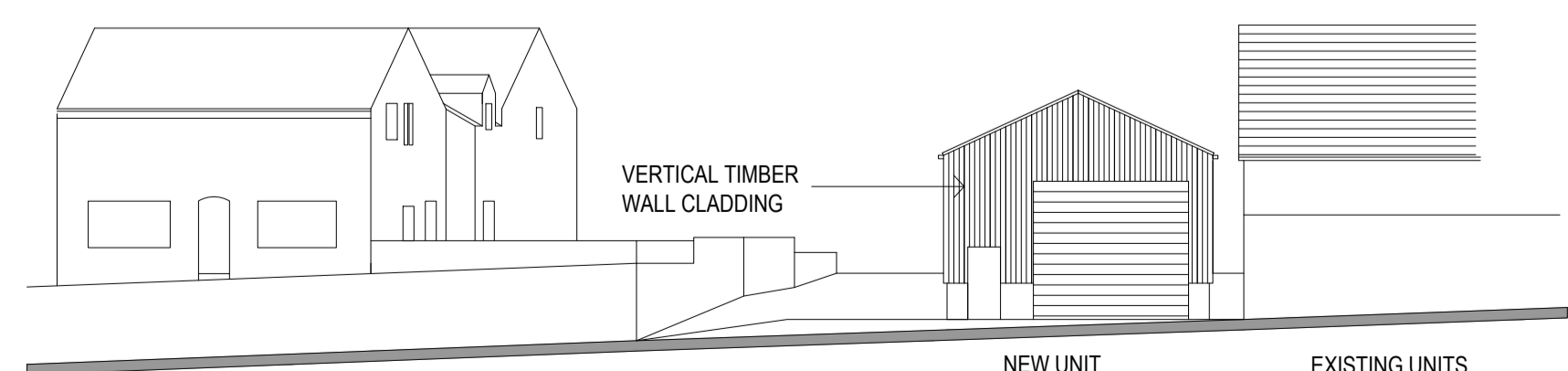
IF IN ANY DOUBT PLEASE ASK THE ARCHITECT FOR CLARIFICATION.
DO NOT SCALE FROM DRAWING. ALL DIMENSIONS TO BE CHECKED ON SITE.
THE COPYRIGHT FOR THESE DRAWINGS REMAINS THE PROPERTY OF THE ARCHITECT. THEY MUST NOT BE REPRODUCED IN ANY WAY WITHOUT THE ARCHITECT'S PRIOR WRITTEN CONSENT.



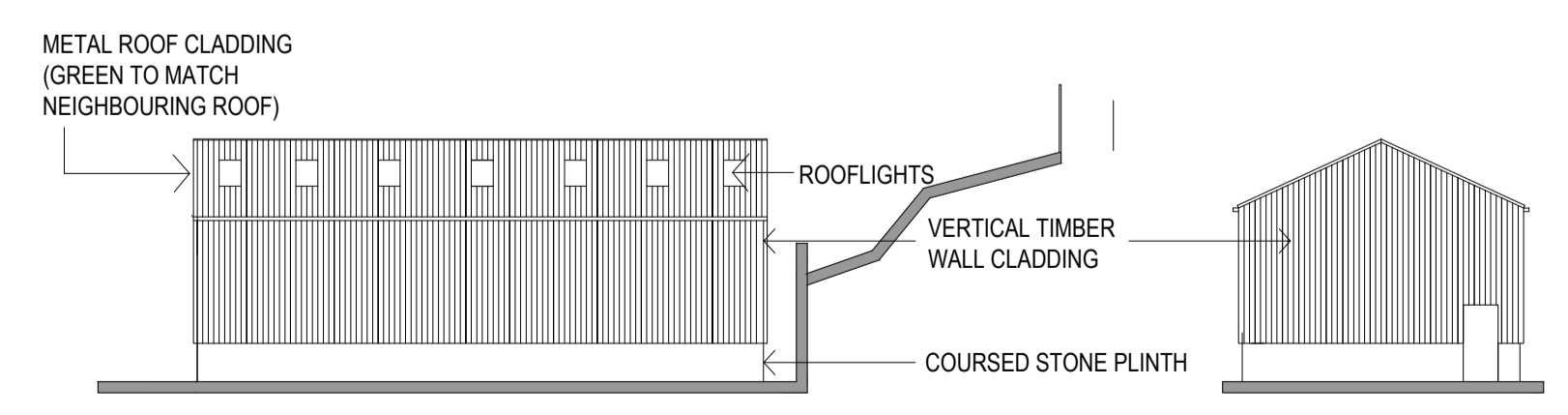
SITE PLAN



SOUTH



EAST VIEW



NORTH

WEST



northern design partnership

Chartered Architects
The Chapel, Millmoor Road,
Meltham, Holmfirth, HD9 5JU

www.northerndesignpartnership.co.uk
Instagram: @northerndesignp
Telephone: (01484) 854848

client	TRACEY BURGIN		
project	PROPOSED INDUSTRIAL UNIT THE OLD RAILWAY GOODS YARD SCAR LANE MILNSBRIDGE HD3 4PE		
drawing	SITE AS PROPOSED		
revision	notes	date	drawn
A	WALL CLADDING AMENDED TO TIMBER AND ENTRANCE REVISED TO IMPROVE VISIBILITY	14.06.23	PB
B	ENTRANCE REVISED	26.07.23	PB
C	ROOF AMENDED	22.08.23	PB
scale:	1:200 @ A1	13.02.23	PB
project no.	2257	drawing no.	02
		revision	C