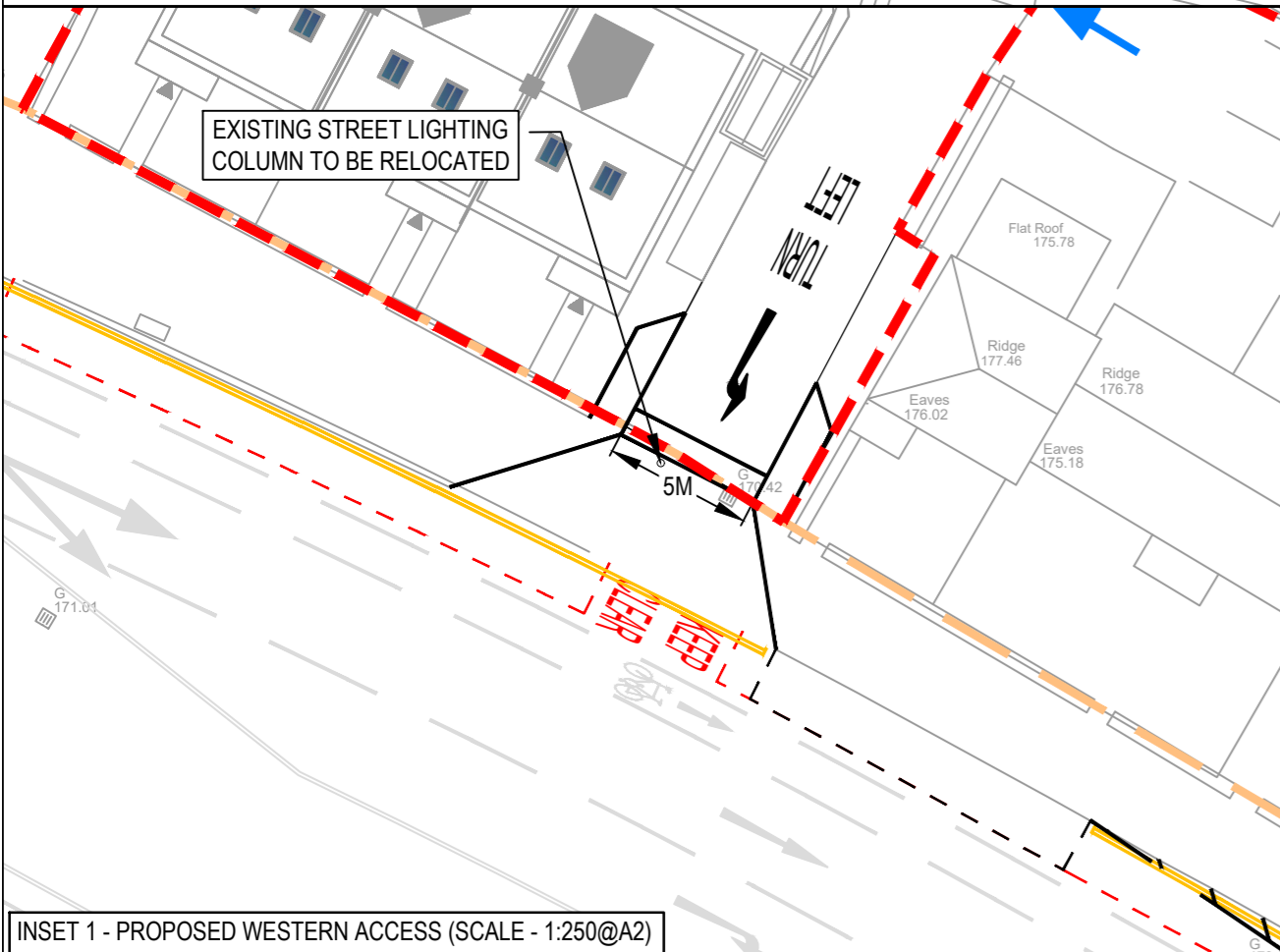




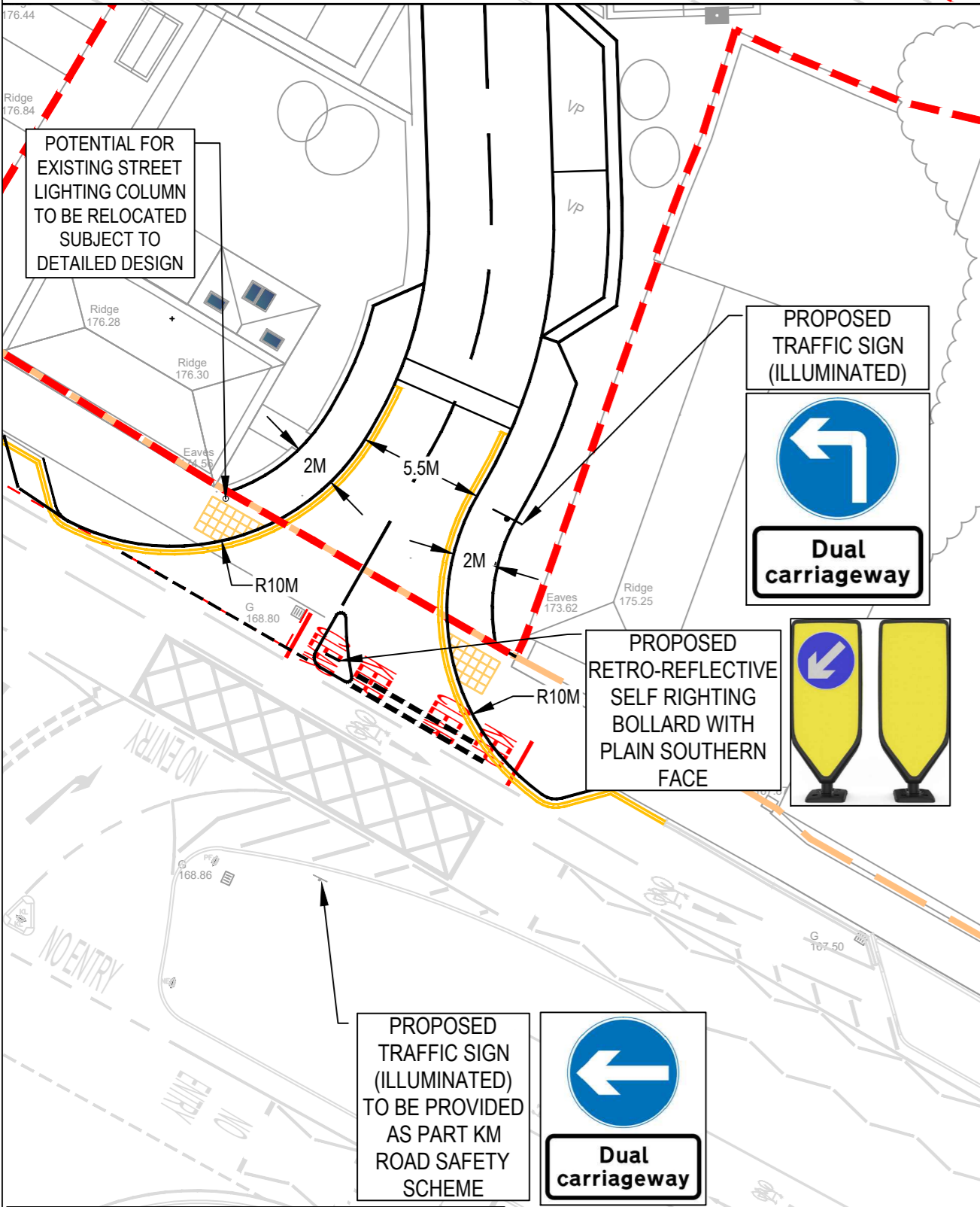
KEY: DO NOT SCALE

- SITE BOUNDARY
- EXISTING HIGHWAY ADOPTION LIMIT
- KIRKLEES COUNCIL ROAD SAFETY SCHEME (SEE NOTE 2)
- KIRKLEES COUNCIL ROAD SAFETY SCHEME TO BE REMOVED
- JUNCTION VISIBILITY SPLAY (SEE NOTE 3)
- FORWARD VISIBILITY SPLAY (SEE NOTE 4)
- PRIVATE DRIVE JUNCTION VISIBILITY
- PROPOSED DOUBLE YELLOW LINE TRO (SEE NOTE 5)
- EXISTING PRIVATE DRIVE-WAY

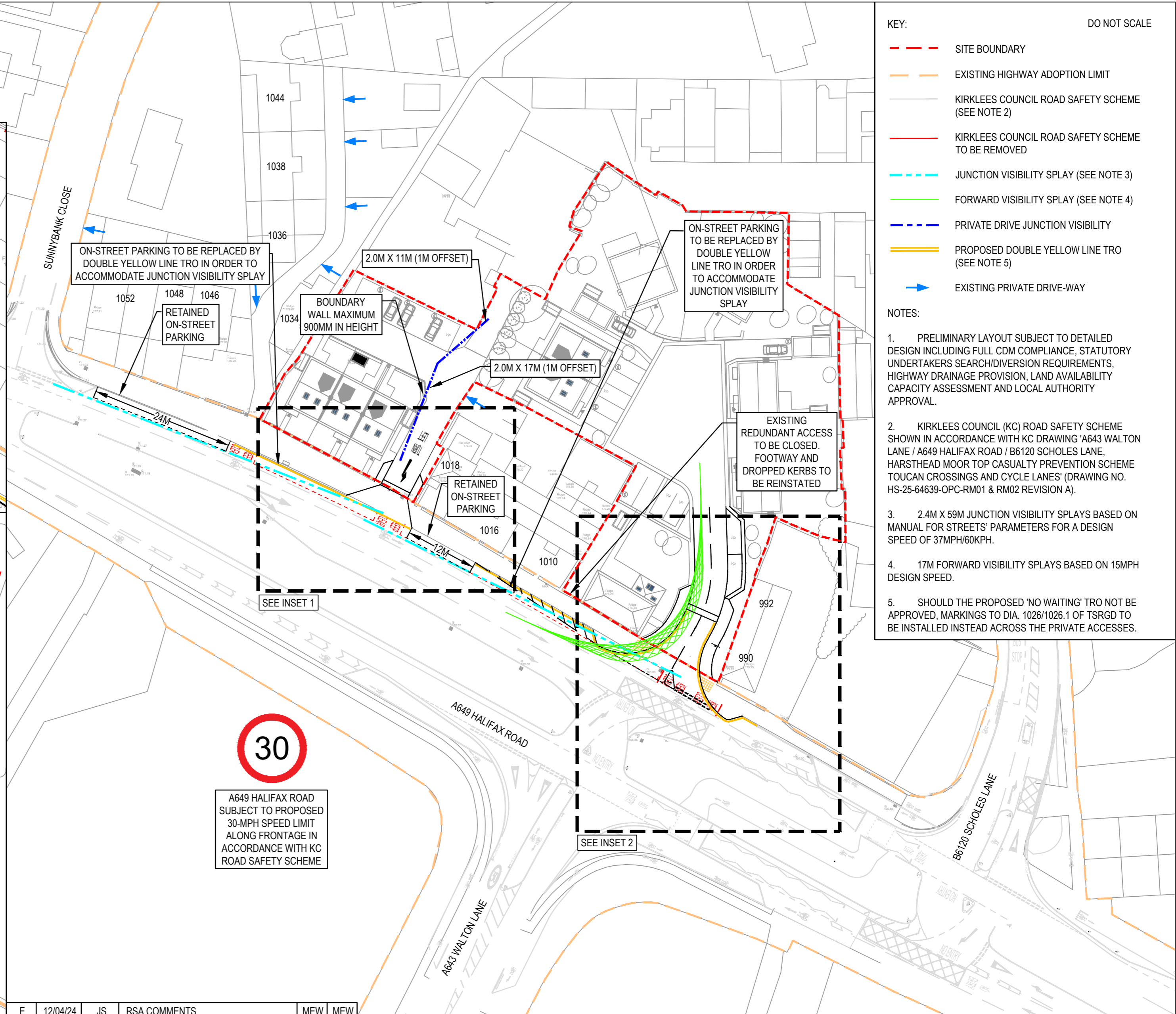
- NOTES:
1. PRELIMINARY LAYOUT SUBJECT TO DETAILED DESIGN INCLUDING FULL CDM COMPLIANCE, STATUTORY UNDERTAKERS SEARCH/DIVERSION REQUIREMENTS, HIGHWAY DRAINAGE PROVISION, LAND AVAILABILITY CAPACITY ASSESSMENT AND LOCAL AUTHORITY APPROVAL.
 2. KIRKLEES COUNCIL (KC) ROAD SAFETY SCHEME SHOWN IN ACCORDANCE WITH KC DRAWING 'A643 WALTON LANE / A649 HALIFAX ROAD / B6120 SCHOLES LANE, HARSTHEAD MOOR TOP CASUALTY PREVENTION SCHEME TOUCAN CROSSINGS AND CYCLE LANES' (DRAWING NO. HS-25-64639-OPC-RM01 & RM02 REVISION A).
 3. 2.4M X 59M JUNCTION VISIBILITY SPLAYS BASED ON MANUAL FOR STREETS' PARAMETERS FOR A DESIGN SPEED OF 37MPH/60KPH.
 4. 17M FORWARD VISIBILITY SPLAYS BASED ON 15MPH DESIGN SPEED.
 5. SHOULD THE PROPOSED 'NO WAITING' TRO NOT BE APPROVED, MARKINGS TO DIA. 1026/1026.1 OF TSRGD TO BE INSTALLED INSTEAD ACROSS THE PRIVATE ACCESSES.



INSET 1 - PROPOSED WESTERN ACCESS (SCALE - 1:250@A2)



INSET 2 - PROPOSED CENTRAL ACCESS (SCALE - 1:250@A2)



A649 HALIFAX ROAD
SUBJECT TO PROPOSED
30-MPH SPEED LIMIT
ALONG FRONTAGE IN
ACCORDANCE WITH KC
ROAD SAFETY SCHEME

REV	DATE	BY	DESCRIPTION	CHK	APP
E	12/04/24	JS	RSA COMMENTS	MEW	MEW
D	20/03/24	JS	UPDATED LAYOUT	MEW	MEW
C	26/10/23	JS	KC COMMENTS	MEW	MEW
B	13/10/23	JS	KC SCHEME ADDED	MEW	MEW
A	17/08/23	SG	UPDATED SITE LAYOUT	MEW	MEW
-	05/12/22	JS	INITIAL ISSUE	MEW	MEW

STATUS: PRELIMINARY

PROJECT	PEARSONS TIMBER YARD, SCHOLES		CLIENT	MR JOHN WILKINSON	
DRAWING TITLE	PROPOSED ACCESS ARRANGEMENTS		CHECKED	APPROVED	DRG No.
	MEW	MEW	MEW	MEW	22098/GA/01
	JS	AS SHOWN	DRAWN BY:	SCALE @ A2	DATE
			JS	AS SHOWN	MAY 2024
					REV.
					E

Intelligent Highway Solutions
Suite 1, 3rd Floor, Goodbaird House, Infirmity Street
Leeds LS1 2JP
optimahighways.com
T 0113 245 1679