

COPYRIGHT RAMBOLL UK LIMITED. ALL RIGHTS RESERVED. THIS DOCUMENT IS ISSUED FOR THE PARTY WHO COMMISSIONED IT AND FOR THE SPECIFIC PURPOSES CONNECTED WITH THE PROJECT ONLY. IT SHOULD NOT BE RELIED UPON BY ANY OTHER PARTY OR USED FOR ANY OTHER PURPOSE. RAMBOLL ACCEPTS NO RESPONSIBILITY OR LIABILITY WHICH MAY ARISE FROM RELIANCE OR USE OF THIS DOCUMENT OR THE DATA CONTAINED HEREIN BY ANY OTHER PARTY OR FOR ANY OTHER PURPOSE.

NOTES

- DO NOT SCALE FROM THIS DRAWING.
- ALL DIMENSIONS ARE IN MILLIMETRES U.N.O.
- ALL LEVELS ARE IN METRES ABOVE ORDANCE DATUM U.N.O.
- THIS DRAWING IS TO BE READ IN CONJUNCTION WITH ALL RELEVANT ARCHITECTS AND ENGINEERS DRAWINGS AND SPECIFICATIONS.

UNFACTORED VARIABLE LOAD

PATTERN	DESCRIPTION	LOAD kN/m <sup>2</sup>
[Yellow]	CIRCULATION	4.0
[Green]	BEDROOMS	2.0+1.0 (PARTITIONS) = 3.0
[Pink]	KITCHENS	3.0
[Cyan]	DINING/BANQUET HALL	5.0
[Blue]	WALKWAYS (2-WAY PEDESTRIAN TRAFFIC)	5.0
[Orange]	STORAGE SPACE	5.0
[Red]	ROOF LOADING (MAINTENANCE ACCESS ONLY)	0.6
[Dark Green]	PLANT LOADING	7.5
[Grey]	GENERAL USE - STAFF CHANGING	2.5
[Light Grey]	GENERAL USE - COMMS	3.0
[Blue-Red]	GYM	5.0
[Brown]	GENERAL USE	2.5
[White]	WATER TANK LOADING	TBC

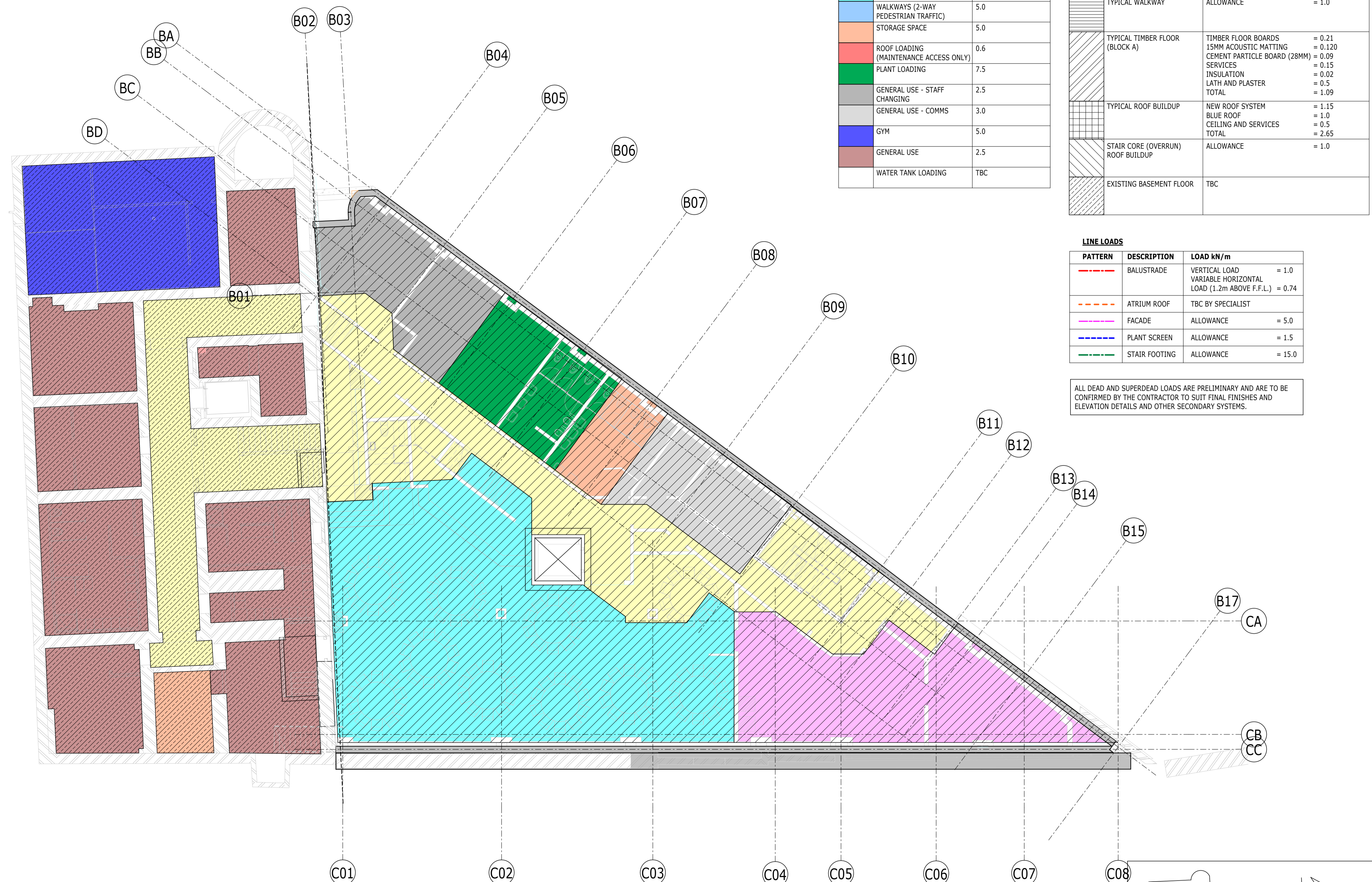
UNFACTORED SUPERIMPOSED DEAD LOAD

PATTERN	DESCRIPTION	LOAD kN/m <sup>2</sup>
[Diagonal Hatching]	NEW BASEMENT FLOOR	75mm thk SCREED = 1.9 INSULATION & DRAINED CAVITY SYSTEM = 0.5kN/m LOWER SCREED = 1.9
[Cross Hatching]	TYPICAL FLOOR BUILDUP	75mm SCREED = 1.9 ALLOW FOR CEILING & SERVICES = 0.5 TOTAL = 2.4
[Horizontal Hatching]	TYPICAL WALKWAY	ALLOWANCE = 1.0
[Vertical Hatching]	TYPICAL TIMBER FLOOR (BLOCK A)	TIMBER FLOOR BOARDS = 0.21 15MM ACOUSTIC MATTING = 0.120 CEMENT PARTICLE BOARD (28MM) = 0.09 SERVICES = 0.15 INSULATION = 0.02 LATH AND PLASTER = 0.5 TOTAL = 1.09
[Grid Hatching]	TYPICAL ROOF BUILDUP	NEW ROOF SYSTEM = 1.15 BLUE ROOF = 1.0 CEILING AND SERVICES = 0.5 TOTAL = 2.65
[Diagonal Hatching]	STAIR CORE (OVERRUN) ROOF BUILDUP	ALLOWANCE = 1.0
[Diagonal Hatching]	EXISTING BASEMENT FLOOR	TBC

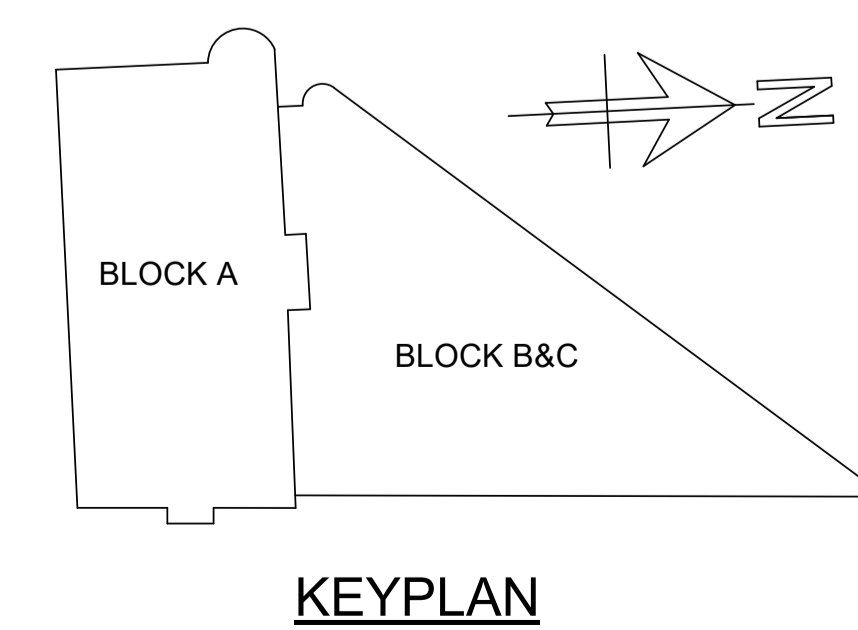
LINE LOADS

PATTERN	DESCRIPTION	LOAD kN/m
[Red Dashed]	BALUSTRADE	VERTICAL LOAD = 1.0 VARIABLE HORIZONTAL LOAD (1.2m ABOVE F.F.L.) = 0.74
[Orange Dashed]	ATRIUM ROOF	TBC BY SPECIALIST
[Pink Dashed]	FACADE	ALLOWANCE = 5.0
[Blue Dashed]	PLANT SCREEN	ALLOWANCE = 1.5
[Green Dashed]	STAIR FOOTING	ALLOWANCE = 15.0

ALL DEAD AND SUPERDEAD LOADS ARE PRELIMINARY AND ARE TO BE CONFIRMED BY THE CONTRACTOR TO SUIT FINAL FINISHES AND ELEVATION DETAILS AND OTHER SECONDARY SYSTEMS.



PLAN  
1 : 100  
LP-LEVEL B1



P02	PLANNING & LBC ISSUE	16/12	JC	PM
P01	PRELIMINARY DRAFT ISSUE	20/12	AC	PM
Rev	Description	Date	By	App
			Chk	

S3 - FOR REVIEW AND COMMENT

THE GEORGE HOTEL  
HUDDERSFIELD



LOADING PLAN  
BASEMENT LEVEL

Project No:	Scale (@ A1):	Date:	Drawn:
1620014217	1 : 100	NOV'22	JC
Drawing No:	Rev:		
4217-RAM-ZZ-B1-DR-S-00170	P02		