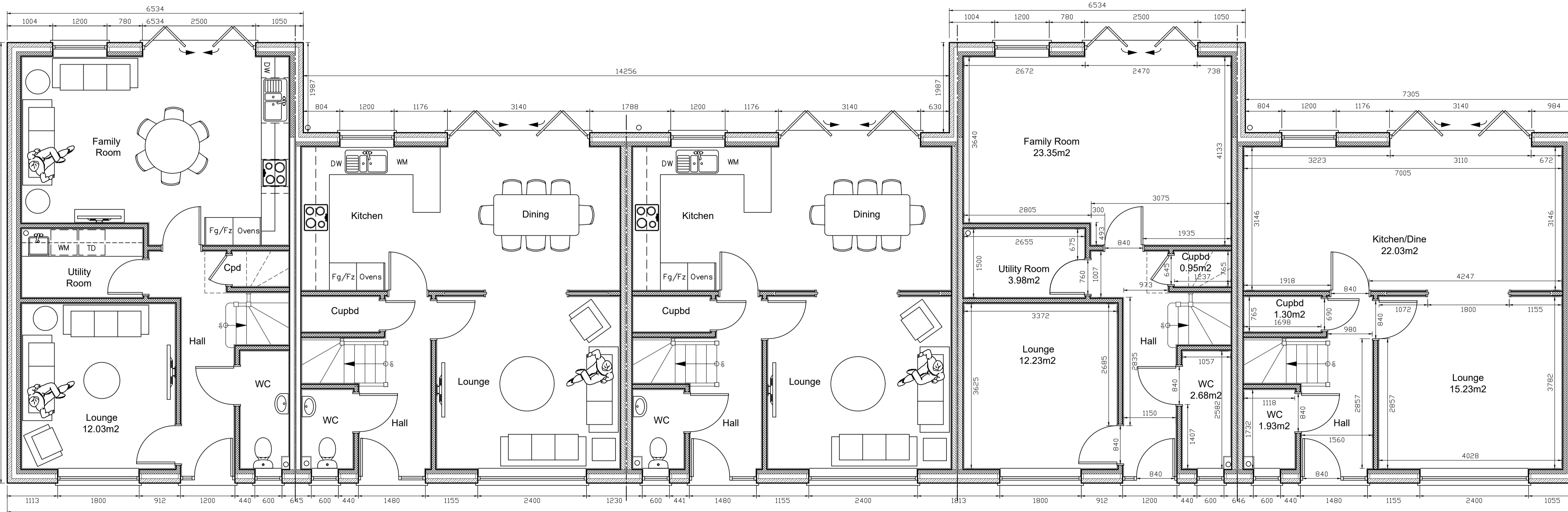


FIRST FLOOR PLANS (1:50)

First Floor Plan



GROUND FLOOR PLANS (1:50)

Ground Floor Plan

House Type B  
3 Bed Terrace  
Int Flr Area  
107.03 m<sup>2</sup>  
1152 ft<sup>2</sup>  
  
Ext Flr Area  
121.52 m<sup>2</sup>  
1308 ft<sup>2</sup>

House Type C  
3 Bed Terrace  
Int Flr Area  
99.77 m<sup>2</sup>  
1074 ft<sup>2</sup>  
  
Ext Flr Area  
112.96 m<sup>2</sup>  
1216 ft<sup>2</sup>

House Type C  
3 Bed Terrace  
Int Flr Area  
99.77 m<sup>2</sup>  
1074 ft<sup>2</sup>  
  
Ext Flr Area  
112.96 m<sup>2</sup>  
1216 ft<sup>2</sup>

House Type B  
3 Bed Terrace  
Int Flr Area  
107.03 m<sup>2</sup>  
1152 ft<sup>2</sup>  
  
Ext Flr Area  
121.52 m<sup>2</sup>  
1308 ft<sup>2</sup>

House Type C  
3 Bed Terrace  
Int Flr Area  
99.77 m<sup>2</sup>  
1074 ft<sup>2</sup>  
  
Ext Flr Area  
112.96 m<sup>2</sup>  
1216 ft<sup>2</sup>

**NOTES**  
All dimensions must be checked on site and not scaled from this drawing, except for planning  
Any discrepancy found between drawings or details should be reported to DesignHouse as soon as possible where the correct information will be given.

**ACCOMMODATION:** (Internal Areas)  
**Terrace of Five Dwellings:**  
2No. 3 bed Terraced Houses (107.03m<sup>2</sup>)  
3B/5P - With two parking spaces each  
3No. 3 bed Terraced Houses (99.77m<sup>2</sup>)  
3B/5P - With two parking spaces each

Rev	Date	Revision
D	28.06.22	Full terrace redesigned
C	21.04.22	Gable over balcony added
B	20.04.22	Elevations added
A	16.03.22	Integral garage removed

Copyright retained by DesignHouse

**DesignHouse**  
74 Victoria Street  
Dunstable  
Bedfordshire  
LU6 3BA  
Phone/Fax: 07860 798939  
e-mail - mail@kevinpatrick.co.uk

Client  
**Leyton Homes (Mirfield) Ltd**  
  
Job Title  
**New Residential Development  
At Land Adjacent To:  
894 Huddersfield Road  
Mirfield, WF14 9HS**

Drawing Title  
**Top Terraced Houses  
(Houses Type 'B' & 'C')  
Proposed Plans &  
Dimensions**

Scale **1:50 @ A1**  
Date **Mar 2022** Drawn By **KJP**

**For Planning**

Drwg No. <b>21/6320/08</b>	Rev. <b>D</b>
-------------------------------	------------------