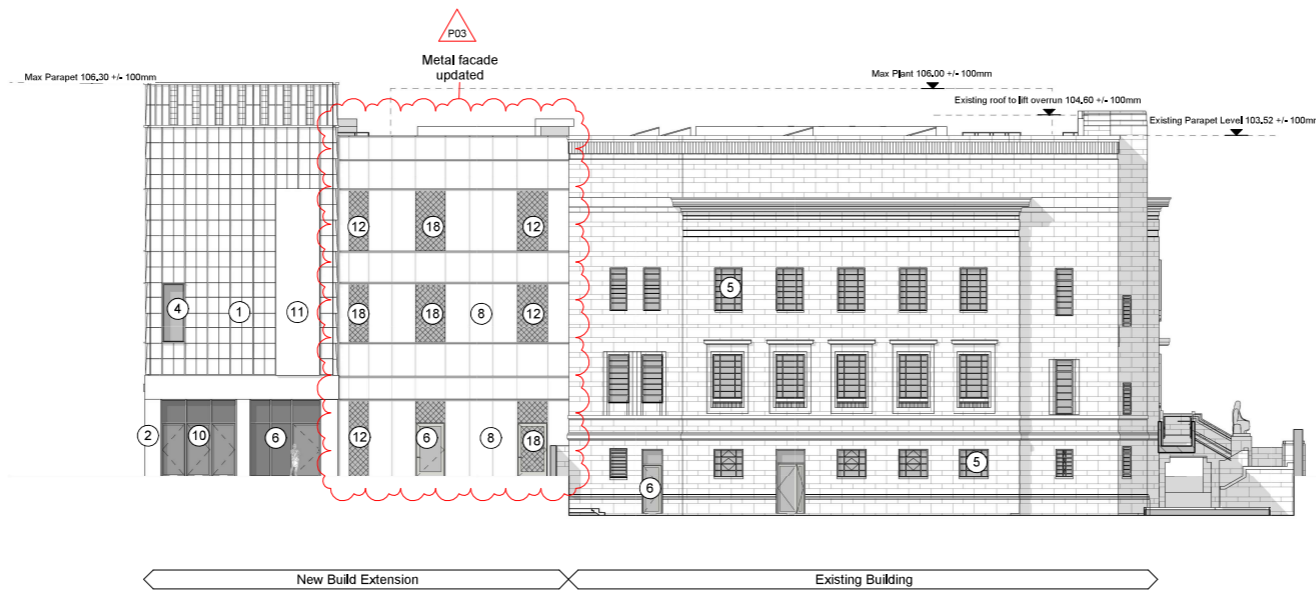


3 Proposed South Elevation
1 : 200



4 Proposed West Elevation
1 : 200

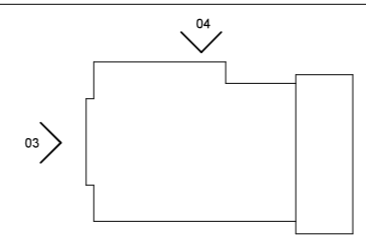
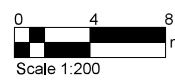
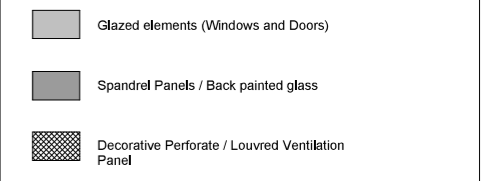
Elevation Key

1. Stone vertical fin, lapped panel and coping
2. Solid stone cladding
3. Stone vertical fin with ventilation opening at parapet
4. Dark metal capped windows and curtain walling system (glazing toned grey).
5. Secondary metal framed double glazed units installed behind existing windows for thermal improvements. Refer to Design and Access statement and 030140 Conservation Strategy Drawings for information and full extents.
6. Dark metal capped glazed and solid metal door systems
7. Solid glazed spandrel panel in window/ curtain walling system
8. Dark metal rainscreen cladding fin, panel and coping.
9. Dark metal bridge/ ramp
10. Shop style exhibition/ display windows
11. Signage – type and extent tbc by condition
12. Dark metal decorative perforate / louvred panel
13. Existing window with blanking panel behind
14. Museum curated signage and artwork- design to be developed and agreed via condition
15. Renewal of existing signage – design to be developed and agreed via condition (Area shown dotted)
16. Zone for discrete fixings to stone face to allow for installation of temporary signage – design to be developed and agreed via condition (Area shown dotted)
17. Dark metal capped glazed and solid metal door systems with dark metal decorative perforate to front
18. Dark metal decorative perforate with glazed window behind

- ▲ P03 Updated
- ▲ P03 Added
- ▲ P03 Added

Notes:

- Dimensions are not to be scaled from this drawing.
- Drawing only to be used for the purposes it was issued for.
- Landscape, public realm and neighbouring buildings shown indicatively.
- Existing locations and footprints of surrounding buildings are taken from: (OS Map - Promap-1634985-1735589-720-0.dwg) received 2021.10.27; (21359-100-Topo-Millimetres.dwg) received from Maltby Surveys on 2022.02.23
- Existing building plans and elevations are based on Maltby Surveys drawings received on 2022.02.18 and 2022.03.15
- Scope of fabric removal, demolition and repair is not shown on these elevations. For such items and stonework detailing, refer to 030140 Conservation Strategy Drawings, and 030180 Envelope Repairs series drawings.



FelldenCleggBradleyStudios
LLP
London Office
Tottenham Street
London
W1T 4RG
t +44 20 7323 5737
e london@fcbstudios.com

Rev	Status	Date
P01	S2 Issued for Planning and Listed Building Consent Approval	30/09/22
P02	S2 Issued for Planning and Listed Building Consent Approval	01/12/22
P03	S2 Issued for Planning and Listed Building Consent Approval	02/02/23

Job/Drawing No	Revision
IR430300-FCB-XX-XX-DR-A-030801	P03
Kirklees Cultural Heart Huddersfield Museum - Proposed South and West Elevation	Status S2
Scale As indicated@A1 Date 30.09.22	Drawn London Studio Checked Group AW FCBS project no IR430300

Do not scale All dimensions to be checked on site