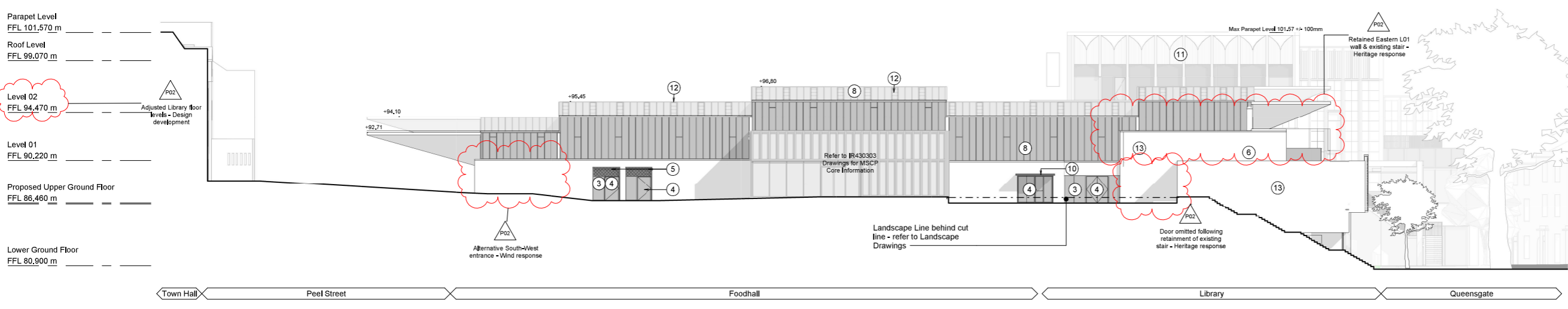
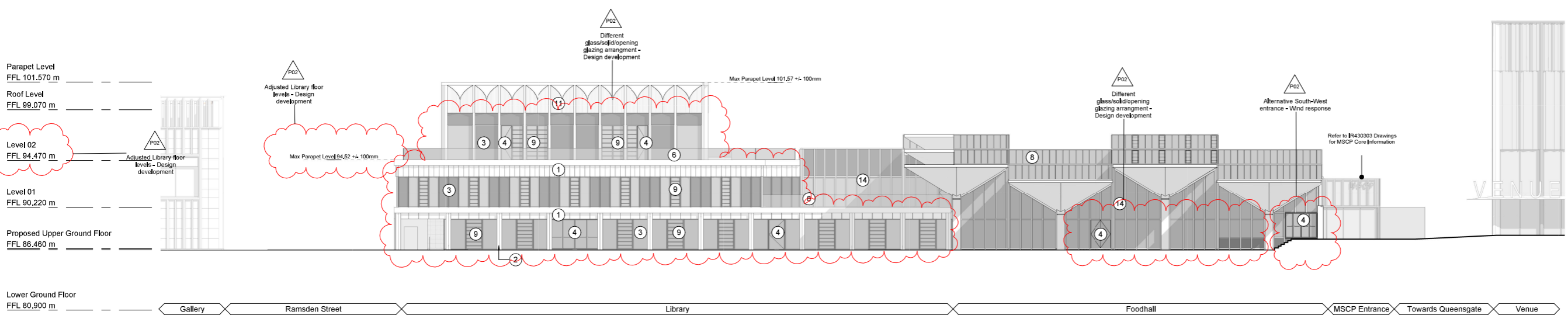


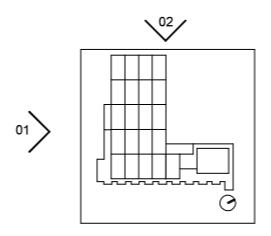
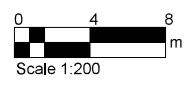
- ### Elevation Key and Notes
- Precast concrete fascia, profiled panels & coping cladding
 - Decorative precast concrete columns
 - Dark metal capped windows and curtain walling system (opaque insulated glazing toned darker grey).
 - Dark metal capped glazed and solid metal door systems
 - Decorative metal ventilation and plant screen louvres
 - Clear glazed balustrade
 - Replacement of the existing system with new thermally broken curtain wall mounting double glass unit, with integrated single/double doors & windows, (Opaque insulated glazing toned darker grey)
 - Existing clerestory glazing - New curtain walling to match fenestration and aesthetic of original hung patent glazing
 - Library glazed louvred window with dark metal outer frame.
 - Metal canopy
 - Precast concrete profiled panels
 - Glazed louvred curtain walling panels to renewed clerestory windows.
 - Improvement of thermal performance of existing solid facade with additional internal layer of insulation
 - Curtain Wall System to Food Hall (opaque glazing with solid insulated panels toned darker grey). Double glazed timber stick system with anodised aluminium capping. Integrated Double doors & top hung windows.
 - Flat Stone rainscreen cladding to match existing
 - Existing stairs with new metal balustrade with vertical flats
 - Signage - type and extent tbc by condition
 - Stone clad door to match existing stone wall
 - Existing window to be replaced with top hung openable window with timber frame and anodised aluminium capping.
 - Dark metal perforated roller shutter
- Movement and Bespoke Assemblies—each shall moved independently of its neighbour. Bespoke made movement assemblies will be required at each interface.
- Note, scope of fabric removal/demolition is not shown on these elevations
- Glazed elements (Windows and Doors)
 - Spandrel Panels / Back Painted Glass
 - Louvred / Ventilation Panel
- Dimensions are not to be scaled from this drawing
 - Drawing only to be used for the purposes it was issued for
 - Landscape, public realm and neighbouring buildings shown indicatively
 - Existing locations and footprints of surrounding buildings are taken from; (OS Map - Promap-1634985-1735589-720-0.dwg) received 2021.10.27, (21359-100-Topo-Millimetres.dwg) received from Malby Surveys on 2022.02.23
 - Existing building plans and elevations are based on Malby Surveys drawings received on 2022.02.18 and 2022.03.15



1 South-Elevation
1 : 200



2 West-Elevation
1 : 200



FeldenCleggBradleyStudios
LLP
London Office
Tottenham Street
London
W1T 4RG
t +44 20 7323 5737
e london@fcbstudios.com

Rev	Status	Date
P01	S2 Issued for Planning and Listed Building Consent Approval	30/09/22
P02	S2 Issued for Planning and Listed Building Consent Approval	01/12/22

Job/Drawing No	Revision
IR430301-FCB-XX-XX-DR-A-040801	P02
Kirklees Cultural Heart Huddersfield Library - Proposed Elevation South and West	Status S2
Scale 1 : 200@A1 Date 30/09/22	Drawn London Studio Checked London Studio FCBS project no IR430301

Do not scale All dimensions to be checked on site