

Level Roof
FFL 102.500 m

Level 02
FFL 97.400 m

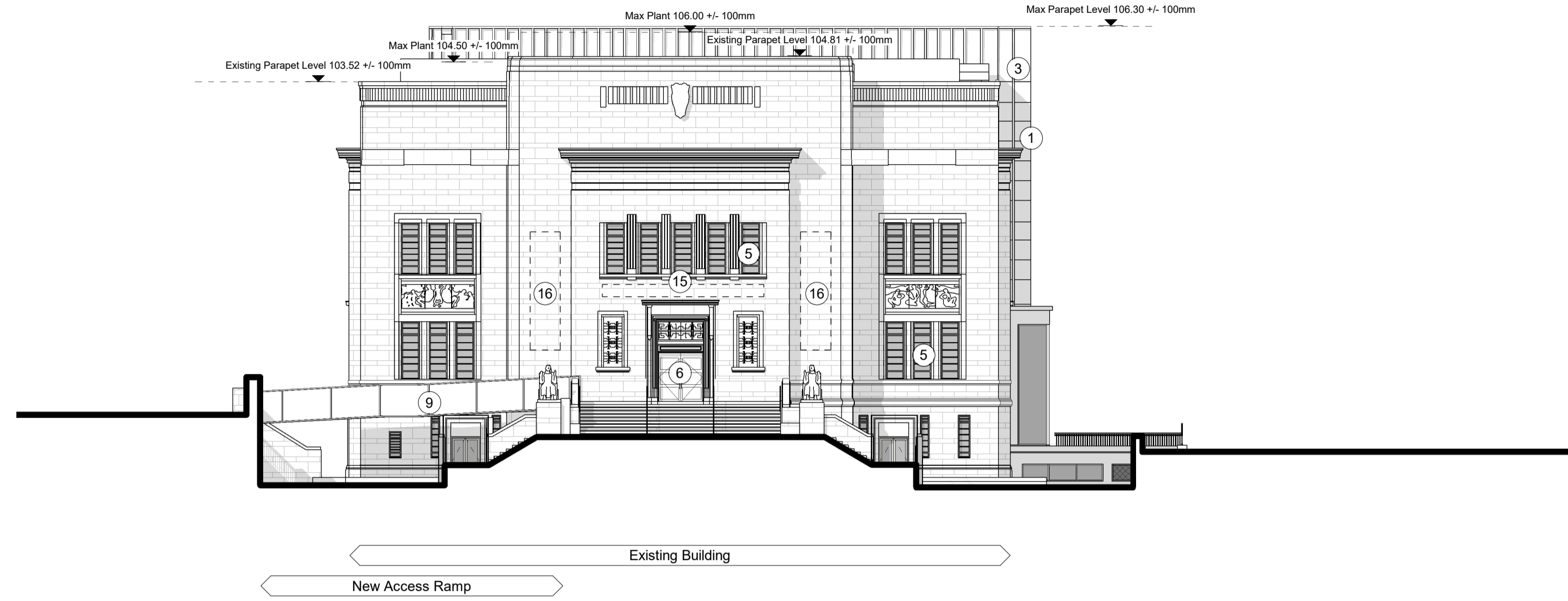
Level 01
FFL 92.500 m

Level Upper Ground South
FFL 87.600 m

Level Upper Ground North
FFL 85.500 m

Level Lower Ground South
FFL 83.500 m

Level Lower Ground North
FFL 80.500 m



3 Proposed South Elevation
1 : 200

Level Roof
FFL 102.500 m

Level 02
FFL 97.400 m

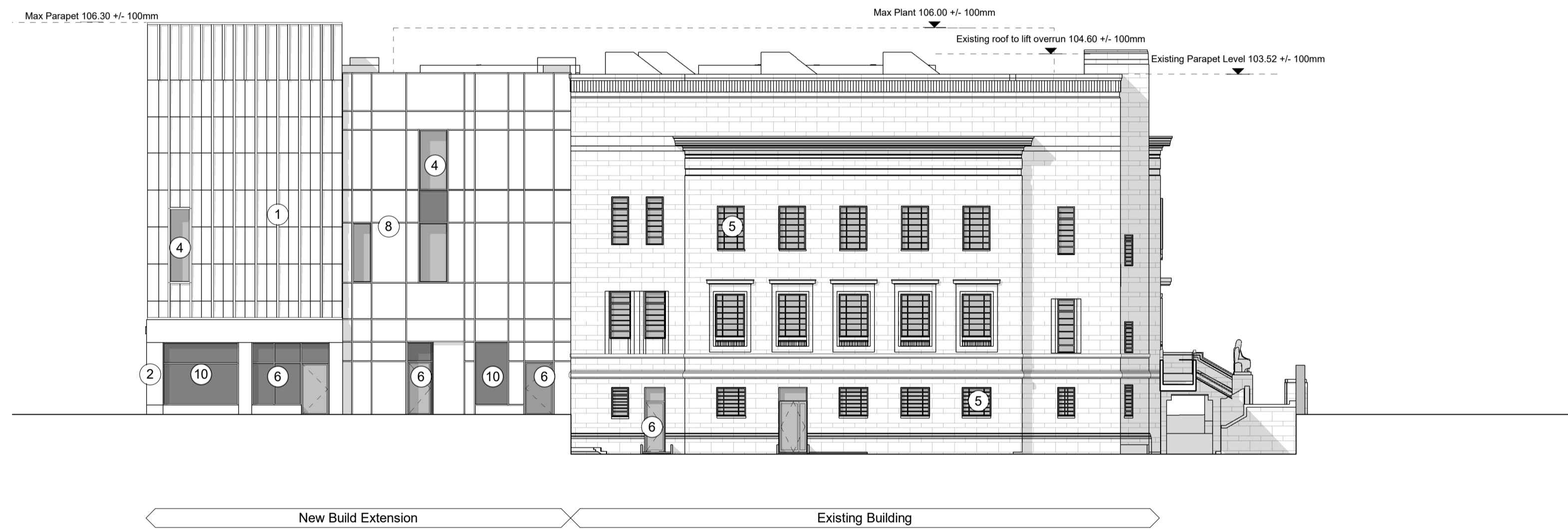
Level 01
FFL 92.500 m

Level Upper Ground South
FFL 87.600 m

Level Upper Ground North
FFL 85.500 m

Level Lower Ground South
FFL 83.500 m

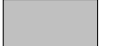
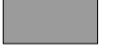

Level Lower Ground North
FFL 80.500 m



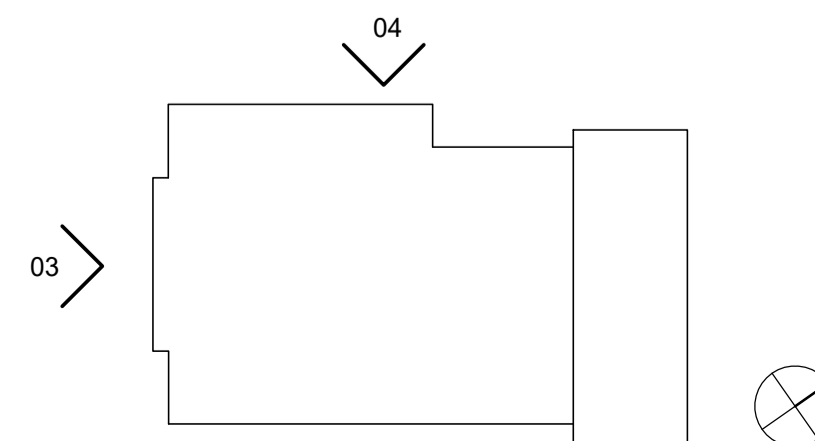
4 Proposed West Elevation
1 : 200

- Elevation Key**
1. Stone vertical fin, lapped panel and coping
 2. Solid stone cladding
 3. Stone vertical fin with ventilation opening at parapet
 4. Dark metal capped windows and curtain walling system (glazing toned grey).
 5. Secondary metal framed double glazed units installed behind existing windows for thermal improvements. Refer to Design and Access statement and 030140 Conservation Strategy Drawings for information and full extents.
 6. Dark metal capped glazed and solid metal door systems
 7. Solid glazed spandrel panel in window/ curtain walling system
 8. Dark metal rainscreen cladding fin, panel and coping.
 9. Dark metal bridge/ ramp
 10. Shop style exhibition/ display windows
 11. Signage – type and extent tbc by condition
 12. Dark metal louvred panel
 13. Existing window with blanking panel behind
 14. Museum curated signage and artwork– design to be developed and agreed via condition
 15. Renewal of existing signage – design to be developed and agreed via condition (Area shown dotted)
 16. Zone for discrete fixings to stone face to allow for installation of temporary signage – design to be developed and agreed via condition (Area shown dotted)

- Notes:**
- Dimensions are not to be scaled from this drawing.
 - Drawing only to be used for the purposes it was issued for.
 - Landscape, public realm and neighbouring buildings shown indicatively.
 - Existing locations and footprints of surrounding buildings are taken from: (OS Map - Promap-1634985-1735589-720-0.dwg) received 2021.10.27; (21359-100-Topo-Millimetres.dwg) received from Maltby Surveys on 2022.02.23
 - Existing building plans and elevations are based on Maltby Surveys drawings received on 2022.02.18 and 2022.03.15
 - Scope of fabric removal, demolition and repair is not shown on these elevations. For such items and stonework detailing, refer to 030140 Conservation Strategy Drawings, and 030180 Envelope Repairs series drawings.

-  Glazed elements (Windows and Doors)
-  Spandrel Panels / Back painted glass
-  Louvred / Ventilation Panel

0 4 8
Scale 1:200



FeildenCleggBradleyStudios
LLP
London Office
Tottenham Street
London
W1T 4RG
t +44 20 7323 5737
e london@fcbstudios.com

Rev	Status	Date
P01	S2 Issued for Planning and Listed Building Consent Approval	30/09/22

Job/Drawing No
IR430300-FCB-ZZ-XX-DR-A-030801

Kirklees Cultural Heart
Huddersfield Museum - Proposed South and West Elevation

Scale As indicated@A1
Date 30.09.22

Drawn London Studio
Checked Group AW

FCBS project no
IR430300

Do not scale All dimensions to be checked on site