

**ENVELOPE REPAIRS KEY**

Drawing to be read in conjunction with 030140 and 030160 Conservation Strategy series and other supporting documents submitted as part of the application.

- REMOVAL** - Removal of existing fabric for dismantling / removal / demolition.
- SA  Putlog scaffold anchor - remove and make good.
- CR  Crack / open joint - investigate / remediate.
- FM Ferrous material - remove

- RENEWAL** of existing fabric - Replace / repair with new elements as described.
- Descaling - Where the surface is powdery and friable, remove loose stone and prepare the exposed face with a stiff brush / scotch chisel. With ashlar use a carborundum block.

- ENHANCEMENT / ALTERATION** of existing fabric - Enhancement / alteration as described. Carefully dismantle any masonry that is in-place. Rebuild with existing and new masonry to form a complete element sufficient to form part of the envelope of the building.

- Redressing - Where the surface damage is superficial, or loose friable stone needs removing back to a sound base. Stone is to be dressed back to a sound free draining surface with tooling and carborundum blocks as appropriate.

- INTERVENTION** - Introduction of new elements as described.

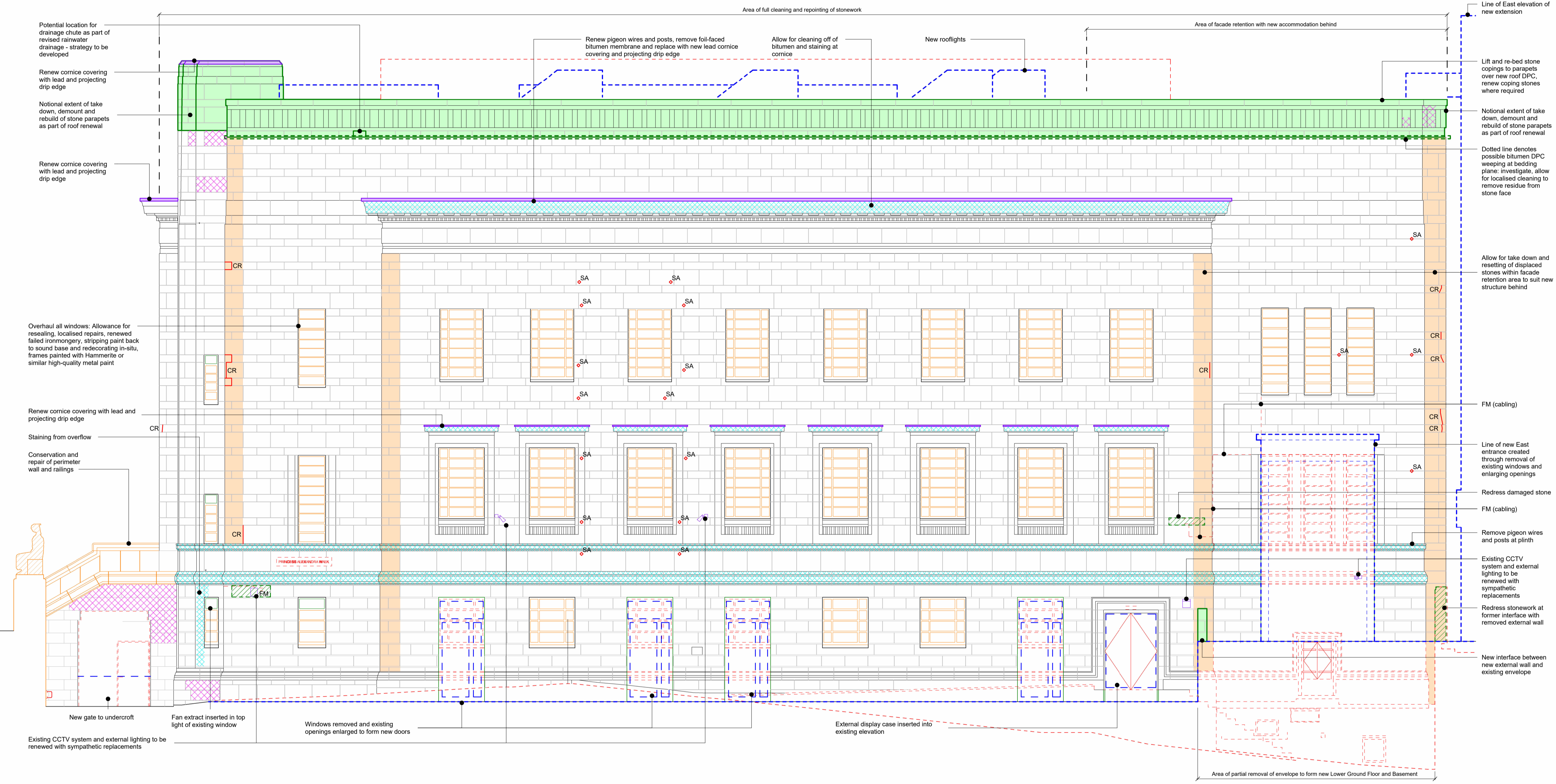
- CONSERVATION AND REPAIR**- Sympathetic repair and restoration of existing fabric as described.

- Conservation cleaning of artwork by specialist.
- Zone of displaced stones to be reset.

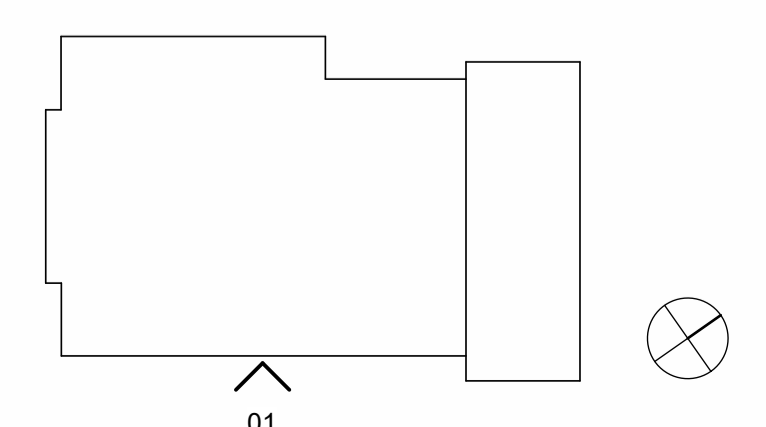
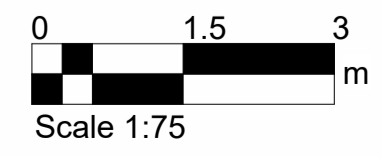
- Cleaning - Carefully clean stonework surface. Recommendation is for whole building clean. A reduced scope should include: parapets, string courses, hood moulds and other projecting features, window surrounds. Detailed cleaning specification to be developed subject to survey.

**EXISTING SIGNAGE KEY:**

- S1** James Mason commemorative plaque (c. 1996)
- S2** Dedication stone (original)
- S3** Library opening times (modern)
- S4** Yorkshire Society Lord Rievaulx commemorative plaque (post 1996)
- S5** '95' plaque (modern)
- S6** Nelson Mandela Corner dedication stone (c. 1990s)
- S7** 'Library & Art Gallery' signage (modern)



**1 Envelope Repairs - East Elevation**  
1:75



FeildenCleggBradleyStudios  
LLP  
London Office  
Tottenham Street  
London  
W1T 4RG  
t +44 20 7323 5737  
e london@fcstudios.com

Rev	Status	Date
P01	S2 Issued for Planning and Listed Building Consent Approval	30/09/22

Job/Drawing No  
**IR430300-FCB-ZZ-XX-DR-A-030182**

Kirklees Cultural Heart  
Huddersfield Museum - Envelope Repairs - East Elevation

Scale As indicated@A1  
Date 30.09.22  
Drawn London Studio  
Checked Group AW

Revision  
**P01**  
Status  
**S2**

FCBS project no  
IR430300

Do not scale All dimensions to be checked on site