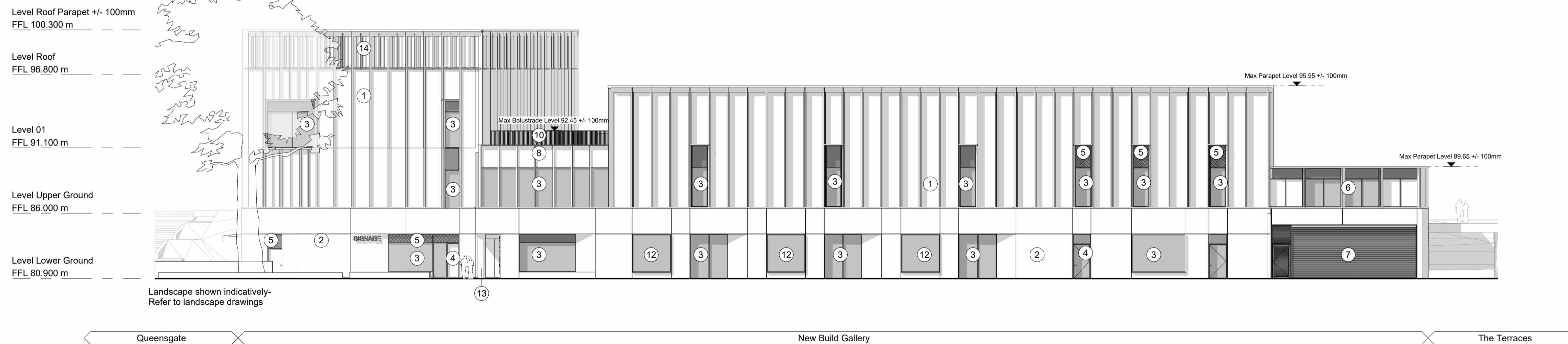
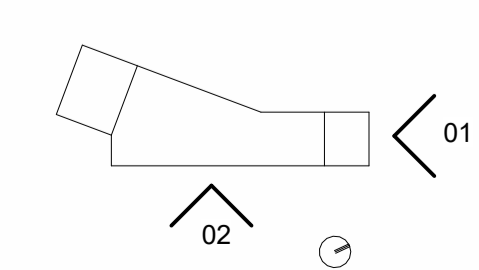
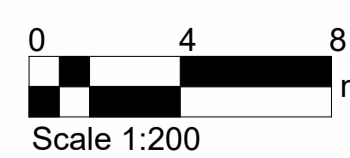


1 Proposed North-Elevation
1 : 200



2 Proposed East-Elevation
1 : 200

- Elevation Key and Notes**
1. Stone vertical fin, flat panel and coping
 2. Solid stone cladding
 3. Dark metal capped windows and curtain walling system (glazing toned grey). Dark metal spandrel panels
 4. Dark metal capped glazed and solid metal door systems
 5. Dark metal decorative ventilation and plant screen louvres
 6. Stone fin and coping with decorative perforated dark metal panelling and glazing to courtyard terrace
 7. Dark metal perforated roller shutter
 8. Dark metal rainscreen cladding fin, panel and coping.
 9. Dark metal circular sliding glazed door
 10. Dark metal balustrade
 11. Signage - type and extent tbc by condition
 12. Shop style exhibition/ display windows
 13. Stone circular column, finish to match solid stone cladding
 14. Stone vertical fin ventilation opening at parapet
- Dimensions are not to be scaled from this drawing
 - Drawing only to be used for the purposes it was issued for
 - Landscape, public realm and neighbouring buildings shown indicatively
 - Existing locations and footprints of surrounding buildings are taken from: (OS Map - Promap-1634985-1735589-720-0.dwg) received 2021.10.27; (21359-100-Topo-Millimetres.dwg) received from Maltby Surveys on 2022.02.23
 - Existing building plans and elevations are based on Maltby Surveys drawings received on 2022.02.18 and 2022.03.15
- Glazed elements (Windows and Doors)
 Metal Spandrel Panels Above Windows
 Louvred / Ventilation Panel



FeildenCleggBradleyStudios
LLP
London Office
Tottenham Street
London
W1T 4RG
t +44 20 7323 5737
e london@fcbstudios.com

Rev	Status	Date
P01	S2	30/09/2022

Job/Drawing No
IR430320-FCB-XX-XX-DR-A-060800

Kirklees Cultural Heart
Huddersfield Gallery - Proposed Elevation North and East

Scale 1 : 200@A1
Date 30/09/22
Drawn London Studio
Checked London Studio
FCBS project
no IR430320

Do not scale All dimensions to be checked on site