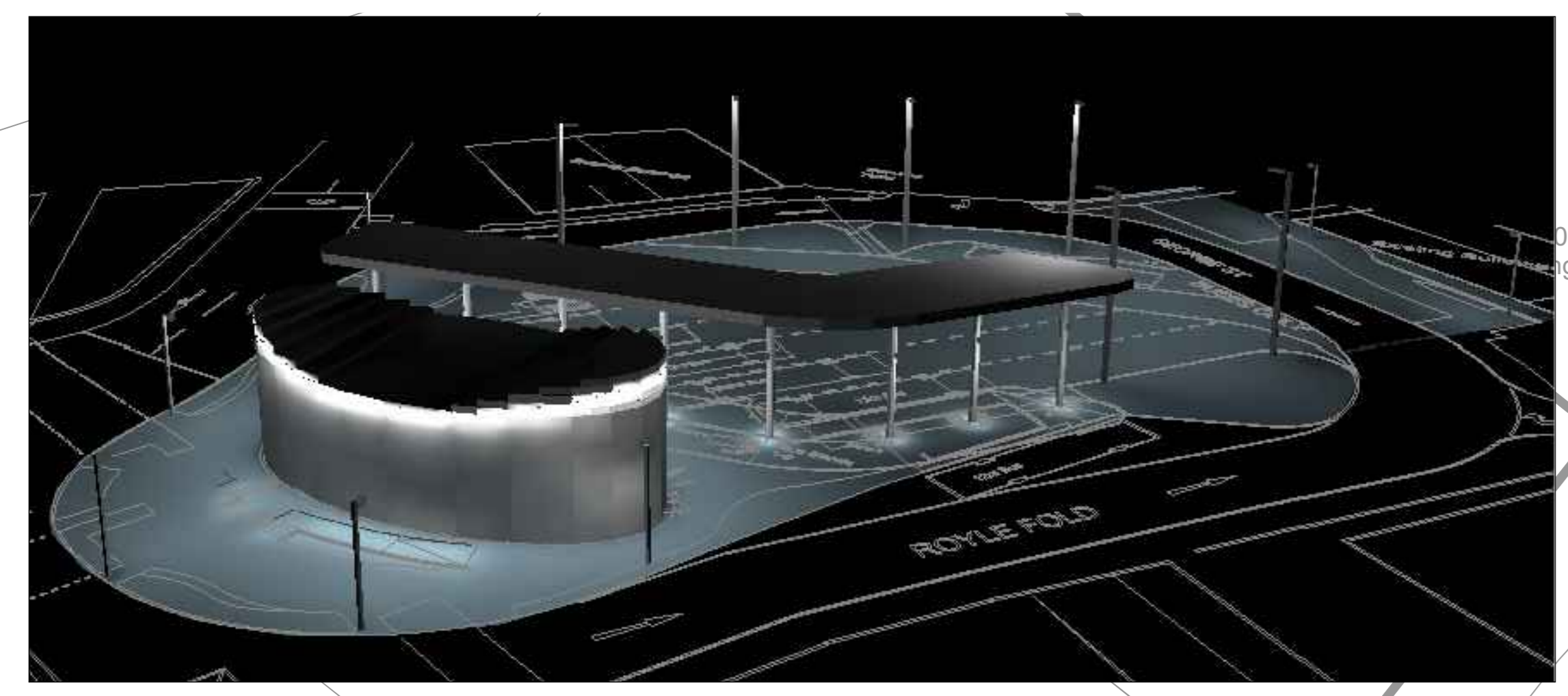


DETAIL 1: SITE-WIDE 3D-VIEW



CONTRACTOR SHALL MAKE AN ALLOWANCE FOR GROUND-MOUNTED ARCHITECTURAL DIRECTIONAL LED UPLIGHTER LUMINAIRES WITHIN THE FLOWERBEDS TO ILLUMINATE THE EXTERNAL ARTWORK. ASSOCIATED DUCTWORK, CABLING, AND CIRCUIT PROTECTIVE DEVICES SHALL BE INCLUDED.

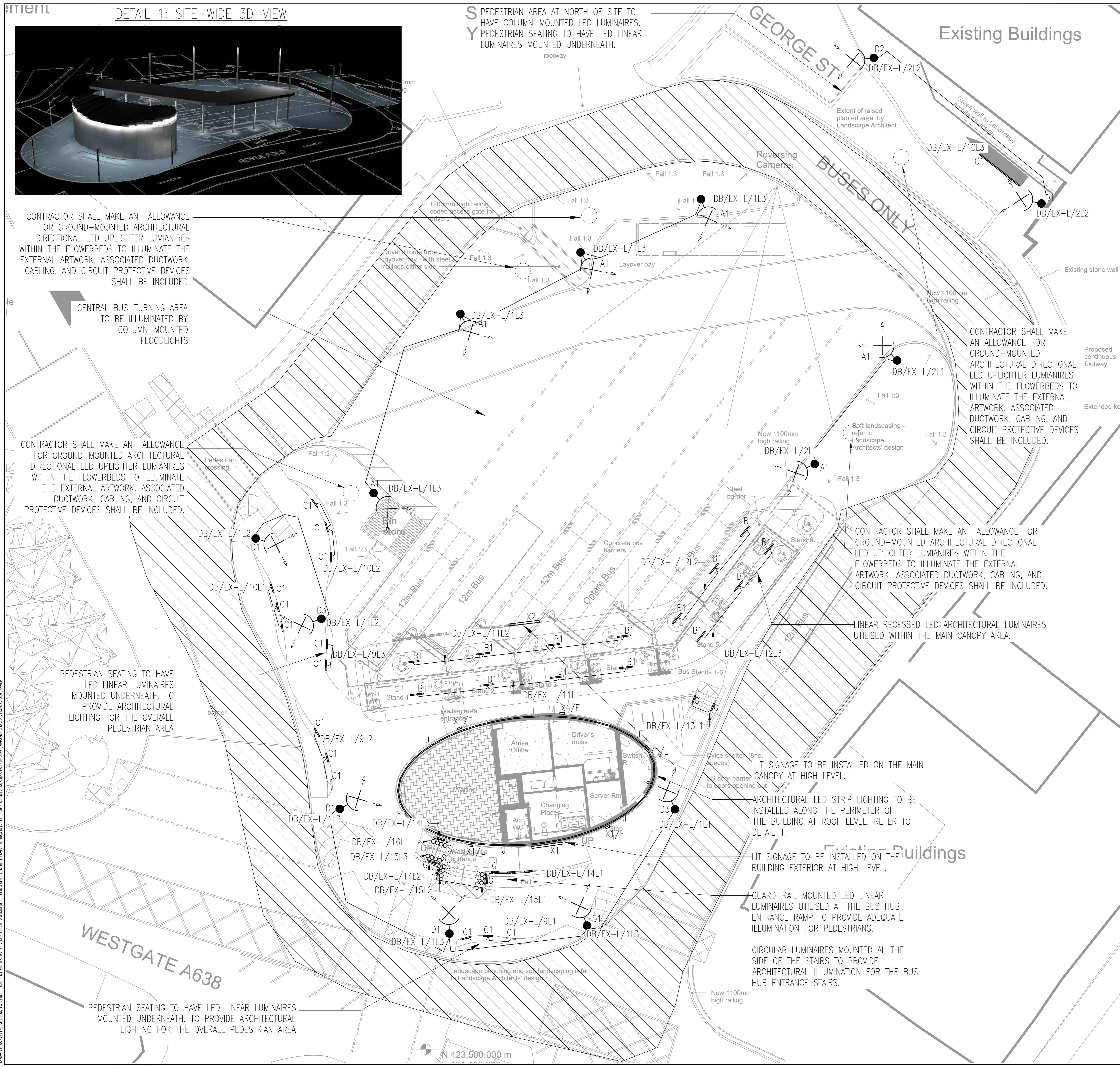
CENTRAL BUS-TURNING AREA TO BE ILLUMINATED BY COLUMN-MOUNTED FLOODLIGHTS

CONTRACTOR SHALL MAKE AN ALLOWANCE FOR GROUND-MOUNTED ARCHITECTURAL DIRECTIONAL LED UPLIGHTER LUMINAIRES WITHIN THE FLOWERBEDS TO ILLUMINATE THE EXTERNAL ARTWORK. ASSOCIATED DUCTWORK, CABLING, AND CIRCUIT PROTECTIVE DEVICES SHALL BE INCLUDED.

PEDESTRIAN SEATING TO HAVE LED LINEAR LUMINAIRES MOUNTED UNDERNEATH. TO PROVIDE ARCHITECTURAL LIGHTING FOR THE OVERALL PEDESTRIAN AREA

PEDESTRIAN SEATING TO HAVE LED LINEAR LUMINAIRES MOUNTED UNDERNEATH. TO PROVIDE ARCHITECTURAL LIGHTING FOR THE OVERALL PEDESTRIAN AREA

PEDESTRIAN AREA AT NORTH OF SITE TO HAVE COLUMN-MOUNTED LED LUMINAIRES. PEDESTRIAN SEATING TO HAVE LED LINEAR LUMINAIRES MOUNTED UNDERNEATH.



LUMINAIRE IMAGE LEGEND	
A1	
B1	
C1	
D1	
D2	
D3	
G	
J	
S	

HATCH BOUNDARY LEGEND	
	AREA SURROUNDING SITE BOUNDARY TO HAVE MINIMAL OVERSPILL FROM THE EXTERNAL LIGHTING SCHEME. EXISTING ROAD AREAS TO BE ILLUMINATED BY STREET LIGHTING.

LIGHTING CONTROLS

THE LIGHTING COLUMNS DENOTED AS "A" AND "D" FITTINGS SHALL FALL UNDER THE OWNERSHIP OF THE STREET LIGHTING DEPARTMENT IN KIRKLEES COUNCIL. THEY SHALL BE SEPARATELY METERED WITHIN THE SWITCHROOM SO THAT THE ENERGY EXPENDITURE COSTS CAN BE RECLAIMED BY THE ASSET/BUILDING DEPARTMENT.

THE SYSTEM SHALL UTILIZE A TIME-CLOCK, AND PHOTOCELL WHERE POSSIBLE. THIS SHALL ENSURE LUMINAIRES WILL TURN OFF/ON DEPENDING ON THE TIME OF DAY AND DAYLIGHT LEVELS.

LIGHTING LEVELS ARE IN LINE WITH THE BS 12464 DOCUMENTS AND LG LIGHTING GUIDES FOR EXTERNAL LIGHTING.

ALL EXTERNAL LIGHTING USED, ESPECIALLY FITTING "C1", SHALL BE OF THE VARIANT TO BE CAPABLE OF BEING SUPPLIED FROM THE REQUIRED RANGE/DISTANCE. THIS ALLOWABLE RANGE WOULD BE IDEALLY 100M OR MORE.

LUMINAIRE LEGEND	
A1	ALED CLIPPER 150W 18010LM 4000K FLOODLIGHT LED LUMINAIRE MOUNTED ON STANDARD KIRKLEES COUNCIL 10M STREET LIGHTING POLE.
B1	ISUZZINI LINEALUCE MINI 47 13W 1800LM IP66 4000K DALI-DIMMABLE ARCHITECTURAL LED LINEAR RECESSED LUMINAIRE MOUNTED UNDER-CANOPY PANEL SYSTEM IN GREY RAL7016 COLOUR FINISH.
C1	DW WINDSOR VAO ECO MONOCHROME 76LM/22LM/W IP67 4100K LINEAR LUMINAIRE MOUNTED UNDERNEATH SEATING WITHIN PEDESTRIAN AREAS. 750MM IN LENGTH AND 40MM IN HEIGHT.
D1	CU PHOSDO P511 49W 4944LM IP54 4000K LED LUMINAIRE MOUNTED ON STANDARD KIRKLEES COUNCIL 5M STREET LIGHTING COLUMN.
D2	CU PHOSDO P511 49W 4944LM IP54 4000K LED LUMINAIRE MOUNTED ON STANDARD KIRKLEES COUNCIL 5M STREET LIGHTING COLUMN. 1 X BRACKET MOUNTED CCTV TO BE ADDED ONTO THE COLUMN.
D3	CU PHOSDO P511 49W 4944LM IP54 4000K LED LUMINAIRE MOUNTED ON STANDARD KIRKLEES COUNCIL 5M STREET LIGHTING COLUMN. 2 X BRACKET MOUNTED CCTV TO BE ADDED ONTO THE COLUMN.
G	DW WINDSOR CARIA ASYMMETRIC 972LM IP66 IK10 4000K DALI-DIMMABLE LINEAR HAND-RAIL LUMINAIRE. 600MM IN LENGTH. IN STAINLESS STEEL FINISH.
J	OSRAM LINEARLIGHT FLEX PROTECT POWER 1200 1200LM/W 10.6W/M IP67 4000K DALI-DIMMABLE STRIP-LIGHTING LED LUMINAIRE MOUNTED AROUND PERIMETER OF BUILDING AT ROOF LEVEL. 1000MM IN LENGTH.
S	DW WINDSOR LIGHT POINT MONOCHROME WHITE IP67 K009 4000K CIRCULAR LED LUMINAIRE MOUNTED WITHIN SIDES OF ENTRANCE STAIRS. 60MM IN DIAMETER.
X1/E	WHITESHOP CONCERT EX65 IP65 12W OVER-DOOR SURFACE MOUNTED EMERGENCY BALANCED NON-MAINTAINED LUMINAIRE WITH 3HR EMERGENCY BATTERY PACK.
X2	BUILDING MOUNTED LIT-SIGNAGE SPECIFICATION TO BE AGREED WITH SIGNAGE SPECIALIST.
X3	CANOPY MOUNTED LIT-SIGNAGE SPECIFICATION TO BE AGREED WITH SIGNAGE SPECIALIST.

STANDARD NOTES:-			
PURPOSE OF DRAWING			
1. THE DRAWING SHALL BE READ IN CONJUNCTION WITH THE SPECIFICATION AND ALL OTHER RELEVANT DOCUMENTS AND DRAWINGS PROVIDED BY WSP.			
2. THE DRAWING INDICATES THE DESIGN INTENT FOR THE WORKS.			
3. THE DRAWING DOES NOT INDICATE THE PRECISE POSITION OF SERVICES AND SHOWS THE INTENDED LOCATIONS OF BUILDING SERVICES ITEMS AND SERVICE ROUTES IN SUCH DETAILS AS TO INDICATE THE DESIGN. THE DRAWING DOES NOT SHOW ALL COMPONENTS THAT MAY BE NECESSARY TO LOCATE SERVICES IN A FULLY COORDINATED MANNER.			
4. THE POSITION OF ALL CONNECTION POINTS, ACCESSORIES, EQUIPMENT AND OTHER BUILDING SERVICES ITEMS AS SHOWN ON THE DRAWING ARE APPROXIMATE AND FOR GUIDANCE IN THE PREPARATION OF THE TENDER.			
5. THE CONTRACTOR SHALL BE RESPONSIBLE FOR THE CO-ORDINATION OF THE INSTALLATION AND SHALL TAKE ACCOUNT OF ALL THE OTHER WORKS AND TRADES EITHER DURING OR PRIOR TO THEIR INCORPORATION INTO THE WORKS.			
6. COORDINATION WORKING DRAWINGS, INSTALLATION DRAWINGS AND BUILDERS WORK DRAWINGS SHALL BE PREPARED BY THE CONTRACTOR.			
7. WSP IS NOT RESPONSIBLE FOR THE DESIGN AND COORDINATION OF ACCESS PLATFORMS, ACCESS COVERS, GRATINGS, LADDERS, STAIRS, RAILS, AND PROTECTING ELEMENTS REQUIRED FOR FUTURE MAINTENANCE AND OPERATION OF THE WORKS.			
8. THE DRAWING SHALL BE USED FOR THE INTENDED PURPOSE ONLY AND WSP WILL NOT BE HELD RESPONSIBLE FOR ANY OTHER USE.			
DIMENSIONS			
1. DIMENSIONS SHALL NOT BE SCALED FROM THE DRAWING AND THE CONTRACTOR SHALL BE RESPONSIBLE FOR OBTAINING ALL DIMENSIONS AND LEVELS ON SITE FOR THE ACTUAL SETTING OUT OF THE WORKS.			
2. WSP IS NOT RESPONSIBLE FOR CHECKING DIMENSIONS ON SITE.			
3. WSP IS NOT RESPONSIBLE FOR SETTING OUT GRID LINES, BUILDING LINES ETC.			
4. WSP IS NOT RESPONSIBLE FOR DIMENSIONS USED IN THE ORDERING AND MANUFACTURING OF EQUIPMENT AND THIS SHALL BE THE RESPONSIBILITY OF THE CONTRACTOR.			
HEALTH AND SAFETY			
1. THE DRAWING SHALL BE READ IN CONJUNCTION WITH THE HEALTH AND SAFETY INFORMATION PROVIDED IN THE TENDER DOCUMENTATION AND/ OR WITHIN PRE-CONSTRUCTION INFORMATION.			
2. BEFORE COMMENCEMENT OF WORKS ASSOCIATED WITH THE DRAWING REFER TO ALL RELEVANT HEALTH AND SAFETY INFORMATION FOR THE WORKS INCLUDING RESIDUAL RISK INFORMATION.			
DRAWING STATUS			
STAGE 4			
Three White Rose Office Park, Millshaw Park Lane, Leeds, LS11 0DL Tel: +44 (0)113 355 6200 Fax: +44 (0)113 355 6201 www.wsp.com			
CLIENT:	KIRKLEES COUNCIL		
ARCHITECT:	SGP ARCHITECTS		
PROJECT:	HECKMONDWIKE BUS STATION		
TITLE:	ELECTRICAL SERVICES EXTERNAL AREAS LIGHTING & CONTROL STRATEGY LAYOUT		
SCALE @:	1:100	DRAWN:	JW
PROJECT NO:	70079085	DESIGNED:	KZ
DRAWING NO:	HBH-WSP-00-ZZ-DR-E-630102	DATE:	JUNE 2023
			REV:
			P11
© WSP Group Ltd			