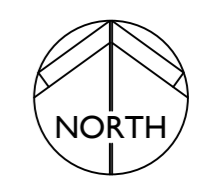


REVISION NOTES:

Following tree officer feedback, a design team meeting was held to consider the comments in detail. The layout has been revised as follows:

- A proposed realignment of the road between tree T31 and T32. The road will be positioned to minimise the impact to both trees. The construction would be outside the RPA and canopy spread of T32, which will allow this tree to be retained.
- The road and footpath would be constructed in the RPA of tree T31. The incursion would represent approximately 15% of the total RPA and would be located outside the canopy spread of the tree. In this location and at this distance from the tree, it is anticipated that any excavations for the road construction would only be likely to encounter small diameter roots. In our assessment the tree could remain viable, and the area lost to encroachment be compensated with uninterrupted green space to the north and east, contiguous with the RPA which will continue to sustain the tree (as per the BS5837 section 5.3.1). The tree protection fencing will be positioned to protect the extended rooting area to the north of the tree. To further minimise the impact to T31, the footpath will be subject to a specification for permeable 'no dig' construction, utilising a cellular confinement system (see method statement).
- Plot 41 – The house and drive has been moved outside the canopy and RPA of tree T33. This tree can now be fully protected, and the house could be constructed without the need for any pruning work.
- The positions of plots 28, 31, 37, 38 and 40 have also been adjusted to allow for future tree growth of retained trees G9. All proposed houses located to the north of tree and hedge group G9 have been moved 2m further north.
- Smeeden Foreman re-visited the site (21.07.2022) to re-evaluate the tree survey. Trees T30 to T36 have been subject to pruning works. The trees have been crown lifted and appear to be in good health at the time of the survey. The trees have been subsequently protected by a Tree Preservation Order, which will control any further pruning work.
- Tree group G9 has since been re-assessed in detail, recording individual trees. Tree group G9 has NOT been subject to any pruning works, however the updated assessment shows most of the existing trees within group G9 are smaller than previously recorded. Therefore, the smaller canopy and RPA in conjunction with the revised house layout means the retained trees can be fully protected during the construction, without the need for any pruning.
- The proposed drainage scheme has been revised in relation to retained trees. It is proposed to adjust the location of basin 1 and associated pipeline to protect retained trees.



Key

- Existing hedge
- Woodland retention category A**
High quality with an estimated life expectancy of at least 40 years
- Tree retention category A**
High quality with an estimated life expectancy of at least 40 years
- Tree retention category B**
Moderate quality with an estimated life expectancy of at least 20 years
- Tree retention category C**
Low quality with an estimated life expectancy of at least 10 years, OR young tree with a stem diameter below 150mm
- Tree removal category U**
Poor condition with an estimated life expectancy of less than 10 years
- RPA**
minimum Root Protection Area
- Proposed tree removal**
- Proposed hedgerow removal**
- Tree protection fencing see Detail 1 and method statement
- Footpath in RPA**
No dig construction/permeable surface - see Detail 2 and method statement.

Trees have been surveyed and categorized as per the recommendations and guidance in BS 5837:2012. Trees in relation to design, demolition and construction.

This drawing is to be reproduced in colour.

ARBORICULTURAL METHOD STATEMENT

TREE PROTECTION FENCING

Tree protection fencing must be installed in the position as shown on the Tree Protection Plan before any other works on site can be undertaken. Offsets have been dimensioned from existing fixed points to enable accurate setting out on site.

Tree Protection Fencing should be set out as per Section 6.2 of BS5837: 2012 and will comprise a scaffold framework, consisting of vertical and horizontal scaffolds with vertical tubes spaced at a maximum of 3m intervals and driven securely into the ground. Weld mesh (Heras or similar) panels will be securely fixed on to this framework with scaffold clamps. Tubes will be firmly fixed into holes in the ground made with post hole boring equipment. Bracing poles will be fixed to the inside of the barrier to ensure maximum rigidity, and should be located to avoid contact with structural roots.

See Detail 1 for details of the protective fencing to be employed in all circumstances, where existing site conditions allow. Fencing is to be erected as shown on the drawing. All fencing must be fixed in position with driven scaffold poles so that they cannot be moved during the construction period.

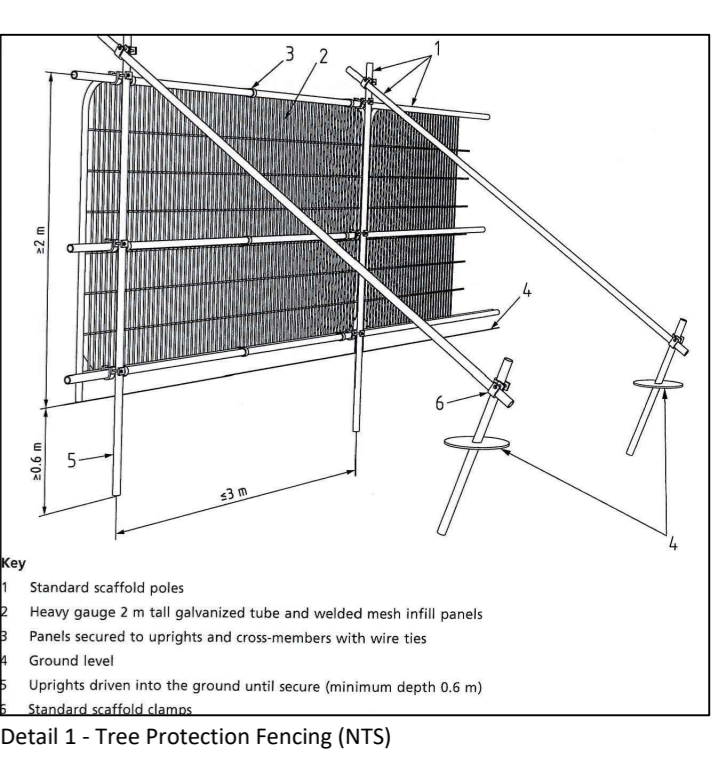
All-weather notices, A4 size, shall be attached to the tree protection fencing every 10m at 1.5m high with the words: 'Tree Protection Fence—strictly no access'.

FOOTPATH CONSTRUCTION IN THE RPA T31.

No dig construction with cellular confinement system (Cell web, or similar approved) to be installed and backfilled with clean aggregate, to be finished with porous paving.

The new surface must be established above the existing levels of the RPA. The ground must not be skimmed to establish the new hard surface at the former ground level. A geo-textile membrane will be laid out in position (to allow drainage and separation and prevent pollution of roots). A Cellular Confinement System (CCS) will be pinned out in position, using road pins and taking care to avoid any roots. The CCS will be backfilled with clean aggregate (no-fines stone to allow water percolation and gaseous exchange). The first layer of CCS must be filled by hand, to prevent any machinery from tracking over any unprotected root protection areas. The subsequent layers of CCS must be filled with machinery only running on filled CCS and not the exposed surface of the RPA, by starting work from outside the RPA, working inwards.

Construction will not be carried out during wet weather, and will be undertaken when the ground is driest and least prone to compaction.



FOR INFORMATION

Rev.	Date	Comments	Drawn	Chkd
C	17.10.22	Updated to include proposed swale	DR	MS
B	22.09.22	Updated to revised layout.	DR	MS

SMEEDEN FOREMAN
Landscape Architecture • Ecology • Arboriculture

Somerset House, Low Moor Lane, Scotton, Knaresborough, North Yorkshire, HG5 9JB
www.smeedenforeman.co.uk tel: 01423 863 369

Project Rowley Lane, Lepton

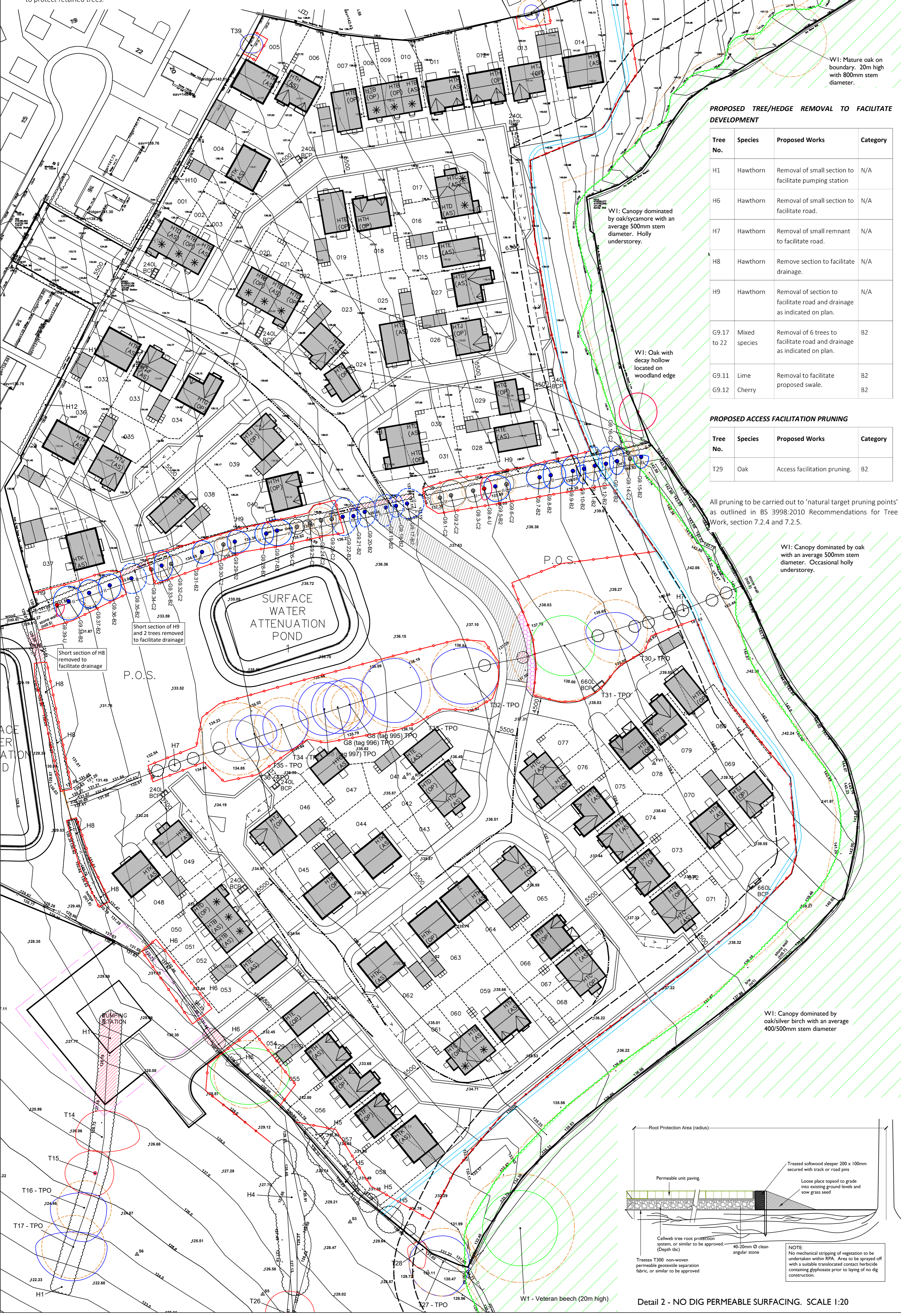
Title Tree Survey Plan

Project No. SF 2782	Drawing No. TPP01	Rev. C
Scale 1:500 @ A1	Date 08.09.22	
Drawn by DR	Checked by MS	

The details shown on this drawing are confidential and the drawing is the exclusive property of Smeeden Foreman Limited. Copyright reserved. No use, copy or disclosure of the drawing may be made without our permission and it is to be returned to Smeeden Foreman Limited when required. Smeeden Foreman Limited take no responsibility for the use of this drawing for any purpose other than that which it was intended.

All dimensions are in millimeters unless stated otherwise.
All dimensions should be verified on site prior to commencement of works.
Do not scale from this drawing.

All works must be in accordance with British Standards, EC Standards, Health & Safety at work act & all other relevant regulations & Bye Laws.
Any discrepancies should be brought to the attention of Smeeden Foreman Limited.



PROPOSED TREE/HEDGE REMOVAL TO FACILITATE DEVELOPMENT

Tree No.	Species	Proposed Works	Category
H1	Hawthorn	Removal of small section to facilitate pumping station	N/A
H6	Hawthorn	Removal of small section to facilitate road.	N/A
H7	Hawthorn	Removal of small remnant to facilitate road.	N/A
H8	Hawthorn	Remove section to facilitate drainage.	N/A
H9	Hawthorn	Removal of section to facilitate road and drainage as indicated on plan.	N/A
G9.17 to 22	Mixed species	Removal of 6 trees to facilitate road and drainage as indicated on plan.	B2
G9.11	Lime	Removal to facilitate proposed swale.	B2
G9.12	Cherry	Removal to facilitate proposed swale.	B2

PROPOSED ACCESS FACILITATION PRUNING

Tree No.	Species	Proposed Works	Category
T29	Oak	Access facilitation pruning.	B2

All pruning to be carried out to 'natural target pruning points' as outlined in BS 3998:2010 Recommendations for Tree Work, section 7.2.4 and 7.2.5.

