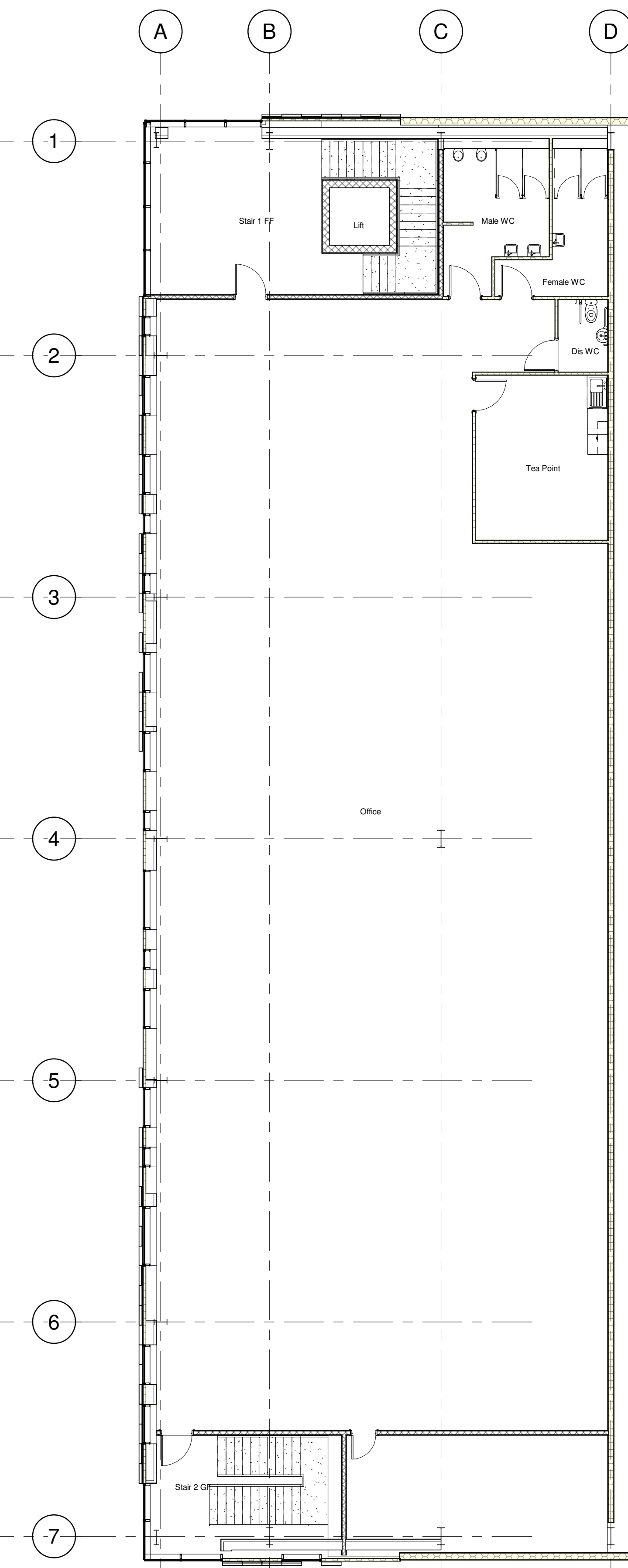


Proposed Ground Floor Plan
1 : 100



Proposed First Floor
1 : 100

| Area Schedule (Gross Building) | | | |
|--------------------------------|------------|-----------------------|-------------------------|
| Level | Name | Area | Area Sqft |
| Ground Floor | Industrial | 2836.7 m ² | 30533.7 ft ² |
| Ground Floor | Office | 392.9 m ² | 4229.3 ft ² |
| Ground Floor | Warehouse | 909.8 m ² | 9792.7 ft ² |
| First Floor | Office | 663.2 m ² | 7139.1 ft ² |
| Grand total | | 4802.6 m ² | 51694.8 ft ² |

| Rev | Description | By | Date |
|-----|---------------------------|----|----------|
| 01 | Rev. Approved by Planning | ML | 20/02/23 |
| 02 | Rev. Approved by Planning | ML | 20/02/23 |
| 03 | Rev. Approved by Planning | ML | 20/02/23 |
| 04 | Rev. Approved by Planning | ML | 20/02/23 |

Document Status: **FOR PLANNING**

MARTIN WALSH ARCHITECTURAL

Firth Buildings, 99 - 103 Leeds Rd, Dewsbury, WF12 7BU | 01924 464342
e: info@martinwalsh.co.uk | w: www.martinwalsh.co.uk

Project: Proposed Development at Lindley Moor Road, Lindley, Huddersfield

Title: Unit P Proposed Ground and First Floor Plan

Client: 2SH Developments

Drawn by: @A0
Scale: 1:100
Floor Overlay: Landscape
Sheet: CS

File Number: LMSH - MWA - P - XX - DR - A - 0005
Revision: P3

