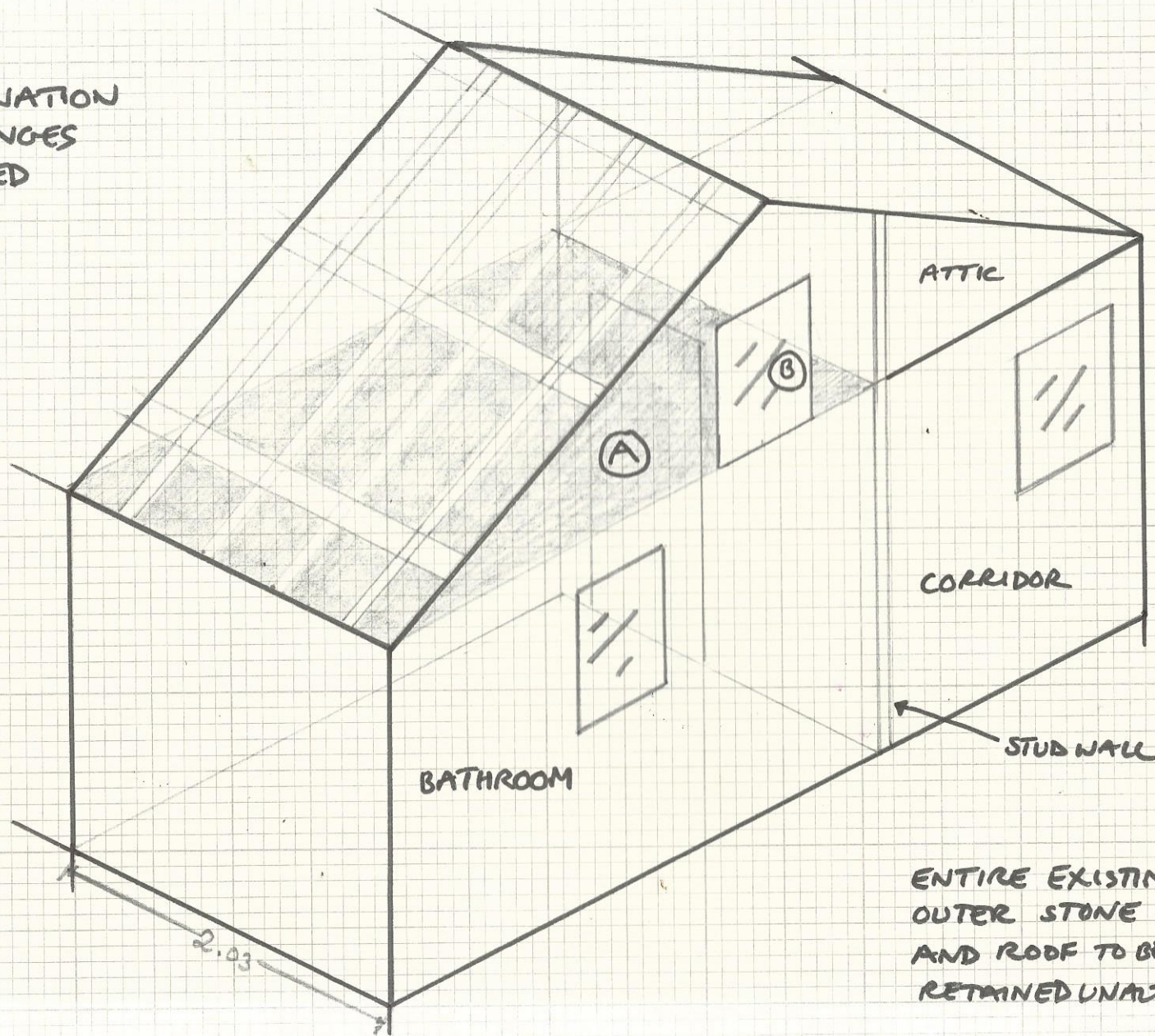


③ EXPLANATION  
OF CHANGES  
PROPOSED



ENTIRE EXISTING  
OUTER STONE WALL  
AND ROOF TO BE  
RETAINED UNALTERED.

Ⓐ PLASTERBOARD CEILING REMOVED (SHADED AREA)

Ⓑ DOUBLE GLAZED WINDOW TO REPLACE  
BRICKED UP ORIGINAL WINDOW.  
EXISTING SILL & LINTEL (STONE)  
TO BE RETAINED.