

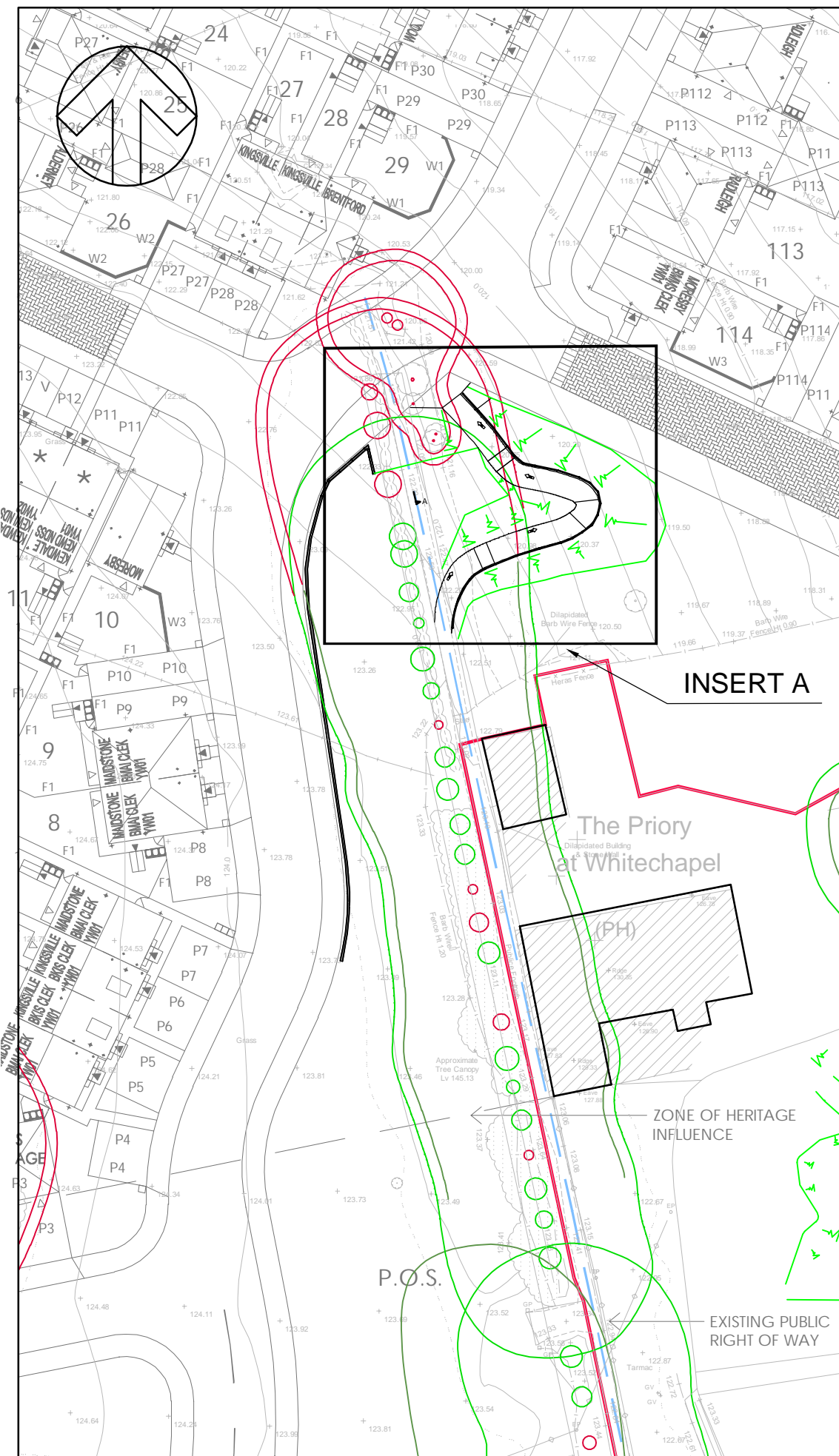
DO NOT SCALE

NOTES:

- 1. ALL DIMENSIONS IN m AND LEVELS IN m AOD.

LEGEND

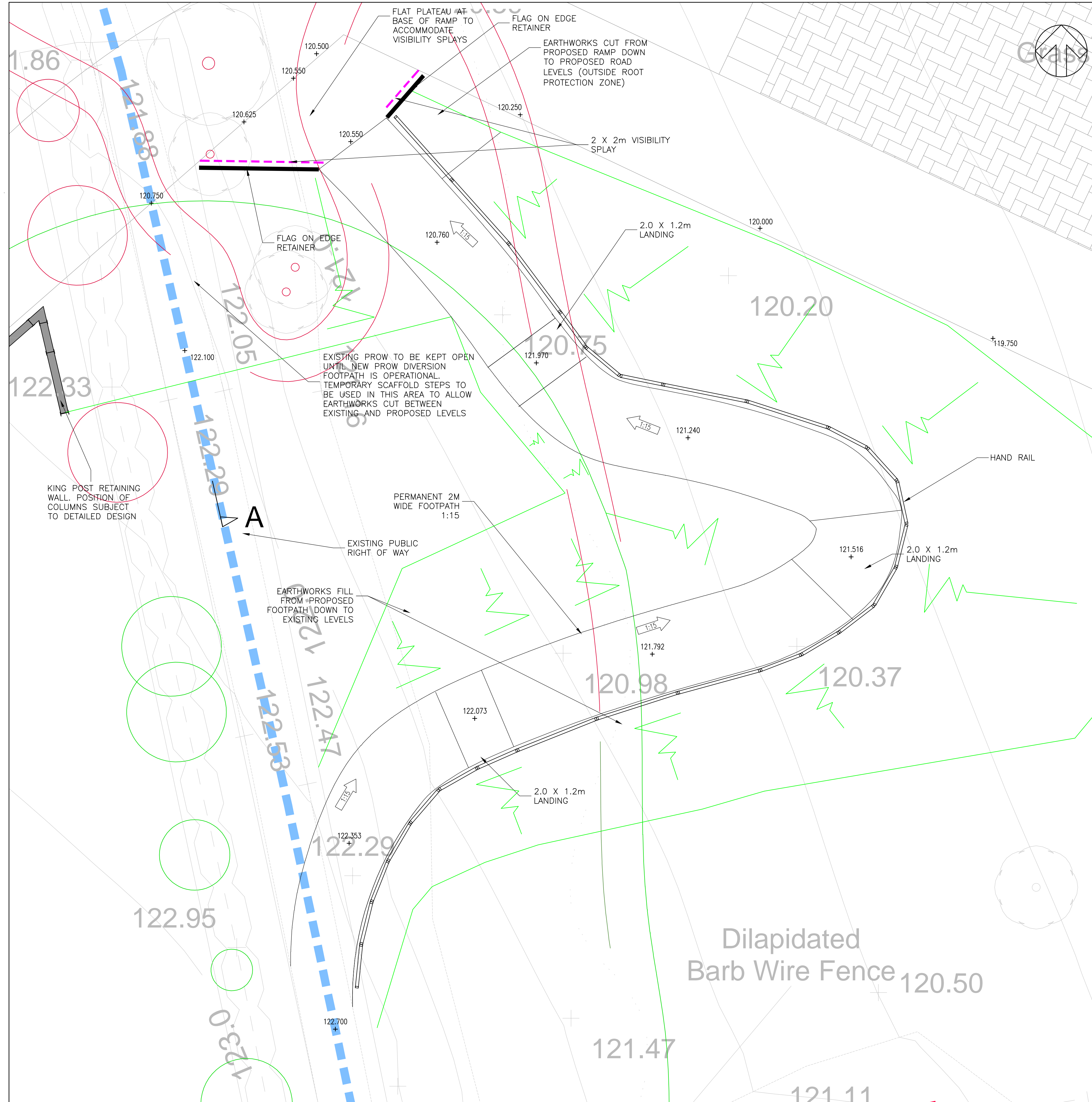
- TREE TO BE REMOVED
- TREE TO BE RETAINED
- EXISTING PROW ROUTE
- PROPOSED RETAINING WALL
- 120.750 PROPOSED LEVEL
- SITE BOUNDARY



LOCATION PLAN SCALE 1:500

NOTES

- 1. THE PROPOSALS ON THIS DRAWING ARE SUBJECT TO DISCUSSION WITH THE PROW OFFICER
- 2. DESIGN AND CONSTRUCTION MUST BE READ IN ACCORDANCE WITH THE ARB METHODOLOGY AND SUPERVISION WITH THE TREE CONSULTANT ECUS



INSERT A - STEP GENERAL ARRANGEMENT SCALE 1:50

REV	DATE	BY	DESCRIPTION	CHK	APP
P04	02/06/23	MW	UPDATED TO IN RESPONSE TO RSA	NS	DB
P03	04/01/22	MW	UPDATED TO SUIT PROW OFFICER COMMENTS	NS	DB
P02	02/12/22	MW	RAMP FOOTPATH RE-ROUTE	NS	DB
P01	28/11/22	MW	FIRST ISSUE	NS	DB

DRAWING STATUS:	S1- FOR COORDINATION
-----------------	----------------------

**wsp**  
 3 Wellington Place, Leeds, LS1 4AP, UK  
 T+ 44 (0) 113 395 6200, F+ 44 (0) 113 395 6201  
 wsp.com

CLIENT: BDW HOMES WEST YORKSHIRE

ARCHITECT:

SITE PROJECT: WHITECHAPEL ROAD, CLECKHEATON

TITLE: PROW RAMP OPTION PLAN

SCALE @ A1:	AS SHOWN	CHECKED:	NS	APPROVED:	DB
PROJECT NO:	70052051	DESIGNED:	MS	DRAWN:	MW
DATE:	June 23				

DRAWING NO:	H8040-0014_Details - Engineering_AFU_	REV:	P04
-------------	---------------------------------------	------	-----

© WSP UK Ltd

File name: I:\UK\_VSP\GROUP\CONCENTRAL DATA\PROJECTS\70052051\0007005404\_588 WORKS, WHITECHAPEL, CLECKHEATON\WIP\DEVELOPMENT\DRAWINGS\SS38 SECTION 38 PLAN\H8040\_0014\_DETAILS - ENGINEERING\_AFU\_ PROW RAMP OPTION PLAN\_P04.DWG, printed on 02 June 2023 13:58:24, by Smith, Nick